



FAIR FASHION<sup>®</sup>  
NATURAL LINE

*The Glamour of Italian Fashion | Wig Collection 2019*





## INDEX

- 4 About Fair Fashion
- 6 Why Choose Natural Line?
- 8 Fair Fashion Hair
- 10 Fair Fashion Colors
- 12 Natural Line Colors
- 14 Fair Fashion Caps
- 16 Alopecia and Hair Loss
- 18 Abby's Story
- 20 Wig Styles
- 21 Emily 3100
- 22 Giada 3101
- 23 Penelope 3102
- 24 Megan 3104/3123
- 25 Dominique 3103
- 26 Lory 3106
- 27 Alexis 3105
- 28 Brenda 3108
- 29 Giulia 3107
- 30 Joelle 3109
- 31 Mia 3110
- 32 Sarah 3111
- 33 Sophie 3112
- 34 Valery 3113
- 35 Aura 3114
- 36 Angel 3115
- 37 Irene 3116
- 38 Easy Volume Luxury Net 3117

FAIR FASHION<sup>®</sup>  
NATURAL LINE





# ABOUT FAIR FASHION

Fair Fashion is focused on the development and production of not just ordinary wigs and hairpieces but rather on trying to find valid solutions. Experience, innovation and Italian taste for fashion produce a Natural Line brand in constant evolution, which offers exceptional wigs with a highly accurate design. Quality is the most important aspect of wig making, and it is guaranteed by their competence and experience in the careful selection of natural hair. Fair Fashion has been offering, since 1975, true h and crafted custom-made wigs designed and tailored for women who need to wear a wig for long periods of time.

EXPERIENCE,  
INNOVATION AND  
ITALIAN TASTE  
FOR FASHION  
PRODUCE A  
FAIR FASHION  
NATURAL  
LINE BRAND  
IN CONSTANT  
EVOLUTION



CAREFUL  
SELECTION  
AND ACCURATE  
PRODUCTION  
PROCESS ENSURE  
THE CREATION  
OF WIGS WITH  
BEAUTIFUL  
HUMAN HAIR  
WHICH STAY  
SOFT, SHINY,  
SILKY AND FULL  
OF VOLUME  
OVER TIME

## WHY CHOOSE NATURAL LINE?

### REMY HAIR WITH INTACT CUTICLES

Fair Fashion guarantees only premium quality hair. Their wigs, designed for the most demanding customers, are made with either exclusive European Remy hair with intact cuticles which are kept throughout every stage of the production process, or with high quality Indian and Asian hair that has all the characteristics of healthy natural hair. Only a meticulous selection and careful craftsmanship can guarantee fabulous natural looking wigs that remain silky soft, sleek and full of volume over time.

### SUPERIOR CRAFTSMANSHIP

All wigs are handmade. The hair is knotted on transparent, breathable mesh to help replicate the natural growth of hair from the scalp. Only one or, at the most, two strands of hair are knotted on the cap in order to have a very natural looking wig.

### EXTREMELY LIGHT-WEIGHT CAPS

Caps are extremely light-weight and breathable, designed to provide a tight grip but at the same time ideal for the most sensitive skin types, in particular our Sensitive Cap...which is much more than just a normal wig!

### SUPERVISION AND QUALITY CONTROL

Competence and experience are reflected in every stage of production, guaranteeing the finest quality to the minute detail. Fair Fashion wigs stay beautiful and soft longer thanks to their close monitoring and supervision, to a highly professional production process and meticulous selection of the best raw materials available on the market (Remy hair with intact cuticles).





# FAIR FASHION HAIR

## EUROPEAN HAIR WITH INTACT CUTICLES

European hair, which is becoming always harder to find on the market, has a unique texture, it is soft and shiny and has a natural movement making it difficult to understand you're wearing an actual wig. Compared to Asian hair it is notably fine, soft and silky. In order to preserve all of its characteristics Fair Fashion has selected a specific cap which they call Natural Cap, this cap has been designed to preserve and keep cuticles intact all the way up the roots. The choice of this advanced cap is inevitable because with best quality hair on the market the craftsmanship has to be the upmost best. The result is an outstanding with that combines the quality of the materials with highly advanced craftsmanship. It has been designed for the most demanding Clients, and it stands out for its enduring quality and extreme naturalness. "The return knot" in the Natural Cap is trapped inside layers of the lace mesh, allowing only the final part of the hair to come out of the cap. The end result is a wig with hair that has intact cuticles and facing the same direction from the roots to the ends.

## INDIAN/ASIAN REMY HAIR WITH INTACT CUTICLES

Fair Fashion uses only Remy hair with intact cuticles, which has been meticulously selected for wigs with 10-12 inch long hair because it preserves all the characteristics of our own hair, such as volume and softness. The cuticles help protect the hair from the many stress factors that can damage long hair such as frequent styling with hot tools, blow dryers or rubbing against clothes. Because of the cuticles, the hair on the wigs lasts longer without drying up as fast as in other wigs. Furthermore, because the cuticles are all aligned in the same direction they prevent long hair long hair from getting tangled. When each strand of hair is hand-tied onto the cap a short piece of the hair comes back out from the knot in the opposite direction from the rest of the hair (except in the Natural Cap). This part of hair is called "the return knot" in technical language and its cuticles are all aligned in the opposite direction from the rest of the hair. To avoid tangling the cuticles are partially removed in the "return knots."

## INDIAN/ASIAN HAIR WITHOUT CUTICLES

With short hair wigs it's not necessary to use hair with intact cuticles. The reason for this is because short hair doesn't rub against your clothes therefore, the hair in these wigs doesn't undergo any excessive stress damaging the hair itself. In this case, Fair Fashion prefers to use hair with no cuticles so they can offer high quality products at affordable prices. The use of short hair with no cuticles does not affect the final quality of the wigs. But further dyeing or bleaching of the wigs may damage the hair. The expression "100% Remy Hair" in human hair wigs is commonly used all over the world, but true Remy hair with intact cuticles is not easily found on the market because of its high demand and the cost of the raw material. Many manufactures, in order to have a significant production, prefer using hair which has been collected randomly and therefore the hairs are not aligned in the same direction from the roots to the ends. The use of the second-hand hair (NON REMY) requires a different manufacturing process. The final quality of wigs made with this kind of second-hand hair will never be as good as wigs made 100% Remy Hair with intact cuticles.

THE END RESULT  
IS A WIG WITH  
HAIR THAT  
HAS INTACT  
CUTICLES  
ALL FACING  
THE SAME  
DIRECTION  
FROM THE  
ROOTS TO THE  
ENDS.

## PREMIUM QUALITY VIRGIN EUROPEAN REMY HAIR WITH INTACT CUTICLES

EMILY  
EASY VOLUME LUXURY NET

## EUROPEAN REMY HAIR WITH INTACT CUTICLES

GIADA  
PENELOPE

## INDIAN/ASIAN HAIR WITH INTACT CUTICLES

ALEXIS  
DOMINIQUE  
LORY  
MEGAN  
MIA  
SARAH

## INDIAN/ASIAN HAIR WITHOUT CUTICLES

ANGEL  
AURA  
BRENDA  
GIULIA  
IRENE  
JOELLE  
SOPHIE  
VALERY

Shown: Easy Volume Luxury Net in 2







## FAIR FASHION COLORS

Fair Fashion's attention to detail and style and their expertise can be perceived in the wide range of natural colors offered in their wig collection. Fair Fashion Natural Line wigs are available in more than 34 colors. Their aim is to offer a wide choice of colors to ensure that customers don't need to dye their wig to make it similar to their own color. Modern hairstyles and fashionable colors allow you to maintain or improve your look without anyone spotting the difference.

### WHY ARE FAIR FASHION WIG COLORS SO NATURAL?

Fair Fashion offers various multi-tone colors to produce a more natural look. A natural head of hair will never be all of the same color but rather it is made up of various strands of hair with similar color tones. It often has slightly different shades or natural highlights caused by sunlight. Their expert wigmakers follow precise patterns when creating a wig and insert different hair colors to create natural highlights and movement that give their wigs a very natural appearance.

Colors are always multi-tone:  
2/4, 4/6, 8/32, 6/8/10, 10/12, 213F

They offer many different highlighted colors as well, from browns to blondes: 637, 9/28/25, 10/27, 801

Over the years, traditional hair colors have been replaced by a multitude of shades. For this reason, Fair Fashion has added some ombre colors to their wigs: 2/4SH8, 4/6SH28, 6/8SH30, 10/12SH25

And rooted colors / regrowth effect:  
8R10/12, 8R27/30, 8R14/25, 10R14/26

Since Fair Fashion uses 100% natural hair, it's possible to customize the color of each wig. However, they recommend having your wig dyed only by a professional salon rather than changing the color on your own. They strongly advise against bleaching any wig because this can cause permanent damage to the hair. Coloring of the wig should always be from lighter tones to darker tones.



Fair Fashion Color Ring  
2108614

MODERN  
HAIRSTYLES AND  
FASHIONABLE  
COLORS  
ALLOW YOU TO  
MAINTAIN OR  
IMPROVE YOUR  
LOOK WITHOUT  
ANYONE  
SPOTTING THE  
DIFFERENCE.

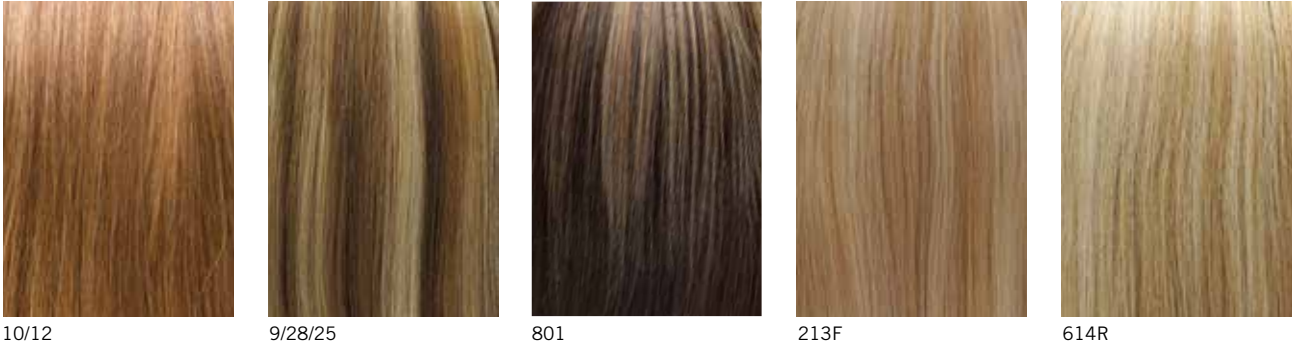


# NATURAL LINE COLORS

## DARK AND MEDIUM BROWN



## BLONDE AND HIGHLIGHTS



## COPPER BROWN AND REDS



## ROOTED COLORS



## OMBRE COLORS



## GREY COLORS - mixed with heat resistant fiber



## EUROPEAN HAIR COLORS



The color chart is only an indicator of the colors. To verify the colors we recommend purchasing our color ring.

# FAIR FASHION CAPS

## NATURAL CAP

Natural Cap is a completely breathable cap which gives a natural feeling to the wearer. The top part is made with a special lace mesh which hides the knots giving the impression that the hair grows directly from the scalp with a very natural effect.

- Breathable – 100% hand-tied
- 3-layer lace mesh known as French Top with invisible knotting
- Lace front
- Polyurethane patches for an optional use of double-sided tape



## SENSITIVE CAP

The innovative SENSITIVE CAP is the lightest cap ever produced, designed specifically for women who suffer from permanent hair loss. Years of research in close contact with women who suffer from alopecia has allowed Fair Fashion to gain a deep understanding of the needs and preferences of those women who have to wear a wig for long periods of time and therefore, has enabled them to produce this extraordinary light-weight cap. It is very important that people who suffer from alopecia wear a breathable cap that is also gentle and pleasing against the scalp.

- Lightest cap ever produced
- Breathable – 100% hand-tied
- Anti-slip silicone strips – polyurethane patches for an optional use of double-sided tape
- Diamond net
- Ear to ear lace front
- Available in 2 sizes: S & M



## CONFIDENCE CAP

Confidence Cap has been created for women who are experiencing temporary hair loss due to chemotherapy and radiation treatments and therefore, whose scalp can be particularly sensitive, and for those women suffering from Alopecia Universalis or Androgenetic Alopecia.

- Breathable – 100% hand-tied
- Silicone strips for a stronger hold
- Monofilament top
- Diamond net
- Lace front



## COMFORT CAP

Comfort Cap is extremely light weight and entirely hand-tied.

- Extra-light and breathable cap
- 100% hand-tied
- Monofilament top



## BASIC CAP

Basic Cap is a handcrafted cap with a monofilament top section which gives the appearance that the hair is actually growing from the scalp and which allows an excellent ventilation. It is also characterized by concentric wefts on the back section.

- Breathable
- Monofilament top





# ALOPECIA AND HAIR LOSS



NATURAL  
LINE WIGS  
GIVE YOU THE  
EMOTIONS  
AND  
SENSATION  
OF HAVING  
YOUR OWN  
NATURAL  
HAIR BACK  
AGAIN

## HAIR THINNING AND HAIR LOSS DUE TO ALOPECIA AREATA

Today you can rely on a new line of wigs designed to help and improve your natural feminine beauty. Natural Line wigs give you the emotions and sensation of having your own natural hair back again, maintaining and even improving your image without people even noticing you are wearing a wig. No other wigs adapt perfectly to a woman's face features as Fair Fashion wigs, enhancing her image and making her feel perfectly at ease. Natural Line wigs will become an essential part of your wardrobe. Natural Line wigs help you cope with the negative emotions attached to thinning or complete hair loss due to Alopecia and can help you live a full and complete life.

Fair Fashion is proud to have created a line of wigs, Natural Line, where strict technical requirements meet aesthetic quality. The caps are lightweight and breathable, designed for a firm hold while respecting the most sensitive skin types. All hair used in Natural Line wigs is 100% natural Remy Hair of the highest quality. These technical features together with an exquisite design result in the creation of beautiful wigs that are natural to the eye and extremely comfortable to wear. Fair Fashion wig styles and colors are in line with the latest fashions to satisfy the needs of those women who have to face a very delicate and difficult moment in their life, such as hair loss.

## HAIR LOSS DUE TO CHEMOTHERAPY AND RADIOTHERAPY

Hair loss is a well-known side effect of chemotherapy (and radiotherapy). The loss of hair is caused by damage to the hair follicles – the cells responsible for hair growth. From a medical point of view hair loss due to chemotherapy is an unwanted side effect though understandably a secondary problem. Nevertheless, hair loss can affect a person emotionally, and should not be overlooked when weighing up the overall state of health of a person.

For many women, hair loss adds to the trauma, having a negative effect on their self-confidence self-esteem during an already emotionally fragile and difficult time in their life. Fair Fashion believes that simply having the possibility to look in the mirror and feel better about yourself can help empower a suffering person to better face up to their illness and therapy. Wearing a wig can offer a valuable psychological support. Conserving your original look can help a person carry out their day to day activities with greater ease.





## ABBY'S STORY

Hi, I'm Abby Andrew Shaffer, spokesperson for Aderans Hair Goods. Just 5 years ago, I started my YouTube channel "Abby Andrew" to discuss topics like alopecia, wigs, and fashion. I first started my channel as a way to connect with other people dealing with hair loss issues like myself. Since starting my channel, I have discovered the wonderful and supportive alopecia and wig communities that exist on platforms like YouTube and Instagram. It's been really exciting to interact with my viewers as I've watched my channel steadily grow.

Making videos is a fantastic way to connect with an audience in a more personal way. When I make my wig reviews, I'm able to show more features of the wig than I could through a photo, such as the movement and quality of the hair, details of the color, and cap construction. Posting on social media also allows me to connect with the audience personally in the comments section.

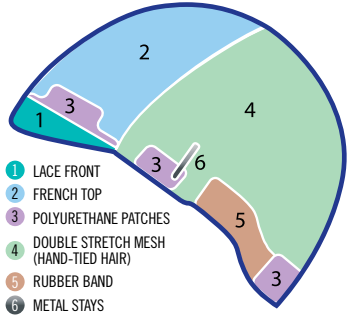
I HAVE  
DISCOVERED THE  
WONDERFUL  
AND SUPPORTIVE  
ALOPECIA  
AND WIG  
COMMUNITIES  
THAT EXIST ON  
PLATFORMS LIKE  
YOUTUBE AND  
INSTAGRAM.





WIG  
STYLES

NATURAL  
Cap



Emily 3100

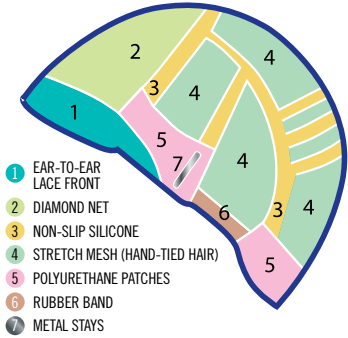


Giada 3101



Penelope 3102

SENSITIVE  
Cap

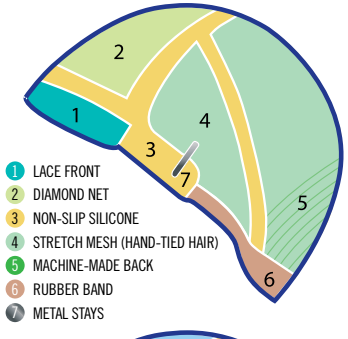


Megan 3104 SMALL CAP  
Megan 3123 MED. CAP



Dominique 3103 SMALL CAP  
Dominique 3122 MED. CAP

CONFIDENCE  
Cap



Lory 3106

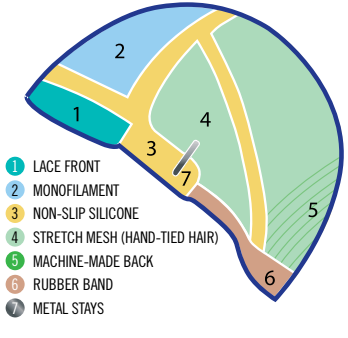


Alexis 3105



Mia 3110

CONFIDENCE  
Cap



Giulia 3107

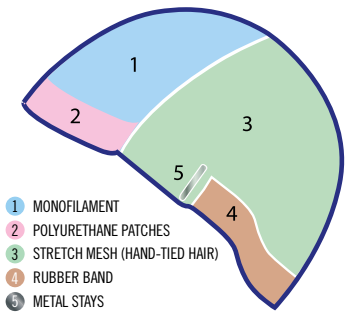


Joelle 3109



Brenda 3108

COMFORT  
Cap



Sarah 3111



Sophie 3112

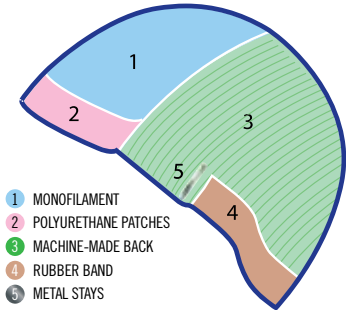


Valery 3113



3114

BASIC  
Cap



Angel 3115



Irene 3116

EMILY  
3100

EUROPEAN REMY HAIR  
WITH INTACT CUTICLES

*A soft, feminine  
style designed to give  
movement and volume.*

NATURAL CAP

- Breathable – 100% hand-tied
- 3 layer lace mesh known as French Top with invisible knotting
- Lace front
- Polyurethane patches for an optional use of double-sided tape

Colors Shown:  
8 (main and insets), 8/14 (bottom right)

Front: 7.9" (20 cm)  
Nape: 7.9" (20 cm)  
Sides: 7.9" (20 cm)  
Crown: 7.9" (20 cm)  
Total Length: 15.7" (40 cm)  
Weight: 4.8 oz (135 g)

Available Colors:  
4/6, 8, 10/12, 8/14, 12/14/16  
(European Hair Color Ring)



NATURAL  
Cap





## GIADA 3101

EUROPEAN REMY HAIR  
WITH INTACT CUTICLES

*Perfectly contours the face  
and falls onto the shoulders  
and down the back with  
natural movement.*

### NATURAL CAP

- Breathable – 100% hand-tied
- 3 layer lace mesh known as French Top with invisible knotting
- Lace front
- Polyurethane patches for an optional use of double-sided tape

Front: 11.8" (30 cm)  
Nape: 11.8" (30 cm)  
Sides: 11.8" (30 cm)  
Crown: 11.8" (30 cm)  
Total Length: 19.7" (50 cm)  
Weight: 6.3 oz (180 g)

Color Shown: 12/14/16

Available colors:  
4/6, 8, 10/12, 8/14, 12/14/16  
(European Hair Color Ring)



## PENELOPE 3102

EUROPEAN REMY HAIR  
WITH INTACT CUTICLES

*Long, flowing hair that falls  
freely down mid-back giving a  
touch of femininity and elegance.*

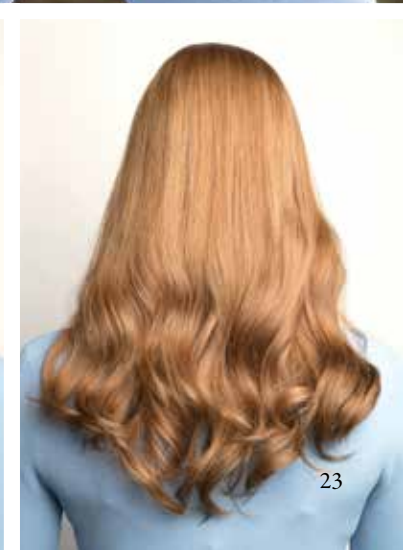
### NATURAL CAP

- Breathable – 100% hand-tied
- 3 layer lace mesh known as French Top with invisible knotting
- Lace front
- Polyurethane patches for an optional use of double-sided tape

Front: 15.7" (40 cm)  
Nape: 15.7" (40 cm)  
Sides: 15.7" (40 cm)  
Crown: 15.7" (40 cm)  
Total Length: 23.6" (60 cm)  
Weight: 7.2 oz (205 g)

Color Shown: 10/12

Available Colors:  
4/6, 8, 10/12, 8/14, 12/14/16  
(European Hair Color Ring)





# MEGAN

## 3104 SMALL CAP

## 3123 MED. CAP

REMY HAIR WITH INTACT CUTICLES

*A medium to long cut that is refined and feminine. Available in small and medium cap.*



# DOMINIQUE

## 3103

REMY HAIR WITH INTACT CUTICLES

*Stunning hair that beautifully cascades halfway down the back.*



### SENSITIVE CAP

- Lightest cap ever produced
- Breathable – 100% hand-tied
- Anti-slip silicone strips – polyurethane patches for an optional use of double-sided tape
- Diamond Net
- Ear to ear lace front
- Available in 2 sizes: S & M

Front: 9.8" (25 cm)  
Nape: 9.8" (25 cm)  
Sides: 9.8" (25 cm)  
Crown: 9.8" (25 cm)  
Total Length: 17.7" (45 cm)  
Weight: 5.5 oz (155 g)

Color Shown: 8R10/12

Available Colors:  
2/4, 4/6, 8/32, 8R10/12, 8R27/30, 8R14/25,  
9/28/25, 6/8SH30



### SENSITIVE CAP

- Lightest cap ever produced
- Breathable – 100% hand-tied
- Anti-slip silicone strips – polyurethane patches for an optional use of double-sided tape
- Diamond Net
- Ear to ear lace front
- Available in 2 sizes: S & M

Front: 14.5" (37 cm)  
Nape: 14.9" (38 cm)  
Sides: 14.5" (37 cm)  
Crown: 16.5" (42 cm)  
Total Length: 22.8" (58 cm)  
Weight: 6.9 oz (195 g)

Color Shown: 8R14/25

Available Colors:  
2/4, 4/6, 8/32, 8R10/12, 8R27/30,  
8R14/25, 9/28/25, 6/8SH30







# ALEXIS

## 3105

REMY HAIR WITH  
INTACT CUTICLES

*A blended cut with a tapered outline. The hair falls naturally around the face for a feminine look.*

### CONFIDENCE CAP

- Breathable
- Strong hold with anti-slip silicone strips
- Diamond net
- Non-toxic and hypoallergenic
- Lace front

Front: 10.6" (27 cm)  
Nape: 10.6" (27 cm)  
Sides: 10.6" (27 cm)  
Crown: 10.6" (27 cm)  
Total Length: 19.7" (50 cm)  
Weight: 5.3 oz (150 g)

Color Shown: 9/28/25

Available Colors:  
2/4, 4/6, 8/32, 8R10/12, 8R27/30, 8R14/25,  
9/28/25, 2/4SH8, 6/8SH30, 637



# LORY

## 3106

REMY HAIR WITH  
INTACT CUTICLES

*Long straight hair gives an exceptional air of femininity.*

### CONFIDENCE CAP

- Breathable
- Strong hold with anti-slip silicone strips
- Diamond net
- Non-toxic and hypoallergenic
- Lace front

Front: 9.8" (25 cm)  
Nape: 9.8" (25 cm)  
Sides: 9.8" (25 cm)  
Crown: 9.8" (25 cm)  
Total Length: 17.7" (45 cm)  
Weight: 5.5 oz (155 g)

Color Shown: 6/8SH30

Available Colors:  
2, 4/6, 8, 6/8/10, 12/10, 9/28/25, 614R,  
10R14/26, 2/4SH8, 6/8SH30, 10/12SH25, 731







# BRENDA 3108

REMY HAIR WITHOUT CUTICLES

*A short, youthful cut  
that can be styled in any  
number of ways.*

## CONFIDENCE CAP

- Breathable
- Strong hold with anti-slip silicone strips
- Diamond net
- Non-toxic and hypoallergenic
- Lace front

Front: 2.8" (7 cm)  
Nape: 1.9" (5 cm)  
Sides: 2.8" (7 cm)  
Crown: 3.5" (9 cm)  
Weight: 1.8 oz (52 g)

Color Shown: 6/8/10

Available Colors:  
4/6, 8, 6/8/10, 12/10, 9/28/25, 213F, 614R,  
8R14/25, 44, 56F51



# GIULIA 3107

REMY HAIR WITHOUT CUTICLES

*A gently blended carrè with  
light fringe for a modern,  
youthful look.*

## CONFIDENCE CAP

- Breathable
- Strong hold with anti-slip silicone strips
- Diamond net
- Non-toxic and hypoallergenic
- Lace front

Front: 5.1" (13 cm)  
Nape: 3.5" (9 cm)  
Sides: 7" (18 cm)  
Crown: 7.9" (20 cm)  
Weight: 3.4 oz (96 g)

Color Shown: 801

Available Colors:  
2/4, 4/6, 8/32, 801, 8R10/12,  
8R14/25, 9/28/25







## JOELLE 3109

REMY HAIR WITHOUT CUTICLES

*A medium-length wig for a classic and elegant appearance.*

### CONFIDENCE CAP

- Breathable
- Strong hold with anti-slip silicone strips
- Diamond net
- Non-toxic and hypoallergenic
- Lace front

Front: 7.5" (19 cm)  
Nape: 3.5" (9 cm)  
Sides: 2.8" (18 cm)  
Crown: 8.3" (21 cm)  
Weight: 3.8 oz (109 g)

Colors Shown: 10/12/SH25 (main), 4/6SH28 (insets)

Available Colors:  
4/6, 8/32, 8R10/12, 10R14/26, 9/28/25, 4/6SH28,  
10/12SH25, 4R30/33



## MIA 3110

REMY HAIR WITH INTACT CUTICLES

*A well-defined medium to long cut, that delicately touches the shoulders.*

### CONFIDENCE CAP

- Breathable
- Strong hold with anti-slip silicone strips
- Diamond net
- Non-toxic and hypoallergenic
- Lace front

Front: 11.8" (30 cm)  
Nape: 9.8" (25 cm)  
Sides: 9.4" (24 cm)  
Crown: 11.8" (30 cm)  
Total Length: 17.7" (45 cm)  
Weight: 4.8 oz (135 g)

Color Shown: 731

Available Colors:  
2/4, 4/6, 8/32, 637, 12/10, 9/28/25, 213F, 614R,  
8R14/25, 4/6SH28, 731







## SARAH 3111

REMY HAIR WITH INTACT CUTICLES

*An extremely feminine look that cascades over the shoulders.*

### COMFORT CAP

- Extra-light and breathable cap
- 100% hand-tied
- Monofilament top

Front: 12.6" (32 cm)  
Nape: 13.8" (35 cm)  
Sides: 13.8" (35 cm)  
Crown: 13.8" (35 cm)  
Total Length: 21.7" (55 cm)  
Weight: 5.8 oz (165 g)

Color Shown: 830

Available Colors:  
2/4, 4/6, 8, 830, 637, 8R10/12,  
9/28/25, 213F, 614R, 8R14/25



## SOPHIE 3112

REMY HAIR WITHOUT CUTICLES

*Classic lines and a slight fringe offers a touch of class.*

### COMFORT CAP

- Extra-light and breathable cap
- 100% hand-tied
- Monofilament top

Front: 4.7" (12 cm)  
Nape: 4.7" (12 cm)  
Sides: 4.3" (11 cm)  
Crown: 5.9" (15 cm)  
Weight: 2 oz (58 g)

Color Shown: 213F  
8/32 (insets)

Available Colors:  
4, 8/32, 12/10, 637, 9/28/25, 213F, 614R, 44, 56F51







## AURA 3114

REMY HAIR WITHOUT CUTICLES

*A short, layered cut, classic and elegant.*

### COMFORT CAP

- Extra-light and breathable cap
- 100% hand-tied
- Monofilament top

Front: 6.3" (16 cm)  
Nape: 7.5" (19 cm)  
Sides: 8.3" (21 cm)  
Crown: 9.4" (24 cm)  
Weight: 3.5 oz (98 g)

Colors Shown:  
12/10 (main), 10/27 (insets)

Available Colors:  
4, 8/32, 12/10, 10/27, 637, 9/28/25, 213E,  
614R, 8R14/25, 4/6SH28, 4R30/33



## VALERY 3113

REMY HAIR WITHOUT CUTICLES

*A feminine classic that elegantly frames the face.*

### COMFORT CAP

- Extra-light and breathable cap
- 100% hand-tied
- Monofilament top

Front: 10.6" (27 cm)  
Nape: 4.3" (11 cm)  
Sides: 7" (18 cm)  
Crown: 10.2" (26 cm)  
Weight: 3.5 oz (100 g)

Color Shown: 10/12SH25

Available Colors:  
4, 8/32, 12/10, 637, 9/28/25, 213E, 614R, 10/12SH25







## ANGEL 3115

REMY HAIR WITHOUT CUTICLES

*Layered, young cut for a modern look. Light and extremely natural looking.*

### BASIC CAP

- Breathable
- Monofilament top



### BASIC CAP

- Extremely resistant
- Breathable
- Monofilament top

Front: 5.9" (15 cm)  
Nape: 3.5" (9 cm)  
Sides: 5.1" (13 cm)  
Crown: 6.3" (16 cm)  
Weight: 3.2 oz (92 g)

Color Shown: 8R/14/25

Available Colors:  
4/6, 8/32, 801, 8R10/12, 8R27/30,  
8R14/25, 9/28/25, 738A



## IRENE 3116

REMY HAIR WITHOUT CUTICLES

*This medium-long length wig is both feminine and versatile.*

### BASIC CAP

- Breathable
- Monofilament top

Front: 9.8" (25 cm)  
Nape: 9.4" (24 cm)  
Sides: 10.6" (27 cm)  
Crown: 12.9" (33 cm)  
Weight: 5.3 oz (150 g)

Color Shown: 9/28/25

Available Colors:  
2/4, 4/6, 8, 6/8/10, 637, 8R10/12,  
9/28/25, 213F, 8R14/25





## EASY VOLUME LUXURY NET 3117

LUXURY NET is a hairpiece that uses the MicroLine method, an exceptional and revolutionary new system that integrates a micro-fine, virtually invisible net into the Client's existing hair with a special thread of keratin, the so called MicroLine. LUXURY NET is made exclusively with premium quality European hair. European hair has a unique texture which makes it soft and shiny. It has a natural movement to it that easily blends with your own hair and makes it almost impossible to notice the difference.

- The top part is made of 3 layers of lace mesh otherwise known as “French Top”, which hides the knots giving the impression that the hair grows directly from the scalp with a very natural effect.
- This MicroLine method enables to pass some of the Client's hair through the net all around the perimeter integrating it with the hairpiece and making it possible to comb and style just as if it were your own. Unlike other hairpieces and wigs, this method will not set limitations to one's normal lifestyle. The Microline System is perfectly adapted for each client's specific situation.
- Easy Volume Luxury Net uses exclusively Virgin European hair which is soft and shiny and has natural bounce and elasticity.

MADE  
EXCLUSIVELY  
WITH PREMIUM  
QUALITY  
EUROPEAN HAIR  
WHICH HAS A  
UNIQUE, SOFT  
AND SHINY  
TEXTURE



EASY VOLUME LUXURY NET M  
3117



Top size M: 6.2" x 1.5" (16 cm x 14 cm)  
Hair length: 8.6" (22 cm)

Available colors:  
4/6, 8, 10/12, 8/14, 12/14/16  
(European Hair Color Ring)





Distributed by

**ADERANS**  
Aderans Hair Goods

9135 Independence Avenue  
Chatsworth, CA 91311 USA  
Toll Free: 800.353.7363  
Fax: 818.885.0134

Front and Back Cover Style Shown:  
Dominique - 8R14/25

[www.reneofparis.com](http://www.reneofparis.com)

FOLLOW US ON:



FAIR FASHION CATALOG 2019



2108949