



NORIKO™

2020/2021 COLLECTION









# NORIKO™

2020/2021 COLLECTION

## A NEW SEASON BEGINS...

You've been waiting, and the new season is finally here. Stay tuned for **Nima, Alva, Emery and Malibu**. Noriko's sleek, chic and stylish new offerings for 2020, featuring our quality-crafted *Feather-Light Machine Made* and *Lace Front* and *Lace Part caps*.

With a new season also comes new luxuriant colors: **Peach Gold, Red Brown, Kandy Brown-LR, Moonstone** and **Simply White**. This fresh, trend-driven lineup is sure to enhance any style.

## YOUR NEW FAVORITE AWAITS!

Style shown: Malibu in Melted Marshmallow





NEW

ALVA 1715  
P. 10 - 11



NEW

EMERY 1714  
P. 12 - 13



NEW

MALIBU  
1716  
P. 14 - 15



NEW

NIMA 1713  
P. 16 - 17

# TABLE OF CONTENTS



- AVAILABLE COLORS ..... 6 - 9
- NEW STYLES ..... 10-17
- LACE FRONT WIGS ..... 18 - 26
- MONOFILAMENT WIGS..... 27 - 30
- PARTIAL MONOFILAMENT WIGS..... 31 - 32

- LARGE MACHINE-MADE CAP..... 33 - 35
- MACHINE-MADE WIGS ..... 36 - 66
- HAIR ENHANCEMENT..... 67
- ACCESSORIES..... 68-70
- WET PRODUCTS ..... 71





ALEXI 1711



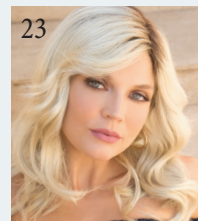
BRADY 1704



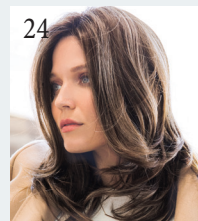
EDEN 1710



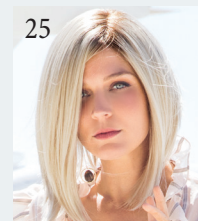
FAITH 1705



JADEN 1707



JULES 1706



TAYLOR 1708



ZION 1712



JOLIE 1662



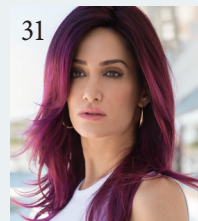
KENZIE 1684



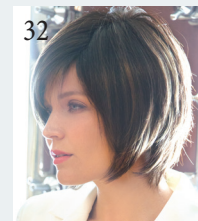
RYAN 1653



SHILO 1654



ANGELICA PM 1696



REESE PM 1697



ANGELICA LRG 1702



REESE LRG 1703



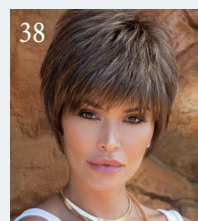
SKY LARGE 1699



ANGELICA 1625



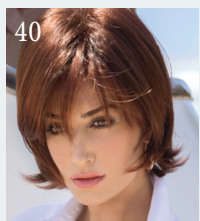
AVERY 1677



BILLIE 1701



CARRIE 1674



CLAIRE 1647



CORY 1633



DOLCE 1686



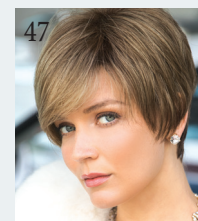
DREW 1631



ELLIOT 1709



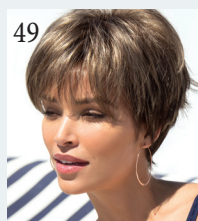
EMERSON 1698



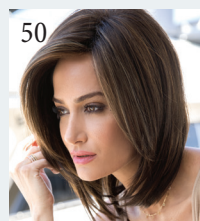
EVA 1672



HAILEY 1680



IVY 1679



JACKSON 1669



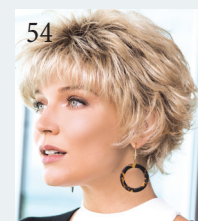
KATE 1668



LEXY 1642



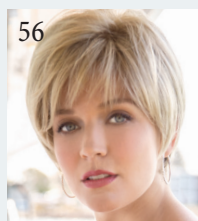
MARIAH 1613



MASON 1632



MAY 1673



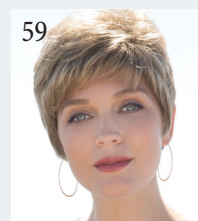
MEGAN 1607



MILLIE 1655



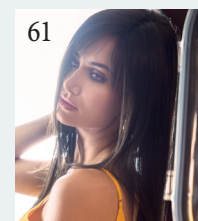
NORI 1682



PAM 1606



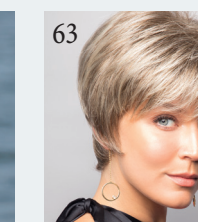
REESE 1660



ROBIN 1639



RONI 1641



SALLY 1616



SANDIE 1648



SEVILLE 1685



SKY 1649



MILAN 1658

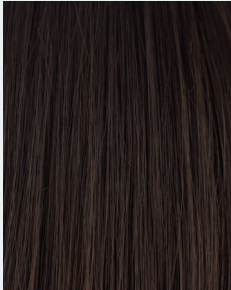


# AVAILABLE COLORS

## BRUNETTES



Espresso



Cappuccino



Chocolate Lava



Dark Chocolate



Blueberry Burst



Chocolate Swirl



Java Frost



Ginger Brown



Kahlua Blast



Marble Brown



Toasted Brown



Medium Brown



Golden Brown



Light Chocolate



Pecan Brown



Deep Smoky Brown



Marble Brown-R

## HYBRANT BRUNETTES



Coffee Latte-R



Chocolate Frost-R



Almond Rocka-R



Iced Mocha-R



Maple Sugar-R



Honey Brown-R



A NEW SEASON AWAITS.  
GO AHEAD AND SHOW YOUR

# TRUE COLORS

## BLONDS



Harvest Gold



Sunny Blond



Frosti Blond



Butter Pecan



Chai Cream



Strawberry Swirl



Vanilla Lush



Butterscotch



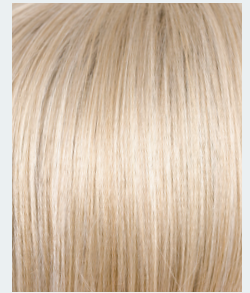
Caramel Cream



Spring Honey



Gold Blond



Creamy Blond

## HYBRANT BLONDS



NEW!

Peach Gold



Platinum Pearl



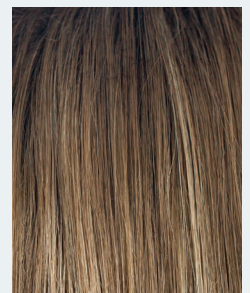
Butter Pecan-R



Mocha-H



Mochaccino-R



Honey Wheat-R



Nutmeg-R/F



Sugar Cane -R



Creamy Toast-R



Creamy Toffee-R



Spring Honey-R



Sandalwood-H

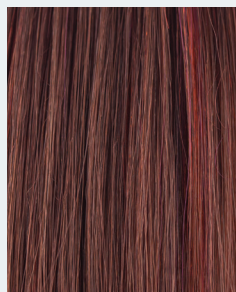


Champagne-R



## AVAILABLE COLORS (CONTINUED)

### HYBRANT UNDERLIGHTS



Cherrywood

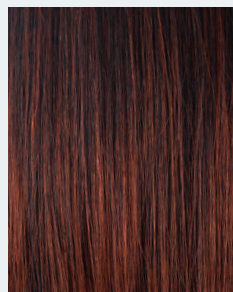
### REDS



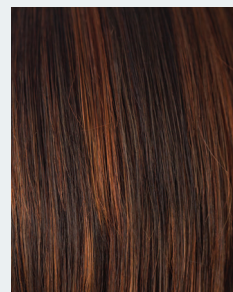
Mulberry Brown



Burgundy



Burgundy Rosa



Red Pepper



Garnet Glaze



**NEW!**

Red Brown



Ginger Highlight



Bronzed Brown



Chestnut

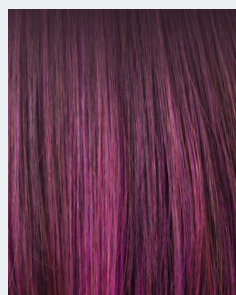


Coconut Spice

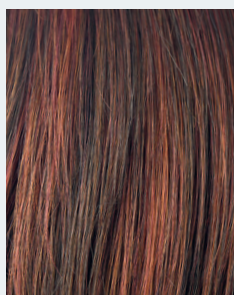


Dark Rust

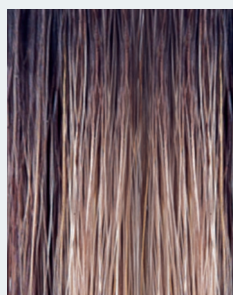
### HYBRANT REDS



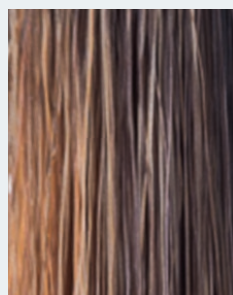
Plumberry Jam-R



Cayenne Spice-R



Raisin Glaze-H



Terracotta-H



Almond Spice-R



Auburn Sugar-R



Razberry Ice-R



Irish Spice-R



Burnt Sienna-R



Copper Glaze-R



**SPECIAL ORDERS:** If you don't see a favorite style in this catalog or if you want a style designed in a different color, just contact your AHG sales consultant and ask about placing a "special order." We will do our very best to accommodate your requests! **1.800.353.7363**

## MELTED



Melted Plum



Melted Marshmallow

## HYBRANT PASTELS



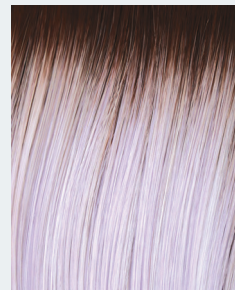
Illumina-R



Bubblegum-R



Seaglass-R



Lavendar Blush-R

## GRAYS



Black Onyx



Midnite Pearl



Sandy Silver™



Silver Stone™



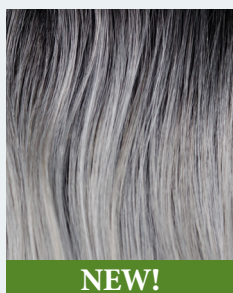
**NEW!**

Simply White

## HYBRANT GRAYS



Smoky Gray-R



**NEW!**

Moonstone

## LR COLORS (LONG ROOTED)

LR COLORS offer a dramatic ombré style root with a gradual lightening toward the ends.

## LR BRUNETTES



Marble Brown-LR



**NEW!**

Kandy Brown-LR

## LR BLONDS



Banana Split-LR



Macadamia-LR



Mochaccino-LR

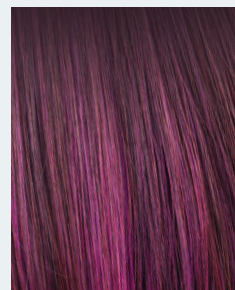


Creamy Toffee-LR

## LR REDS



Crimson-LR



Plumberry Jam-LR



## ALVA 1715

TRENDSETTING, COLLAR-LENGTH BOB WITH A TAPERED FRINGE. THE LAYERS AND LENGTH COMBINE TO CREATE NATURAL MOVEMENT AND A VERSATILE LOOK.





Colors Shown:  
Red Brown **NEW!** (left)  
Peach Gold **NEW!** (right)

Cap: Feather Light Machine-Made  
Fringe: 3.9" (10 cm)  
Crown: 9.4" (24 cm)  
Nape: 3.9" (10 cm)  
Weight: 3.7 - 3.9 oz (105-110 g)

**AVAILABLE COLORS:**

**BRUNETTES:**

Espresso  
Cappucino  
Dark Chocolate  
Medium Brown  
Deep Smoky Brown  
Ginger Brown

**HYBRANT BRUNETTES:**

Coffee Latte  
Chocolate Frost-R  
Marble Brown-R  
Iced Mocha-R  
Honey Brown-R

**BLONDS:**

Creamy Blond  
Peach Gold **NEW!**

**HYBRANT BLONDS:**

Mochaccino-R  
Champagne-R  
Spring Honey-R  
Sugar Cane-R  
Creamy Toffee-R

**REDS:**

Red Brown **NEW!**  
Chestnut

**LR BRUNETTES:**

Kandy Brown-LR **NEW!**

**MELTED:**

Melted Marshmallow

**GRAYS:**

Silver Stone  
Simply White **NEW!**

**HYBRANT GRAYS:**

Moonstone **NEW!**





NEW

## EMERY 1714

THIS CHIN-LENGTH, LAYERED BOB CREATES A MODERN YET CLASSICAL LOOK. THE SOFT BODY AND NATURAL LIFT FLATTERS ANY FACE SHAPE.







Colors Shown:  
Kandy Brown-LR **NEW!** (left)  
Moonstone **NEW!** (right)

Cap: Lace front + part  
Fringe: 7.1"(18 cm)  
Crown: 6.3"(16 cm)  
Nape: 2.4"(6 cm)  
Weight: 2.9 oz (81 g)

**AVAILABLE COLORS:**

**BRUNETTES:**

Espresso  
Cappucino  
Dark Chocolate  
Medium Brown  
Deep Smoky Brown  
Ginger Brown

**HYBRANT BRUNETTES:**

Coffee Latte  
Chocolate Frost-R  
Iced Mocha-R  
Honey Brown-R

**BLONDS:**

Creamy Blond  
Peach Gold **NEW!**

**HYBRANT BLONDS:**

Spring Honey-R  
Sugar Cane-R  
Creamy Toffee-R

**REDS:**

Red Brown **NEW!**  
Chestnut

**HYBRANT REDS:**

Razberry Ice-R

**LR BRUNETTES:**

Marble Brown-LR  
Kandy Brown-LR **NEW!**

**LR BLONDS:**

Mochaccino-LR

**MELTED:**

Melted Marshmallow

**GRAYS:**

Silver Stone  
Simply White **NEW!**

**HYBRANT GRAYS:**

Moonstone **NEW!**



NEW  
HAIR ENHANCEMENT

## MALIBU 1716

STUNNING, LONG-LAYERED  
HAIR ENHANCEMENT  
WITH SIDE SWEEP FRINGE.  
NATURALLY TAPERED ENDS  
ARE SURE TO BLEND IN WELL.





Colors Shown:  
Dark Chocolate (left)  
Melted Marshmallow (right)

Cap: Monofilament Cap  
Fringe: 5.9" (15 cm)  
Crown: 9.4" (24 cm)  
Weight: 3.2 - 3.4 oz (90-95 g)

**AVAILABLE COLORS:**  
**BRUNETTES:**

Espresso  
Cappucino  
Dark Chocolate  
Ginger Brown

**HYBRANT BRUNETTES:**  
Marble Brown-R

**BLONDS:**  
Creamy Blond  
Spring Honey

**HYBRANT BLONDS:**  
Coffee Latte  
Champagne-R  
Creamy Toffee-R  
Mochaccino-R  
Nutmeg-F  
Sugar Cane-R

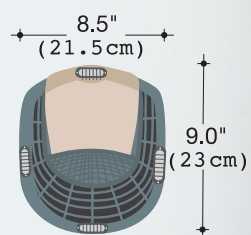
**REDS:**  
Chestnut

**LR BRUNETTES:**  
Kandy Brown-LR **NEW!**

**MELTED:**  
Melted Marshmallow

**GRAYS:**  
Silver Stone  
Simply White **NEW!**

**HYBRANT GRAYS:**  
Moonstone **NEW!**



BEFORE





NEW

## NIMA 1713

TAPERED, SHORT BOB WITH  
NATURAL BODY CREATES  
TIMELESS CHARM. SOFT  
LAYERS FRAME THE FACELINE  
BEAUTIFULLY.







Colors Shown:  
Coffee Latte (left)  
Simply White **NEW!** (right)

Cap: Feather Light  
Machine-Made  
Fringe: 3.9-5.5" (10-14cm)  
Crown: 7.1" (18cm)  
Nape: 2" (5cm)  
Weight: 2.8-2.9oz (78-83g)

**AVAILABLE COLORS:**

**BRUNETTES:**

Cappucino  
Dark Chocolate  
Medium Brown  
Deep Smoky Brown  
Ginger Brown

**HYBRANT BRUNETTES:**

Coffee Latte  
Marble Brown-R  
Iced Mocha-R  
Honey Brown-R

**BLENDS:**

Creamy Blond  
Frosti Blond  
Sugar Cane  
Peach Gold **NEW!**

**HYBRANT BLENDS:**

Champagne-R  
Spring Honey-R  
Creamy Toffee-R  
Nutmeg-F

**REDS:**

Red Brown **NEW!**  
Chestnut

**HYBRANT REDS:**

Raspberry Ice-R

**LR BRUNETTES:**

Kandy Brown-LR **NEW!**

**GRAYS:**

Silver Stone  
Simply White **NEW!**

**HYBRANT GRAYS:**

Moonstone **NEW!**





## ALEXI 1711

THIS TEXTURED BOB WITH BANGS FRAMES THE FACE PERFECTLY CREATING A MODERN FIT.







Colors Shown:  
Honey Brown-R (left)  
Mulberry Brown (right)

Cap: Lace Front  
Fringe: 3.93" (10cm)  
Crown: 10.62" (27 cm)  
Nape: 3.93" (10 cm)  
Weight: 3.98 oz (113g)

**AVAILABLE COLORS:**  
**BRUNETTES:**  
Deep Smoky Brown  
Ginger Brown

**HYBRANT BRUNETTES:**  
Marble Brown-R  
Coffee Latte  
Honey Brown-R

**HYBRANT BLONDS:**  
Champagne- R  
Creamy Toffee-R  
Mochaccino-R

**REDS:**  
Mulberry Brown

**HYBRANT REDS:**  
Razberry Ice-R

**HYBRANT PASTELS:**  
Illumina-R

**MELTED:**  
Melted Plum  
Melted Marshmallow

**GRAYS:**  
Platinum Pearl

**HYBRANT GRAYS:**  
Smoky Gray-R





# BRADY

## 1704

SHORT SPIKY LAYERS  
WITH TAPERED NAPE.

Colors Shown:  
Platinum Pearl

Cap: Lace Front Machine Made  
Fringe: 3.54" (9 cm)  
Crown: 3.14" (8 cm)  
Nape: 1.57" (4 cm)  
Weight: 2.22 oz (63g)

**AVAILABLE COLORS:**  
**BRUNETTES:**  
Cappucino

**HYBRANT BRUNETTES:**  
Marble Brown-R  
Chocolate Frost-R  
Iced Mocha-R

**BLONDS:**  
Creamy Blond  
Platinum Pearl

**HYBRANT BLONDS:**  
Mochaccino-R  
Sugar Cane-R  
Creamy Toffee-R  
Champagne-R

**REDS:**  
Mulberry Brown

**HYBRANT REDS:**  
Almond Spice-R  
Plumberry Jam-R

**HYBRANT PASTELS:**  
Illumina-R  
Bubblegum-R

**GREYS:**  
Midnite Pearl  
Silver Stone™





## EDEN 1710

THIS ANGLED, A-LINE, WAVY BOB COMPLIMENTS AND LOOKS FLATTERING ON ALL FACE SHAPES.

Colors Shown:  
Smoky Gray-R (main)  
Melted Marshmallow (insets)

Cap: Lace front + Lace part  
Fringe: 7.48" (19cm)  
Crown: 7.08" (18 cm)  
Nape: 1.96" (5 cm)  
Weight: 3.38 oz (96 g)

### AVAILABLE COLORS:

**BRUNETTES:**  
Deep Smoky Brown  
Ginger Brown

### HYBRANT BRUNETTES:

Marble Brown-R  
Coffee Latte  
Honey Brown-R

### HYBRANT BLONDS:

Champagne- R  
Creamy Toffee-R  
Mochaccino-R

### REDS:

Mulberry Brown

### HYBRANT REDS:

Razberry Ice-R

### HYBRANT PASTELS:

Illumina-R

### MELTED:

Melted Plum  
Melted Marshmallow

### GRAYS:

Platinum Pearl  
Silver Stone™

### HYBRANT GRAYS:

Smoky Gray-R







# FAITH

## 1705

**TIMELESS**  
**ASYMMETRICAL BOB**  
**WITH FACE-FRAMING**  
**LAYERS.**  
 Colors Shown:  
 Dark Chocolate (main)  
 Marble Brown-LR (insets)

Cap: Lace Front, Lace Part  
 Fringe: 11.02" (28 cm)  
 Crown: 8.85" (22.5 cm)  
 Nape: 1.96" (5 cm)  
 Weight: 3.31 oz (94 g)

**AVAILABLE COLORS:**  
**BRUNETTES:**  
 Cappucino  
 Dark Chocolate

**HYBRANT BRUNETTES:**  
 Chocolate Frost-R  
 Iced Mocha-R  
 Coffee Latte-R

**LR BRUNETTES:**  
 Marble Brown-LR

**BLONDS:**  
 Creamy Blond

**HYBRANT BLONDS:**  
 Sugar Cane-R  
 Spring Honey-R  
 Champagne-R

**LR BLONDS:**  
 Creamy Toffee-LR  
 Nutmeg-F  
 Mochaccino-LR

**REDS:**  
 Mulberry Brown

**HYBRANT REDS:**  
 Almond Spice-R

**LR REDS:**  
 Plumberry Jam-LR

**HYBRANT PASTELS:**  
 Illumina-R  
 Bubblegum-R

**GRAYS:**  
 Silver Stone™





## JADEN 1707

SOFT, FLIRTY STYLE FEATURING  
BEAUTIFUL BEACH WAVES THAT  
FALL JUST BELOW THE SHOULDERS.

Color Shown:  
Champagne-R

Cap: Lace Front, Lace Part  
Fringe: 9.05" (23 cm)  
Crown: 15.74" (40 cm)  
Nape: 12.99" (33 cm)  
Weight: 4.72 oz (134 g)

**AVAILABLE COLORS:**

**BRUNETTES:**  
Dark Chocolate

**HYBRANT BRUNETTES:**  
Coffee Latte-R

**LR BRUNETTE:**  
Marble Brown-LR

**BLONDS:**  
Creamy Blond

**HYBRANT BLONDS:**  
Nutmeg-F  
Sugar Cane-R  
Spring Honey-R  
Champagne-R

**LR BLONDS:**  
Creamy Toffee-LR  
Mochaccino-LR

**REDS:**  
Mulberry Brown

**LR REDS:**  
Plumberry Jam-LR

**HYBRANT PASTELS:**  
Illumina-R  
Bubblegum-R  
Seaglass-R  
Lavendar Blush-R







# JULES

## 1706

ADD VOLUME WITH  
THIS TEXTURED  
SHOULDER-LENGTH CUT.

Color Shown:  
Iced Mocha-R (main)  
Dark Chocolate (insets)

Cap: Lace Front Machine Made  
Fringe: 9.84" (25cm)  
Crown: 12.59" (32 cm)  
Nape: 11.41" (29 cm)  
Weight: 5.00 oz (142g)

**AVAILABLE COLORS:**  
**BRUNETTES:**  
Cappucino  
Chocolate Swirl  
Dark Chocolate  
Ginger Brown

**HYBRANT BRUNETTES:**  
Chocolate Frost-R  
Iced Mocha-R  
Coffee Latte-R

**HYBRANT BRUNETTES:**  
Marble Brown-LR

**BLONDS:**  
Creamy Blond

**HYBRANT BLONDS:**  
Honey Wheat-R  
Sugar Cane-R  
Nutmeg-F  
Spring Honey-R  
Champagne-R

**LR BLONDS:**  
Mochaccino-LR  
Creamy Toffee-LR

**REDS:**  
Mulberry Brown

**HYBRANT REDS:**  
Almond Spice-R

**LR REDS:**  
Plumberry Jam-LR

**HYBRANT PASTELS:**  
Illumina-R





# TAYLOR 1708

THIS SLEEK, SOPHISTICATED  
A-LINE BOB FEATURES  
FACE-FRAMING LAYERS  
AND SIDE SWEEPED FRINGE.

Color Shown:  
Ginger Brown

Cap: Lace Front, Lace Part  
Fringe: 12.99" (33 cm)  
Crown: 9.84" (25 cm)  
Nape: 2.75" (7 cm)  
Weight: 4.05 oz (115 g)

**AVAILABLE COLORS:**  
**BRUNETTES:**  
Dark Chocolate  
Ginger Brown

**HYBRANT BRUNETTES:**  
Iced Mocha-R  
Coffee Latte-R

**LR BRUNETTES:**  
Marble Brown-LR

**BLONDS:**  
Platinum Pearl

**HYBRANT BLONDS:**  
Sugar Cane-R  
Spring Honey-R  
Champagne-R

**LR BLONDS:**  
Mochaccino-LR  
Creamy Toffee-LR

**REDS:**  
Mulberry Brown

**HYBRANT REDS:**  
Auburn Sugar-R

**LR REDS:**  
Plumberry Jam-LR

**HYBRANT PASTELS:**  
Illumina-R  
Bubblegum-R  
Lavendar Blush-R





## ZION 1712

GET A STYLISH MODERN  
LOOK WITH THIS SLEEK  
BOB WITH SHAGGY ENDS.

Colors Shown:  
Melted Plum (main, right inset)  
Illumina-R (left inset)

Cap: Lace front + Lace part  
Fringe: 8.26" (21 cm)  
Crown: 9.05" (23 cm)  
Nape: 3.93" (10 cm)  
Weight: 3.8 oz (108 g)

**AVAILABLE COLORS:**

**BRUNETTES:**

Deep Smoky Brown  
Ginger Brown

**HYBRANT BRUNETTES:**

Marble Brown-R  
Coffee Latte  
Honey Brown-R

**HYBRANT BLONDS:**

Champagne- R  
Creamy Toffee-R  
Mochaccino-R

**REDS:**

Mulberry Brown

**HYBRANT REDS:**

Razberry Ice-R

**HYBRANT PASTELS:**

Illumina-R

**MELTED:**

Melted Plum  
Melted Marshmallow

**GRAYS:**

Platinum Pearl

**HYBRANT GRAYS:**

Smoky Gray-R





# JOLIE 1662

ADD TEXTURE AND VOLUME  
WITH THIS PERFECTLY  
LAYERED, MODERN BOB.

Color Shown: Razberry Ice-R

Cap: Monofilament Top  
Fringe: 5.5" (14 cm)  
Crown: 5.5" (14 cm)  
Nape: 3.9" (10 cm)  
Weight: 3.49 oz (99 g)

## AVAILABLE COLORS:

### BRUNETTES:

Cappucino  
Chocolate Swirl  
Ginger Brown  
Kahlua Blast  
Marble Brown  
Toasted Brown

### HYBRANT

#### BRUNETTES:

Coffee Latte-R  
Chocolate Frost-R  
Maple Sugar-R

### BLONDS:

Spring Honey  
Creamy Blond

### HYBRANT

#### BLONDS:

Mocha-H  
Mochaccino-R  
Nutmeg-F  
Creamy Toast  
Creamy Toffee-R  
Champagne-R

### REDS:

Chestnut

### HYBRANT REDS:

Almond Spice-R  
Auburn Sugar-R  
Razberry Ice-R

### GRAYS:

Sandy Silver™  
Silver Stone™





# KENZIE

## 1684

STYLISH CUT FEATURING  
LONG, TEXTURED LAYERS  
ON THE BACK AND SIDES  
AND SWEEPING BANGS.

Color Shown: Sugar Cane-R

Cap: Monofilament Top  
Fringe: 5.1 - 7.1" (13-18 cm)  
Crown: 10.6" (27 cm)  
Nape: 8.7" (22 cm)  
Weight: 4.8 oz (136 g)

### AVAILABLE COLORS: B

#### RUNETTES:

Cappucino  
Dark Chocolate  
Chocolate Swirl  
Ginger Brown  
Marble Brown  
Toasted Brown

### HYBRANT BRUNETTES:

Coffee Latte-R  
Maple Sugar-R

### BLONDS:

Spring Honey  
Creamy Blond

### HYBRANT BLONDS:

Mochaccino-R  
Nutmeg-R  
Sugar Cane-R  
Creamy Toffee-R  
Champagne-R

### HYBRANT REDS:

Auburn Sugar-R  
Copper Glaze-R





# RYAN

## 1653

BE BOLD WITH THIS  
EYE-CATCHING  
FEATHERED,  
LAYERED CUT.

Color Shown: Chocolate Swirl

Cap: Monofilament Top  
Fringe: 3.9" (10 cm)  
Crown: 5.1 (13 cm)  
Nape: 3.5" (9 cm)  
Weight: 2.6 oz (74 g)

### AVAILABLE COLORS:

**BRUNETTES:**  
Dark Chocolate  
Chocolate Swirl  
Ginger Brown  
Marble Brown  
Toasted Brown

### HYBRANT BRUNETTES:

Iced Mocha-R  
Maple Sugar-R

### BLONDS:

Harvest Gold  
Strawberry Swirl  
Spring Honey  
Creamy Toffee  
Creamy Blond

### HYBRANT BLONDS:

Mochaccino-R  
Nutmeg-F  
Creamy Toffee-R

### REDS:

Chestnut

### HYBRANT REDS:

Almond Spice-R  
Auburn Sugar-R



MONOFILAMENT WIGS







## SHILO 1654

LONG, SOFT LAYERS CREATE GREAT  
MOVEMENT IN THIS FLIRTATIOUS STYLE.

Color Shown: Mocha-H

Cap: Monofilament Top  
Fringe: 8.1" (20.5 cm)  
Crown: 15" (38 cm)  
Nape: 14.8" (37.5 cm)  
Weight: 5.7 oz (160 g)

### AVAILABLE COLORS:

**BRUNETTES:**  
Expresso  
Cappucino  
Dark Chocolate  
Chocolate Swirl  
Ginger Brown  
Marble Brown  
Medium Brown

**BLONDS:**  
Spring Honey  
Creamy Blond  
Creamy Toffee

### HYBRANT BLONDS:

Mocha-H  
Nutmeg-F  
Sandlewood-H  
Champagne-R

### REDS:

Chestnut

### HYBRANT REDS:

Almond Spice-R





# ANGELICA PM 1696

ONE OF OUR NORIKO BEST SELLERS NOW AVAILABLE IN A PARTIAL MONOFILAMENT CAP.

LONG, TEXTURED LAYERS FALL TO MID-BACK IN THIS FULL, "FLOWY" DESIGN.

Color Shown: Plumberry Jam-LR

Cap: Partial Monofilament Top  
Fringe: 8.5" (21.5 cm)  
Crown: 16.1" (41 cm)  
Nape: 16.1" (41 cm)  
Weight: 6.7 oz (192 g)

## AVAILABLE COLORS:

### BRUNETTES:

Cappucino  
Dark Chocolate  
Ginger Brown  
Kahlua Blast  
Medium Brown

### HYBRANT BLONDS:

Mochaccino-R  
Honey Wheat-R  
Nutmeg-F  
Creamy Toffee-R  
Spring Honey-R  
Champagne-R

### LR BLONDS:

Marble Brown-LR  
Macadamia-LR

### LR REDS:

Crimson-LR  
Plumberry Jam-LR







## REESE PM 1697

ONE OF OUR NORIKO BEST SELLERS NOW AVAILABLE IN A PARTIAL MONOFILAMENT CAP.

THIS SASSY BOB HAS TOUSLED LAYERS AND AN EDGY FRINGE.

Color Shown: Marble Brown-LR

Cap: Partial Monofilament Top  
Fringe: 6.1" (15.5 cm)  
Crown: 5.5" (14 cm)  
Nape: 4.1" (10.5 cm)  
Weight: 3.1 oz (88 g)

**AVAILABLE COLORS:**

**BRUNETTES:**  
Chocolate Swirl  
Kahlua Blast

**HYBRANT BRUNETTES:**

Chocolate Frost-R  
Iced Mocha-R  
Maple Sugar-R

**BLONDS:**

Creamy Blond

**HYBRANT BLONDS:**

Mochaccino-R  
Nutmeg-F  
Creamy Toffee-R  
Champagne-R

**HYBRANT REDS:**

Almond Spice-R  
Razberry Ice-R

**HYBRANT PASTELS:**

Illumina-R

**LR BRUNETTES:**

Marble Brown-LR

**LR REDS:**

Plumberry Jam-LR





Color Shown: Toasted Brown

Cap: Large Machine-Made  
 Fringe: 7.3" (18.5 cm)  
 Crown: 16.1" (41 cm)  
 Nape: 16.1" (41 cm)  
 Weight: 6.9 oz (195.6 g)

**AVAILABLE COLORS:**

**BRUNETTES:**  
 Cappucino  
 Dark Chocolate  
 Chocolate Swirl  
 Ginger Brown  
 Toasted Brown  
 Medium Brown

**BLONDS:**  
 Platinum Pearl

**HYBRANT BLONDS:**  
 Nutmeg-F  
 Creamy Toffee-R  
 Spring Honey-R  
 Champagne-R

**HYBRANT UNDERLIGHTS:**  
 Cherrywood

**LR BRUNETTES:**  
 Marble Brown-LR

**LR BLONDS:**  
 Macadamia-LR

**LR REDS:**  
 Plumberry Jam-LR

# ANGELICA LARGE CAP 1702

TOP SELLING STYLE AVAILABLE  
 IN A LARGER CAP SIZE -  
 APPROXIMATELY 1.5" LARGER  
 THAN THE ORIGINAL SIZE!





# REESE LARGE CAP 1703

TOP SELLING STYLE  
AVAILABLE IN A  
LARGER CAP SIZE -  
APPROXIMATELY 1.5"  
LARGER THAN THE  
ORIGINAL SIZE!

Color Shown: Red Pepper

Cap: Large Machine-Made  
Fringe: 4.9" (12.5 cm)  
Crown: 5.7" (14.5 cm)  
Nape: 4.1" (10.5 cm)  
Weight: 3.0 oz (85.05 g)

## AVAILABLE COLORS:

**BRUNETTES:**  
Chocolate Swirl  
Ginger Brown  
Kahlua Blast

## HYBRANT BRUNETTES:

Marble Brown-R  
Coffee Latte-R  
Chocolate Frost-R  
Iced Mocha-R  
Maple Sugar-R

## BLONDS:

Creamy Toast

## HYBRANT BLONDS:

Mochaccino-R  
Nutmeg-F  
Creamy Toffee-R  
Spring Honey-R  
Champagne-R

## HYBRANT

**UNDERLIGHTS:**  
Cherrywood

## REDS:

Red Pepper  
Ginger Highlight  
Chestnut

## HYBRANT REDS:

Almond Spice-R  
Razberry Ice-R





# SKY LARGE CAP 1699

TOP SELLING STYLE NOW  
AVAILABLE IN A LARGER CAP SIZE  
– APPROXIMATELY 1.5" LARGER  
THAN THE ORIGINAL SIZE!

Color Shown:  
Iced Mocha-R

Cap: Large Machine-Made  
Fringe: 5.3" (13.5 cm)  
Crown: 5.3" (13.5 cm)  
Nape: 3.9" (10 cm)  
Weight: 2.8 oz (75 g)

## AVAILABLE COLORS:

### BRUNETTES:

Cappucino  
Dark Chocolate  
Chocolate Swirl  
Ginger Brown  
Kahlua Blast  
Marble Brown

### HYBRANT BRUNETTES:

Coffee Latte-R  
Iced Mocha-R

### BLONDS:

Spring Honey  
Creamy Blond

### HYBRANT BLONDS:

Mochaccino-R  
Nutmeg-F  
Sugar Cane-R  
Creamy Toffee-R  
Champagne-R

### REDS:

Chestnut

### HYBRANT REDS:

Raisin Glaze-H  
Almond Spice-R

### GRAYS:

Sandy Silver™  
Silver Stone™





# ANGELICA

## 1625

LONG, TEXTURED LAYERS  
FALL TO MID-BACK IN THIS  
FULL "FLOWY" DESIGN.

Color Shown:  
Butter Pecan-R

Cap: Machine-Made  
Fringe: 7.9" (20 cm)  
Crown: 16" (40.5 cm)  
Nape: 15.7" (40 cm)  
Overall: 26" (66 cm)  
Weight: 6.67 oz (189 g)

### AVAILABLE COLORS:

#### BRUNETTES:

Espresso  
Cappucino  
Dark Chocolate  
Chocolate Swirl  
Ginger Brown  
Marble Brown  
Toasted Brown  
Medium Brown  
Golden Brown

#### HYBRANT BRUNETTES:

Almond Rocka-R  
Iced Mocha-R  
Maple Sugar-R

#### BLONDS:

Vanilla Lush  
Spring Honey  
Creamy Blond

#### HYBRANT BLONDS:

Butter Pecan-R  
Mocha-H  
Mochaccino-R  
Honey Wheat-R  
Nutmeg-F  
Sugar Cane-R  
Creamy Toffee-R  
Sandalwood-H  
Champagne-R

#### REDS:

Chestnut

#### HYBRANT REDS:

Raisin Glaze-H  
Almond Spice-R  
Auburn Sugar-R  
Razberry Ice-R  
Copper Glaze-R

#### LR BLONDS:

Banana Split-LR  
Macadamia-LR

#### LR REDS:

Crimson-LR

#### HYBRANT PASTELS:

Illumina-R  
Bubblegum-R





# AVERY

## 1677

THE LONG SOFT  
LAYERS AND WAVY  
CURLS CREATE SEXY,  
FEMININE APPEAL.

Color Shown: Toasted Brown

Cap: Machine-Made  
Fringe: 4.13" (11 cm)  
Crown: 11.8" (30 cm)  
Nape: 15.4" (39 cm)  
Weight: 5.7 oz (162 g)

**AVAILABLE COLORS:**

**BRUNETTES:**

Cappucino  
Dark Chocolate  
Ginger Brown  
Marble Brown  
Toasted Brown

**HYBRANT BRUNETTES:**

Coffee Latte-R  
Almond Rocka-R  
Maple Sugar-R

**BLONDS:**

Mochaccino-R  
Creamy Blond

**HYBRANT BLONDS:**

Honey Wheat-R  
Nutmeg-R  
Creamy Toffee-R

**REDS:**

Chestnut

**HYBRANT REDS:**

Burnt Sienna-R





# BILLIE 1701

SHORT, SPIKY, AND  
FLATTERING STYLE FOR A  
DECIDEDLY EDGY LOOK.

Color Shown: Marble Brown-R

Cap: Feather Light  
Machine-Made  
Fringe: 3.5" (9 cm)  
Crown: 3.5" (9 cm)  
Nape: 1.4" (3.5 cm)  
Weight: 2.3 oz (65.2 g)

**AVAILABLE COLORS:**  
**BRUNETTES:**  
Cappucino  
Ginger Brown

**HYBRANT BRUNETTES:**  
Marble Brown-R  
Coffee Latte-R  
Chocolate Frost-R

**BLONDS:**  
Creamy Blond

**HYBRANT BLONDS:**  
Mochaccino-R  
Nutmeg-F  
Creamy Toffee-R  
Champagne-R

**HYBRANT UNDERLIGHTS:**  
Cherrywood

**HYBRANT REDS:**  
Razberry Ice-R

**LR REDS:**  
Plumerry Jam-R

**HYBRANT PASTELS:**  
Illumina-R  
Bubblegum-R

**GRAYS:**  
Silver Stone™





# CARRIE 1674

THIS TOUSLED, CURLY STYLE FALLS JUST BELOW THE SHOULDER AND HAS A SOFT, FACE-FRAMING FRINGE.

Color Shown: Auburn Sugar-R

Cap: Machine-Made  
Fringe: 7" (18 cm)  
Crown: 10.4" (26.5 cm)  
Nape: 7.5" (19 cm)  
Weight: 5.2 oz (147 g)

## AVAILABLE COLORS:

### BRUNETTES:

Espresso  
Dark Chocolate  
Cappucino  
Ginger Brown  
Marble Brown  
Toasted Brown

### HYBRANT BRUNETTES:

Coffee Latte-R  
Almond Rocka-R  
Maple Sugar-R

### BLONDS:

Spring Honey  
Creamy Blond

### HYBRANT BLONDS:

Butter Pecan-R  
Mochaccino-R  
Honey Wheat-R  
Nutmeg-R  
Sugar Cane-R  
Creamy Toffee-R  
Champagne-R

### REDS:

Garnet Glaze

### HYBRANT REDS:

Almond Spice-R  
Auburn Sugar-R  
Razberry Ice-R  
Irish Spice-R  
Copper Glaze-R





# CLAIRE 1647

SHORT, LAYERED CUT FLIPS AT THE COLLAR AND HAS SOFT, TEXTURED EDGES.

Color Shown: Chestnut

Cap: Machine-Made  
Fringe: 5.5" (14 cm)  
Crown: 8.3" (21 cm)  
Nape: 5.9" (15 cm)  
Weight: 3.2 oz (92 g)

## AVAILABLE COLORS:

### BRUNETTES:

Cappucino  
Dark Chocolate  
Chocolate Swirl  
Ginger Brown  
Marble Brown  
Toasted Brown  
Medium Brown

### HYBRANT BRUNETTES:

Almond Rocka-R  
Iced Mocha-R  
Maple Sugar-R

### BLENDS:

Harvest Gold  
Strawberry Swirl  
Vanilla Lush  
Caramel Cream  
Spring Honey  
Creamy Blond

### HYBRANT BLENDS:

Mocha-H  
Mochaccino-R  
Honey Wheat-R  
Nutmeg-F  
Sugar Cane-R  
Creamy Toffee-R  
Sandalwood-H  
Champagne-R

### REDS:

Chestnut

### HYBRANT REDS:

Raisin Glaze-H  
Terracotta-H  
Almond Spice-R  
Razberry Ice-R  
Copper Glaze-R





# CORY 1633

THIS CLASSIC BOB FRAMES THE FACE WITH A SOFT, TEXTURED FRINGE.

Color Shown: Cappucino

Cap: Machine-Made  
Fringe: 3.1" (8 cm)  
Crown: 8.5" (21.5 cm)  
Nape: 1.8" (4.5 cm)  
Weight: 3.1 oz (89 g)

## AVAILABLE COLORS:

### BRUNETTES:

Espresso  
Cappucino  
Dark Chocolate  
Ginger Brown  
Marble Brown  
Toasted Brown  
Medium Brown  
Light Chocolate  
Pecan Brown

### BLONDS:

Harvest Gold  
Frosti Blond  
Strawberry Swirl  
Vanilla Lush  
Caramel Cream  
Spring Honey  
Gold Blond  
Creamy Blond

### REDS:

Chestnut

### GRAYS:

Sandy Silver™  
Silver Stone™





# DOLCE 1686

VOLUMINOUS WAVY  
LAYERS SOFTLY  
GRADUATE TO THE  
CHIN CREATING A  
CHIC, FLIRTY BOB.

Color Shown: Coffee Latte-R

Cap: Machine-Made  
Fringe: 6.1" (15.5 cm)  
Crown: 7.48" (19 cm)  
Nape: 2.8" (7 cm)  
Weight: 2.9 oz (83 g)

**AVAILABLE COLORS:**

**BRUNETTES:**  
Dark Chocolate  
Ginger Brown  
Marble Brown

**HYBRANT BRUNETTES:**

Chocolate Frost-R  
Coffee Latte-R  
Almond Rocka-R  
Maple Sugar-R

**BLONDS:**

Creamy Blond

**HYBRANT BLONDS:**

Mochaccino-R  
Sugar Cane -R  
Creamy Toffee-R  
Nutmeg-R  
Champagne-R

**HYBRANT REDS:**

Razberry Ice-R

**LR REDS:**

Crimson-LR

**GRAYS:**

Silver Stone™





# DREW 1631

MAKE A BOLD STATEMENT WITH THIS "EDGY" LOOK CREATED USING AN OVERALL POINT-CUT LAYERING TECHNIQUE.

Color Shown:  
Creamy Toffee-R

Cap: Machine-Made  
Fringe: 2.8" (7 cm)  
Crown: 3.4" (8.5 cm)  
Nape: 2.4" (6 cm)  
Weight: 2.3 oz (66 g)

## AVAILABLE COLORS:

### BRUNETTES:

Cappucino  
Dark Chocolate  
Ginger Brown  
Marble Brown

### HYBRANT BRUNETTES:

Chocolate Frost-R  
Iced Mocha-R  
Maple Sugar-R

### BLONDS:

Harvest Gold  
Frosti Blond  
Strawberry Swirl  
Spring Honey  
Creamy Blond

### HYBRANT BLONDS:

Mocha-H  
Mochaccino-R  
Nutmeg-F  
Creamy Toffee-R  
Champagne-R

### REDS:

Burgundy Rosa  
Chestnut

### HYBRANT REDS:

Razberry Ice-R  
Copper Glaze-R

### GRAYS:

Sandy Silver™  
Silver Stone™











## ELLIOT 1709

THIS LONG TOUSLED STYLE WITH LAYERED BANGS WILL HAVE YOU LOOKING BEAUTIFUL AND STYLISH EFFORTLESSLY.

Colors Shown:  
Deep Smoky Brown (main)  
Melted Plum (insets)

Cap: Lace front + Lace part  
Fringe: 3.93" (10cm)  
Crown: 9.84" (25cm)  
Nape: 3.93" (10 cm)  
Weight: 3.98 oz (113g)

**AVAILABLE COLORS:**

**BRUNETTES:**  
Deep Smoky Brown  
Ginger Brown

**HYBRANT BRUNETTES:**

Marble Brown-R  
Coffee Latte  
Honey Brown-R

**HYBRANT BLONDS:**

Champagne- R  
Creamy Toffee-R  
Mochaccino-R

**REDS:**

Mulberry Brown

**HYBRANT REDS:**

Razberry Ice-R

**HYBRANT PASTELS:**

Illumina-R

**MELTED:**

Melted Plum  
Melted Marshmallow

**GRAYS:**

Platinum Pearl  
Smoky Gray-R





# EMERSON 1698

THIS BOLD UNISEX CUT CAN BE WORN TOUSLED FOR A RUGGED MASCULINE LOOK OR STYLED INTO A SOFT, FEMININE SILHOUETTE.

Color Shown: Coffee Latte-R

Cap: Machine-Made  
Fringe: 4.5" (11.5 cm)  
Crown: 3.9" (10 cm)  
Nape: 1.4" (3.5 cm)  
Weight: 2.5 oz (70 g)

## AVAILABLE COLORS:

**BRUNETTES:**  
Dark Chocolate  
Blueberry Burst  
Marble Brown

## HYBRANT BRUNETTES:

Coffee Latte-R  
Chocolate Frost-R

## HYBRANT BLONDS:

Mochaccino-R  
Champagne-R

## HYBRANT REDS:

Razberry Ice-R

## HYBRANT PASTELS:

Illumina-R

## GRAYS:

Silver Stone™





# EVA

## 1672

THIS TIGHTLY  
TAPERED, INVERTED  
BOB HAS SOFT, TOP  
LAYERS THAT FALL  
INTO A SIDE-SWEPT  
FRINGE.

Color Shown: Honey Wheat-R

Cap: Machine-Made  
Fringe: 5.1" (13 cm)  
Crown: 4.5" (11.5 cm)  
Nape: 2" (5 cm)  
Weight: 2.15 oz (61 g)

### AVAILABLE COLORS:

**BRUNETTES:**  
Dark Chocolate  
Ginger Brown  
Marble Brown

### HYBRANT BRUNETTES:

Coffee Latte-R  
Iced Mocha-R

### BLONDS:

Spring Honey  
Creamy Blond

### HYBRANT BLONDS:

Mochaccino-R  
Honey Wheat-R  
Nutmeg-R  
Sugar Cane-R  
Creamy Toffee-R

### HYBRANT REDS:

Almond Spice-R  
Irish Spice-R

### GRAYS:

Black Onyx  
Midnite Pearl  
Sandy Silver™  
Silver Stone™





# HAILEY 1680

THIS SLIGHTLY  
LONGER GRADUATED  
BOB HAS SUBTLE  
LAYERS IN THE FRONT.

Color Shown: Champagne-R

Cap: Machine-Made  
Fringe: 7.1" (18 cm)  
Crown: 8.3" (21 cm)  
Nape: 2.4" (6 cm)  
Weight: 4.2 oz (120 g)



## AVAILABLE COLORS:

**BRUNETTES:**  
Chocolate Lava  
Dark Chocolate  
Java Frost  
Ginger Brown  
Marble Brown

**HYBRANT BRUNETTES:**  
Coffee Latte-R  
Chocolate Frost-R  
Almond Rocka-R  
Maple Sugar-R

**BLONDS:**  
Creamy Blond

**HYBRANT BLONDS:**  
Honey Wheat-R  
Sugar Cane-R  
Creamy Toffee-R  
Champagne-R

**REDS:**  
Garnet Glaze



# IVY 1679

EDGY, PAGE-BOY STYLE IS CUT WITH A ROUND, HEAVY FRINGE.

Color Shown: Chocolate Frost-R

Cap: Machine-Made  
 Fringe: 3.7" (9.5 cm)  
 Crown: 4.7" (12 cm)  
 Nape: 2" (5 cm)  
 Weight: 2.29 oz (65 g)



## AVAILABLE COLORS:

**BRUNETTES:**  
 Dark Chocolate  
 Ginger Brown  
 Marble Brown

**HYBRANT BRUNETTES:**  
 Coffee Latte-R  
 Chocolate Frost-R  
 Almond Rocka-R  
 Iced Mocha-R

**BLONDS:**  
 Spring Honey  
 Creamy Blond  
 Platinum Pearl

**HYBRANT BLONDS:**  
 Mochaccino-R  
 Nutmeg-R  
 Sugar Cane-R  
 Creamy Toffee-R  
 Champagne-R

**REDS:**  
 Chestnut

**HYBRANT REDS:**  
 Auburn Sugar-R

**GRAYS:**  
 Sandy Silver™  
 Silver Stone™



# JACKSON 1669

THIS SLEEK, SHOULDER LENGTH  
STYLE FEATURES FLATTERING,  
FACE-FRAMING LAYERS.

Color Shown:  
Chocolate Swirl

Cap: Machine-Made  
Fringe: 6.9" (17.5 cm)  
Crown: 9.1" (23 cm)  
Nape: 8.3" (21 cm)  
Weight: 4.27 oz (121 g)

## AVAILABLE COLORS:

### BRUNETTES:

Espresso  
Cappucino  
Dark Chocolate  
Chocolate Swirl  
Java Frost  
Ginger Brown  
Marble Brown  
Toasted Brown

### HYBRANT BRUNETTES:

Chocolate Frost-R  
Almond Rocka-R  
Iced Mocha-R  
Maple Sugar-R

### BLONDS:

Strawberry Swirl  
Spring Honey  
Creamy Blond

### HYBRANT BLONDS:

Butter Pecan-R  
Mochaccino-R  
Honey Wheat-R  
Nutmeg-R  
Sugar Cane-R  
Creamy Toffee-R  
Champagne-R

### REDS:

Chestnut

### HYBRANT REDS:

Cayenne Spice-R  
Auburn Sugar-R  
Razberry Ice-R  
Irish Spice-R  
Copper Glaze-R

### GRAYS:

Silver Stone™





# KATE 1668

GEOMETRIC, FRINGED  
BOB IS COMPLEMENTED  
BY RAZOR-FINISHED  
TIERS AND ARCHED ENDS.

Color Shown:  
Creamy Blond

Cap: Machine-Made  
Fringe: 5.9" (15 cm)  
Crown: 4.7" (12 cm)  
Nape: 3.5" (9 cm)  
Weight: 2.54 oz (72 g)

## AVAILABLE COLORS:

**BRUNETTES:**  
Dark Chocolate  
Chocolate Swirl  
Java Frost  
Marble Brown

## HYBRANT BRUNETTES:

Chocolate Frost-R  
Iced Mocha-R  
Maple Sugar-R

## BLONDS:

Creamy Blond

## HYBRANT BLONDS:

Butter Pecan-R  
Mochaccino-R  
Nutmeg-R  
Creamy Toffee-R  
Champagne-R

## REDS:

Ginger Highlight  
Chestnut

## HYBRANT

**REDS:**  
Almond Spice-R  
Raspberry Ice-R  
Irish Spice-R

## GRAYS:

Sandy Silver™





## LEXY 1642

CAREFREE LAYERED CUT WITH  
WHIMSICAL, FLIPPED ENDS.

Color Shown:  
Terracotta-H

Cap: Machine-Made  
Fringe: 3.9" (10 cm)  
Crown: 4.3" (11 cm)  
Nape: 4.7" (12 cm)  
Weight: 2.86 oz (81 g)

### AVAILABLE COLORS:

**BRUNETTES:**  
Dark Chocolate  
Ginger Brown  
Marble Brown  
Toasted Brown

**BLONDS:**  
Harvest Gold  
Strawberry Swirl  
Spring Honey  
Creamy Blond

**HYBRANT BLONDS:**  
Mocha-H  
Nutmeg-F  
Sandalwood-H  
Champagne-R

**REDS:**  
Chestnut

**HYBRANT REDS:**  
Raisin Glaze-H  
Terracotta-H





# MARIAH 1613

SOFT, TOUSLED  
CURLS FRAME THIS  
CHIN-LENGTH BOB.

Color Shown: Light Chocolate

Cap: Machine-Made  
Fringe: 4.1" (10.5 cm)  
Crown: 4.9" (12.5 cm)  
Nape: 4.3" (11 cm)  
Weight: 3.21 oz (91 g)

## AVAILABLE COLORS:

### BRUNETTES:

Cappucino  
Dark Chocolate  
Ginger Brown  
Marble Brown  
Medium Brown  
Light Chocolate

### BLONDS:

Harvest Gold  
Sandy Blond  
Vanilla Lush  
Spring Honey  
Gold Blond  
Creamy Blond

### REDS:

Chestnut  
Dark Rust







## MASON 1632

MIXED LAYERS WITH BEVELED  
ENDS GIVES THIS STYLE ATTITUDE  
AND A SOPHISTICATED "KICK".



Color Shown:  
Sandalwood-H

Cap: Machine-Made  
Fringe: 2.4" (6 cm)  
Crown: 3" (7.5 cm)  
Nape: 1.6" (4 cm)  
Weight: 2.61 oz (74 g)

### AVAILABLE COLORS:

**BRUNETTES:**  
Cappucino  
Dark Chocolate  
Chocolate Swirl  
Ginger Brown  
Marble Brown  
Medium Brown  
Pecan Brown

**HYBRANT BRUNETTES:**  
Iced Mocha-R  
Maple Sugar-R

**BLONDS:**  
Harvest Gold  
Frosti Blond  
Strawberry Swirl  
Vanilla Lush  
Caramel Cream  
Spring Honey  
Gold Blond  
Creamy Blond

**HYBRANT BLONDS:**  
Mochaccino-R  
Nutmeg-F  
Creamy Toffee-R  
Sandalwood-H  
Champagne-R

**REDS:**  
Burgundy Rosa  
Chestnut

**HYBRANT REDS:**  
Almond Spice-R  
Razberry Ice-R  
Copper Glaze-R

**GRAYS:**  
Silver Stone™



# MAY 1673

ELEGANTLY RELAXED BOB HAS A WISPY PERIMETER AND FEATHERY-SWEPT SIDES.

Color Shown:  
Cayenne Spice-R

Cap: Machine-Made  
Fringe: 7" (18 cm)  
Crown: 9" (23 cm)  
Nape: 3.9" (10 cm)  
Weight: 3.63 oz (103 g)

## AVAILABLE COLORS:

**BRUNETTES:**  
Cappucino  
Dark Chocolate  
Java Frost  
Marble Brown

## HYBRANT BRUNETTES:

Coffee Latte-R  
Chocolate Frost-R  
Almond Rocka-R  
Iced Mocha-R  
Maple Sugar-R

## HYBRANT BLONDS:

Butter Pecan-R  
Mochaccino-R  
Honey Wheat-R  
Nutmeg-R  
Sugar Cane-R  
Creamy Toffee-R  
Champagne-R

**BLONDS:**  
Spring Honey  
Creamy Blond

**REDS:**  
Garnet Glaze

**HYBRANT REDS:**  
Cayenne Spice-R  
Razberry Ice-R





# MEGAN 1607

THIS SEMI-WEDGE BOB  
TAPERS IN THE BACK.

Color Shown: Spring Honey  
Frosti Blond (Back view inset)

Cap: Machine-Made  
Fringe: 4.5" (11.5 cm)  
Crown: 4.9" (12.5 cm)  
Nape: 2.2" (5.5 cm)  
Weight: 2.68 oz (76 g)

## AVAILABLE COLORS:

### BRUNETTES:

Cappucino  
Dark Chocolate  
Ginger Brown  
Marble Brown  
Toasted Brown  
Medium Brown

### BLONDS:

Harvest Gold  
Sunny Blond  
Frosti Blond  
Strawberry Swirl  
Vanilla Lush  
Caramel Cream  
Spring Honey  
Creamy Blond

### REDS:

Chestnut

### GRAYS:

Sandy Silver™  
Silver Stone™





# MILLIE

## 1655

A CLASSIC STYLE WITH A MODERN TWIST. THE EXAGGERATED, WISPY NECKLINE AND POINT-SPECIFIC LAYERS ARE DESIGNED TO HIGHLIGHT THE CHEEKBONES AND OPEN UP THE FACE.

Color Shown: Creamy Toffee-R

Cap: Machine-Made  
 Fringe: 3.7" (9.5 cm)  
 Crown: 4.7" (12 cm)  
 Nape: 4.7" (12 cm)  
 Weight: 2.5 oz (71 g)

### AVAILABLE COLORS:

#### BRUNETTES:

Cappucino  
 Dark Chocolate  
 Chocolate Swirl  
 Ginger Brown  
 Marble Brown  
 Toasted Brown

#### HYBRANT BRUNETTES:

Iced Mocha-R  
 Maple Sugar-R

#### BLONDS:

Creamy Blond

#### HYBRANT BLONDS:

Mochaccino-R  
 Nutmeg-F  
 Creamy Toffee-R  
 Champagne-R

#### REDS:

Chestnut

#### HYBRANT REDS:

Almond Spice-R  
 Auburn Sugar-R  
 Razberry Ice-R  
 Copper Glaze-R

#### GRAYS:

Midnite Pearl  
 Silver Stone™





# NORI 1682

A SHORT AND  
SHAGGY STYLE WITH  
RAZORED, TEXTURED  
FRINGE AND NAPE.

Color Shown:  
Maple Sugar-R

Cap: Machine-Made  
Fringe: 3.5" (9 cm)  
Crown: 4.7" (12 cm)  
Nape: 3.1" (8 cm)  
Weight: 2.6 oz (73 g)

## AVAILABLE COLORS:

### BRUNETTES:

Chocolate Swirl  
Ginger Brown  
Marble Brown

### HYBRANT BRUNETTES:

Coffee Latte-R  
Chocolate Frost-R  
Almond Rocka-R  
Iced Mocha-R  
Maple Sugar-R

### BLONDS:

Spring Honey

### HYBRANT BLONDS:

Mochaccino-R  
Nutmeg-R  
Sugar Cane-R  
Creamy Toffee-R  
Champagne-R

### REDS:

Chestnut

### HYBRANT REDS:

Razberry Ice-R  
Copper Glaze-R

### GRAYS:

Silver Stone™





# PAM 1606

A BASIC SHORT CUT  
WITH FEATHERED  
LAYERS.

Color Shown: Harvest Gold

Cap: Machine-Made  
Fringe: 2.4" (6 cm)  
Crown: 3.1" (8 cm)  
Nape: 1.6" (4 cm)  
Weight: 2.1 oz (59 g)

## AVAILABLE COLORS:

### BRUNETTES:

Dark Chocolate  
Ginger Brown  
Marble Brown  
Medium Brown  
Golden Brown  
Light Chocolate

### BLONDS:

Harvest Gold  
Frosti Blond  
Strawberry Swirl  
Spring Honey  
Gold Blond  
Creamy Blond

### REDS:

Chestnut

### GRAYS:

Silver Stone™  
38  
51  
56





# REESE

## 1660

THIS SASSY BOB HAS  
TOUSLED LAYERS AND  
AN EDGY FRINGE.

Color Shown:  
Butter Pecan-R

Cap: Machine-Made  
Fringe: 5" (12.5 cm)  
Crown: 5.9" (15 cm)  
Nape: 3.9" (10 cm)  
Weight: 2.89 oz (82 g)

### AVAILABLE COLORS:

#### BRUNETTES:

Espresso  
Cappucino  
Dark Chocolate  
Chocolate Swirl  
Ginger Brown  
Marble Brown  
Toasted Brown

#### HYBRANT BRUNETTES:

Chocolate Frost-R  
Iced Mocha-R  
Maple Sugar-R

#### BLONDS:

Harvest Gold  
Strawberry Swirl  
Vanilla Lush  
Spring Honey  
Creamy Blond

#### HYBRANT BLONDS:

Butter Pecan-R  
Mocha-H  
Mochaccino-R  
Nutmeg-F  
Creamy Toast  
Creamy Toffee-R  
Sandalwood-H  
Champagne-R

#### REDS:

Red Pepper  
Ginger Highlight  
Chestnut

#### HYBRANT REDS:

Raisin Glaze-H  
Terracotta-H  
Almond Spice-R  
Auburn Sugar-R  
Razberry Ice-R  
Irish Spice-R  
Copper Glaze-R

#### GRAYS:

Sandy Silver™  
Silver Stone™







# ROBIN 1639

STUNNING! THE GRADUATED, INTERIOR LAYERS CREATE A SOFT SILHOUETTE WITH MAXIMUM MOVEMENT.

Color Shown: Dark Chocolate

Cap: Machine-Made  
Fringe: 4.3" (11 cm)  
Crown: 17.5" (44.5 cm)  
Nape: 17.3" (44 cm)  
Overall: 25" (63.5 cm)  
Weight: 5.11 oz (145 g)

**AVAILABLE COLORS:**

**BRUNETTES:**  
Espresso  
Cappucino  
Dark Chocolate  
Chocolate Swirl  
Ginger Brown  
Marble Brown  
Toasted Brown  
Light Chocolate  
Pecan Brown

**BLONDS:**  
Harvest Gold  
Vanilla Lush  
Caramel Cream  
Spring Honey  
Gold Blond  
Creamy Blond

**HYBRANT BLONDS:**  
Nutmeg-F  
Sandalwood-H  
Champagne-R

**REDS:**  
Burgundy Rosa  
Chestnut

**HYBRANT REDS:**  
Almond Spice-R



# RONI 1641

MAXIMIZED VOLUME! THIS BOLD, MULTI-LAYERED STYLE IS FULL OF TEXTURE AND HUGS THE NAPE WITH TAPERED EDGES.



Color Shown:  
Burgundy Rosa

Cap: Machine-Made  
Fringe: 4.5" (11.5 cm)  
Crown: 4.3" (11 cm)  
Nape: 2" (5 cm)  
Weight: 2.36 oz (67 g)

**AVAILABLE COLORS:**  
**BRUNETTES:**  
Cappucino  
Ginger Brown  
Marble Brown

**BLENDS:**  
Harvest Gold  
Frosti Blond  
Strawberry Swirl  
Vanilla Lush  
Caramel Cream  
Spring Honey

**REDS:**  
Burgundy Rosa  
Paprika-R  
Chestnut





# SALLY 1616

SHORT LAYERS AND A SOFT FRINGE FRAME THE FACE  
WHILE A TAPERED BACK HUGS THE NAPE.

Color Shown:  
Frosti Blond

Cap: Machine-Made  
Fringe: 3.9" (10 cm)  
Crown: 4.9" (12.5 cm)  
Nape: 2.4" (6 cm)  
Weight: 2.7 oz (77 g)

AVAILABLE COLORS:

**BRUNETTES:**  
Cappucino  
Dark Chocolate  
Ginger Brown  
Marble Brown  
Toasted Brown  
Medium Brown  
Light Chocolate

**BLONDS:**  
Frosti Blond  
Strawberry Swirl  
Vanilla Lush  
Spring Honey  
Gold Blond  
Creamy Blond

**REDS:**  
Chestnut

**GRAYS:**  
Silver Stone™



# SANDIE 1648

THIS TEXTURED BOB HAS A TOUSLED FINISH.

Color Shown: Midnite Pearl

Cap: Machine-Made  
Fringe: 5.1" (13 cm)  
Crown: 6.3" (16 cm)  
Nape: 3.5" (9 cm)  
Weight: 2.75 oz (78 g)

## AVAILABLE COLORS:

**BRUNETTES:**  
Expresso  
Dark Chocolate  
Ginger Brown  
Marble Brown  
Toasted Brown  
Pecan Brown

**HYBRANT BRUNETTES:**  
Iced Mocha-R  
Maple Sugar-R

**BLONDS:**  
Harvest Gold  
Strawberry Swirl  
Spring Honey  
Creamy Blond

**HYBRANT BLONDS:**  
Mocha-H  
Mochaccino-R  
Nutmeg-F  
Creamy Toffee-R  
Sandalwood-H  
Champagne-R

**REDS:**  
Ginger Highlight  
Chestnut

**HYBRANT REDS:**  
Auburn Sugar-R

**GRAYS:**  
Midnite Pearl  
Silver Stone™



# SEVILLE

## 1685

CLASSIC, MEDIUM-LENGTH  
STYLE FEATURES A SUBTLE  
A-LINE PERIMETER AND  
SQUARE LAYERS.

Color Shown:  
Crimson-LR

Cap: Machine-Made  
Fringe: 5.1" (13 cm)  
Crown: 10.6" (27 cm)  
Nape: 9.8" (25 cm)  
Weight: 5.43 oz (154 g)

### AVAILABLE COLORS:

**BRUNETTES:**  
Dark Chocolate  
Chocolate Swirl  
Ginger Brown  
Marble Brown

### HYBRANT BRUNETTES:

Coffee Latte-R  
Almond Rocka-R  
Iced Mocha-R  
Maple Sugar-R

### BLONDS:

Spring Honey  
Creamy Blond

### HYBRANT BLONDS:

Butter Pecan-R  
Mochaccino-R  
Nutmeg-R  
Creamy Toffee-R

### LR BLONDS:

Banana Split-LR  
Macadamia-LR

### HYBRANT REDS:

Irish Spice-R  
Copper Glaze-R

### LR REDS:

Crimson-LR





## SKY 1649

A WISPY VOLUMINOUS BOB  
WITH SOFT, FEATHERY LAYERS.

Color Shown: Ginger Highlight

Cap: Machine-Made  
Fringe: 5.5" (14 cm)  
Crown: 5.1" (13 cm)  
Nape: 3.5" (9 cm)  
Weight: 2.79 oz (79 g)



### AVAILABLE COLORS:

#### BRUNETTES:

Espresso  
Cappuccino  
Dark Chocolate  
Chocolate Swirl  
Ginger Brown  
Marble Brown  
Toasted Brown  
Medium Brown  
Pecan Brown

### HYBRANT BRUNETTES:

Coffee Latte-R  
Almond Rocka-R  
Iced Mocha-R  
Maple Sugar-R

#### BLONDS:

Harvest Gold  
Frosti Blond  
Strawberry Swirl  
Vanilla Lush  
Caramel Cream  
Spring Honey  
Gold Blond  
Creamy Blond

### HYBRANT BLONDS:

Butter Pecan-R  
Mocha-H  
Mochaccino-R  
Honey Wheat-R  
Nutmeg-F  
Sugar Cane-R  
Creamy Toffee-R  
Sandalwood-H  
Champagne-R

### REDS:

Burgundy  
Burgundy Rosa  
Red Pepper  
Ginger Highlight  
Bronzed Brown  
Chestnut  
Dark Rust

### HYBRANT REDS:

Raisin Glaze-H  
Terracotta-H  
Almond Spice-R  
Auburn Sugar-R  
Razberry Ice-R  
Copper Glaze-R

#### GRAYS:

Midnite Pearl  
Sandy Silver™  
Silver Stone™



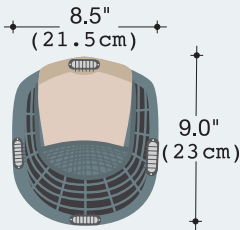


# MILAN 1658

AN INNOVATIVE HAIR ENHANCEMENT THAT ADDS LENGTH AND SMOOTH FACE FRAMING LAYERS.



BEFORE



Color Shown: Nutmeg-F

- Base: Monofilament Top
- Fringe: 8.5" (21.5 cm)
- Crown: 14" (35.5 cm)
- Nape: 13.5" (34.3 cm)
- Weight: 4 oz (115 g)

AVAILABLE COLORS:

BRUNETTES:

- Espresso
- Cappucino
- Dark Chocolate
- Chocolate Swirl
- Ginger Brown
- Marble Brown
- Toasted Brown

BLENDS:

- Vanilla Lush
- Spring Honey
- Creamy Blend

HYBRANT BLONDS:

- Nutmeg-F
- Creamy Toast
- Sandalwood-H
- Champagne-R

REDS:

- Chestnut

HYBRANT REDS:

- Almond Spice-R



# ACCESSORIES



*Christine*<sup>™</sup>  
HEADWEAR

Aderans Hair Goods is  
now the sole USA distributor  
of Christine Headwear<sup>™</sup>  
turbans and scarves!

A light collection made in the  
best possible quality.

Contact Your Sales Consultant  
800.353.7363

2138-0594  
LOTUS



DISPLAY  
MANNEQUINS



8123  
21" MANNEQUIN



8119  
14" MANNEQUIN



9580 WIG CAP

Available Colors:  
Beige, Black, and Brown



9581 WIG LINER  
Open Mesh

Available Colors:  
Beige, Black, and Brown



8128  
18" WHITE  
MANNEQUIN  
NO LOGO



8129  
18" GRAY  
MANNEQUIN  
WITH LOGO



8130  
18" BLACK  
MANNEQUIN  
WITH LOGO



8131  
18" WHITE  
MANNEQUIN  
WITH LOGO

9582  
WIG STAND  
PACKAGE  
(3pc package contains  
colors: Black, Blue & Gray)

Sold separately:  
9583  
BLACK  
BLUE  
GRAY



Convenient "snap together" stand for wig storage or service.



9584  
ROP WIG STAND



# ACCESSORIES (CONTINUED)



9587  
ROP WIG LIFT COMB



9591 ROP FOLDING  
BRUSH



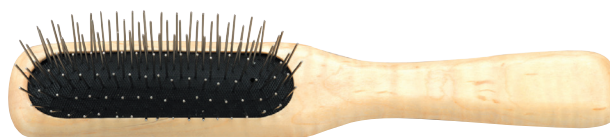
9589  
ROP BAMBOO BASIN  
COMB



9590  
ROP TAIL COMB



9588  
ROP BAMBOO  
DETANGLE COMB



965  
WIRE BRUSH



9585  
SILVER COMB CLIP  
(SOLD IN 12 PCS)

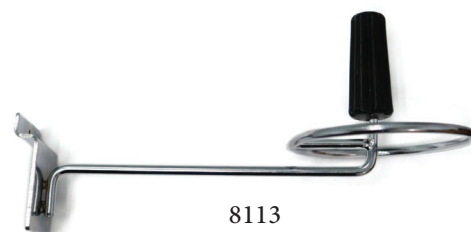


9586  
BULK BEIGE  
WIG CAP  
(SOLD IN 12 PCS)



9511  
SWATCHES

The color swatches  
let you see your  
perfect hair match.



8113  
MANNEQUIN  
HOOK





ROP  
Shampoo  
9950 | 8 oz.  
9954 | 2 oz.

ROP Light  
Conditioner  
9953 | 8oz.  
9955 | 2oz

ROP Revive  
Liquid  
Enhancement  
9951 | 8 oz.

ROP Protect  
Holding Spray  
9952 | 8 oz.  
9956 | 2oz

## RENÉ of PARIS MAINTENANCE TOOLS

### RENE OF PARIS PREPARE SHAMPOO

This luxurious shampoo is formulated with the ultimate in moisture replenishing cleansers. The René of Paris™ Prepare Shampoo helps maintain the smoothness, strength and polish of your hair.

The gentle combination of plant and vegetable extracts, along with natural essential oils and vitamins, provides a gentle but thorough cleansing of your hair. The results will revolutionize how you feel in your hair.

### RENE OF PARIS REVIVE LIQUID ENHANCEMENT

The finest advanced liquid developed for synthetic fiber hair. The René of Paris™ Revive Liquid Enhancement will revive your hair and give it the brand new feel.

Not only helps eliminate frizz while adding luster, texture and volume, but also protects your hair from the daily stresses.

### RENE OF PARIS PROTECT HOLDING SPRAY

The final stop in maintaining and styling your hair. This holding spray adds shine while gently, yet firmly, holding your desired style.

We are delighted that you have chosen to become one of our valued customers. We appreciate your business as well as any inquiries regarding the following:

#### APPLICABILITY:

1. The following terms and conditions ("Terms") are the only terms which govern the sale of the goods ("Goods") by Aderans Hair Goods, Inc. ("AHG") to its customers (each referred to hereafter as "Buyer," or "You"). Notwithstanding anything herein to the contrary, if a written contract signed by both parties is in existence covering the sale of the Goods covered hereby, the terms and conditions of said contract shall prevail to the extent they are inconsistent with these Terms.

2. These Terms, together with the applicable invoice and the Statement of Policy defined below (collectively, this "Agreement"), comprise the entire agreement between the parties, and supersede all prior or contemporaneous understandings, agreements, negotiations, representations and warranties, and communications, both written and oral. These Terms prevail over any of Buyer's general terms and conditions of purchase regardless whether or when Buyer has submitted its purchase order or such terms. Acceptance of Buyer's purchase order or fulfillment of Buyer's order does not constitute acceptance of any of Buyer's terms and conditions and does not serve to modify or amend these Terms.

**ACCEPTANCE OF PURCHASE ORDER.** AHG has the right, in its sole discretion, to accept or reject any purchase order issued by You. AHG may accept any purchase order by confirming the order (whether by written confirmation, invoice or otherwise) or by delivering the Goods, whichever occurs first. No purchase order is binding on AHG unless accepted by AHG.

**PRICES.** You shall purchase the Goods from AHG at the prices set forth in AHG's price list in effect at the time that AHG accepts Your purchase order ("Prices"). Prices are exclusive of, and You are solely responsible for, and shall pay, any and all taxes, with respect to, or measured by, the manufacture, sale, shipment, use or Price of the Goods; provided, however, that You shall not be responsible for any taxes imposed on, or with respect to, AHG's income, revenues, gross receipts, personnel or real or personal property or other assets.

**PAYMENT TERMS:** AHG accepts payment by Visa, MasterCard, AMEX, Discover, money order, wire transfer and COD. Upon approval, credit terms may be available.

**CREDIT PURCHASES:** If You wish to apply for an AHG 30-day open account (NET -30), contact Your AHG sales representative and request a credit application.

**SHIPPING/HANDLING:** You will pay for all shipping charges and insurance costs. AHG offers shipping via UPS next day air, 2-3 day air, and ground. There is a handling charge of \$1.00 for all orders. For each purchase order accepted by AHG, AHG may, in its sole discretion, without liability or penalty, make partial shipments of Goods to You. Each shipment will constitute a separate sale and You will pay for the units shipped whether such shipment is in whole or partial fulfillment of a purchase order.

**TRANSFER OF TITLE & RISK OF LOSS:** Title passes to You upon delivery of the Goods to the

address You specified in the purchase order. Risk of loss or damage to the Goods passes to You upon AHG's tender of such units to the carrier at AHG's location in Chatsworth, CA.

**STATEMENT OF POLICY:** You must comply with the Statement of Policy and Guidelines for Using Aderans' Trademarks and Copyrights (the "Statement of Policy") which was provided to You and which may be modified or updated by AHG from time to time in its sole discretion.

**RETURN POLICY:** Returns will not be accepted unless pre-authorized by (AHG). Requests must be made within 30 days from receipt of goods. Upon approval and receipt of the authorization for return label, Goods meeting the following conditions may be returned for an exchange or direct credit to Your account (freight prepaid by Buyer). NO cash refunds! If an item is to be exchanged, new shipping and handling charges will be added.

1. A copy of Your invoice must accompany all returns. The authorization for return label must be placed on the outside of the box (complete with the authorization number) and Your return address. If not, the box will be refused.

2. Returned Goods must be in MINT CONDITION. Mint condition is defined by AHG as: no missing tags or labels, the hair net is not removed, item(s) are not combed/fluffed or tried on by a customer. All returns must be in original shipping box. There is a restocking fee of \$10.00 for EACH piece returned.

3. AHG has carefully designed its product packaging to protect the product integrity. AHG is not responsible for damage to or problems with any product where the product and/or shipment packaging has been changed per Your request. No returns will be accepted under these conditions.

4. Shipping and handling fees are non-refundable.

5. Any DISCONTINUED items are not returnable.

6. AHG is not responsible for lost return packages.

It is recommended that You keep proper Proof-of-Delivery. Goods not meeting the above stipulations will be refused. AHG will not accept returns more than 30 days after receipt of Goods. If there is a factory defect or an incorrectly shipped item due to our error, a full exchange or credit will be applied directly to Your account. Note: If an item is returned for a "defective" credit and upon examination found not to be defective, credit will only be given for the item's original price (providing it still meets the above standards), and a \$10.00 restocking charge will be applied. Any additional product not authorized for return will be sent back.

**NOTE:** Colors shown in this catalog may not reflect actual color of product.

RENÉ OF PARIS, NORIKO, and NORIKO COLLECTION are trademarks or registered trademarks of Aderans Hair Goods, Inc. and/or Aderans Co., Ltd. in the United States and other countries.



Distributed by

RENÉ of PARIS

division of Aderans Hair Goods, Inc.

9135 Independence Ave.  
Chatsworth, CA 91311 USA  
Toll Free: 800.353.7363  
Fax: 424.239.1451

Front Cover Style Shown: Alva in Honey Brown-R  
Back Cover Style Shown: Alva in Melted Marshmallow

[www.reneofparis.com](http://www.reneofparis.com)

FOLLOW US ON:



NORIKO CATALOG 2020/2021



2110452