



RENÉ<sup>of</sup>PARIS<sup>™</sup>  
HI-FASHION  
COLLECTION 2021



RENÉ<sup>of</sup>PARIS<sup>™</sup>  
HI-FASHION  
COLLECTION 2021

## MORE THAN JUST HAIR...

Introducing our new 2021 Rene of Paris hi-fashion styles Wyatt, Max, Shane, and Nolan along with our new colors: Watermelon-R, Melted Coconut, Snowy Sapphire-R. These styles will have you feeling a new type of confidence. Go from a long sleek look to a short chic wavy look in seconds. So feel free to switch it up! Confidence has more than one look.



**NEW!** WATERMELON-R  
Rich pastel pink base with subtle soft reddish tone + soft dark brown root.



**NEW!** MELTED COCONUT  
Dark rich brown root, soft golden medium brown at middle + warm white ends.



**NEW!** SNOWY SAPPHIRE-R  
Smoky toned soft black root + silver white base with a hint of soft blue.





NEW!

Max 2397

Page 8-9



NEW!

Shane

2398

Page 12-13

RENÉ of PARIS™

Available Colors 6-7  
New Styles . . . . . 8-15  
Wigs . . . . . 16-41  
Halos . . . . . 42-43  
Top Pieces . . . . 44-45  
Accessories . . . 46-47



NEW!

Nolan 2399

Page 10-11



NEW!

Wyatt

2396

Page 14-15



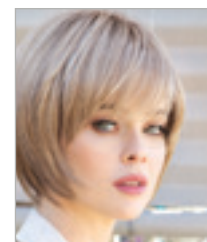
16 ADELINE  
2389



16 AMAL  
2371



17 ANASTASIA  
2388



18 AUDREY  
2350



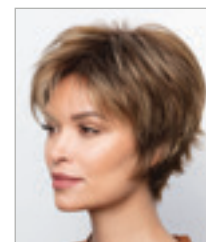
18 BAILEY  
2346



19 CAMERON  
2362



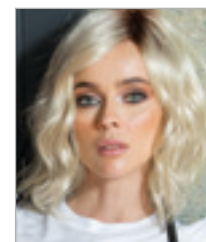
20 CHEYENNE  
2391



20 COCO  
2318



21 DAKOTA  
2387



22 EVANNA  
2378



23 FELICITY  
2353



24 GIA  
2359



24 INDIA  
2390



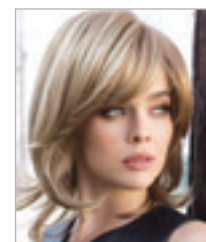
25 JADE  
2313



26 JOEY  
2325



27 KAI  
2383



28 KOURTNEY  
2367



28 LAINE  
2317



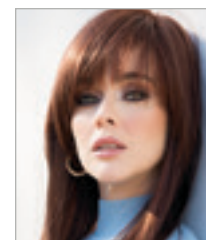
29 LAYLA  
2394



30 LENNOX  
2395



31 LIZZY  
2347



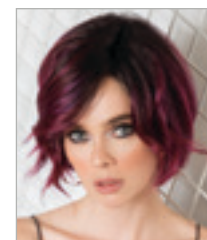
32 MISHA  
2363



33 NAKIA  
2393



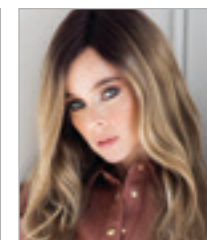
34 NICO  
2392



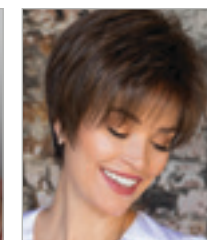
35 RAE  
2386



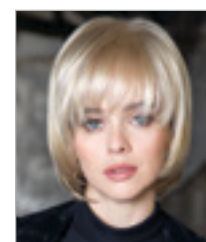
36 RINA  
2381



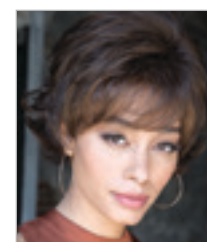
37 RYLEE  
2384



38 SAMY  
2340



38 SHANNON  
2342



39 SIERRA  
2328



39 TORI  
2356



40 TYLER  
2341



41 ZOE  
2349



42 LONG  
HALO 737



43 HALO BOB  
736



43 ROP HALO  
733



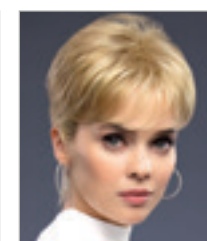
43 WAVY BOB  
HALO 738



44 LONG TP  
732



44 MEDIUM TP  
731



45 NEW  
ADDITION  
770



45 EVANNA TP  
771



45 MODERN  
TP 772



AVAILABLE COLORS



MELTED COLORS  
Melt into the new year with our dazzling gradient tones. Modern, natural salon-like finish. Now available in 4 contemporary colors including brand new Melted Coconut.

BRUNETTES



Black Espresso Cappucino Dark Chocolate Blueberry Burst Caramel Brown Chocolate Frost Mocha Brown Coffee Latte



Java Frost Ginger Brown Toasted Brown Medium Brown Iced Mocha Light Chocolate Almond Rocka Marble Brown Maple Sugar

HYBRANT BRUNETTES



Coffee Latte-R Chocolate Frost-R Marble Brown-R Iced Mocha-R Almond Rocka-R Maple Sugar-R Honey Brown-R Honey Wheat Mochaccino



Butter Pecan Harvest Gold Vanilla Bean Chai Cream Creamy Toffee Strawberry Swirl Frosti Blond Ice Blond Spring Honey/ Spring Honey-T



Vanilla Lush Caramel Cream Gold Blond Sugar Cane Creamy Blond Peach Gold Platinum Pearl

HYBRANT UNDERLIGHTS  
HYBRANT BLONDS



Honeycomb Brown Mochaccino-R Honey Wheat-R Spring Honey-R Creamy Toffee-R Rose Gold-R Sugar Cane-R Nutmeg-R/F Champagne-R

REDS



Burgundy Rosa Garnet Glaze Red Pepper Cayenne Spice Rusty Red Red Brown Auburn Sugar Chestnut Ginger Highlight

HYBRANT REDS



Razberry Ice Irish Spice Coconut Spice Copper Glaze Apricot Frost Plumberry Jam-R Razberry Ice-R Almond Spice-R Auburn Sugar-R

GRAYS



Midnite Pearl Sandy Silver™ Silver Stone™ 60

HYBRANT GRAYS



Smoky Gray-R Illumina-R Moonstone

PASTELS



Watermelon-R NEW! Pastel Pink

MELTED



Pastel Rainbow-R Pastel Blue-R NEW! Snowy Sapphire-R NEW! Melted Coconut Melted Sunset Melted Marshmallow Melted Ocean

LR BRUNETTES



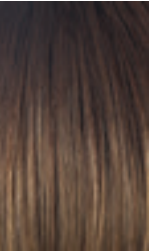
Macademia-LR Banana Split-LR Creamy Toffee-LR Marble Brown-LR Kandy Brown-LR

LR REDS



Milk Tea-LR Crimson-LR Plumberry Jam-LR

LR BLONDS



Mochaccino-LR

LR COLORS (LONG ROOTED) offer a dramatic ombré style root with a gradual lightening toward the ends.



NEW



## Max 2397

Soft wave, tapered short style. Customized volume with a contemporary twist.

Cap Construction:  
Lace front + part  
Fringe: 5.5" (14 cm)  
Crown: 5.5" (14 cm)  
Nape: 1.75" (4.4 cm)  
Weight: 2.4 oz (69 g)

**Colors Shown:**  
Snowy Sapphire-R (left) **NEW**  
Silver Stone™ (right)

**Available Colors:**  
**Brunettes:**  
Dark Chocolate  
Medium Brown

**Hybrant Brunettes:**  
Marble Brown-R

**Blonds:**  
Ice Blond

**Hybrant Blonds:**  
Spring Honey-R  
Rose Gold-R  
Creamy Toffee-R  
Mochaccino-R

**Melted:**  
Melted Marshmallow

**Pastels:**  
Watermelon-R **NEW**

**Grays:**  
Silver Stone™

**Hybrant Grays:**  
Snowy Sapphire-R **NEW**



NEW



## Nolan 2399

Silky smooth, salon finish straight. Pull off an instantly stunning appearance.

Cap Construction:  
Lace front + part  
Fringe: 9.8-11" (25-28 cm)  
Crown: 13" (33 cm)  
Nape: 13.8" (35 cm)  
Weight: 4.9-5.3 oz (140-150 g)

**Colors Shown:**  
Milk Tea-LR (left)  
Dark Chocolate (right)

**Available Colors:**  
**Brunettes:**  
Dark Chocolate  
Coffee Latte

**Hybrant Brunettes:**  
Marble Brown-R

**LR Brunettes:**  
Milk Tea-LR  
Kandy Brown-LR

**Blonds:**  
Spring Honey-T  
Creamy Blond  
Peach Gold

**Hybrant Blonds:**  
Rose Gold-R  
Mochaccino-R  
Nutmeg-R  
Champagne-R  
Creamy Toffee-R

**Reds:**  
Red Brown

**Hybrant Reds:**  
Auburn Sugar-R

**LR Reds:**  
Plumberry Jam-LR

**Hybrant Grays:**  
Moonstone

**Meltd:**  
Meltd Marshmallow  
Meltd Coconut **NEW**

**Pastels:**  
Watermelon-R **NEW**



NEW



## Shane 2398

Cheek length, A-line bob. Natural volume on crown achieves a pleasant silhouette.

Cap Construction:  
Lace front + part  
Fringe: 6.5" (16.5 cm)  
Crown: 5.5" (14 cm)  
Nape: 1" (2.5 cm)  
Weight: 2.6 oz (74 g)

**Colors Shown:**  
Watermelon-R (left) **NEW**  
Melted Marshmallow (right)

**Available Colors:**  
**Brunettes:**  
Dark Chocolate  
Ginger Brown  
Medium Brown

**Hybrant Brunettes:**  
Marble Brown-R

**LR Brunettes:**  
Milk Tea-LR

**Blonds:**  
Ice Blond

**Hybrant Blonds:**  
Spring Honey-R  
Rose Gold-R  
Mochaccino-R  
Creamy Toffee-R

**Melted:**  
Melted Marshmallow

**LR Reds:**  
Plumberry Jam-LR

**Pastels:**  
Pastel Rainbow-R  
Watermelon-R **NEW**

**Grays:**  
Silver Stone™



NEW



## Wyatt 2396

Chin length textured bob with a trendy, side swept fringe. This modern style creates natural volume and movement.

Cap Construction:  
Machine-made  
Fringe: 5" (12.7 cm)  
Crown: 9" (23 cm)  
Nape: 3" (7.6 cm)  
Weight: 3.0 oz (84 g)

Colors Shown:  
Watermelon-R (left) **NEW**  
Melted Coconut (right) **NEW**

Available Colors:  
**Brunettes:**  
Dark Chocolate  
Ginger Brown  
Medium Brown

**LR Brunettes:**  
Marble Brown-LR  
Milk Tea-LR

**Blonds:**  
Ice Blond

**Hybrant Blonds:**  
Spring Honey-R  
Rose Gold-R

**LR Blonds:**  
Creamy Toffee-LR  
Mochaccino-LR

**Melted:**  
Melted Marshmallow  
Melted Coconut **NEW**

**LR Reds:**  
Plumberry Jam-LR

**Pastels:**  
Pastel Rainbow-R  
Watermelon-R **NEW**

**Grays:**  
Silver Stone™

**Hybrant Grays:**  
Snowy Sapphire-R **NEW**





# Adeline 2389

Short, flirty bob with side swept fringe and tousled waves. Featuring a lace front with lace part cap.

- Cap Construction:  
Lace front + lace part  
Fringe: 7.5" (19.05 cm)  
Crown: 11" (27.94cm)  
Nape: 4" (10.16 cm)  
Weight: 3.17 oz (90g)

**Colors Shown:**  
Marble Brown-LR (main)  
Ice Blond (inset)

**Available Colors:**

**Brunettes:**  
Dark Chocolate  
Caramel Brown  
Mocha Brown  
Ginger Brown
- Hybrant Brunettes:**  
Honey Brown-R

**LR Brunettes:**  
Marble Brown-LR

**Blonds:**  
Ice Blond

**Hybrant Blonds:**  
Spring Honey-LR  
Rose Gold-R

**LR Blonds:**  
Creamy Toffee-LR  
Mochaccino-LR

**Hybrant Underlights:**  
Honeycomb Brown
- Reds:**  
Rusty Red

**LR Reds:**  
Plumerry Jam-LR

**Melted Tones:**  
Melted Sunset  
Melted Marshmallow  
Melted Ocean

**Pastels:**  
Pastel Blue-R  
Pastel Pink

**Grays:**  
Silver Stone™

**Hybrant Grays:**  
Smoky Gray-R



# Amal 2371

Shaggy bob with loose romantic curls and softly layered fringe.

- Cap Construction:  
Machine-made  
Fringe: 7.5" (19 cm)  
Crown: 10.3" (26 cm)  
Nape: 4.2" (10.5 cm)  
Weight: 3.6 oz (103 g)

**Color Shown:**  
Coffee Latte

**Available Colors:**

**Brunettes:**  
Cappucino  
Coffee Latte  
Ginger Brown
- Blonds:**  
Spring Honey  
Creamy Blond

**Hybrant Blonds:**  
Creamy Toffee-R

**LR Blonds:**  
Macadamia-LR

**Reds:**  
Chestnut

**Grays:**  
Silver Stone™



# Anastasia 2388

Short, jazzy bob with side swept fringe and textured layers.

- Cap Construction:  
Machine-made  
Fringe: 4.5" (11.43 cm)  
Crown: 5.5 (13.97 cm)  
Nape: 3" (7.62 cm)  
Weight: 2.68 oz (76g)

**Colors Shown:**  
Pastel Pink (main)  
Caramel Brown (inset)

**Available Colors:**

**Brunettes:**  
Dark Chocolate  
Caramel Brown  
Mocha Brown  
Ginger Brown
- Hybrant Brunettes:**  
Honey Brown-R  
Marble Brown-R

**Blonds:**  
Ice Blond

**Hybrant Blonds:**  
Mochaccino-R  
Spring Honey-R  
Creamy Toffee-R  
Rose Gold-R

**Reds:**  
Rusty Red

**Hybrant Reds:**  
Plumerry Jam-R
- Melted Tones:**  
Melted Sunset  
Melted Marshmallow  
Melted Ocean

**Pastels:**  
Pastel Blue-R  
Pastel Pink

**Grays:**  
Silver Stone™

**Hybrant Grays:**  
Smoky Gray-R





# Audrey 2350

Smooth layered bob with angled sides.

- Cap Construction:**  
Machine-made  
Fringe: 4.75" (12 cm)  
Crown: 6" (15 cm)  
Nape: 2.25" (6 cm)  
Weight: 2.93 oz (83 g)

**Color Shown:**  
Nutmeg-R

**Available Colors:**  
**Brunettes:**  
Espresso  
Cappuccino  
Dark Chocolate  
Coffee Latte
- Ginger Brown  
Marble Brown  
Iced Mocha  
Chocolate Frost  
Toasted Brown  
Maple Sugar

**Hybrant Brunettes:**  
Iced Mocha-R  
Maple Sugar-R

**Blonds:**  
Mochaccino  
Vanilla Bean  
Spring Honey  
Creamy Toffee  
Creamy Blond
- Hybrant Blonds:**  
Mochaccino-R  
Nutmeg-R  
Creamy Toffee-R

**Reds:**  
Ginger Highlight  
Auburn Sugar  
Chestnut  
Copper Glaze

**Grays:**  
Sandy Silver™  
Silver Stone™



# Bailey 2346

Easy flowing layers define this trendy look.

- Cap Construction:**  
Machine-made  
Fringe: 3.5" (9 cm)  
Crown: 6.5" (16.5 cm)  
Nape: 6.5" (16.5 cm)  
Weight: 3.49 oz (99 g)

**Color Shown:**  
Mochaccino-R

**Available Colors:**  
**Brunettes:**  
Cappuccino  
Dark Chocolate  
Coffee Latte  
Ginger Brown  
Marble Brown
- Iced Mocha  
Toasted Brown  
Maple Sugar

**Hybrant Brunettes:**  
Iced Mocha-R  
Maple Sugar-R

**Blonds:**  
Butter Pecan  
Mochaccino  
Strawberry Swirl  
Vanilla Lush  
Spring Honey  
Creamy Toffee  
Creamy Blond
- Hybrant Blonds:**  
Mochaccino-R  
Nutmeg-R  
Creamy Toffee-R

**Reds:**  
Ginger Highlight  
Red Pepper  
Auburn Sugar  
Chestnut  
Irish Spice  
Copper Glaze  
Apricot Frost

**Hybrant Reds:**  
Auburn Sugar-R



# Cameron 2362

Casual movement characterizes this irresistible bob.

- Cap Construction:**  
Machine-made  
Fringe: 5" (13 cm)  
Crown: 6.5" (16.5 cm)  
Nape: 4" (10 cm)  
Weight: 3.21 oz (91 g)
- Color Shown:**  
Creamy Toffee
- Available Colors:**  
**Brunettes:**  
Espresso  
Cappuccino  
Dark Chocolate  
Coffee Latte  
Java Frost  
Almond Rocka  
Ginger Brown  
Marble Brown  
Iced Mocha  
Chocolate Frost  
Toasted Brown  
Maple Sugar
- Hybrant Brunettes:**  
Iced Mocha-R  
Maple Sugar-R

- Blonds:**  
Mochaccino  
Honey Wheat  
Chai Cream  
Spring Honey  
Sugar Cane  
Creamy Toffee  
Creamy Blond
- Hybrant Blonds:**  
Mochaccino-R  
Nutmeg-R  
Creamy Toffee-R
- Reds:**  
Cayenne Spice  
Auburn Sugar  
Raspberry Ice  
Chestnut  
Copper Glaze  
Coconut Spice
- Hybrant Reds:**  
Auburn Sugar-R





## Cheyenne 2391

Sleek shoulder length blunt cut bob.  
Featuring a lace front with lace part cap.

**Cap Construction:**  
Lace front + lace part  
Fringe: 13" (33.02cm)  
Crown: 14" (35.56)  
Nape: 5" (12.7cm)  
Weight: 4.76 oz (135g)

**Colors Shown:**  
Honeycomb Brown (main)  
Melted Marshmallow (inset)

**Available Colors:**  
**Brunettes:**  
Dark Chocolate  
Caramel Brown  
Mocha Brown  
Ginger Brown

**Hybrant Brunettes:**  
Honey Brown-R  
**LR Brunettes:**  
Marble Brown-LR

**Blonds:**  
Ice Blond

**Hybrant Blonds:**  
Spring Honey-R  
Rose Gold-R

**LR Blonds:**  
Mochaccino-LR  
Creamy Toffee-LR

**Hybrant Underlights:**  
Honeycomb Brown

**Reds:**  
Rusty Red

**LR Reds:**  
Plumberry Jam-LR

**Melted Tones:**  
Melted Sunset  
Melted Marshmallow  
Melted Ocean

**Pastels:**  
Pastel Blue-R  
Pastel Pink  
Pastel Rainbow-R

**Grays:**  
Silver Stone™

**Hybrant Grays:**  
Smoky Gray-R



## Coco 2318

A carefree style with  
charming texture.

**Cap Construction:**  
Machine-made  
Fringe: 4" (10 cm)  
Crown: 5" (12.5 cm)  
Nape: 2" (5 cm)  
Weight: 2.58 oz (73 g)

**Color Shown:**  
Iced Mocha-R

**Available Colors:**  
**Brunettes:**  
Dark Chocolate  
Coffee Latte  
Ginger Brown  
Marble Brown  
Iced Mocha  
Maple Sugar

**Hybrant Brunettes:**  
Iced Mocha-R  
Maple Sugar-R

**Blonds:**  
Harvest Gold  
Mochaccino  
Frosti Blond  
Vanilla Lush  
Caramel Cream  
Spring Honey  
Creamy Toffee  
Creamy Blond

**Hybrant Blonds:**  
Mochaccino-R  
Nutmeg-R  
Creamy Toffee-R

**Reds:**  
Auburn Sugar  
Chestnut  
Copper Glaze

**Hybrant Reds:**  
Auburn Sugar-R

**Grays:**  
Silver Stone™



## Dakota 2387

Sleek medium length  
style with razored  
layers that frame the  
face and a long side  
swept fringe.

**Cap Construction:**  
Lace front + lace part  
Fringe: 8" (20.3 cm)  
Crown: 14" (35.6 cm)  
Nape: 11" (28 cm)  
Weight: 4.03 oz (114 g)

**Color Shown:**  
Pastel Pink

**Available Colors:**  
**Brunettes:**  
Mocha Brown  
Ginger Brown

**Hybrant Underlight:**  
Honeycomb Brown

**LR Brunettes:**  
Marble Brown-LR

**Blonds:**  
Ice Blond

**Hybrant Blonds:**  
Rose Gold-R  
Spring Honey-R

**LR Blonds:**  
Mochaccino-LR  
Creamy Toffee-LR

**LR Reds:**  
Crimson-LR  
Plumberry Jam-LR

**Melted Tones:**  
Melted Marshmallow

**Pastels:**  
Pastel Blue-R  
Pastel Pink





# Evanna 2378

Salon finish beach wave curls fall shoulder length in this trendy bob.

Cap Construction:  
Lace front + monpart  
Fringe: 11.5" (29.2 cm)  
Crown: 11.5" (29.2 cm)  
Nape: 5.5" (14 cm)  
Weight: 3.56 oz (101 g)

**Color Shown:**  
Champagne-R (main) **NEW**  
Melted Sunset (inset)

**Available Colors:**  
**Brunettes:**  
Mocha Brown  
Ginger Brown  
Caramel Brown  
Dark Chocolate

**LR Brunettes:**  
Marble Brown-LR

**Hybrant Under Lights:**  
Honeycomb Brown

**Blonds:**  
Ice Blond

**Hybrant Blonds:**  
Rose Gold-R  
Champagne-R **NEW**

**LR Blonds:**  
Mochaccino-LR  
Creamy Toffee-LR

**Reds:**  
Rusty Red

**LR Reds:**  
Crimson-LR  
Plumberry Jam-LR

**Melted Tones:**  
Melted Sunset  
Melted Marshmallow  
Melted Ocean

**Pastels:**  
Pastel Blue-R  
Pastel Pink  
Pastel Rainbow-R



# Felicity 2353

A luxurious look with layered soft waves.

Cap Construction:  
Machine-made  
Fringe: 5.25" (13.5 cm)  
Crown: 10" (25.5 cm)  
Nape: 14" (35.25 cm)  
Weight: 4.48 oz (127 g)

**Color Shown:**  
Auburn Sugar

**Available Colors:**  
**Brunettes:**  
Espresso  
Cappucino  
Dark Chocolate  
Coffee Latte  
Ginger Brown  
Marble Brown  
Iced Mocha  
Toasted Brown  
Maple Sugar

**Blonds:**  
Mochaccino  
Vanilla Lush  
Spring Honey  
Creamy Toffee

**Reds:**  
Ginger Highlight  
Auburn Sugar  
Chestnut  
Copper Glaze  
Irish Spice







# Gia 2359

A chic tapered look with effortless elegance.

- Cap Construction:**  
Machine-made  
Fringe: 6" (15 cm)  
Crown: 3.25" (8.5 cm)  
Nape: 2" (5 cm)  
Weight: 2.26 oz (64 g)

**Color Shown:**  
Champagne-R

**Available Colors:**  
**Brunettes:**  
Dark Chocolate  
Coffee Latte  
Chocolate Frost  
Java Frost  
Almond Rocka  
Ginger Brown  
Marble Brown
- Iced Mocha**  
Maple Sugar

**Hybrant Brunettes:**  
Marble Brown-R  
Maple Sugar-R

**Blonds:**  
Mochaccino  
Honey Wheat  
Chai Cream  
Spring Honey  
Sugar Cane  
Creamy Toffee  
Creamy Blond

**Hybrant Blonds:**  
Champagne-R  
Mochaccino-R  
Creamy Toffee-R
- Reds:**  
Cayenne Spice  
Auburn Sugar  
Razberry Ice  
Chestnut  
Copper Glaze  
Coconut Spice

**Grays:**  
Sandy Silver™  
Silver Stone™

**Pastels:**  
Pastel Pink  
Pastel Blue-R



# India 2390

Add volume with this beautiful shoulder length style with side swept fringe and loose wavy layers.

- Cap Construction:**  
Lace front + lace part  
Fringe: 10" (25.4cm)  
Crown: 10" (25.4cm)  
Nape: 9" (22.86cm)  
Weight: 3.77 (107g)

**Color Shown:**  
Smoky Gray-R (main)  
Honey Brown-R (inset)

**Available Colors:**  
**Brunettes:**  
Dark Chocolate  
Caramel Brown  
Mocha Brown  
Ginger Brown
- Hybrant Brunettes:**  
Honey Brown-R

**LR Brunettes:**  
Marble Brown-LR

**Blonds:**  
Ice Blond

**Hybrant Blonds:**  
Spring Honey-R  
Rose Gold-R

**LR Blonds:**  
Creamy Toffee-LR  
Mochaccino-LR

**Reds:**  
Rusty Red
- LR Reds:**  
Plumberry Jam-LR

**Grays:**  
Silver Stone™

**Hybrant Grays:**  
Smoky Gray-R

**Hybrant Underlights:**  
Honeycomb Brown

**Melted Tones:**  
Melted Sunset  
Melted Marshmallow  
Melted Ocean

**Pastels:**  
Pastel Pink  
Pastel Blue-R



# Jade 2313

Feathery layers lend a "retro" finish to a classic shoulder length cut.

- Cap Construction:**  
Machine-made  
Fringe: 5.5" (14 cm)  
Crown: 8" (20.5 cm)  
Nape: 9" (23 cm)  
Weight: 3.99 oz (113 g)

**Color Shown:**  
Iced Mocha
- Brunettes:**  
Espresso  
Dark Chocolate  
Coffee Latte  
Ginger Brown  
Marble Brown  
Iced Mocha  
Maple Sugar

**Blonds:**  
Harvest Gold  
Mochaccino  
Vanilla Lush  
Vanilla Bean  
Spring Honey  
Creamy Toffee  
Creamy Blond





Joey 2325

A free-spirited mix of textured curls that can be tamed or tousled.

Cap Construction:  
Open Top Aero-Light Cap  
Fringe: 3.75" (9.5 cm)  
Crown: 4" (10 cm)  
Nape: 3.25" (8 cm)  
Weight: 2 oz (56 g)  
**Color Shown:**  
Strawberry Swirl

**Available Colors:**  
**Brunettes:**  
Dark Chocolate  
Ginger Brown  
Marble Brown  
Toasted Brown  
Maple Sugar

**Blonds:**  
Harvest Gold  
Frosti Blond  
Strawberry Swirl  
Spring Honey  
Creamy Toffee  
**Grays:**  
Sandy Silver™  
Silver Stone™

Aero-Light  
Cap



Kai 2383

Sharp, blunt cut bob for sleek sophistication.

Cap Construction:  
Lace front + lace part  
Fringe: 11" (28 cm)  
Crown: 12" (30.5 cm)  
Nape: 2.25" (5.7 cm)  
Weight: 3.53 oz (100 g)  
**Colors Shown:**  
Nutmeg-R (main) **NEW**  
Melted Ocean (inset)  
**Available Colors:**  
**Brunettes:**  
Mocha Brown  
Ginger Brown  
Caramel Brown  
Dark Chocolate

**Hybrant Underlight:**  
Honeycomb Brown  
**LR Brunettes:**  
Marble Brown-LR  
**Blonds:**  
Ice Blond  
**Hybrant Blonds:**  
Rose Gold-R  
Spring Honey-R  
Nutmeg-R **NEW**  
**LR Blonds:**  
Mochaccino-LR  
Creamy Toffee-LR

**LR Reds:**  
Crimson-LR  
Plumberry Jam-LR  
**Melted Tones:**  
Melted Sunset  
Melted Marshmallow  
Melted Ocean  
**Pastels:**  
Pastel Blue-R  
Pastel Pink  
**Grays:**  
Silver Stone™







## Kourtney 2367

Bouncy layers enhance femininity and style versatility.

**Cap Construction:**  
Machine-made  
Fringe: 5.25" (13.5 cm)  
Crown: 9" (23 cm)  
Nape: 7.75" (19.5 cm)  
Weight: 3.4 oz (97 g)

**Color Shown:**  
Spring Honey

**Available Colors:**  
**Brunettes:**  
Cappuccino  
Dark Chocolate  
Coffee Latte  
Java Frost  
Ginger Brown  
Marble Brown  
Toasted Brown

**Blonds:**  
Mochaccino  
Honey Wheat  
Spring Honey  
Sugar Cane  
Creamy Toffee  
Creamy Blond

**Reds:**  
Auburn Sugar  
Chestnut



## Laine 2317

Soft layers with razored edges flatters this classic design.

**Cap Construction:**  
Machine-made  
Fringe: 9" (23 cm)  
Crown: 14" (35.5 cm)  
Nape: 9" (23 cm)  
Weight: 4.83 oz (137 g)

**Color Shown:**  
Almond Spice-R

**Available Colors:**  
**Brunettes:**  
Espresso  
Cappuccino  
Coffee Latte  
Ginger Brown  
Marble Brown  
Maple Sugar

**Hybrant Brunettes:**  
Iced Mocha-R

**Blonds:**  
Mochaccino  
Spring Honey  
Creamy Toffee  
Creamy Blond

**Hybrant Blonds:**  
Honey Wheat-R  
Creamy Toffee-R

**Reds:**  
Chestnut

**Hybrant Reds:**  
Almond Spice-R



## Layla 2394

Complete your look with this gorgeous and dimensional beach wave style.

**Cap Construction:**  
Lace front + lace part  
Fringe: 15.5" (39.4 cm)  
Crown: 17.5" (44.5 cm)  
Nape: 13" (33 cm)  
Weight: 5.33 oz (151 g)

**Colors Shown:**  
Rose Gold-R (main)  
Pastel Blue-R (inset)

**Available Colors:**  
**Brunettes:**  
Caramel Brown  
Dark Chocolate  
Ginger Brown  
Mocha Brown

**Hybrant Brunettes:**  
Honey Brown-R

**LR Brunettes:**  
Marble Brown-LR  
Milk Tea-LR

**Hybrant Underlights:**  
Honeycomb Brown

**Blonds:**  
Ice Blond

**Hybrant Blonds:**  
Spring Honey-R  
Rose Gold-R

**LR Blonds:**  
Creamy Toffee-LR  
Mochaccino-LR

**Melted:**  
Melted Marshmallow  
Melted Sunset

**Reds:**  
Rusty Red

**LR Reds:**  
Plumberry Jam-LR

**Pastels:**  
Pastel Blue-R  
Pastel Pink  
Pastel Rainbow-R

**Hybrant Grays:**  
Smoky Gray-R





## Lennox 2395

Create a trendy look with this timeless, long layered style with natural feathered ends.

**Cap Construction:**  
Lace front + lace part  
Fringe: 13" (33cm)  
Crown: 18" (45.7 cm)  
Nape: 16.5" (42 g)  
Weight: 6.38 oz (181 g)

**Colors Shown:**  
Pastel Rainbow-R (main)  
Marble Brown-LR (inset)

**Available Colors:**  
**Brunettes:**  
Caramel Brown  
Dark Chocolate  
Ginger Brown  
Mocha Brown

**Hybrant Brunettes:**  
Honey Brown-R  
**LR Brunettes:**  
Marble Brown-LR  
Milk Tea-LR

**Hybrant Underlights:**  
Honeycomb Brown

**Blonds:**  
Ice Blond

**Hybrant Blonds:**  
Spring Honey-R  
Rose Gold-R

**LR Blonds:**  
Creamy Toffee-LR  
Mochaccino-LR

**Reds:**  
Rusty Red

**LR Reds:**  
Plumberry Jam-LR

**Melted:**  
Melted Marshmallow  
Melted Sunset

**Pastels:**  
Pastel Blue-R  
Pastel Pink  
Pastel Rainbow-R

**Hybrant Grays:**  
Smoky Gray-R



## Lizzy 2347

Short and saucy with razor finished layers. Just spike it up and go!

**Cap Construction:**  
Machine-made  
Fringe: 3.5" (9 cm)  
Crown: 3.5" (9 cm)  
Nape: 2" (5 cm)  
Weight: 2.01 oz (57 g)

**Color Shown:**  
Maple Sugar

**Available Colors:**

**Brunettes:**  
Espresso  
Coffee Latte  
Ginger Brown  
Marble Brown  
Iced Mocha  
Toasted Brown  
Maple Sugar

**Hybrant Brunettes:**  
Iced Mocha-R  
Maple Sugar-R

**Blonds:**  
Harvest Gold  
Mochaccino  
Strawberry Swirl  
Vanilla Lush  
Vanilla Bean  
Spring Honey  
Creamy Blond

**Hybrant Blonds:**  
Mochaccino-R  
Nutmeg-R  
Creamy Toffee-R

**Reds:**  
Burgundy Rosa  
Ginger Highlight  
Auburn Sugar  
Razberry Ice  
Chestnut  
Copper Glaze

**Grays:**  
Silver Stone™





## Misha 2363

Long tresses with fringe are both timeless and flattering.

Cap Construction:  
Machine-made  
Fringe: 4.25" (11 cm)  
Crown: 9.75" (25 cm)  
Nape: 11.5" (29.5 cm)  
Weight: 5.11 oz (145 g)

**Color Shown:**  
Chestnut

**Available Colors:**  
**Brunettes:**  
Espresso  
Cappuccino  
Dark Chocolate  
Coffee Latte  
Java Frost  
Almond Rocka  
Ginger Brown  
Maple Sugar

**Blonds:**  
Mochaccino  
Chai Cream  
Spring Honey  
Creamy Toffee  
Creamy Blond  
**Reds:**  
Garnet Glaze  
Chestnut  
Coconut Spice



## Nakia 2393

Natural soft waves which soften face lines and are flattering for everyone.

Cap Construction:  
Machine-made  
Fringe: 4.5" (11.4cm)  
Crown: 13" (33 cm)  
Nape: 10" (25.4 cm)  
Weight: 4.16 oz (118 g)

**Colors Shown:**  
Milk Tea-LR (main)  
Dark Chocolate (inset)

**Available Colors:**  
**Brunettes:**  
Caramel Brown  
Dark Chocolate  
Ginger Brown  
Mocha Brown

**Hybrant Brunettes:**  
Honey Brown-R

**LR Brunettes:**  
Marble Brown-LR  
Milk Tea-LR

**Hybrant Underlights:**  
Honeycomb Brown

**Blonds:**  
Ice Blond

**Hybrant Blonds:**  
Spring Honey-R  
Rose Gold-R

**LR Blonds:**  
Creamy Toffee-LR  
Mochaccino-LR

**Reds:**  
Rusty Red

**LR Reds:**  
Plumberry Jam-LR

**Melted:**  
Melted Marshmallow  
Melted Sunset

**Pastels:**  
Pastel Blue-R  
Pastel Pink  
Pastel Rainbow-R

**Hybrant Grays:**  
Smoky Gray-R







# Nico 2392

A sleek and effortless chin-length bob style for all face shapes

Cap Construction:  
Machine-made  
Fringe: 3.25" (8.26cm)  
Crown: 11" (28 cm)  
Nape: 2" (5.1 cm)  
Weight: 3.53 oz (100 g)

**Colors Shown:**  
Pastel Rainbow-R (main)  
Smoky Gray-R (inset)

**Available Colors:**  
**Brunettes:**  
Caramel Brown  
Dark Chocolate  
Ginger Brown  
Mocha Brown

**Hybrant Brunettes:**  
Honey Brown-R  
Marble Brown-R

**LR Brunettes:**  
Milk Tea-LR

**Hybrant Underlights:**  
Honeycomb Brown

**Blonds:**  
Ice Blond

**Hybrant Blonds:**  
Spring Honey-R  
Rose Gold-R  
Creamy Toffee-R  
Mochaccino-R

**Melted:**  
Melted Marshmallow  
Melted Sunset

**Reds:**  
Rusty Red

**LR Reds:**  
Plumberry Jam-LR

**Pastels:**  
Pastel Blue-R  
Pastel Pink  
Pastel Rainbow-R

**Grays:**  
Silver Stone™

**Hybrant Grays:**  
Smoky Gray-R



# Rae 2386

Sexy a-line cut with tapered nape and loose wavy layers that frame the face to the chin.

Cap Construction:  
Lace front + lace part  
Fringe: 8.5" (21.6 cm)  
Crown: 7.5" (19.05 cm)  
Nape: 3" (7.62 cm)  
Weight: 2.93 oz (83 g)

**Colors Shown:**  
Plumberry Jam-LR

**Available Colors:**  
**Brunettes:**  
Mocha Brown  
Ginger Brown

**Hybrant Underlight:**  
Honeycomb Brown

**LR Brunettes:**  
Marble Brown-LR

**Blonds:**  
Ice Blond

**Hybrant Blonds:**  
Rose Gold-R  
Spring Honey-R

**LR Blonds:**  
Mochaccino-LR  
Creamy Toffee-LR

**LR Reds:**  
Plumberry Jam-LR

**Melted Tones:**  
Melted Marshmallow

**Pastels:**  
Pastel Blue-R  
Pastel Pink  
Pastel Rainbow-R

**Grays:**  
Silver Stone™





# Rina 2381

Feathery layers with graduated back and soft wispy fringe.

Cap Construction:  
Machine-made  
Fringe: 4" (10.2 cm)  
Crown: 4" (10.2 cm)  
Nape: 2" (5.1 cm)  
Weight: 2.19 oz (62 g)  
  
**Color Shown:**  
Rose Gold-R

**Available Colors:**  
**Brunettes:**  
Mocha Brown  
Ginger Brown  
Caramel Brown  
  
**Blonds:**  
Ice Blond

**Hybrant Blonds:**  
Mochaccino-R  
Creamy Toffee-R  
Rose Gold-R  
  
**Reds:**  
Rusty Red  
  
**Grays:**  
Silver Stone™



# Rylee 2384

Lusciously long, wavy locks fall alluringly towards the waist while long layers add beautiful dimension and movement to this stunningly sexy style.

Cap Construction:  
Lace front + lace part  
Fringe: 14" (35.6 cm)  
Crown: 16" (40.6cm)  
Nape: 20" (50.8 cm)  
Weight: 5.23 oz (148 g)

**Colors Shown:**  
Mochaccino-LR

**Available Colors:**  
**Brunettes:**  
Mocha Brown  
Ginger Brown

**Hybrant Undertlight:**  
Honeycomb Brown

**LR Brunettes:**  
Marble Brown-LR

**Blonds:**  
Ice Blond

**Hybrant Blonds:**  
Rose Gold-R

**LR Blonds:**  
Mochaccino-LR  
Creamy Toffee-LR

**LR Reds:**  
Plumberry Jam-LR

**Melted Tones:**  
Melted Marshmallow

**Pastels:**  
Pastel Pink  
Pastel Rainbow-R



# Samy 2340

A spiky, short cut with tapered nape and sides.

- Cap Construction:  
Machine-made  
Fringe: 4" (10 cm)  
Crown: 4" (10 cm)  
Nape: 2" (5 cm)  
Weight: 2.15 oz (61 g)

**Color Shown:**  
Ginger Brown
- Available Colors:**  
**Brunettes:**  
Dark Chocolate  
Coffee Latte  
Ginger Brown  
Marble Brown  
Iced Mocha  
Toasted Brown  
Maple Sugar

**Blonds:**  
Frosti Blond  
Mochaccino  
Vanilla Bean  
Spring Honey  
Creamy Toffee

**Reds:**  
Copper Glaze

**Grays:**  
Sandy Silver™  
Silver Stone™  
60



# Shannon 2342

A structured chin length bob with tapered ends.

- Cap Construction:  
Machine-made  
Fringe: 4.5" (11.5 cm)  
Crown: 7.5" (19 cm)  
Nape: 4" (10 cm)  
Weight: 3.17 oz (90 g)

**Color Shown:**  
Creamy Blond
- Available Colors:**  
**Brunettes:**  
Espresso  
Cappuccino  
Dark Chocolate  
Coffee Latte  
Ginger Brown  
Marble Brown  
Medium Brown  
Toasted Brown  
Maple Sugar  
Light Chocolate

**Blonds:**  
Mochaccino  
Strawberry Swirl  
Spring Honey  
Creamy Toffee  
Creamy Blond

**Reds:**  
Ginger Highlight  
Razberry Ice



# Sierra 2328

A buoyant arrangement of tousled texture and body.

- Cap Construction:  
Open Top Aero-Light Cap  
Fringe: 5" (12.5 cm)  
Crown: 3.5" (9 cm)  
Nape: 3.5" (9 cm)  
Weight: 2.22 oz (63 g)

**Color Shown:**  
Toasted Brown
- Available Colors:**  
**Brunettes:**  
Dark Chocolate  
Coffee Latte  
Ginger Brown  
Marble Brown  
Iced Mocha  
Toasted Brown

**Blonds:**  
Harvest Gold  
Mochaccino  
Frosti Blond  
Strawberry Swirl  
Spring Honey  
Creamy Toffee

**Reds:**  
Auburn Sugar  
Chestnut
- Aero-Light Cap**



# Tori 2356

A striking angled bob with blunt fringe.

- Cap Construction:  
Machine-made  
Fringe: 4" (10 cm)  
Crown: 7" (17.5 cm)  
Nape: 2" (5 cm)  
Weight: 3 oz (85 g)

**Color Shown:**  
Razberry Ice
- Available Colors:**  
**Brunettes:**  
Black  
Espresso  
Cappuccino  
Dark Chocolate  
Coffee Latte  
Ginger Brown

**Blonds:**  
Butter Pecan  
Mochaccino  
Strawberry Swirl  
Vanilla Lush  
Spring Honey  
Creamy Toffee  
Creamy Blond

**Hybrant Brunettes:**  
Iced Mocha-R  
Maple Sugar-R

**Hybrant Blonds:**  
Mochaccino-R  
Nutmeg-R  
Creamy Toffee-R

**Reds:**  
Ginger Highlight  
Auburn Sugar  
Razberry Ice  
Chestnut  
Irish Spice  
Copper Glaze

**Hybrant Reds:**  
Auburn Sugar-R



# Tyler

2341

Tapered layers and flipped ends combine to create a sophisticated style.

Cap Construction:  
Open Top Aero-Light Cap  
Fringe: 3.5" (9 cm)  
Crown: 3.5" (9 cm)  
Nape: 2.25" (5.5 cm)  
Weight: 2.01 oz (57 g)

**Color Shown:**  
Coffee Latte

**Available Colors:**

**Brunettes:**  
Dark Chocolate  
Coffee Latte  
Ginger Brown  
Marble Brown  
Iced Mocha  
Maple Sugar

**Blonds:**  
Harvest Gold  
Mochaccino  
Strawberry Swirl  
Spring Honey  
Creamy Toffee  
Creamy Blond

**Reds:**  
Ginger Highlight  
Auburn Sugar  
Copper Glaze

**Grays:**  
Silver Stone™  
60

*Aero-Light  
Cap*



# Zoe 2349

A modern pixie enhanced by multiple layers and textures.

Cap Construction:  
Machine-made  
Fringe: 3.5" (9 cm)  
Crown: 3.25" (8.5 cm)  
Nape: 2" (5 cm)  
Weight: 1.8 oz (51 g)

**Color Shown:**  
Midnite Pearl

**Available Colors:**

**Brunettes:**  
Dark Chocolate  
Coffee Latte  
Ginger Brown  
Marble Brown  
Iced Mocha  
Toasted Brown  
Maple Sugar

**Blonds:**  
Harvest Gold  
Mochaccino  
Strawberry Swirl  
Spring Honey  
Creamy Blond

**Reds:**  
Ginger Highlight  
Auburn Sugar  
Copper Glaze

**Grays:**  
Midnight Pearl  
Sandy Silver™  
Silver Stone™  
60



## HALO COLLECTION

Comfy, light and stylish  
Halos were designed to  
be worn under a hat, scarf  
or wrap. A detachable  
fringe gives you a choice  
to change up your look to  
complement any outfit.  
A great alternative to  
a full wig.

### Long Halo 737

Our popular long style is  
now available in Halo! Use  
it as a regular Halo or as an  
alternative way to change  
your look for a day.

Overall: 16.1" (41 cm)  
Weight: 3.7 oz (104 g)

\*Detachable bangs  
\*Turban not included

**Color Shown:**  
Dark Chocolate

**Turban shown:**  
1011-0255 Mantra  
Long Scarf

**Available Colors:**  
**Brunettes:**  
Cappucino  
Dark Chocolate

Ginger Brown  
Maple Sugar  
Marble Brown  
Toasted Brown  
Honey Brown

**Hybrant Brunettes:**  
Marble Brown-R

**Blonds:**  
Creamy Blond  
Creamy Toffee  
Mochaccino  
Spring Honey



Circumference: 53.5 cm



### Halo Bob 736

A refreshingly original halo hair piece complete  
with chin length layers and a detachable fringe.

Overall: 10" (24.4 cm)  
Weight: 2.9 oz (82 g)  
\*Detachable Bangs  
\*Hat Not Included

**Color Shown:**  
Creamy Blond

**Available Colors:**  
**Brunettes:**  
Cappucino  
Dark Chocolate  
Coffee Latte  
Ginger Brown

Marble Brown  
Toasted Brown  
Maple Sugar

**Blonds:**  
Mochaccino  
Spring Honey  
Creamy Toffee  
Creamy Blond

**Reds:**  
Coconut Spice



Circumference: 53.5 cm



### ROP Halo 733

A comfy and stylish Halo with detachable  
fringe. Can be worn under a hat or scarf to  
complement any outfit!

Overall: 14" (35.5 cm)  
Weight: 2.9 oz (82 g)

\*Detachable bangs  
\*Turban not included

**Color Shown:**  
Toasted Brown

**Available Colors:**  
**Brunettes:**  
Cappucino  
Dark Chocolate  
Ginger Brown  
Marble Brown  
Toasted Brown  
Maple Sugar

**Blonds:**  
Mochaccino  
Spring Honey  
Creamy Toffee



Circumference: 53.5 cm



### Wavy Bob Halo 738

This soft wave bob compliments your  
face and neck line with a stylish look.

Overall: 10" (3.9 cm)  
Weight: 2.5 oz (72 g)

\*Detachable bangs  
\*Hat not included

**Color Shown:**  
Honey Brown

**Turban shown (inset):**  
2102-0335 Lotus Turban - Printed

**Available Colors:**  
**Brunettes:**  
Cappucino  
Dark Chocolate  
Ginger Brown  
Maple Sugar  
Marble Brown  
Toasted Brown

**Hybrant Brunettes:**  
Honey Brown

**Blonds:**  
Creamy Blond  
Creamy Toffee  
Mochaccino  
Spring Honey



Circumference: 53.5 cm



## HAIR ENHANCEMENT

Boost your confidence and look your best. Our quality hair enhancements are designed to create instant transformation that will make you shine.

Light, breathable base constructions matched with touchable hair in a variety of beautifully rich colors provide the ultimate versatility and comfort.

### Long TP 732

Adds long luxurious coverage from the fringe to the crown.

**Base Construction:**  
Machine-made  
Hair Length: 18" (45.5 cm)  
Weight: 2.5 oz (70 g)

**Color Shown:**  
Iced Mocha-R

**Available Colors:**  
**Brunettes:**  
Espresso  
Dark Chocolate  
Ginger Brown  
Medium Brown

**Hybrant Brunettes:**  
Coffee Latte-R  
Iced Mocha-R  
Maple Sugar-R

**Blonds:**  
Harvest Gold  
Spring Honey  
Gold Blond

**LR Brunettes:**  
Marble Brown-LR

**Hybrant Blonds:**  
Nutmeg-R  
Creamy Toffee-R

**LR Blonds:**  
Macadamia-LR

**Hybrant Reds:**  
Almond Spice-R



## New Addition 770

A great enhancer designed to provide extra volume or a fresh look.

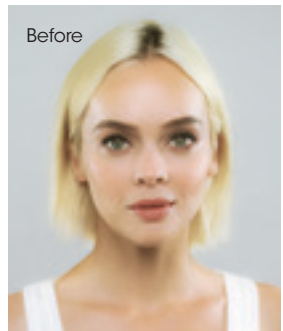
**Base Construction:**  
Machine-made  
Hair Length: 4" (10 cm)  
Crown: 4.5" (11.5 cm)  
Weight: 1 oz (28 g)

**Color Shown:**  
Creamy Toffee

**Available Colors:**  
**Brunettes:**  
Espresso  
Dark Chocolate  
Coffee Latte  
Ginger Brown  
Marble Brown  
Medium Brown  
Light Chocolate

**Blonds:**  
Harvest Gold  
Spring Honey  
Creamy Toffee  
Gold Blond

**Grays:**  
Silver Stone™  
60



## Evanna TP 771

One of our top-selling styles now available as a top piece! Gorgeous salon finish beach waves for a shaggy shoulder-length look.

**Base Construction:**  
Lace front + lace part  
Fringe: 11.5" (29.2 cm)  
Crown: 11.5" (29.2 cm)  
Weight: 2.08 oz (59 g)

**Color Shown:**  
Ice Blond

**Available Colors:**  
**Brunettes:**  
Dark Chocolate  
Ginger Brown  
Medium Brown

**LR Brunettes:**  
Marble Brown-LR

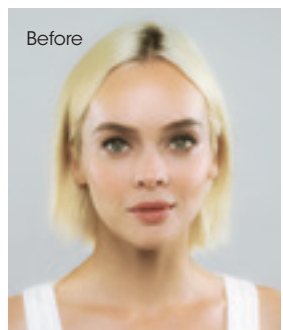
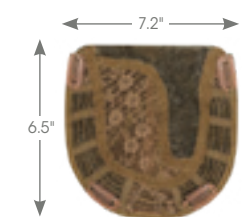
**Blonds:**  
Ice Blond

**Hybrant Blonds:**  
Rose Gold-R

**LR Blonds:**  
Mochaacino-LR  
Creamy Toffee-LR

**Grays:**  
Silver Stone

**Hybrant Grays:**  
Illumina-R



## Medium TP 731

An enhancer that provides extra volume and fullness.

**Base Construction:**  
Machine-made  
Hair Length: 8" (20.5 cm)  
Weight: 1.52 oz (43 g)

**Color Shown:**  
Gold Blond

**Available Colors:**  
**Brunettes:**  
Espresso  
Cappuccino  
Dark Chocolate  
Ginger Brown  
Medium Brown

**Hybrant Brunettes:**  
Coffee Latte-R  
Iced Mocha-R  
Maple Sugar-R

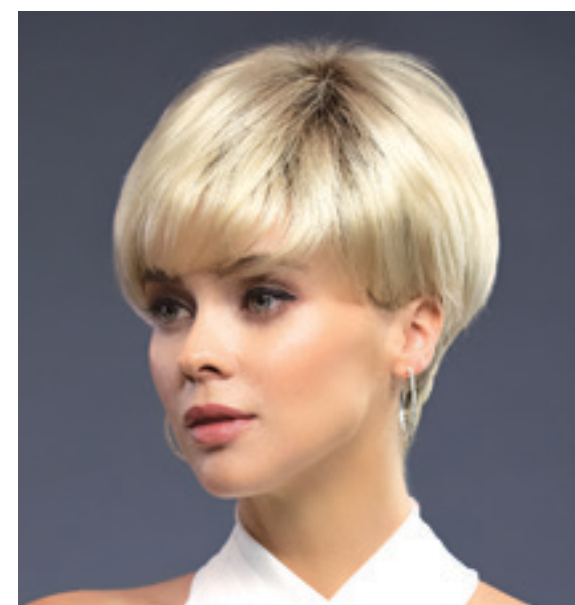
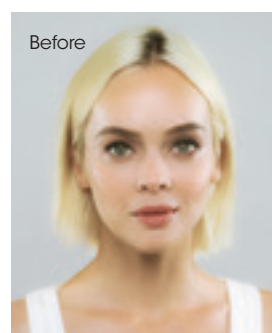
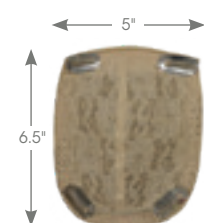
**LR Brunettes:**  
Marble Brown-LR

**Blonds:**  
Harvest Gold  
Spring Honey  
Gold Blond

**Hybrant Blonds:**  
Nutmeg-R  
Creamy Toffee-R

**Hybrant Reds:**  
Almond Spice-R

**Grays:**  
Silver Stone™



## Modern TP 772

Flawless enhancer adding dimension and density to an everyday look.

**Base Construction:**  
Machine-made  
Fringe: 7.08" (18cm)  
Crown: 3.93 (10cm)  
Weight: 1.44oz (41g)

**Color Shown:**  
Champagne-R

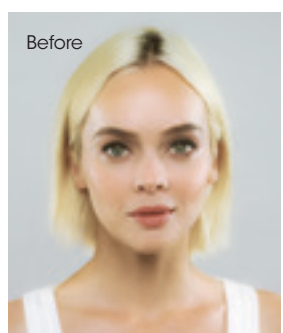
**Available Colors:**  
**Brunettes:**  
Dark Chocolate  
Ginger Brown  
Medium Brown

**Hybrant Brunettes:**  
Marble Brown-R  
Maple Sugar-R

**Blonds:**  
Harvest Gold  
Nutmeg-F

**Hybrant Blond:**  
Champagne-R  
Creamy Toffee-R

**Grays:**  
Silver Stone™  
60





ACCESSORIES



8123  
21" MANNEQUIN



8119  
17" MANNEQUIN



9580  
WIG CAP

Available Colors:  
Beige, Black,  
and Brown



9581  
WIG LINER  
Open Mesh

Available Colors:  
Beige, Black, and  
Brown



8113 MANNEQUIN  
HOOK



9587  
ROP WIG LIFT COMB



8128  
18" WHITE  
MANNEQUIN



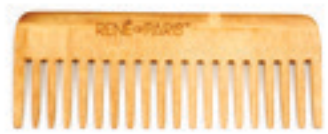
8129  
18" GRAY  
MANNEQUIN  
with logo



8130  
18" BLACK  
MANNEQUIN  
with logo



8131  
18" WHITE  
MANNEQUIN  
with logo



9589  
ROP BAMBOO BASIN COMB



9591  
ROP FOLDING BRUSH

9582  
WIG STAND  
PACKAGE

3pc package contains  
colors: Black, Blue &  
Gray

Sold separately:  
9583  
BLACK, BLUE, GRAY



Convenient "snap together" stand for wig storage or service.



9590  
ROP TAIL COMB



9561  
RENE OF PARIS FLAT IRON



965  
WIRE BRUSH

RENÉ of PARIS™  
MAINTENANCE TOOLS

Rene of Paris Prepare Shampoo

This luxurious shampoo is formulated with the ultimate in moisture replenishing cleansers. Rene of Paris Prepare Shampoo helps maintain the smoothness, strength and polish of your wig/hairpiece.

The gentle combination of plant and vegetable extracts, along with natural essential oils and vitamins, provides a gentle but thorough cleansing of your wig/hairpiece. The results will revolutionize how you feel.

Rene of Paris Light Conditioner

Rene of Paris Conditioner for synthetic wigs revitalizes dull hair leaving it softer, shinier and easy to manage.

Rene of Paris Revive Liquid Enhancement

The finest advanced liquid developed for synthetic fiber hair. Rene of Paris Revive Liquid Enhancement will revive your wig/hairpiece and give it the brand new feel. Not only helps eliminate frizz while adding luster, texture and volume, but also protects your wig/hairpiece from the daily stresses.

Rene of Paris Protect Holding Spray

The final step in maintaining and styling your wig/hairpiece. This holding spray adds shine while gently, yet firmly, holding your desired style.



ROP Prepare  
Shampoo  
9950 | 8 oz.  
9954 | 2 oz.

ROP Light  
Conditioner  
9953 | 8 oz.  
9955 | 2 oz.

ROP Protect  
Holding Spray  
9952 | 8 oz.  
9956 | 2 oz.

ROP Revive  
Liquid  
Enhancement  
9951 | 8 oz.

We are delighted that you have chosen to become one of our valued customers. We appreciate your business as well as any inquiries regarding the following:

APPLICABILITY:

1. The following terms and conditions ("Terms") are the only terms which govern the sale of the goods ("Goods") by Aderans Hair Goods, Inc. ("AHG") to its customers (each referred to hereafter as "Buyer," or "You"). Notwithstanding anything herein to the contrary, if a written contract signed by both parties is in existence covering the sale of the Goods covered hereby, the terms and conditions of said contract shall prevail to the extent they are inconsistent with these Terms.

2. These Terms, together with the applicable invoice and the Statement of Policy defined below (collectively, this "Agreement"), comprise the entire agreement between the parties, and supersede all prior or contemporaneous understandings, agreements, negotiations, representations and warranties, and communications, both written and oral. These Terms prevail over any of Buyer's general terms and conditions of purchase regardless whether or when Buyer has submitted its purchase order or such terms. Acceptance of Buyer's purchase order or fulfillment of Buyer's order does not constitute acceptance of any of Buyer's terms and conditions and does not serve to modify or amend these Terms.

**ACCEPTANCE OF PURCHASE ORDER.** AHG has the right, in its sole discretion, to accept or reject any purchase order issued by You. AHG may accept any purchase order by confirming the order (whether by written confirmation, invoice or otherwise) or by delivering the Goods, whichever occurs first. No purchase order is binding on AHG unless accepted by AHG.

**PRICES.** You shall purchase the Goods from AHG at the prices set forth in AHG's price list in effect at the time that AHG accepts Your purchase order ("Prices"). Prices are exclusive of, and You are solely responsible for, and shall pay, any and all taxes, with respect to, or measured by, the manufacture, sale, shipment, use or Price of the Goods; provided, however, that You shall not be responsible for any taxes imposed on, or with respect to, AHG's income, revenues, gross receipts, personnel or real or personal property or other assets.

**PAYMENT TERMS:** AHG accepts payment by Visa, MasterCard, AMEX, Discover, money order, wire transfer and COD. Upon approval, credit terms may be available.

**CREDIT PURCHASES:** If You wish to apply for an AHG 30-day open account (NET-30), contact Your AHG sales representative and request a credit application.

**SHIPPING/HANDLING:** You will pay for all shipping charges and insurance costs. AHG offers shipping via UPS next day air, 2-3 day air, and ground. There is a handling charge of \$1.00 for all orders. For each purchase order accepted by AHG, AHG may, in its sole discretion, without liability or penalty, make partial shipments of Goods to You. Each shipment will constitute a separate sale and You will pay for the units shipped whether such shipment is in whole or partial fulfillment of a purchase order.

**TRANSFER OF TITLE & RISK OF LOSS:** Title passes to You upon delivery of the Goods to the address You specified in the purchase order. Risk of loss or damage to the Goods passes to You upon AHG's tender of such units to the carrier at AHG's location in Chatsworth, CA.

**STATEMENT OF POLICY:** You must comply with the Statement of Policy and Guidelines for Using Aderans' Trademarks and Copyrights (the "Statement of Policy") which was provided to You and which may be modified or updated by AHG from time to time in its sole discretion.

**RETURN POLICY:** Returns will not be accepted unless pre-authorized by (AHG). Requests must be made within 30 days from receipt of Goods. Upon approval and receipt of the authorization for return label, Goods meeting the following conditions may be returned for an exchange or direct credit to Your account (freight prepaid by Buyer). NO cash refunds! If an item is to be exchanged, new shipping and handling charges will be added.

1. A copy of Your invoice must accompany all returns. The authorization for return label must be placed on the outside of the box (complete with the authorization number) and Your return address. If not, the box will be refused.

2. Returned Goods must be in MINT CONDITION. Mint condition is defined by AHG as: no missing tags or labels, the hair net is not removed, item(s) are not combed/fluffed or tried on by a customer. All returns must be in original shipping box. There is a restocking fee of \$10.00 for EACH piece returned.

3. AHG has carefully designed its product packaging to protect the product integrity. AHG is not responsible for damage to or problems with any product where the product and/or shipment packaging has been changed per Your request. No returns will be accepted under these conditions.

4. Shipping and handling fees are non-refundable.

5. Any DISCONTINUED items are not returnable.

6. AHG is not responsible for lost return packages.

It is recommended that You keep proper Proof-of-Delivery. Goods not meeting the above stipulations will be refused. AHG will not accept returns more than 30 days after receipt of Goods. If there is a factory defect or an incorrectly shipped item due to our error, a full exchange or credit will be applied directly to Your account. Note: If an item is returned for a "defective" credit and upon examination found not to be defective, credit will only be given for the item's original price (providing it still meets the above standards), and a \$10.00 restocking charge will be applied. Any additional product not authorized for return will be sent back.

**NOTE:** Colors shown in this catalog may not reflect actual color of product. RENÉ OF PARIS is a trademark or registered trademark of Aderans Hair Goods, Inc. and/or Aderans Co., Ltd. in the United States and other countries.

CHRISTINE HEADWEAR and the Christine Headwear logo are trademarks and/or registered trademarks of The Headwear Company in the United States and other countries.



9511  
SWATCHES

The color  
swatches let you  
see your perfect  
hair match.





# RENÉ of PARIS™

2021 HI-FASHION COLLECTION

Distributed by Aderans Hair Goods  
9135 Independence Avenue Chats-  
worth, CA 91311 USA  
Toll Free: 800.353.7363  
Fax: 818.885.0134

FRONT/BACK COVER: Nolan in Spring Honey-T

[www.reneofparis.com](http://www.reneofparis.com)

FOLLOW US ON:



ROP HI-FASHION CATALOG 2021



2110541