



NORIKO<sup>TM</sup>

2021/2022 COLLECTION





NORIKO™





## MAKE AN IMPRESSION

with the new 2021-2022  
Noriko Collection.

INTRODUCING  
OUR NEWEST STYLES:  
Harlee, Meadow, and Zane

Our latest styles feature our  
lightest machine made and  
Lace Front + Lace Part caps.

With new styles also come new  
colors. Set your sights on the  
newest colors this season:  
Seashell Blond-R, Desert Sand-R,  
Rose Gold-R, Milk Tea-LR, and  
Silver Stone-R.

From left to right: Meadow in Desert Sand-R, Harlee in  
Melted Coconut, Zane in Creamy Toffee-R





**17**  
TAYLOR  
1708



**NEW**

**MEADOW 1719** | pg 10



**NEW**

**HARLEE 1718** | pg 8

## **6 AVAILABLE COLORS**

### **LACE FRONT WIGS**

**14** ALEXI 1711

### **LACE FRONT WIGS + LACE PART**

**15** EDEN 1710

**15** EMERY 1714

**16** FAITH 1705

**17** TAYLOR 1708

**18** ZION 1712

### **MONOFILAMENT WIGS**

**18** JOLIE 1662

**19** KENZIE 1684

**19** RYAN 1653

**20** SHILO 1654

### **PARTIAL MONOFILAMENT WIGS**

**21** ANGELICA PM 1696

**21** REESE PM 1697

### **LARGE CAP MACHINE-MADE WIGS**

**22** ANGELICA LARGE CAP 1702

**23** REESE LARGE CAP 1703

**23** SKY LARGE CAP 1699







## MACHINE-MADE WIGS

- 24 ALVA 1715
- 25 ANGELICA 1625
- 26 AVERY 1677
- 27 BILLIE 1701
- 28 CARRIE 1674
- 29 CLAIRE 1647
- 29 CORY 1633
- 30 DOLCE 1686
- 30 DREW 1631
- 31 ELLIOT 1709



- 32 EVA 1672
- 33 HAILEY 1680
- 33 IVY 1679
- 34 JACKSON 1669
- 34 KATE 1668
- 35 LEXY 1642
- 35 MARIAH 1613
- 36 MASON 1632
- 37 MAY 1673
- 38 MEGAN 1607
- 38 MILLIE 1655
- 39 NIMA 1713
- 40 NORI 1682
- 41 PAM 1606
- 42 REESE 1660
- 43 ROBIN 1639
- 43 RONI 1641
- 44 SALLY 1616
- 45 SANDIE 1648
- 46 SEVILLE 1685
- 47 SKY 1649



**ZANE 1717** | pg 12

**42**  
REESE  
1660



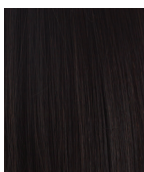
## 48 HAIR ENHANCEMENTS

- 48 MALIBU 1716
- 49 MILAN 1658

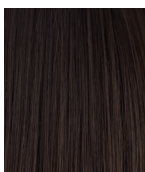
## 50 ACCESSORIES



## BRUNETTES



Expresso



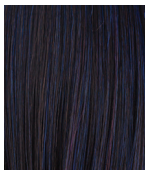
Cappucino



Chocolate Lava



Dark Chocolate



Blueberry Burst



Deep Smoky Brown



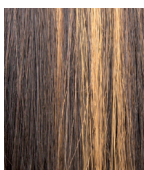
Coffee Latte



Java Frost



Ginger Brown



Kahlua Blast



Marble Brown



Toasted Brown



Medium Brown



Golden Brown



Light Chocolate



Pecan Brown



Chocolate Swirl

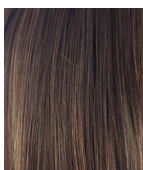
## HYBRANT BRUNETTES



Marble Brown-R



Chocolate Frost-R



Coffee Latte-R



Almond Rocka-R



Iced Mocha-R



Maple Sugar-R



Honey Brown-R

## BLONDS



Harvest Gold



Sunny Blond



Frosti Blond



Butter Pecan



Creamy Toffee



Chai Cream



Strawberry Swirl



Vanilla Lush



Butterscotch



Caramel Cream



Spring Honey



Gold Blond



Creamy Blond



Peach Gold



Platinum Pearl

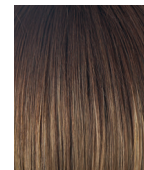
## HYBRANT BLONDS



Butter Pecan-R



Mocha-H



Mochaccino-R



Honey Wheat-R



Nutmeg-R/F



Rose Gold-R



Sugar Cane -R



Creamy Toast-R



Creamy Toffee-R



Spring Honey-R



Sandalwood-H



Champagne-R



Seashell Blond-R



Desert Sand-R

## AVAILABLE COLORS

**SPECIAL ORDERS:** If you don't see a favorite style in this catalog or if you want a style designed in a different color, just contact your AHG sales consultant and ask about placing a "special order." We will do our very best to accommodate your requests!

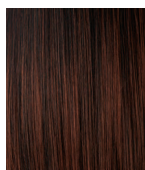
**1.800.353.7363**



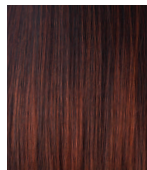
## REDS



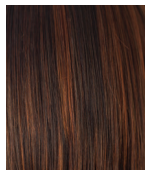
Mulberry Brown



Burgundy



Burgundy Rosa



Red Pepper



Garnet Glaze



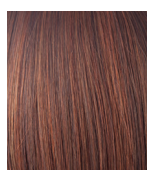
Red Brown



Ginger Highlight



Bronzed Brown



Chestnut

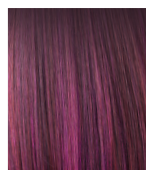


Coconut Spice



Dark Rust

## HYBRANT REDS



Plumberry Jam-R



Cayenne Spice-R



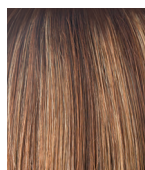
Raisin Glaze-H



Terracotta-H



Almond Spice-R



Auburn Sugar-R



Razberry Ice-R



Irish Spice-R



Burnt Sienna-R



Copper Glaze-R

## HYBRANT UNDERLIGHTS



Cherrywood

## GRAYS



Black Onyx



Midnite Pearl



Sandy Silver™



Silver Stone™



Simply White

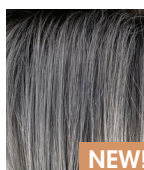
## HYBRANT GRAYS



Smoky Gray-R



Moonstone



Silver Stone-R

## MELTED BLENDS



Melted Marshmallow



Melted Coconut



Melted Plum

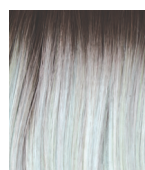
## HYBRANT PASTELS



Illumina-R



Bubblegum-R

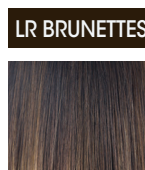


Seaglass-R

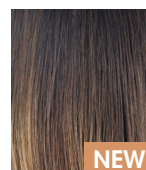


Lavendar Blush-R

## LR COLORS (LONG ROOTED)



Marble Brown-LR



Milk Tea-LR

NEW!



Kandy Brown-LR

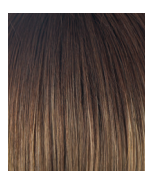
## LR BLONDS



Banana Split-LR



Macadamia-LR



Mochaccino-LR

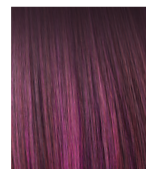


Creamy Toffee-LR

## LR REDS



Crimson-LR



Plumberry Jam-LR

### MELTED BLENDS

Our dazzling gradient tones. Modern, natural salon-like finish. Available in 3 contemporary colors.

### LONG ROOTED COLORS

Offer a dramatic ombré style root with a gradual lightening toward the ends.



NEW!



## HARLEE 1718

The soft-bodied texture of this long layered style is sure to provide a boost of daily confidence.

Color Shown:  
Melted Marshmallow (main, left inset)  
Desert Sand-R (top inset) **NEW!**  
Melted Coconut (bottom inset)

Cap: Lace front + lace part  
Weight: 4.4oz (125g)  
Fringe: 11" (28cm)  
Crown: 8.3" (21cm)  
Nape: 8.7" (22cm)

### AVAILABLE COLORS:

#### BRUNETTES:

Espresso  
Cappuccino  
Coffee Latte  
Ginger Brown  
Medium Brown

#### HYBRANT BRUNETTES:

Marble Brown-R  
Chocolate Frost-R  
Honey Brown-R  
Iced Mocha-R

#### LR BRUNETTES:

Kandy Brown-LR  
Milk Tea-LR

**BLONDS:**  
Creamy Blond

#### HYBRANT BLONDS:

Champagne-R  
Creamy Toffee-R  
Mochaccino-R  
Spring Honey-T  
Sugar Cane-R  
Rose Gold-R  
Seashell Blond-R **NEW!**  
Desert Sand-R **NEW!**

**REDS:**  
Chestnut  
Red Brown

**MELTED:**  
Melted Coconut  
Melted Marshmallow

**GRAYS:**  
Silver Stone™

**HYBRANT GRAYS:**  
Moonstone













**NEW!**

## MEADOW 1719

This short layered bob has a well-balanced fringe, which gives it natural movement.

Color Shown:  
Desert Sand-R (left, bottom inset) **NEW!**  
Silver Stone-R (top inset) **NEW!**  
Kandy Brown-LR (middle inset)

Cap: Light machine-made  
Weight: 2.6oz (78g)  
Fringe: 3.9" (10cm)  
Crown: 5.9" (15cm)  
Nape: 2.4" (6cm)

### AVAILABLE COLORS: BRUNETTES:

Espresso  
Cappuccino  
Coffee Latte  
Ginger Brown  
Medium Brown  
Deep Smoky Brown

### HYBRANT BRUNETTES:

Marble Brown-R  
Chocolate Frost-R  
Honey Brown-R  
Iced Mocha-R

### LR BRUNETTES:

Kandy Brown-LR

### BLONDS:

Creamy Blond

### HYBRANT BLONDS:

Champagne-R  
Creamy Toffee-R  
Mochaccino-R  
Spring Honey-R  
Sugar Cane-R  
Rose Gold-R  
Seashell Blond-R **NEW!**  
Desert Sand-R **NEW!**

### REDS:

Chestnut

### GRAYS:

Silver Stone™  
Simply White

### HYBRANT GRAYS:

Moonstone  
Silver Stone-R **NEW!**





NEW!



## ZANE 1717

Well-defined layers that fit any face shape. Tapered side-swept fringe, in a flattering shoulder-length style.

Color Shown:  
Chocolate Frost-R (main, left inset)  
Red Brown (middle inset)  
Seashell Blond-R (bottom inset) **NEW!**

Cap: Lace front+ lace part  
Weight: 4.0oz (113g)  
Fringe: 6.9" (17.5cm)  
Crown: 8.6" (22.5cm)  
Nape: 4.9" (12.5cm)

### AVAILABLE COLORS:

**BRUNETTES:**  
Espresso  
Cappuccino  
Ginger Brown  
Medium Brown  
Deep Smoky Brown  
Dark Chocolate

### HYBRANT BRUNETTES:

Marble Brown-R  
Coffee Latte  
Chocolate Frost-R  
Honey Brown-R  
Iced Mocha-R

### LR BRUNETTES:

Kandy Brown-LR  
Milk Tea-LR

**BLONDS:**  
Creamy Blond  
Peach Gold

**HYBRANT BLONDS:**  
Champagne-R  
Creamy Toffee-R  
Mochaccino-R  
Spring Honey-T  
Sugar Cane-R  
Rose Gold-R  
Seashell Blond-R **NEW!**  
Desert Sand-R **NEW!**

**REDS:**  
Chestnut  
Red Brown

**MELTED:**  
Melted Coconut  
Melted Marshmallow

**GRAYS:**  
Silver Stone™  
Simply White

**HYBRANT GRAYS:**  
Moonstone  
Silver Stone-R **NEW!**











## ALEXI 1711

This textured bob with bangs frames the face perfectly creating a modern fit.

**Color Shown:**  
Honey Brown-R (left)  
Mulberry Brown (right)

**Cap:** Lace Front  
**Fringe:** 3.93" (10cm)  
**Crown:** 10.62" (27 cm)  
**Nape:** 3.93" (10 cm)  
**Weight:** 3.98 oz (113g)

**AVAILABLE COLORS:**  
**BRUNETTES:**  
Deep Smoky Brown  
Ginger Brown

**HYBRANT BRUNETTES:**  
Marble Brown-R  
Coffee Latte  
Honey Brown-R

**HYBRANT BLONDS:**  
Champagne- R  
Creamy Toffee-R  
Mochaccino-R

**REDS:**  
Mulberry Brown

**HYBRANT REDS:**  
Razberry Ice-R

**MELTED:**  
Melted Plum  
Melted Marshmallow

**GRAYS:**  
Platinum Pearl





## EDEN 1710

This angled, A-line, wavy bob compliments and looks flattering on all face shapes.

**Color Shown:**  
Melted Marshmallow

**Cap:** Lace front + Lace part  
**Fringe:** 7.48" (19cm)  
**Crown:** 7.08" (18 cm)  
**Nape:** 1.96" (5 cm)  
**Weight:** 3.38 oz (96 g)

**AVAILABLE COLORS:**  
**BRUNETTES:**  
Deep Smoky Brown  
Ginger Brown

**HYBRANT BRUNETTES:**  
Marble Brown-R  
Coffee Latte  
Honey Brown-R

**HYBRANT BLONDS:**  
Champagne- R  
Creamy Toffee-R  
Mochaccino-R

**REDS:**  
Mulberry Brown

**HYBRANT REDS:**  
Razberry Ice-R

**HYBRANT PASTELS:**  
Illumina-R

**MELTED:**  
Melted Plum  
Melted Marshmallow

**GRAYS:**  
Platinum Pearl  
Silver Stone™

**HYBRANT GRAYS:**  
Smoky Gray-R



## EMERY 1714

This chin-length, layered bob creates a modern yet classical look. The soft body and natural lift flatters any face shape.

**Color Shown:**  
Kandy Brown-LR

**Cap:** Lace front + Lace part  
**Fringe:** 7.1" (18 cm)  
**Crown:** 6.3" (16 cm)  
**Nape:** 2.4" (6 cm)  
**Weight:** 2.9 oz (81 g)

**AVAILABLE COLORS:**  
**BRUNETTES:**  
Espresso  
Cappuccino  
Dark Chocolate  
Medium Brown  
Deep Smoky Brown  
Ginger Brown

**HYBRANT BRUNETTES:**  
Coffee Latte  
Chocolate Frost-R  
Iced Mocha-R  
Honey Brown-R

**BLONDS:**  
Creamy Blond  
Peach Gold

**HYBRANT BLONDS:**  
Spring Honey-R  
Sugar Cane-R  
Creamy Toffee-R

**REDS:**  
Red Brown  
Chestnut

**HYBRANT REDS:**  
Razberry Ice-R

**LR BRUNETTES:**  
Marble Brown-LR  
Kandy Brown-LR

**LR BLONDS:**  
Mochaccino-LR

**MELTED:**  
Melted Marshmallow

**GRAYS:**  
Silver Stone™  
Simply White

**HYBRANT GRAYS:**  
Moonstone



## FAITH 1705

Timeless asymmetrical bob with face-framing layers.

Color Shown:  
Silver Stone™

Cap: Lace front + Lace part  
Fringe: 11.02" (28 cm)  
Crown: 8.85" (22.5 cm)  
Nape: 1.96" (5 cm)  
Weight: 3.31 oz ( 94 g)

**AVAILABLE COLORS:**  
**BRUNETTES:**  
Cappucino

**HYBRANT BRUNETTES:**  
Chocolate Frost-R  
Iced Mocha-R  
Coffee Latte-R

**HYBRANT BLONDS:**  
Spring Honey-R  
Champagne-R

**LR BLONDS:**  
Creamy Toffee-LR  
Nutmeg-F  
Mochaccino-LR

**REDS:**  
Mulberry Brown

**HYBRANT REDS:**  
Almond Spice-R

**HYBRANT PASTELS:**  
Bubblegum-R

**GRAYS:**  
Silver Stone™







## TAYLOR 1708

This sleek, sophisticated a-line bob features face-framing layers and side swept fringe.

**Color Shown:**  
Mochaccino-LR

**Cap:** Lace front + Lace part  
**Fringe:** 12.99" (33 cm)  
**Crown:** 9.84" (25 cm)  
**Nape:** 2.75" (7 cm)  
**Weight:** 4.05 oz (115 g)

**AVAILABLE COLORS:**  
**BRUNETTES:**  
Dark Chocolate  
Ginger Brown

**HYBRANT BRUNETTES:**  
Coffee Latte-R

**LR BRUNETTES:**  
Marble Brown-LR

**BLONDS:**  
Platinum Pearl

**HYBRANT BLONDS:**  
Sugar Cane-R  
Champagne-R

**LR BLONDS:**  
Mochaccino-LR  
Creamy Toffee-LR

**REDS:**  
Mulberry Brown

**LR REDS:**  
Plumberry Jam-LR

**HYBRANT PASTELS:**  
Bubblegum-R





## ZION 1712

Get a stylish modern look with this sleek bob with shaggy ends.

Color Shown:  
Illumina-R

Cap: Lace front + Lace part  
Fringe: 8.26" (21 cm)  
Crown: 9.05" (23 cm)  
Nape: 3.93" (10 cm)  
Weight: 3.8 oz (108 g)

**AVAILABLE COLORS:**  
**BRUNETTES:**  
Deep Smoky Brown  
Ginger Brown

**HYBRANT BRUNETTES:**  
Marble Brown-R  
Coffee Latte  
Honey Brown-R

**HYBRANT BLONDS:**  
Champagne- R  
Creamy Toffee-R  
Mochaccino-R

**REDS:**  
Mulberry Brown

**HYBRANT REDS:**  
Razberry Ice-R

**HYBRANT PASTELS:**  
Illumina-R

**MELTED:**  
Melted Plum  
Melted Marshmallow

**GRAYS:**  
Platinum Pearl

**HYBRANT GRAYS:**  
Smoky Gray-R



## JOLIE 1662

Add texture and volume with this perfectly layered, modern bob.

Color Shown:  
Razberry Ice-R

Cap: Monofilament Top  
Fringe: 5.5" (14 cm)  
Crown: 5.5" (14 cm)  
Nape: 3.9" (10 cm)  
Weight: 3.49 oz (99 g)

**AVAILABLE COLORS:**  
**BRUNETTES:**  
Chocolate Swirl  
Ginger Brown  
Kahlua Blast  
Marble Brown  
Toasted Brown

**HYBRANT BRUNETTES:**  
Coffee Latte-R  
Chocolate Frost-R  
Maple Sugar-R

**BLONDS:**  
Spring Honey  
Creamy Blond

**HYBRANT BLONDS:**  
Mocha-H  
Mochaccino-R  
Nutmeg-F  
Creamy Toast  
Creamy Toffee-R  
Champagne-R

**HYBRANT REDS:**  
Auburn Sugar-R  
Razberry Ice-R

**GRAYS:**  
Sandy Silver™  
Silver Stone™





## KENZIE 1684

Stylish cut featuring long, textured layers on the back and sides and sweeping bangs.

Color Shown:  
Sugar Cane-R

Cap: Monofilament Top  
Fringe: 5.1 - 7.1" (13-18 cm)  
Crown: 10.6" (27 cm)  
Nape: 8.7" (22 cm)  
Weight: 4.8 oz (136 g)

### AVAILABLE COLORS:

**BRUNETTES:**  
Dark Chocolate  
Chocolate Swirl  
Ginger Brown  
Marble Brown  
Toasted Brown

### HYBRANT BRUNETTES:

Coffee Latte-R  
Maple Sugar-R

### BLONDS:

Spring Honey  
Creamy Blond

### HYBRANT BLONDS:

Mochaccino-R  
Nutmeg-R  
Sugar Cane-R  
Creamy Toffee-R

### HYBRANT REDS:

Auburn Sugar-R  
Copper Glaze-R



## RYAN 1653

Be bold with this eye-catching feathered, layered cut.

Color Shown:  
Chocolate Swirl

Cap: Monofilament Top  
Fringe: 3.9" (10 cm)  
Crown: 5.1 (13 cm)  
Nape: 3.5" (9 cm)  
Weight: 2.6 oz (74 g)

### AVAILABLE COLORS:

**BRUNETTES:**  
Chocolate Swirl  
Ginger Brown  
Marble Brown  
Toasted Brown

### HYBRANT BRUNETTES:

Iced Mocha-R  
Maple Sugar-R

### BLONDS:

Harvest Gold  
Strawberry Swirl  
Spring Honey  
Creamy Blond

### HYBRANT BLONDS:

Mochaccino-R  
Nutmeg-F  
Creamy Toffee-R

### REDS:

Chestnut

### HYBRANT REDS:

Almond Spice-R  
Auburn Sugar-R





## SHILO 1654

Long, soft layers create great movement in this flirtatious style.

Color Shown:  
Chocolate Swirl

Cap: Monofilament Top  
Fringe: 8.1" (20.5 cm)  
Crown: 15" (38 cm)  
Nape: 14.8" (37.5 cm)  
Weight: 5.7 oz (160 g)

**AVAILABLE COLORS:**  
**BRUNETTES:**  
Espresso  
Cappucino  
Dark Chocolate  
Chocolate Swirl  
Marble Brown  
Medium Brown

**BLONDS:**  
Spring Honey  
Creamy Blond  
Creamy Toffee

**HYBRANT BLONDS:**  
Mocha-H  
Nutmeg-F  
Sandlewood-H  
Champagne-R

**REDS:**  
Chestnut

**HYBRANT REDS:**  
Almond Spice-R





## ANGELICA PM 1696

One of our NORIKO best sellers now available in a partial monofilament cap.

Long, textured layers fall to mid-back in this full, "flowy" design.

Color Shown:  
Plumberry Jam-LR

Cap: Partial Monofilament Top  
Fringe: 8.5" (21.5 cm)  
Crown: 16.1" (41 cm)  
Nape: 16.1" (41 cm)  
Weight: 6.7 oz (192 g)

### AVAILABLE COLORS:

**BRUNETTES:**  
Cappucino  
Dark Chocolate  
Ginger Brown  
Kahlua Blast  
Medium Brown  
Marble Brown  
Chocolate Swirl

### HYBRANT BLONDS:

Mochaccino-R  
Honey Wheat-R  
Creamy Toffee-R  
Spring Honey-R  
Champagne-R

### LR BLONDS:

Marble Brown-LR  
Macadamia-LR

### LR REDS:

Plumberry Jam-LR



## REESE PM 1697

One of our NORIKO best sellers now available in a partial monofilament cap.

This sassy bob has tousled layers and an edgy fringe.

Color Shown:  
Marble Brown-LR

Cap: Partial Monofilament Top  
Fringe: 6.1" (15.5 cm)  
Crown: 5.5" (14 cm)  
Nape: 4.1" (10.5 cm)  
Weight: 3.1 oz (88 g)

### AVAILABLE COLORS:

**BRUNETTES:**  
Chocolate Swirl

### HYBRANT BRUNETTES:

Chocolate Frost-R  
Maple Sugar-R

### BLONDS:

Creamy Blond

### HYBRANT BLONDS:

Mochaccino-R  
Nutmeg-F  
Creamy Toffee-R  
Champagne-R

### HYBRANT REDS:

Almond Spice-R  
Razberry Ice-R

### HYBRANT PASTELS:

Illumina-R

### LR BRUNETTES:

Marble Brown-LR

### LR REDS:

Plumberry Jam-LR





Color Shown: Toasted Brown

Cap: Large Machine-Made  
Fringe: 7.3" (18.5 cm)  
Crown: 16.1" (41 cm)  
Nape: 16.1" (41 cm)  
Weight: 6.9 oz (195.6 g)

**AVAILABLE COLORS:**

**BRUNETTES:**

Cappucino  
Dark Chocolate  
Chocolate Swirl  
Ginger Brown  
Toasted Brown  
Medium Brown

**BLONDS:**

Platinum Pearl

**HYBRANT BLONDS:**

Nutmeg-F  
Creamy Toffee-R  
Spring Honey-R  
Champagne-R

**HYBRANT UNDERLIGHTS:**

Cherrywood

**LR BRUNETTES:**

Marble Brown-LR

**LR BLONDS:**

Macadamia-LR

**LR REDS:**

Plumberry Jam-LR

## ANGELICA LARGE CAP 1702

Top selling style available in a larger cap size - Approximately 1.5" larger than the original size!







# REESE LARGE CAP 1703

Top selling style available in a larger cap size -  
Approximately 1.5" larger than the original size!

- Color Shown: Red Pepper

Cap: Large Machine-Made  
Fringe: 4.9" (12.5 cm)  
Crown: 5.7" (14.5 cm)  
Nape: 4.1" (10.5 cm)  
Weight: 3.0 oz (85.05 g)

**AVAILABLE COLORS:**  
**BRUNETTES:**  
Chocolate Swirl  
Ginger Brown  
Kahlua Blast
- HYBRANT BRUNETTES:**  
Marble Brown-R  
Coffee Latte-R  
Chocolate Frost-R  
Iced Mocha-R  
Maple Sugar-R

**HYBRANT BLONDS:**  
Mochaccino-R  
Nutmeg-F  
Creamy Toffee-R  
Spring Honey-R  
Champagne-R
- HYBRANT UNDERLIGHTS:**  
Cherrywood

**REDS:**  
Ginger Highlight  
Chestnut  
Red Pepper

**HYBRANT REDS:**  
Almond Spice-R  
Razberry Ice-R



# SKY LARGE CAP 1699

Top selling style now available in a larger cap size -  
approximately 1.5" larger than the original size!

- Color Shown: Iced Mocha-R

Cap: Large Machine-Made  
Fringe: 5.3" (13.5 cm)  
Crown: 5.3" (13.5 cm)  
Nape: 3.9" (10 cm)  
Weight: 2.8 oz (75 g)

**AVAILABLE COLORS:**  
**BRUNETTES:**  
Cappucino  
Dark Chocolate  
Chocolate Swirl  
Ginger Brown  
Kahlua Blast  
Marble Brown
- HYBRANT BRUNETTES:**  
Coffee Latte-R  
Iced Mocha-R

**BLONDS:**  
Spring Honey  
Creamy Blond

**HYBRANT BLONDS:**  
Mochaccino-R  
Nutmeg-F  
Sugar Cane-R  
Creamy Toffee-R  
Champagne-R
- REDS:**  
Chestnut

**HYBRANT REDS:**  
Raisin Glaze-H  
Almond Spice-R

**GRAYS:**  
Sandy Silver™  
Silver Stone™





## ALVA 1715

Trendsetting, collar-length bob with a tapered fringe.

The layers and length combine to create natural movement and a versatile look.



Color Shown:  
Red Brown (left)  
Peach Gold (right)

Cap: Feather Light Machine-Made  
Fringe: 3.9" (10 cm)  
Crown: 9.4" (24 cm)  
Nape: 3.9" (10 cm)  
Weight: 3.7 - 3.9 oz (105-110 g)

### AVAILABLE COLORS: BRUNETTES:

Espresso  
Cappuccino  
Dark Chocolate  
Medium Brown  
Deep Smoky Brown  
Ginger Brown

### HYBRANT BRUNETTES:

Coffee Latte  
Chocolate Frost-R  
Marble Brown-R  
Iced Mocha-R  
Honey Brown-R

**BLONDS:**  
Creamy Blond  
Peach Gold

### HYBRANT BLONDS:

Mochaccino-R  
Champagne-R  
Spring Honey-R  
Sugar Cane-R  
Creamy Toffee-R

**REDS:**  
Red Brown  
Chestnut

**LR BRUNETTES:**  
Kandy Brown-LR

**MELTED:**  
Melted Marshmallow

**GRAYS:**  
Silver Stone™  
Simply White

**HYBRANT GRAYS:**  
Moonstone



# ANGELICA

## 1625

Long, textured layers fall to mid-back in this full "flowy" design.

Color Shown:  
Butter Pecan-R

Cap: Machine-Made  
Fringe: 7.9" (20 cm)  
Crown: 16" (40.5 cm)  
Nape: 15.7" (40 cm)  
Overall: 26" (66 cm)  
Weight: 6.67 oz (189 g)

### AVAILABLE COLORS:

#### BRUNETTES:

Espresso  
Cappucino  
Dark Chocolate  
Chocolate Swirl  
Ginger Brown  
Marble Brown  
Toasted Brown  
Medium Brown  
Golden Brown

#### HYBRANT BRUNETTES:

Almond Rocka-R  
Iced Mocha-R  
Maple Sugar-R

#### BLONDS:

Vanilla Lush  
Spring Honey  
Creamy Blond

#### HYBRANT BLONDS:

Butter Pecan-R  
Mocha-H  
Mochaccino-R  
Honey Wheat-R  
Nutmeg-F  
Sugar Cane-R  
Creamy Toffee-R  
Sandalwood-H  
Champagne-R

#### REDS:

Chestnut

#### HYBRANT REDS:

Raisin Glaze-H  
Almond Spice-R  
Auburn Sugar-R  
Razberry Ice-R  
Copper Glaze-R

#### LR BLONDS:

Banana Split-LR  
Macadamia-LR

#### LR REDS:

Crimson-LR

#### HYBRANT PASTELS:

Illumina-R  
Bubblegum-R





## AVERY 1677

The long soft layers and wavy curls create sexy, feminine appeal.



Color Shown: Honey Wheat-R

Cap: Machine-Made  
Fringe: 4.13" (11 cm)  
Crown: 11.8" (30 cm)  
Nape: 15.4" (39 cm)  
Weight: 5.7 oz (162 g)

**AVAILABLE COLORS:**  
**BRUNETTES:**

Cappucino  
Dark Chocolate  
Ginger Brown  
Marble Brown  
Toasted Brown

**HYBRANT BRUNETTES:**

Coffee Latte-R  
Almond Rocka-R  
Maple Sugar-R

**BLONDS:**

Mochaccino-R  
Creamy Blond

**HYBRANT BLONDS:**

Honey Wheat-R  
Nutmeg-R  
Creamy Toffee-R

**REDS:**

Chestnut

**HYBRANT REDS:**

Burnt Sienna-R





## BILLIE 1701

Short, spiky, and flattering style for a decidedly edgy look.

Color Shown: Marble Brown-R

Cap: Feather Light Machine-Made

Fringe: 3.5" (9 cm)

Crown: 3.5" (9 cm)

Nape: 1.4" (3.5 cm)

Weight: 2.3 oz (65.2 g)

### AVAILABLE COLORS:

#### BRUNETTES:

Cappucino

Ginger Brown

#### HYBRANT BRUNETTES:

Marble Brown-R

Coffee Latte-R

Chocolate Frost-R

#### BLONDS:

Creamy Blond

#### HYBRANT BLONDS:

Mochaccino-R

Nutmeg-F

Creamy Toffee-R

Champagne-R

#### HYBRANT UNDERLIGHTS:

Cherrywood

#### HYBRANT REDS:

Razberry Ice-R

#### LR REDS:

Plumberry Jam-R

#### HYBRANT PASTELS:

Illumina-R

Bubblegum-R

#### GRAYS:

Silver Stone™







## CARRIE 1674

This tousled, curly style falls just below the shoulder and has a soft, face-framing fringe.

Color Shown:  
Irish spice-R

Cap: Machine-Made  
Fringe: 7" (18 cm)  
Crown: 10.4" (26.5 cm)  
Nape: 7.5" (19 cm)  
Weight: 5.2 oz (147 g)

**AVAILABLE COLORS:**  
**BRUNETTES:**  
Espresso  
Dark Chocolate  
Cappuccino  
Ginger Brown  
Marble Brown  
Toasted Brown

**HYBRANT BRUNETTES:**  
Coffee Latte-R  
Almond Rocka-R  
Maple Sugar-R

**BLONDS:**  
Spring Honey  
Creamy Blond

**HYBRANT BLONDS:**  
Butter Pecan-R  
Mochaccino-R  
Honey Wheat-R  
Nutmeg-R  
Sugar Cane-R  
Creamy Toffee-R  
Champagne-R

**REDS:**  
Garnet Glaze

**HYBRANT REDS:**  
Almond Spice-R  
Auburn Sugar-R  
Irish Spice-R  
Copper Glaze-R





## CLAIRE 1647

Short, layered cut flips at the collar and has soft, textured edges.

Color Shown: Chestnut

Cap: Machine-Made  
Fringe: 5.5" (14 cm)  
Crown: 8.3" (21 cm)  
Nape: 5.9" (15 cm)  
Weight: 3.2 oz (92 g)

### AVAILABLE COLORS:

#### BRUNETTES:

Cappucino  
Dark Chocolate  
Chocolate Swirl  
Ginger Brown  
Marble Brown  
Toasted Brown  
Medium Brown

#### HYBRANT BRUNETTES:

Almond Rocka-R  
Iced Mocha-R  
Maple Sugar-R

#### BLONDS:

Harvest Gold  
Strawberry Swirl  
Vanilla Lush  
Caramel Cream  
Spring Honey  
Creamy Blond

#### HYBRANT BLONDS:

Mocha-H  
Mochaccino-R  
Honey Wheat-R  
Nutmeg-F  
Sugar Cane-R  
Creamy Toffee-R  
Sandalwood-H  
Champagne-R

#### REDS:

Chestnut

#### HYBRANT REDS:

Raisin Glaze-H  
Terracotta-H  
Almond Spice-R  
Razberry Ice-R  
Copper Glaze-R



## CORY 1633

This classic bob frames the face with a soft, textured fringe.

Color Shown: Cappucino

Cap: Machine-Made  
Fringe: 3.1" (8 cm)  
Crown: 8.5" (21.5 cm)  
Nape: 1.8" (4.5 cm)  
Weight: 3.1 oz (89 g)

### AVAILABLE COLORS:

#### BRUNETTES:

Expresso  
Cappucino  
Dark Chocolate  
Ginger Brown  
Marble Brown  
Toasted Brown  
Medium Brown  
Light Chocolate  
Pecan Brown

#### BLONDS:

Harvest Gold  
Frosti Blond  
Strawberry Swirl  
Vanilla Lush  
Caramel Cream  
Spring Honey  
Gold Blond  
Creamy Blond

#### REDS:

Chestnut

#### GRAYS:

Sandy Silver™  
Silver Stone™





## DOLCE 1686

Voluminous wavy layers softly graduate to the chin creating a chic, flirty bob.

Color Shown:  
Coffee Latte-R

Cap: Machine-Made  
Fringe: 6.1" (15.5 cm)  
Crown: 7.48" (19 cm)  
Nape: 2.8" (7 cm)  
Weight: 2.9 oz (83 g)

### AVAILABLE COLORS:

**BRUNETTES:**  
Dark Chocolate  
Ginger Brown  
Marble Brown

### HYBRANT BRUNETTES:

Chocolate Frost-R  
Coffee Latte-R  
Almond Rocka-R  
Maple Sugar-R

### BLONDS:

Creamy Blond

### HYBRANT BLONDS:

Mochaccino-R  
Sugar Cane -R  
Creamy Toffee-R  
Nutmeg-R  
Champagne-R

### HYBRANT REDS:

Razberry Ice-R

### LR REDS:

Crimson-LR

### GRAYS:

Silver Stone™



## DREW 1631

Make a bold statement with this "edgy" look created using an overall point-cut layering technique.

Color Shown:  
Creamy Toffee-R

Cap: Machine-Made  
Fringe: 2.8" (7 cm)  
Crown: 3.4" (8.5 cm)  
Nape: 2.4" (6 cm)  
Weight: 2.3 oz (66 g)

### AVAILABLE COLORS:

**BRUNETTES:**  
Cappucino  
Dark Chocolate  
Ginger Brown  
Marble Brown

### HYBRANT BRUNETTES:

Chocolate Frost-R  
Iced Mocha-R  
Maple Sugar-R

### BLONDS:

Harvest Gold  
Frosti Blond  
Strawberry Swirl  
Spring Honey  
Creamy Blond

### HYBRANT BLONDS:

Mocha-H  
Mochaccino-R  
Nutmeg-F  
Creamy Toffee-R  
Champagne-R

### REDS:

Burgundy Rosa  
Chestnut

### HYBRANT REDS:

Razberry Ice-R  
Copper Glaze-R

### GRAYS:

Sandy Silver™  
Silver Stone™





## ELLIOT 1709

This long tousled style with layered bangs will have you looking beautiful and stylish effortlessly.

Color Shown:  
Deep Smoky Brown (main)  
Melted Plum (inset)

Cap: Machine-Made  
Fringe: 3.93" (10cm)  
Crown: 9.84" (25cm)  
Nape: 14.17" (36cm)  
Weight: 3.98 oz (113g)

**AVAILABLE COLORS:**  
**BRUNETTES:**  
Deep Smoky Brown  
Ginger Brown

**HYBRANT BRUNETTES:**  
Marble Brown-R  
Coffee Latte  
Honey Brown-R

**HYBRANT BLONDS:**  
Champagne- R  
Creamy Toffee-R  
Mochaccino-R

**REDS:**  
Mulberry Brown

**HYBRANT REDS:**  
Razberry Ice-R

**HYBRANT PASTELS:**  
Illumina-R

**MELTED:**  
Melted Plum  
Melted Marshmallow

**GRAYS:**  
Platinum Pearl  
Smoky Gray-R





## EVA 1672

This tightly tapered, inverted bob has soft, top layers that fall into a side-swept fringe.

**Color Shown:**  
Sandy Silver

**Cap:** Machine-Made  
**Fringe:** 5.1" (13 cm)  
**Crown:** 4.5" (11.5 cm)  
**Nape:** 2" (5 cm)  
**Weight:** 2.15 oz (61 g)

**AVAILABLE COLORS:**  
**BRUNETTES:**  
Dark Chocolate  
Ginger Brown  
Marble Brown

**HYBRANT BRUNETTES:**  
Coffee Latte-R  
Iced Mocha-R

**BLONDS:**  
Spring Honey  
Creamy Blond

**HYBRANT BLONDS:**  
Mochaccino-R  
Honey Wheat-R  
Nutmeg-R  
Sugar Cane-R  
Creamy Toffee-R

**HYBRANT REDS:**  
Almond Spice-R  
Irish Spice-R

**GRAYS:**  
Midnite Pearl  
Sandy Silver™  
Silver Stone™







## HAILEY 1680

This slightly longer graduated bob has subtle layers in the front.

Color Shown:  
Champagne-R

Cap: Machine-Made  
Fringe: 7.1" (18 cm)  
Crown: 8.3" (21 cm)  
Nape: 2.4" (6 cm)  
Weight: 4.2 oz (120 g)

### AVAILABLE COLORS:

**BRUNETTES:**  
Chocolate Lava  
Dark Chocolate  
Java Frost  
Ginger Brown  
Marble Brown

### HYBRANT BRUNETTES:

Coffee Latte-R  
Chocolate Frost-R  
Almond Rocka-R  
Maple Sugar-R

### BLONDS:

Creamy Blond

### HYBRANT BLONDS:

Honey Wheat-R  
Sugar Cane-R  
Creamy Toffee-R  
Champagne-R

### REDS:

Garnet Glaze



## IVY 1679

Edgy, page-boy style is cut with a round, heavy fringe.

Color Shown:  
Chocolate Frost-R

Cap: Machine-Made  
Fringe: 3.7" (9.5 cm)  
Crown: 4.7" (12 cm)  
Nape: 2" (5 cm)  
Weight: 2.29 oz (65 g)

### AVAILABLE COLORS:

**BRUNETTES:**  
Dark Chocolate  
Ginger Brown  
Marble Brown

### HYBRANT BRUNETTES:

Coffee Latte-R  
Chocolate Frost-R  
Almond Rocka-R  
Iced Mocha-R

### BLONDS:

Spring Honey  
Creamy Blond  
Platinum Pearl

### HYBRANT BLONDS:

Mochaccino-R  
Nutmeg-R  
Sugar Cane-R  
Creamy Toffee-R  
Champagne-R

### REDS:

Chestnut

### HYBRANT REDS:

Auburn Sugar-R

### GRAYS:

Sandy Silver™  
Silver Stone™





## JACKSON 1669

This sleek, shoulder length style features flattering, face-framing layers.

Color Shown:  
Chocolate Swirl

Cap: Machine-Made  
Fringe: 6.9" (17.5 cm)  
Crown: 9.1" (23 cm)  
Nape: 8.3" (21 cm)  
Weight: 4.27 oz (121 g)

### AVAILABLE COLORS: BRUNETTES:

Expresso  
Cappucino  
Dark Chocolate  
Chocolate Swirl  
Java Frost  
Ginger Brown  
Marble Brown  
Toasted Brown

### HYBRANT BRUNETTES:

Chocolate Frost-R  
Almond Rocka-R  
Iced Mocha-R  
Maple Sugar-R

### BLONDS:

Strawberry Swirl  
Spring Honey  
Creamy Blond

### HYBRANT BLONDS:

Butter Pecan-R  
Mochaccino-R  
Honey Wheat-R  
Nutmeg-R  
Sugar Cane-R  
Creamy Toffee-R  
Champagne-R

### REDS:

Chestnut

### HYBRANT REDS:

Cayenne Spice-R  
Auburn Sugar-R  
Razberry Ice-R  
Irish Spice-R  
Copper Glaze-R

### GRAYS:

Silver Stone™



## KATE 1668

Geometric, fringed bob is complemented by razor-finished tiers and arched ends.

Color Shown:  
Creamy Blond

Cap: Machine-Made  
Fringe: 5.9" (15 cm)  
Crown: 4.7" (12 cm)  
Nape: 3.5" (9 cm)  
Weight: 2.54 oz (72 g)

### AVAILABLE COLORS: BRUNETTES:

Dark Chocolate  
Chocolate Swirl  
Java Frost  
Marble Brown

### HYBRANT BRUNETTES:

Chocolate Frost-R  
Iced Mocha-R  
Maple Sugar-R

### BLONDS:

Creamy Blond

### HYBRANT BLONDS:

Butter Pecan-R  
Mochaccino-R  
Nutmeg-R  
Creamy Toffee-R  
Champagne-R

### REDS:

Ginger Highlight  
Chestnut

### HYBRANT

### REDS:

Almond Spice-R  
Razberry Ice-R  
Irish Spice-R

### GRAYS:

Sandy Silver™





## LEXY 1642

Carefree layered cut with whimsical, flipped ends.

Color Shown:  
Terracotta-H

Cap: Machine-Made  
Fringe: 3.9" (10 cm)  
Crown: 4.3" (11 cm)  
Nape: 4.7" (12 cm)  
Weight: 2.86 oz (81 g)

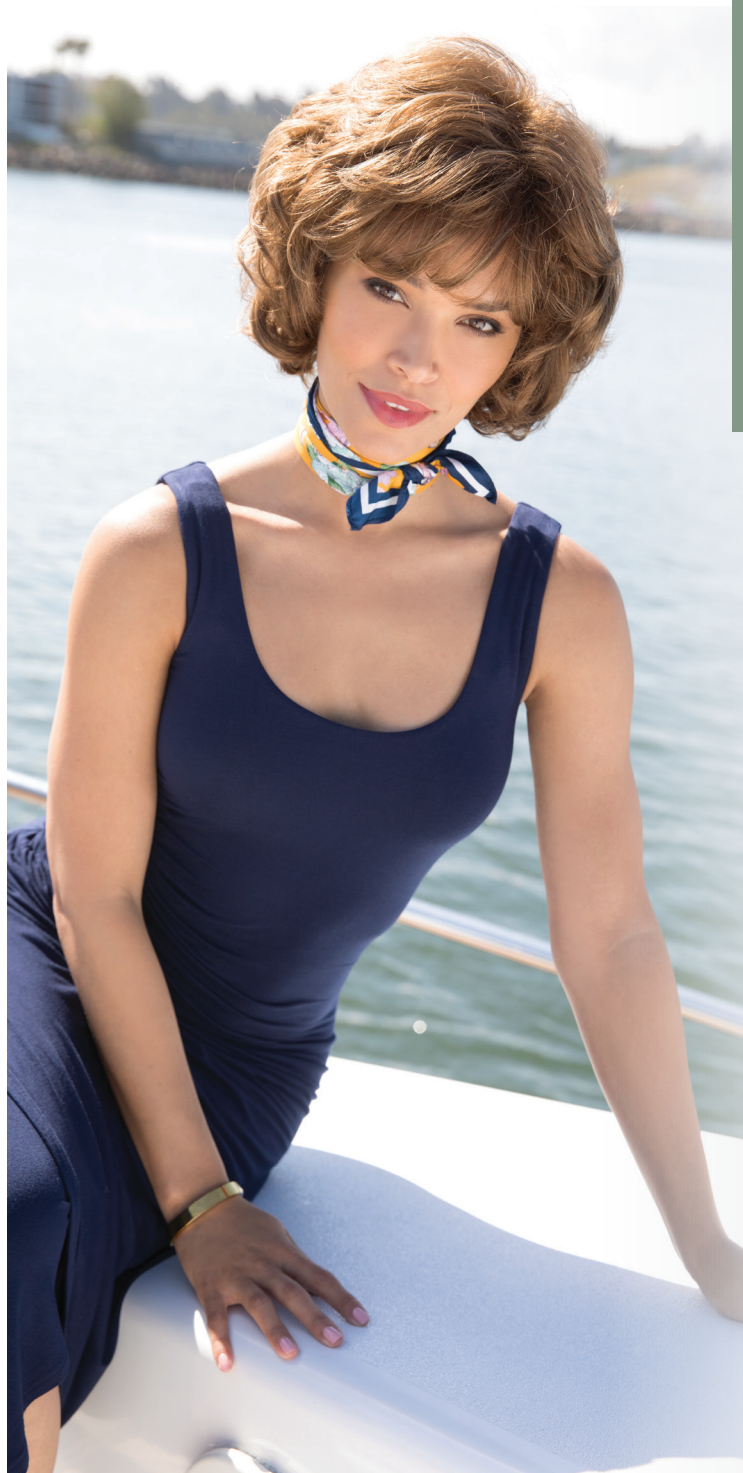
**AVAILABLE COLORS:**  
**BRUNETTES:**  
Dark Chocolate  
Ginger Brown  
Marble Brown  
Toasted Brown

**BLONDS:**  
Harvest Gold  
Strawberry Swirl  
Spring Honey  
Creamy Blond

**HYBRANT BLONDS:**  
Mocha-H  
Nutmeg-F  
Sandalwood-H  
Champagne-R

**REDS:**  
Chestnut

**HYBRANT REDS:**  
Raisin Glaze-H  
Terracotta-H



## MARIAH 1613

Soft, tousled curls frame this chin-length bob.

Color Shown:  
Light Chocolate

Cap: Machine-Made  
Fringe: 4.1" (10.5 cm)  
Crown: 4.9" (12.5 cm)  
Nape: 4.3" (11 cm)  
Weight: 3.21 oz (91 g)

**AVAILABLE COLORS:**  
**BRUNETTES:**  
Cappucino  
Dark Chocolate  
Ginger Brown  
Marble Brown  
Medium Brown  
Light Chocolate

**BLONDS:**  
Harvest Gold  
Sandy Blond  
Vanilla Lush  
Spring Honey  
Gold Blond  
Creamy Blond

**REDS:**  
Chestnut  
Dark Rust





## MASON 1632

Mixed layers with beveled ends gives this style attitude and a sophisticated "kick".

Color Shown:  
Ginger Brown

Cap: Machine-Made  
Fringe: 2.4" (6 cm)  
Crown: 3" (7.5 cm)  
Nape: 1.6" (4 cm)  
Weight: 2.61 oz (74 g)

### AVAILABLE COLORS:

**BRUNETTES:**  
Dark Chocolate  
Chocolate Swirl  
Ginger Brown  
Marble Brown  
Medium Brown  
Pecan Brown

### HYBRANT BRUNETTES:

Iced Mocha-R  
Maple Sugar-R

### BLONDS:

Harvest Gold  
Frosti Blond  
Strawberry Swirl  
Vanilla Lush  
Caramel Cream  
Spring Honey  
Creamy Blond

### HYBRANT BLONDS:

Mochaccino-R  
Nutmeg-F  
Creamy Toffee-R  
Sandalwood-H  
Champagne-R

### REDS:

Burgundy Rosa  
Chestnut

### HYBRANT REDS:

Almond Spice-R  
Razberry Ice-R  
Copper Glaze-R

### GRAYS:

Silver Stone™



# MAY 1673

Elegantly relaxed bob has a wispy perimeter and feathery-swept sides.



Color Shown:  
Garnet Glaze

Cap: Machine-Made  
Fringe: 7" (18 cm)  
Crown: 9" (23 cm)  
Nape: 3.9" (10 cm)  
Weight: 3.63 oz (103 g)

**AVAILABLE COLORS:**

**BRUNETTES:**  
Cappucino  
Dark Chocolate  
Java Frost  
Marble Brown

**HYBRANT BRUNETTES:**

Coffee Latte-R  
Chocolate Frost-R  
Almond Rocka-R  
Iced Mocha-R  
Maple Sugar-R

**HYBRANT BLONDS:**

Butter Pecan-R  
Mochaccino-R  
Honey Wheat-R  
Nutmeg-R  
Sugar Cane-R  
Creamy Toffee-R  
Champagne-R

**BLONDS:**

Spring Honey  
Creamy Blond

**REDS:**

Garnet Glaze

**HYBRANT REDS:**

Cayenne Spice-R  
Razberry Ice-R





## MEGAN 1607

This semi-wedge bob tapers in the back.

Color Shown:  
Spring Honey

Cap: Machine-Made  
Fringe: 4.5" (11.5 cm)  
Crown: 4.9" (12.5 cm)  
Nape: 2.2" (5.5 cm)  
Weight: 2.68 oz (76 g)

**AVAILABLE COLORS:**  
**BRUNETTES:**

Cappucino  
Dark Chocolate  
Ginger Brown  
Marble Brown  
Toasted Brown  
Medium Brown

**BLONDS:**

Harvest Gold  
Sunny Blond  
Frosti Blond  
Strawberry Swirl  
Vanilla Lush  
Caramel Cream  
Spring Honey  
Creamy Blond

**REDS:**  
Chestnut

**GRAYS:**

Sandy Silver™  
Silver Stone™



## MILLIE 1655

A classic style with a modern twist. The exaggerated, wispy neckline and point-specific layers are designed to highlight the cheekbones and open up the face.

Color Shown:  
Creamy Toffee-R

Cap: Machine-Made  
Fringe: 3.7" (9.5 cm)  
Crown: 4.7" (12 cm)  
Nape: 4.7" (12 cm)  
Weight: 2.5 oz (71 g)

**AVAILABLE COLORS:**

**BRUNETTES:**

Cappucino  
Dark Chocolate  
Chocolate Swirl  
Ginger Brown  
Marble Brown  
Toasted Brown

**HYBRANT BRUNETTES:**

Iced Mocha-R  
Maple Sugar-R

**BLONDS:**

Creamy Blond

**HYBRANT BLONDS:**

Mochaccino-R  
Nutmeg-F  
Creamy Toffee-R  
Champagne-R

**REDS:**

Chestnut

**HYBRANT REDS:**

Almond Spice-R  
Auburn Sugar-R  
Raspberry Ice-R

**GRAYS:**

Midnite Pearl  
Silver Stone™





## NIMA 1713

Tapered, short bob with natural body creates timeless charm. Soft layers frame the faceline beautifully.

Color Shown:  
Coffee Latte (main)  
Simply White (inset)

Cap: Feather Light Machine-Made  
Fringe: 3.9-5.5" (10-14cm)  
Crown: 7.1" (18cm)  
Nape: 2" (5cm)  
Weight: 2.8-2.9oz (78-83g)

### AVAILABLE COLORS:

#### BRUNETTES:

Cappucino  
Dark Chocolate  
Medium Brown  
Deep Smoky Brown  
Ginger Brown

#### HYBRANT BRUNETTES:

Coffee Latte  
Marble Brown-R  
Iced Mocha-R  
Honey Brown-R

**BLONDS:**  
Creamy Blond  
Frosti Blond  
Sugar Cane  
Peach Gold

#### HYBRANT BLONDS:

Champagne-R  
Spring Honey-R  
Creamy Toffee-R  
Nutmeg-F

**REDS:**  
Red Brown  
Chestnut

**HYBRANT REDS:**  
Razberry Ice-R

**LR BRUNETTES:**  
Kandy Brown-LR

**GRAYS:**  
Silver Stone  
Simply White

**HYBRANT GRAYS:**  
Moonstone







Color Shown:  
Sugar Cane-R

Cap: Machine-Made  
Fringe: 3.5" (9 cm)  
Crown: 4.7" (12 cm)  
Nape: 3.1" (8 cm)  
Weight: 2.6 oz (73 g)

**AVAILABLE COLORS:**

**BRUNETTES:**  
Chocolate Swirl  
Ginger Brown  
Marble Brown

**HYBRANT BRUNETTES:**

Coffee Latte-R  
Chocolate Frost-R  
Almond Rocka-R  
Iced Mocha-R  
Maple Sugar-R

**BLONDS:**

Spring Honey

**HYBRANT BLONDS:**

Mochaccino-R  
Nutmeg-R  
Sugar Cane-R  
Creamy Toffee-R  
Champagne-R

**REDS:**

Chestnut

**HYBRANT REDS:**

Razberry Ice-R  
Copper Glaze-R

**GRAYS:**

Silver Stone™

## NORI 1682

A short and shaggy style with razored, textured fringe and nape.







## PAM 1606

A basic short cut with feathered layers.

**Color Shown:**  
Harvest Gold

**Cap:** Machine-Made  
**Fringe:** 2.4" (6 cm)  
**Crown:** 3.1" (8 cm)  
**Nape:** 1.6" (4 cm)  
**Weight:** 2.1 oz (59 g)

**AVAILABLE COLORS:**  
**BRUNETTES:**  
Dark Chocolate  
Ginger Brown  
Marble Brown  
Medium Brown  
Golden Brown  
Light Chocolate

**BLONDS:**  
Harvest Gold  
Frosti Blond  
Strawberry Swirl  
Spring Honey  
Gold Blond  
Creamy Blond

**REDS:**  
Chestnut

**GRAYS:**  
Silver Stone™  
38  
51  
56





## REESE 1660

This sassy bob has tousled layers and an edgy fringe.

Color Shown:  
Almond Spice-R

Cap: Machine-Made  
Fringe: 5" (12.5 cm)  
Crown: 5.9" (15 cm)  
Nape: 3.9" (10 cm)  
Weight: 2.89 oz (82 g)



**AVAILABLE COLORS:**  
**BRUNETTES:**

Espresso  
Cappucino  
Dark Chocolate  
Chocolate Swirl  
Ginger Brown  
Marble Brown  
Toasted Brown

**HYBRANT BRUNETTES:**

Chocolate Frost-R  
Iced Mocha-R  
Maple Sugar-R

**BLONDS:**

Harvest Gold  
Strawberry Swirl  
Vanilla Lush  
Spring Honey  
Creamy Blond

**HYBRANT BLONDS:**

Butter Pecan-R  
Mocha-H  
Mochaccino-R  
Nutmeg-F  
Creamy Toast  
Creamy Toffee-R  
Sandalwood-H  
Champagne-R

**REDS:**

Red Pepper  
Ginger Highlight  
Chestnut

**HYBRANT REDS:**

Raisin Glaze-H  
Almond Spice-R  
Auburn Sugar-R  
Razberry Ice-R  
Irish Spice-R  
Copper Glaze-R

**GRAYS:**

Sandy Silver™  
Silver Stone™





## ROBIN 1639

Stunning! The graduated, interior layers create a soft silhouette with maximum movement.

**Color Shown:**  
Dark Chocolate

**Cap:** Machine-Made  
**Fringe:** 4.3" (11 cm)  
**Crown:** 17.5" (44.5 cm)  
**Nape:** 17.3" (44 cm)  
**Overall:** 25" (63.5 cm)  
**Weight:** 5.11 oz (145 g)

**AVAILABLE COLORS:**  
**BRUNETTES:**

Espresso  
Cappucino  
Dark Chocolate  
Chocolate Swirl  
Ginger Brown  
Marble Brown  
Toasted Brown  
Light Chocolate  
Pecan Brown

**BLONDS:**

Harvest Gold  
Vanilla Lush  
Caramel Cream  
Spring Honey  
Creamy Blond

**HYBRANT BLONDS:**

Nutmeg-F  
Sandalwood-H  
Champagne-R

**REDS:**

Burgundy Rosa  
Chestnut

**HYBRANT REDS:**

Almond Spice-R

## RONI 1641

Maximized volume! This bold, multi-layered style is full of texture and hugs the nape with tapered edges.

**Color Shown:** Burgundy Rosa

**Cap:** Machine-Made  
**Fringe:** 4.5" (11.5 cm)  
**Crown:** 4.3" (11 cm)  
**Nape:** 2" (5 cm)  
**Weight:** 2.36 oz (67 g)

**AVAILABLE COLORS:**

**BRUNETTES:**

Cappucino  
Marble Brown  
Ginger Brown

**BLONDS:**

Harvest Gold  
Frosti Blond  
Strawberry Swirl  
Vanilla Lush  
Caramel Cream  
Spring Honey

**REDS:**

Burgundy Rosa  
Paprika-R  
Chestnut







## SALLY 1616

Short layers and a soft fringe frame the face while a tapered back hugs the nape.

**Color Shown:**  
Toasted Brown

**Cap:** Machine-Made  
**Fringe:** 3.9" (10 cm)  
**Crown:** 4.9" (12.5 cm)  
**Nape:** 2.4" (6 cm)  
**Weight:** 2.7 oz (77 g)

**AVAILABLE COLORS:**  
**BRUNETTES:**

Cappuccino  
Dark Chocolate  
Ginger Brown  
Marble Brown  
Toasted Brown  
Medium Brown  
Light Chocolate

**BLONDS:**  
Frosti Blond  
Strawberry Swirl  
Vanilla Lush  
Spring Honey  
Gold Blond  
Creamy Blond

**REDS:**  
Chestnut

**GRAYS:**  
Silver Stone™





## SANDIE 1648

This textured bob  
has a tousled finish.

Color Shown:  
Midnite Pearl

Cap: Machine-Made  
Fringe: 5.1" (13 cm)  
Crown: 6.3" (16 cm)  
Nape: 3.5" (9 cm)  
Weight: 2.75 oz (78 g)

### AVAILABLE COLORS: BRUNETTES:

Espresso  
Dark Chocolate  
Ginger Brown  
Marble Brown  
Toasted Brown  
Pecan Brown

### HYBRANT BRUNETTES:

Iced Mocha-R  
Maple Sugar-R

### BLONDS:

Harvest Gold  
Strawberry Swirl  
Spring Honey  
Creamy Blond

### HYBRANT BLONDS:

Mocha-H  
Mochaccino-R  
Nutmeg-F  
Creamy Toffee-R  
Sandalwood-H  
Champagne-R

### REDS:

Ginger Highlight  
Chestnut

### HYBRANT REDS:

Auburn Sugar-R

### GRAYS:

Midnite Pearl  
Silver Stone™





# SEVILLE 1685

Classic, medium-length style features a subtle a-line perimeter and square layers.



**Color Shown:**  
Banana Split-LR

**Cap:** Machine-Made  
**Fringe:** 5.1" (13 cm)  
**Crown:** 10.6" (27 cm)  
**Nape:** 9.8" (25 cm)  
**Weight:** 5.43 oz (154 g)

**AVAILABLE COLORS:**  
**BRUNETTES:**  
Dark Chocolate  
Chocolate Swirl  
Ginger Brown  
Marble Brown

**HYBRANT BRUNETTES:**  
Coffee Latte-R  
Almond Rocka-R  
Iced Mocha-R  
Maple Sugar-R

**BLONDS:**  
Spring Honey  
Creamy Blond

**HYBRANT BLONDS:**  
Butter Pecan-R  
Mochaccino-R  
Nutmeg-R  
Creamy Toffee-R

**LR BLONDS:**  
Banana Split-LR  
Macadamia-LR

**HYBRANT REDS:**  
Irish Spice-R  
Copper Glaze-R

**LR REDS:**  
Crimson-LR





## SKY 1649

A wispy voluminous bob with soft, feathery layers.

Color Shown:  
Ginger Highlight

Cap: Machine-Made  
Fringe: 5.5" (14 cm)  
Crown: 5.1" (13 cm)  
Nape: 3.5" (9 cm)  
Weight: 2.79 oz (79 g)

**AVAILABLE COLORS:**  
**BRUNETTES:**  
Espresso  
Cappuccino  
Dark Chocolate  
Chocolate Swirl  
Ginger Brown  
Marble Brown  
Toasted Brown  
Medium Brown  
Pecan Brown

**HYBRANT BRUNETTES:**  
Coffee Latte-R  
Almond Rocka-R  
Iced Mocha-R  
Maple Sugar-R

**BLONDS:**  
Harvest Gold  
Frosti Blond  
Strawberry Swirl  
Vanilla Lush  
Caramel Cream  
Spring Honey  
Gold Blond  
Creamy Blond

**HYBRANT BLONDS:**  
Butter Pecan-R  
Mocha-H  
Mochaccino-R  
Honey Wheat-R  
Nutmeg-F  
Sugar Cane-R  
Creamy Toffee-R  
Sandalwood-H  
Champagne-R

**REDS:**  
Burgundy Rosa  
Red Pepper  
Ginger Highlight  
Bronzed Brown  
Chestnut  
Dark Rust

**HYBRANT REDS:**  
Raisin Glaze-H  
Terracotta-H  
Almond Spice-R  
Auburn Sugar-R  
Razberry Ice-R  
Copper Glaze-R

**GRAYS:**  
Midnite Pearl  
Sandy Silver™  
Silver Stone™



# MALIBU

## 1716

Stunning, long-layered hair enhancement with side swept fringe. Naturally tapered ends are sure to blend in well.

Color Shown:  
Melted Marshmallow (main)  
Dark Chocolate (inset)

Cap: Monofilament Cap  
Fringe: 5.9" (15 cm)  
Crown: 9.4" (24 cm)  
Weight: 3.2 - 3.4 oz (90-95 g)

### AVAILABLE COLORS:

#### BRUNETTES:

Espresso  
Cappuccino  
Dark Chocolate  
Ginger Brown

#### HYBRANT BRUNETTES:

Marble Brown-R

#### BLONDS:

Creamy Blond  
Spring Honey

#### HYBRANT BLONDS:

Coffee Latte  
Champagne-R  
Creamy Toffee-R  
Mochaccino-R  
Nutmeg-F  
Sugar Cane-R

#### REDS:

Chestnut

#### LR BRUNETTES:

Kandy Brown-LR

#### MELTED:

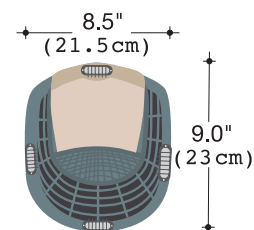
Melted Marshmallow

#### GRAYS:

Silver Stone  
Simply White

#### HYBRANT GRAYS:

Moonstone







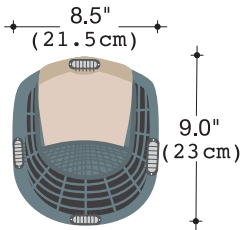
# MILAN 1658

An innovative hair enhancement that adds length and smooth face framing layers.

Color Shown:  
Creamy Toffee **NEW!**  
Base: Monofilament Top  
Fringe: 8.5" (21.5 cm)  
Crown: 14" (35.5 cm)  
Nape: 13.5" (34.3 cm)  
Weight: 4 oz (115 g)

- AVAILABLE COLORS:**  
**BRUNETTES:**  
Espresso  
Cappucino  
Dark Chocolate  
Chocolate Swirl  
Ginger Brown  
Marble Brown  
Toasted Brown  
**BLONDS:**  
Spring Honey  
Creamy Blond  
Creamy Toffee

- HYBRANT BLONDS:**  
Nutmeg-F  
Creamy Toast  
Champagne-R  
**REDS:**  
Chestnut  
**HYBRANT REDS:**  
Almond Spice-R





# ACCESSORIES

## DISPLAY MANNEQUINS



8123  
21" MANNEQUIN



8119  
17" MANNEQUIN



9580 WIG CAP  
Available Colors:  
Beige, Black, and Brown

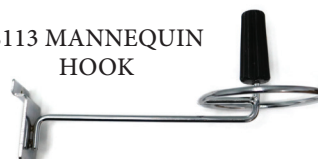


9581 WIG LINER  
OPEN MESH  
Available Colors:  
Beige, Black, and Brown



9584  
ROP WIG STAND

8113 MANNEQUIN  
HOOK



9586  
BULK BEIGE  
WIG CAP  
(Sold in 12 pcs)



8128  
18" WHITE  
MANNEQUIN  
NO LOGO



8129  
18" GRAY  
MANNEQUIN  
WITH LOGO



8130  
18" BLACK  
MANNEQUIN  
WITH LOGO



8131  
18" WHITE  
MANNEQUIN  
WITH LOGO



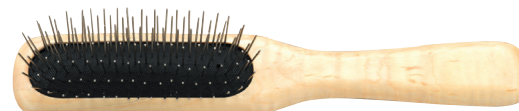
9585  
SILVER COMB CLIP  
(Sold in 12 pcs)

9582  
WIG STAND  
PACKAGE  
(3pc package contains  
colors: Black, Blue & Gray)

Sold separately:  
9583  
BLACK  
BLUE  
GRAY



Convenient "snap together" stand  
for wig storage or service.



965  
WIRE BRUSH



9587  
ROP WIG LIFT COMB



9591  
ROP FOLDING BRUSH

9511  
SWATCHES

The color swatches  
let you see your  
perfect hair match.







**ROP  
SHAMPOO**  
9950 | 8 oz.  
9954 | 2 oz.

**ROP LIGHT  
CONDITIONER**  
9953 | 8 oz.  
9955 | 2 oz.

**ROP REVIVE  
LIQUID  
ENHANCEMENT**  
9951 | 8 oz.

**ROP PROTECT  
HOLDING SPRAY**  
9952 | 8 oz.  
9956 | 2 oz.

## RENÉ of PARIS MAINTENANCE TOOLS

### RENE OF PARIS PREPARE SHAMPOO

This luxurious shampoo is formulated with the ultimate in moisture replenishing cleansers. The René of Paris™ Prepare Shampoo helps maintain the smoothness, strength and polish of your hair.

The gentle combination of plant and vegetable extracts, along with natural essential oils and vitamins, provides a gentle but thorough cleansing of your hair. The results will revolutionize how you feel in your hair.

### RENE OF PARIS REVIVE LIQUID ENHANCEMENT

The finest advanced liquid developed for synthetic fiber hair. The René of Paris™ Revive Liquid Enhancement will revive your hair and give it the brand new feel.

Not only helps eliminate frizz while adding luster, texture and volume, but also protects your hair from the daily stresses.

### RENE OF PARIS PROTECT HOLDING SPRAY

The final stop in maintaining and styling your hair. This holding spray adds shine while gently, yet firmly, holding your desired style.

We are delighted that you have chosen to become one of our valued customers. We appreciate your business as well as any inquiries regarding the following:

#### APPLICABILITY:

1. The following terms and conditions ("Terms") are the only terms which govern the sale of the goods ("Goods") by Aderans Hair Goods, Inc. ("AHG") to its customers (each referred to hereafter as "Buyer," or "You"). Notwithstanding anything herein to the contrary, if a written contract signed by both parties is in existence covering the sale of the Goods covered hereby, the terms and conditions of said contract shall prevail to the extent they are inconsistent with these Terms.
2. These Terms, together with the applicable invoice and the Statement of Policy defined below (collectively, this "Agreement"), comprise the entire agreement between the parties, and supersede all prior or contemporaneous understandings, agreements, negotiations, representations and warranties, and communications, both written and oral. These Terms prevail over any of Buyer's general terms and conditions of purchase regardless whether or when Buyer has submitted its purchase order or such terms. Acceptance of Buyer's purchase order or fulfillment of Buyer's order does not constitute acceptance of any of Buyer's terms and conditions and does not serve to modify or amend these Terms.

**ACCEPTANCE OF PURCHASE ORDER.** AHG has the right, in its sole discretion, to accept or reject any purchase order issued by You. AHG may accept any purchase order by confirming the order (whether by written confirmation, invoice or otherwise) or by delivering the Goods, whichever occurs first. No purchase order is binding on AHG unless accepted by AHG.

**PRICES.** You shall purchase the Goods from AHG at the prices set forth in AHG's price list in effect at the time that AHG accepts Your purchase order ("Prices"). Prices are exclusive of, and You are solely responsible for, and shall pay, any and all taxes, with respect to, or measured by, the manufacture, sale, shipment, use or Price of the Goods; provided, however, that You shall not be responsible for any taxes imposed on, or with respect to, AHG's income, revenues, gross receipts, personnel or real or personal property or other assets.

**PAYMENT TERMS:** AHG accepts payment by Visa, MasterCard, AMEX, Discover, money order, wire transfer and COD. Upon approval, credit terms may be available.

**CREDIT PURCHASES:** If You wish to apply for an AHG 30-day open account (NET -30), contact Your AHG sales representative and request a credit application.

**SHIPPING/HANDLING:** You will pay for all shipping charges and insurance costs. AHG offers shipping via UPS next day air, 2-3 day air, and ground. There is a handling charge of \$1.00 for all orders. For each purchase order accepted by AHG, AHG may, in its sole discretion, without liability or penalty, make partial shipments of Goods to You. Each shipment will constitute a separate sale and You will pay for the units shipped whether such shipment is in whole or partial fulfillment of a purchase order.

**TRANSFER OF TITLE & RISK OF LOSS:** Title passes to You upon delivery of the Goods to the

address You specified in the purchase order. Risk of loss or damage to the Goods passes to You upon AHG's tender of such units to the carrier at AHG's location in Chatsworth, CA.

**STATEMENT OF POLICY:** You must comply with the Statement of Policy and Guidelines for Using Aderans' Trademarks and Copyrights (the "Statement of Policy") which was provided to You and which may be modified or updated by AHG from time to time in its sole discretion.

**RETURN POLICY:** Returns will not be accepted unless pre-authorized by (AHG). Requests must be made within 30 days from receipt of goods. Upon approval and receipt of the authorization for return label, Goods meeting the following conditions may be returned for an exchange or direct credit to Your account (freight prepaid by Buyer). NO cash refunds! If an item is to be exchanged, new shipping and handling charges will be added.

1. A copy of Your invoice must accompany all returns. The authorization for return label must be placed on the outside of the box (complete with the authorization number) and Your return address. If not, the box will be refused.
2. Returned Goods must be in MINT CONDITION. Mint condition is defined by AHG as: no missing tags or labels, the hair net is not removed, item(s) are not combed/fluffed or tried on by a customer. All returns must be in original shipping box. There is a restocking fee of \$10.00 for EACH piece returned.
3. AHG has carefully designed its product packaging to protect the product integrity. AHG is not responsible for damage to or problems with any product where the product and/or shipment packaging has been changed per Your request. No returns will be accepted under these conditions.
4. Shipping and handling fees are non-refundable.
5. Any DISCONTINUED items are not returnable.
6. AHG is not responsible for lost return packages.

It is recommended that You keep proper Proof-of-Delivery. Goods not meeting the above stipulations will be refused. AHG will not accept returns more than 30 days after receipt of Goods. If there is a factory defect or an incorrectly shipped item due to our error, a full exchange or credit will be applied directly to Your account. Note: If an item is returned for a "defective" credit and upon examination found not to be defective, credit will only be given for the item's original price (providing it still meets the above standards), and a \$10.00 restocking charge will be applied. Any additional product not authorized for return will be sent back.

**NOTE:** Colors shown in this catalog may not reflect actual color of product.

RENÉ OF PARIS, NORIKO, and NORIKO COLLECTION are trademarks or registered trademarks of Aderans Hair Goods, Inc. and/or Aderans Co., Ltd. in the United States and other countries.



Distributed by  
**RENÉ of PARIS**  
division of Aderans Hair Goods, Inc.

9135 Independence Ave.  
Chatsworth, CA 91311 USA  
Toll Free: 800.353.7363  
Fax: 424.239.1451

Front Cover Style Shown: Harlee in Spring Honey-T  
Back Cover Style Shown: Zane in Chocolate Frost-R

[www.reneofparis.com](http://www.reneofparis.com)

FOLLOW US ON:



NORIKO CATALOG 2021/2022



2110931