



# AMORE™

COLLECTION 2024



## EXQUISITE STYLE MEETS UNPARALLELED QUALITY

The 2024 Amore Collection celebrates individuality and empowers you to express your true self. Embrace the transformative power of these new styles and colors, and let your inner beauty shine through. Elevate your beauty and embrace limitless possibilities with the 2024 Amore Collection - a collection that allows you to be authentically and beautifully you.

Experience the sheer luxury and authenticity of **Oakly and Darra**, our two remarkable human hair wigs. Crafted with meticulous attention to detail, Oakly and Darra offer the most natural look and feel. Choose from a range of captivating colors, including **natural blond root, highlighted brown root, highlighted blond root, medium natural brown, and frost**, to effortlessly enhance your unique style and showcase your true self.

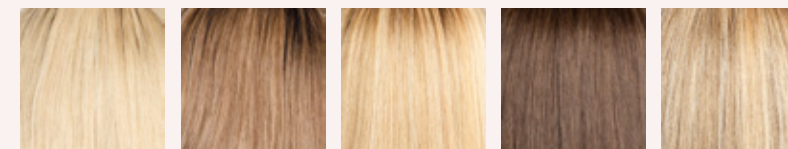
For those seeking convenience without compromising on style, we present **Glenn and Findley**, our two sensational synthetic wigs. These wigs are expertly crafted using high-quality synthetic fibers, ensuring a realistic appearance that requires minimal maintenance.

Discover the new colors, **Cherry Brown R, NM Cherry Brown R, Melted Caramel, NM Melted Caramel, and Chocolate Twist R, NM Truffle Brown LR**, that will add a touch of elegance and versatility to these already breathtaking styles.

To complete your look, we offer the **Long Top Piece Mono LG**, a versatile top piece that adds volume and length to your existing style. Designed with precision and made to seamlessly blend with your natural hair, this top piece is a game-changer.

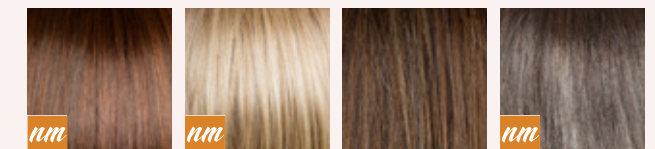
## NEW COLORS

### AMORE™ REMY HUMAN HAIR\*



Natural Blond Root    Highlighted Brown Root    Highlighted Blond Root    Medium Natural Brown    Frost

### NM and SYNTHETIC



Cherry Brown-R    NM Cherry Brown-R    Melted Caramel/ NM Melted Caramel    Chocolate Twist-R    NM Truffle Brown -R/-LR



**NEW!**  
**DARRA**  
8715  
pp 10-13



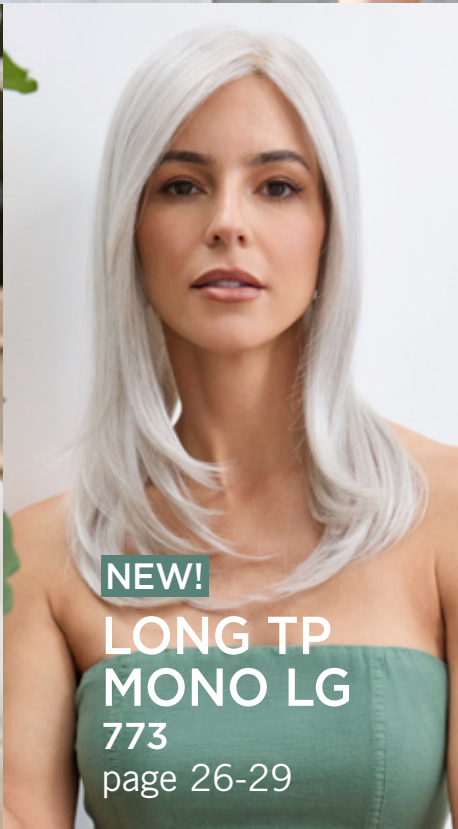
**NEW!**  
**FINDLEY**  
2587  
pp 18-21



**NEW!**  
**OAKLY**  
8716  
page 14-17



**NEW!**  
**GLENN**  
2586  
page 22-25



**NEW!**  
**LONG TP  
MONO LG**  
773  
page 26-29

XO PLUS COLLECTION		XO COLLECTION		AMORE™ COLLECTION			
31 Royce 2578	33 Codi XO 2563	35 Arden 2584	36 Bay 2585	37 Brandi 2503	38 Braylen 2581	39 Brittany 2538	40 Casey 2572

AMORE™ COLLECTION							
41 Codi 2543	42 Connie 2535	43 Emy 2576	44 Erika 2532	45 Erin 2513	46 Levy 2582	47 Sybil 2583	48 Tate 2580

AMORE™ COLLECTION						REMY HUMAN HAIR		HALO COLLECTION	
49 Samantha 2514	50 Stevie 2516	52 Tatum 2548	53 Tova 2540	54 Brielle 8711	56 Thea 8710	58 Halo Bob 736	59 ROP Halo 733		

HALO COLLECTION		REMY HUMAN HAIR TOPPERS					HAIR ENHANCEMENTS		
60 Long Halo 737	61 Wavy Bob Halo 738	62 Diamond Topper 8706	63 Remy HH Topper 14" 8708	64 Remy HH Topper 10" 8709	65 Mini Topper 8707	66 Flex TP 912	67 Pixie TP Mono 760		

HAIR ENHANCEMENTS				AMORE™ CHILDREN'S COLLECTION				
68 Luxe TP 911	69 Long TP Mono 752	70 Fringe Flair 759	71 Medium TP Mono 751	73 Addison 4208	74 Elsie 4209	75 Kensley 4207	76 Logan 4205	77 Miley 4206

**INDEX**

Available Colors . . . . .	6-9	Halo Collection . . . . .	52-55
NEW Amore™ Styles . . . . .	8-29	Remy Human Hair . . . . .	56-61
Amore™ XO Plus Collection . . . . .	30-31	Hair Enhancements . . . . .	62-67
Amore™ XO Collection . . . . .	32-33	Amore™ Children's Collection . . . . .	69-72
Amore™ Collection . . . . .	34-51	Accessories . . . . .	73-75

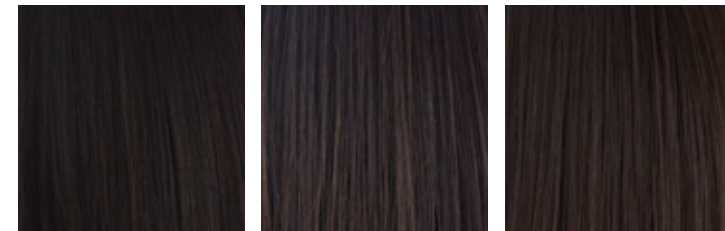
AMORE™ REMY HUMAN HAIR\*

BRUNETTES

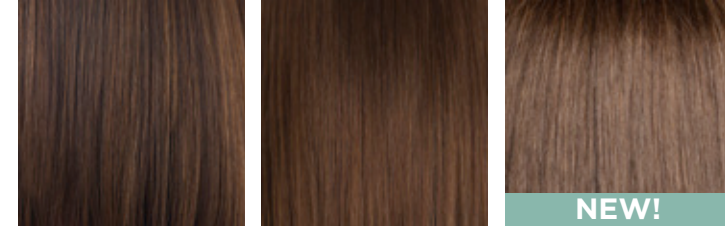
HYBRANT BRUNETTES

BLONDS

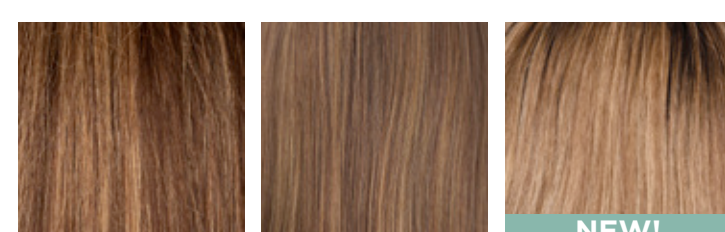
HYBRANT BLONDS



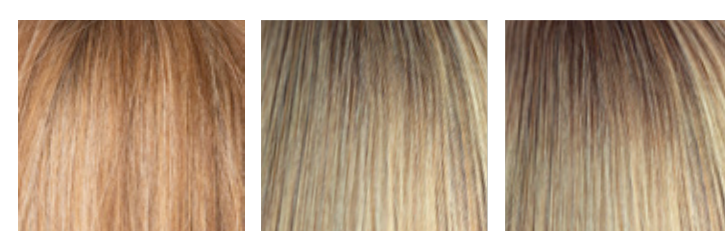
Espresso Dark Chocolate/  
NM Dark Chocolate **NEW!** Cappuccino



Toffee Brown Brown Spice **NEW!** Medium Natural Brown



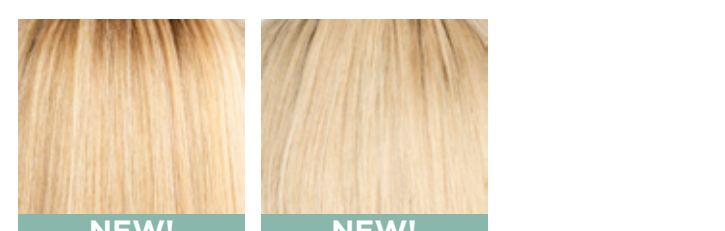
Chocolate Parfait Root Honey Brown **NEW!** Highlighted Brown Root



Hazelnut Cream Root Moonlight Blonde Root Moonlight Blond-LR



Starlight Blonde Golden Wheat **NEW!** Frost



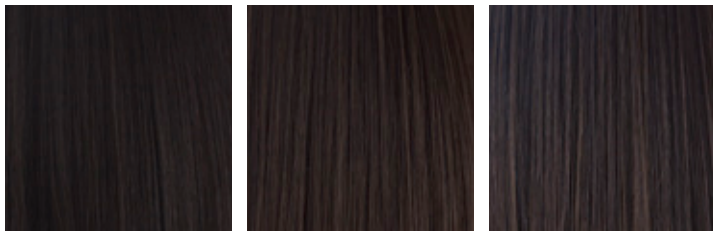
**NEW!** Highlighted Blond Root **NEW!** Natural Blond Root



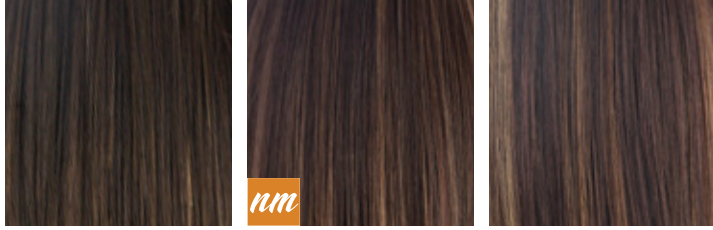
Golden Brown Almond Rocka



Maple Sugar



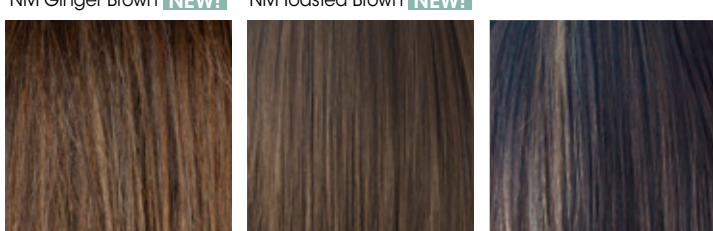
Espresso Cappuccino/  
NM Cappuccino **NEW!** Dark Chocolate



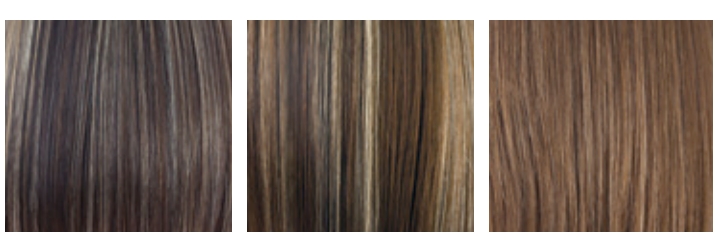
Mocha Brown **nm** Coffee Latte/  
NM Coffee Latte **NEW!** Java Frost



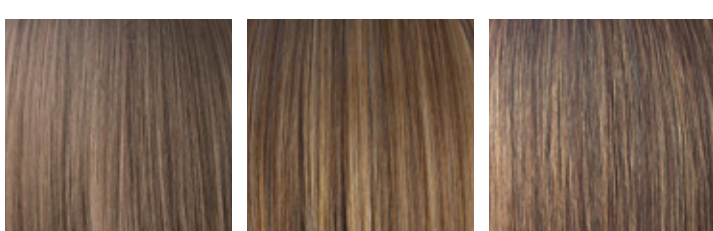
**nm** Ginger Brown/  
NM Ginger Brown **NEW!** **nm** Toasted Brown/  
NM Toasted Brown **NEW!** Kahlua Blast



Chocolate Twist Medium Brown Caramel Brown



Chocolate Frost Iced Mocha Light Chocolate



Golden Brown Almond Rocka Marble Brown



Maple Sugar



Maple Sugar



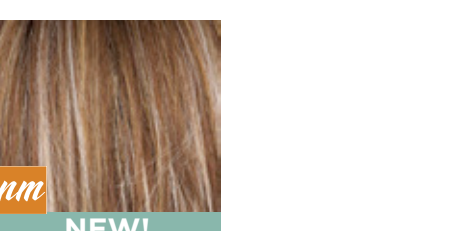
Coffee Latte-R Almond Rocka-R



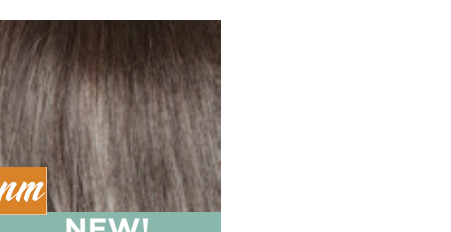
**nm** Marble Brown-R/  
NM Marble Brown-R **NEW!** Iced Mocha-R



Maple Sugar-R Honey Brown-R



**nm** **NEW!** NM Icy Oak-SR



**nm** **NEW!** NM Truffle Brown-R



Creamy Toffee-R Strawberry Swirl



Creamy Toffee-R Strawberry Swirl



Creamy Toffee-R Strawberry Swirl



Honey Wheat Mochaccino



Butter Pecan Harvest Gold



Creamy Toffee Strawberry Swirl



Spring Honey/Spring Honey-T/  
NM Spring Honey-T **NEW!** Frosti Blond



Ice Blond Vanilla Lush



Gold Blond Sugar Cane



Creamy Blond Platinum Pearl



Creamy Blond Platinum Pearl



**nm** Mochaccino-R/  
NM Mochaccino-R **NEW!** Spring Honey-R



**nm** Creamy Toffee-R/  
NM Creamy Toffee-R **NEW!** **nm** Champagne-R/  
NM Champagne-R **NEW!**



Rose Gold-R Sugar Cane-R



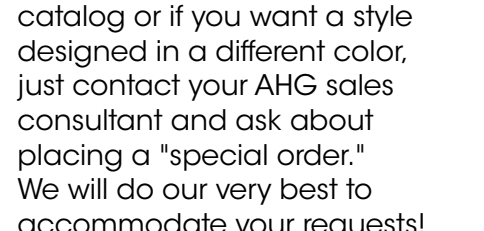
Nutmeg-R/F Seashell Blond-R



**nm** **NEW!** NM Milky Opal-R



Gold Blond Sugar Cane



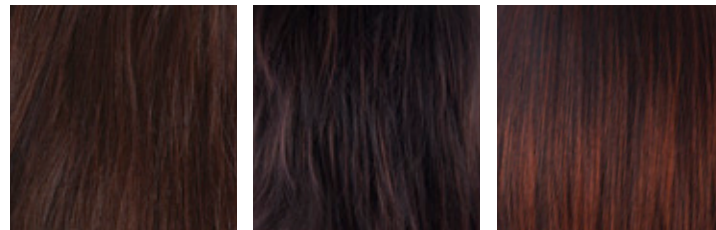
Creamy Blond Platinum Pearl



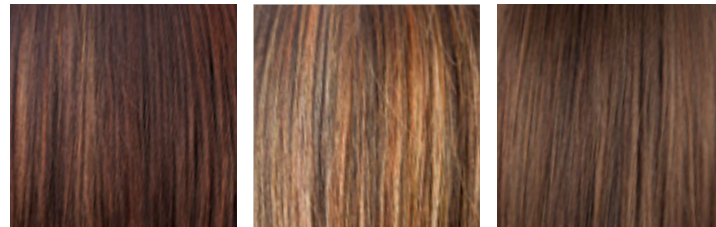
Creamy Blond Platinum Pearl

**SPECIAL ORDERS:** If you don't see a favorite style in this catalog or if you want a style designed in a different color, just contact your AHG sales consultant and ask about placing a "special order." We will do our very best to accommodate your requests! **1.800.353.7363**

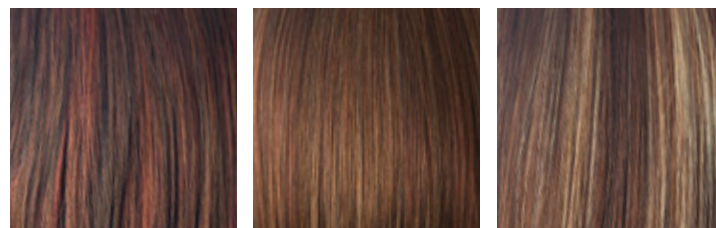
REDS



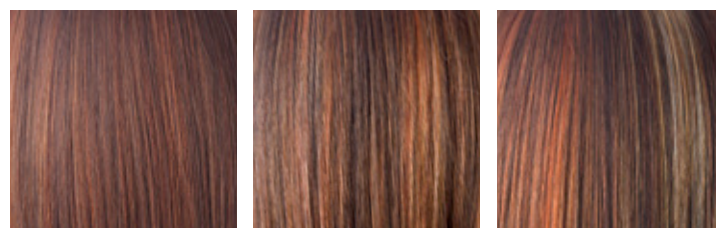
Mulberry Brown Burgundy Burgundy Rosa



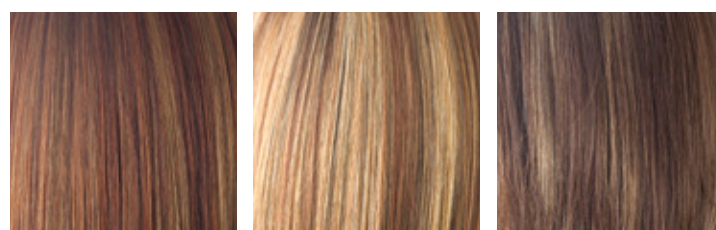
Garnet Glaze Dark Rust Bronzed Brown



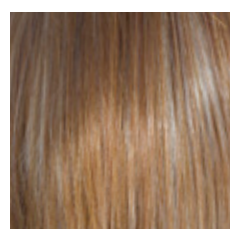
Cayenne Spice Rusty Red Auburn Sugar



Chestnut Ginger Highlight Raspberry Ice

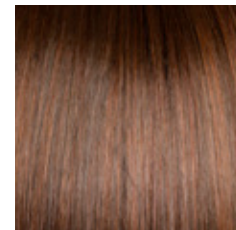


Irish Spice Copper Glaze Coconut Spice

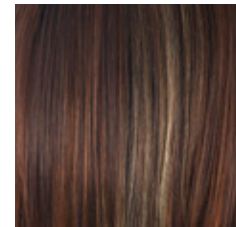


Apricot Frost

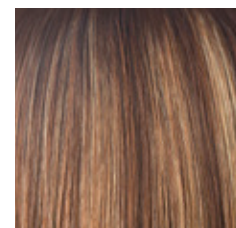
HYBRANT REDS



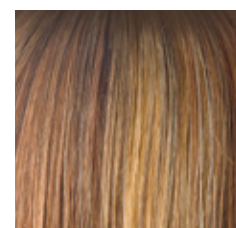
Cherry Brown-R/  
NM Cherry Brown-R NEW!



Raspberry Ice-R

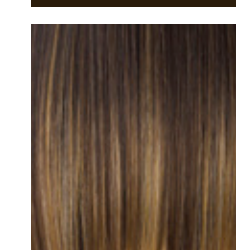


Auburn Sugar-R



Copper Glaze-R

HYBRANT UNDERLIGHTS



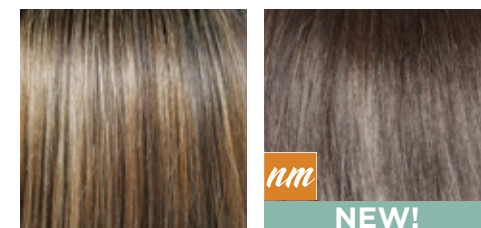
Honeycomb Brown

LONG ROOTED COLORS

LR BRUNETTES

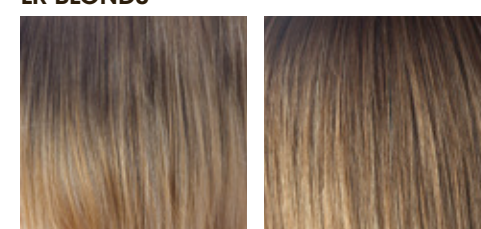


Marble Brown-LR Milk Tea-LR



Kandy Brown-LR NM Truffle Brown-LR NEW!

LR BLONDS

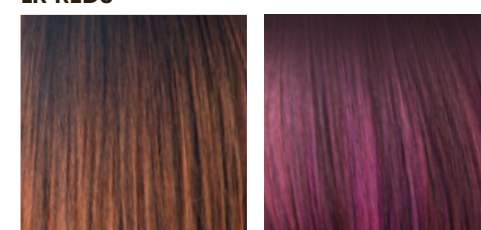


Banana Split-LR Macadamia-LR



Mochaccino-LR Creamy Toffee-LR

LR REDS



Crimson-LR Plumberry Jam-LR

GRAYS



NM Icy Caviar NEW! Midnight Pearl



Sandy Silver™/  
NM Sandy Silver™ NEW! Silver Stone™/  
NM Silver Stone™ NEW!



39 51

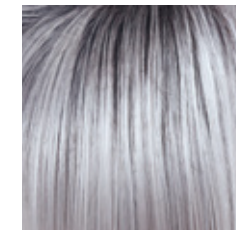


56 Silver Mink/  
NM Silver Mink NEW!



60/ NM 60 Simply White

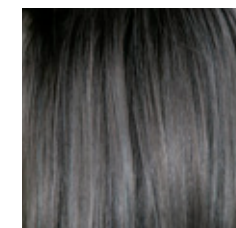
HYBRANT GRAYS



Illumina-R

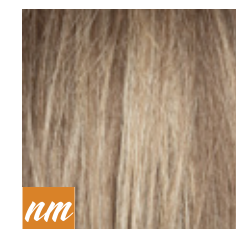


Silver Stone-R



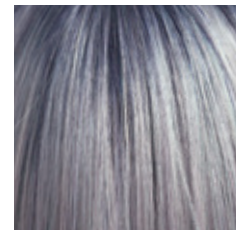
Smoky Gray-R

SOFT ROOTED COLOR



Cashmere Brown-SR/  
NM Cashmere Brown-SR NEW!

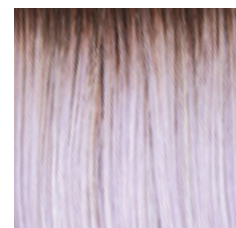
PASTELS



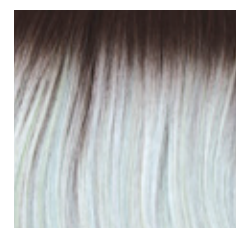
Pastel Blue-R



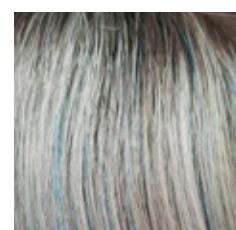
Bubblegum-R



Lavender Blush-R

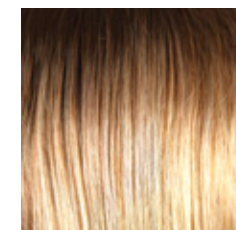


Seaglass-R

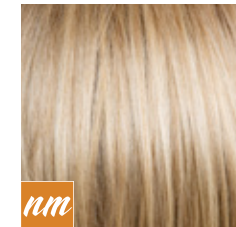


Snowy Sapphire-R

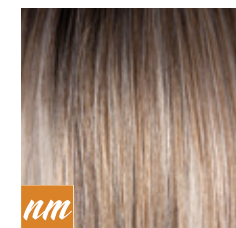
MELTED BLENDS



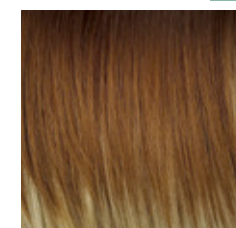
Melted Sunset



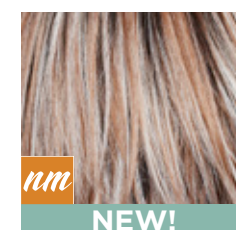
Melted Caramel/  
NM Melted Caramel NEW!



Melted Marshmallow/  
NM Melted Marshmallow NEW!



Melted Coconut



NM Melted Cinnamon NEW!

**HYBRANT ROOT.** INSPIRED by the resplendence of nature and skillfully crafted by artisans, René of Paris proudly offers new designs and Hybrant Root™ Colors to this collection. This vibrant exploration of color chemistry pairs softly shadowed roots with Hybrant Shades™ to create the ultimate wig experience just for you.

**AMORE™ REMY HUMAN HAIR\*** Our remy human hair toppers are available in 8 beautiful and multi-dimensional colors.

\*May contain trace amounts of other hair fibers.

**MELTED BLENDS.** Our dazzling gradient tones. Modern, natural salon-like finish. Available in 5 contemporary colors.

**LONG ROOTED COLORS.** Offers a dramatic ombré style root with a gradual lightening toward the ends.

**SOFT ROOT.** Offers a lighter root for a softer natural look.



Introducing our newest innovation in hair technology – NATURAL MOVEMENT FIBER (NM)

This revolutionary fiber features a blend of heat friendly fiber and synthetic fiber to give you the ultimate styling experience.



**NEW!**

# DARRA

8715

New arrival for 2024 Amore collection. Gorgeous 15.7" long remy human hair style. High quality piece with hand-tied cap will provide satisfaction and confidence.

**Cap Construction:**  
Ear to ear lace front, monofilament, 100% hand-tied, silicone strips at nape, PU lines, cap adjuster at hair side

Weight: 7.6oz (215g)  
Fringe: 13.8-15.7" (35-40cm)  
Crown: 13.8-15.7" (35-40cm)  
Nape: 13.8-15.7" (35-40cm)

Highlighted Blond Root **NEW!**  
Highlighted Brown Root **NEW!**  
Frost **NEW!**  
Natural Blond Root **NEW!**

**Available Colors:**  
Cappucino  
Dark Chocolate  
Medium Natural Brown **NEW!**

**PURELUXE ELEGANCE CAP**  
(100% Hand tied)

The cap construction of the pureluxe elegance is a testament to luxury and craftsmanship. Boasting a 100% hand-tied monofilament cap, each strand of hair is meticulously secured by skilled artisans, ensuring a natural flow and movement. The extended lace front, stretching from ear to ear, seamlessly blends with your own hairline, delivering a flawless and undetectable appearance.

Enhanced with pu strips, the pureluxe elegance cap offers durability and longevity, ensuring your investment stands the test of time. The addition of silicone along the nape ensures a secure and comfortable fit, allowing you to confidently embrace any style with ease.

- Silicone strip on monofilament
- 100% Hand tied / anti slip inner net covered by monofilament
- Wide silicone strip
- Ear to ear lace front
- 3 silicone strips at side of nape
- PU around ear tabs & wire at ear tabs
- 5 silicone strips
- Hidden cap adjuster



Color Shown: Medium Natural Brown **NEW!**



**NEW!**  
**DARRA**  
8715

12

**NEW STYLE**

Color Shown: Highlighted Blond Root **NEW!**

13

**NEW STYLE**

Color Shown: Natural Blond Root **NEW!**



Color Shown: Frost **NEW!**



**NEW!**

**OAKLY**  
8716

New arrival for 2024 Amore collection. Beautiful 9.8" long remy human hair style. High quality piece with hand-tied cap will provide satisfaction and confidence.

**Cap Construction:**  
Ear to ear lace front, monofilament, 100% hand-tied, silicone strips at nape, PU lines, cap adjuster at hair side

Weight: 5.3oz (150g)  
Front: 7.9-9.8" (20-25cm)  
Crown: 7.9-9.8" (20-25cm)  
Nape: 7.9-9.8" (20-25cm)

**Available Colors:**  
Cappuccino  
Dark Chocolate  
Med Natural Brown  
Highlighted Blond Root  
Highlighted Brown Root  
Frost  
Natural Blond Root

**PURELUXE ELEGANCE CAP**  
(100% Hand tied)

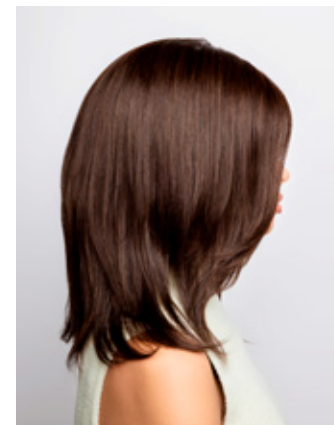
The cap construction of the pureluxe elegance is a testament to luxury and craftsmanship. Boasting a 100% hand-tied monofilament cap, each strand of hair is meticulously secured by skilled artisans, ensuring a natural flow and movement. The extended lace front, stretching from ear to ear, seamlessly blends with your own hairline, delivering a flawless and undetectable appearance.

Enhanced with pu strips, the pureluxe elegance cap offers durability and longevity, ensuring your investment stands the test of time. The addition of silicone along the nape ensures a secure and comfortable fit, allowing you to confidently embrace any style with ease.

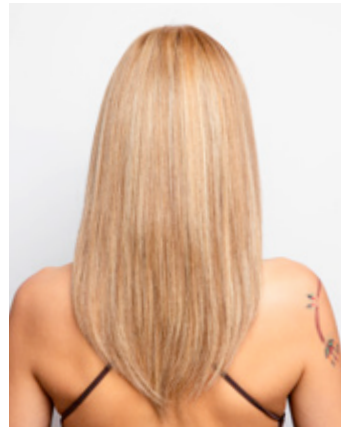
Labels in diagram:  
Silicone strip around monofilament  
100% Hand tied / anti slip inner net covered by monofilament  
Wide silicone strip  
Ear to ear lace front  
3 silicone strips at side of nape  
PU around ear tabs & wire at ear tabs  
5 silicone strips  
Hidden cap adjuster



Color Shown: Dark Chocolate







Color Shown: Frost **NEW!**



Color Shown: Highlighted Brown Root **NEW!**



**NEW!**  
**OAKLY**  
8716

Color Shown: NM Truffle Brown-R **NEW!****NEW!****FINDLEY**

2587

This flattering collarbone bob is an all-season must have. A classy, modern style that's easy to manage. The lace front and monofilament top provide options for parting with and without fringe.

**Cap Construction:**

Extended lace front, monofilament + softnet covered, wefted back

Weight: 4.2oz (120g)

Fringe: 6.7" (17cm)

Crown: 9.4" (24cm)

Nape: 4" (10cm)

**Available Colors:**

**Natural Movement Colors** **NEW!**

**Brunettes**

NM Cappucino

NM Coffee Latte

NM Dark Chocolate

NM Ginger Brown

NM Toasted Brown

**Hybrant Brunettes**

NM Cashmere Brown-SR

NM Marble Brown-R

NM Truffle Brown-R

**Hybrant Blondes**

NM Champagne-R

NM Creamy Toffee-R

NM Milky Opal-R

NM Mochaccino-R

NM Spring Honey-T

**Hybrant Reds**

NM Cherry Brown-R

**Greys**

NM Silver Stone™

**Melted**

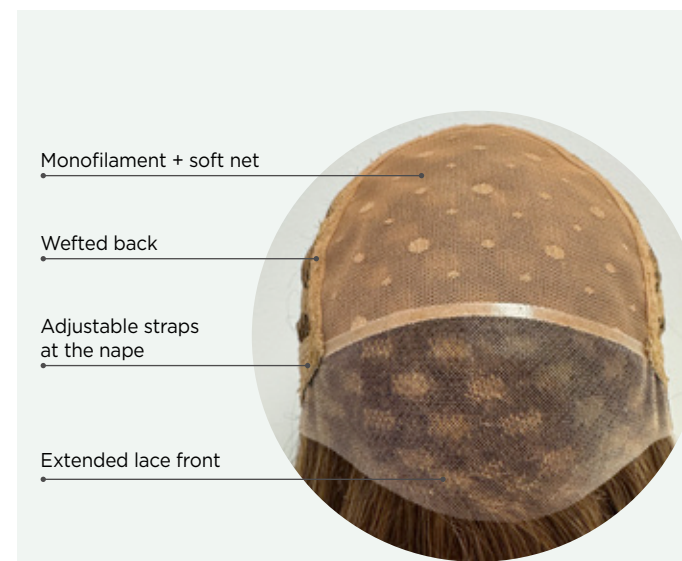
NM Melted Caramel

NM Melted Cinnamon

NM Melted Marshmallow

**Soft Rooted**

NM Icy Oak-SR

**SOFTLUXE PLUS CAP**  
(EXTENDED LACE + SOFT NET )

The Softlux Plus features an extended ear to ear lace front that extends generously, framing your face with a natural, undetectable hairline. The harmonious combination of monofilament and soft net creates a delicate yet durable foundation, ensuring breathability and a feather-light feel. This unique fusion of materials provides a natural movement, allowing you to embrace your style with confidence.

To enhance structure and longevity, the Softlux Plus cap incorporates a wefted back. This feature ensures a secure fit while maintaining a lightweight and airy sensation.

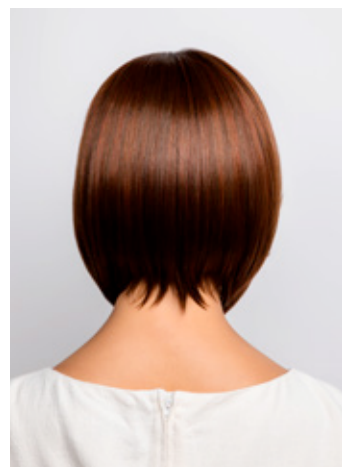
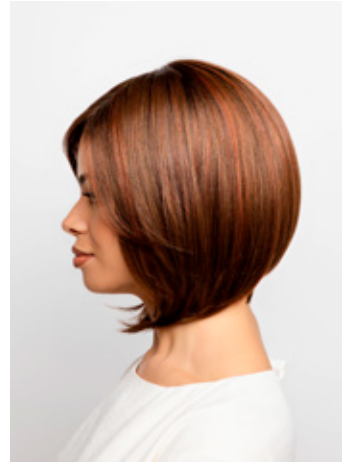
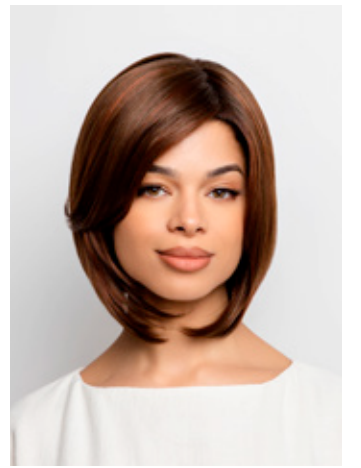
Color Shown: NM Melted Caramel **NEW!**



Color Shown: NM Melted Carmel **NEW!**



Color Shown: NM Cherry Brown-R **NEW!**





**NEW!**  
**GLENN**  
2586

This fun, textured style is perfect for all generations. The tapered fringe and monofilament top provide a variety of styling options. The lace front creates a natural appearance.

**Cap Construction:**  
Wider lace front, monofilament + soft net covered, wefted back

Weight: 2.9oz (82g)  
Fringe: 5.3" (13.5cm)  
Crown: 7.3" (18.5cm)  
Nape: 2.8" (7cm)

**Available Colors:**  
**Brunettes**  
Chocolate Frost  
Coffee Latte  
Dark Chocolate  
Ginger Brown  
Hybrant Brunettes  
Chocolate Twist-R  
Iced Mocha-R  
Marble Brown-R

**Blondes**  
Ice Blond

**Hybrant Blondes**  
Champagne-R  
Creamy Toffee-R  
Mochaccino-R  
Rose Gold-R  
Sugar Cane-R

**Hybrant Reds**  
Cherry Brown-R

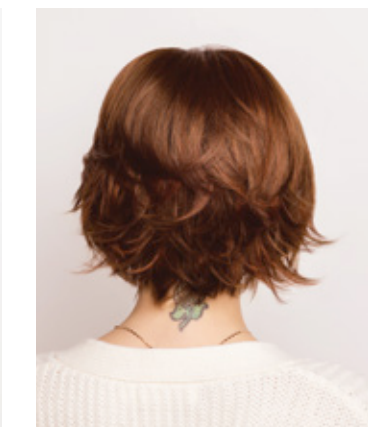
**Greys**  
Silver Stone™

**Melted**  
Melted Caramel  
Melted Marshmallow

**SOFTLUXE CAP (WIDER LACE + SOFT NET)**

The softlux cap features a wider lace front that extends generously, framing your face with a natural, undetectable hairline. The harmonious combination of monofilament and soft net creates a delicate yet durable foundation, ensuring breathability and a feather-light feel. This unique fusion of materials provides a natural movement, allowing you to embrace your style with confidence.

To enhance structure and longevity, the softlux cap incorporates a wefted back. This feature ensures a secure fit while maintaining a lightweight and airy sensation.



Color Shown: Cherry Brown-R **NEW!**



**NEW!**  
**GLENN**  
 2586



Color Shown: Chocolate Twist-R **NEW!**



Color Shown: Silver Stone™





**NEW!**

# LONG TP MONO LG

773

One of our best-selling toppers is now available in a larger base size. This topper instantly creates natural volume and alluring length. Hair part can be placed anywhere on the monofilament.

**Cap Construction:**  
Monofilament, wefted back

Weight: 3.3oz (94g)  
Fringe: 7-8.3" (18-21cm)  
Crown: 16.1" (41cm)

**Available Colors:**  
**Natural Movement Colors** **NEW!**

- Brunettes**
- NM Cappucino
- NM Coffee Latte
- NM Dark Chocolate
- NM Ginger Brown

- Hybrant Brunettes**
- NM Marble Brown-R

- Hybrant Blondes**
- NM Champagne-R
- NM Creamy Toffee-R
- NM Milky Opal-R
- NM Mochaccino-R

- Greys**
- NM 60
- NM Icy Caviar
- NM Sandy Silver
- NM Silver Mink
- NM Silver Stone™

- Long Rooted**
- NM Truffle Brown-LR

- Melted**
- NM Melted Marshmallow



Color Shown: NM Creamy Toffee-R

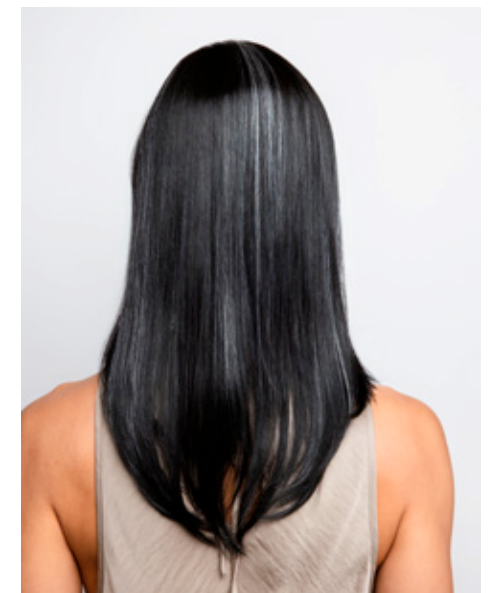




Color Shown: NM Silver Mink **NEW!**



Color Shown: NM Icy Caviar **NEW!**



# XO PLUS COLLECTION

Amore™ XO PLUS features the same XO quality in a lighter cap with airy single monofilament for maximum comfort and breathability.



Airy single monofilament with temple-to-temple lace front



Wefts sewn onto soft, light breathable material that contours to the shape of the head



## ROYCE 2578

Soft and wavy long layers with a side swept fringe. This stunning design has numerous styling options.

**Cap Construction:**  
Lace front + monofilament + soft net  
Fringe: 4.5-6.5" (11.4-16.5cm)  
Crown: 10" (25.4cm)  
Nape: 16" (40.6cm)  
Weight: 4.8oz (137g)

**Colors Shown:**  
Melted Marshmallow

**Available Colors:**  
**Brunettes:**  
Medium Brown  
Dark Chocolate  
Ginger Brown

**LR Brunettes:**  
Milk Tea-LR  
Marble Brown-LR

**Hybrant Blonds:**  
Champagne-R  
Rose Gold-R

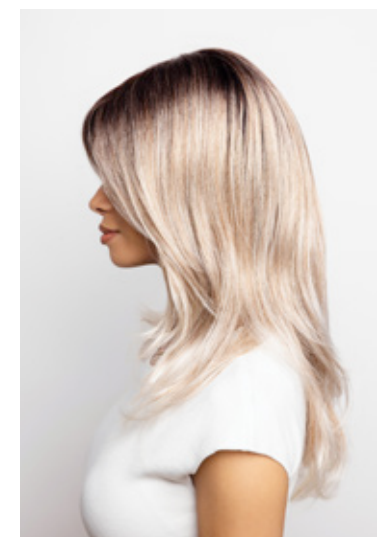
**Blonds:**  
Ice Blond

**LR Blonds:**  
Creamy Toffee-LR  
Mochaccino-LR

**LR Reds:**  
Plumberry Jam-LR

**Melted:**  
Melted Coconut  
Melted Marshmallow

**Pastels:**  
Snowy Sapphire-R





# XO COLLECTION

Amore quality construction with the addition of soft fabric covered wefting for ultimate comfort.



100% hand-tied for multi-directional styling

Double-layered monofilament top for soft contact

Hairline fusion technology with minimal lace front for natural look

Non-slip silicone ear tabs for secure fit



Wefts sewn onto soft, breathable material that contours to the shape of the head

Adjustable bands for custom fit

Non-slip silicone ear tabs for secure fit



## CODI XO 2563

An angled bob with side swept fringe creates a simply beautiful look.

Fringe: 5.7" (14.5 cm)  
Crown: 7.9" (20 cm)  
Nape: 1.8" (4.5 cm)  
Weight: 3.0 oz (85 g)

**Color Shown:**  
Iced Mocha

**Available Colors:**  
**Brunettes:**  
Dark Chocolate  
Ginger Brown

Marble Brown  
Chocolate Frost  
Toasted Brown  
Maple Sugar

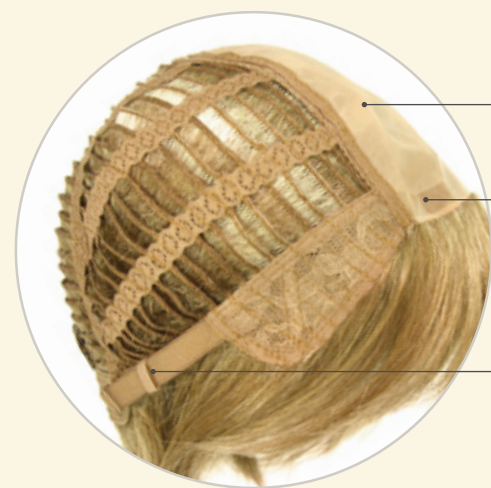
**Blonds:**  
Mochaccino  
Honey Wheat  
Strawberry Swirl  
Spring Honey  
Creamy Toffee  
Creamy Blond

**Hybrant Blonds:**  
Mochaccino-R  
Creamy Toffee-R

**Reds:**  
Auburn Sugar

# AMORE™ COLLECTION

Our standard Amore wig has a double-layer monofilament top construction combined with calibrated machine wefting along the sides and back. All Amore wigs have polyurethane tape tabs along the front and adjustable tabs in the back neck area, to allow for a comfortable fit. The result is a comfortable fit with a natural look that is both fashionable and easy to wear.



Double-layer monofilament top

Polyurethane tape

Adjustable pull straps



Lace Front



## ARDEN 2584

A youthful, face-framing, medium length straight style. Softnet covered monofilament gives the option to change hair part and fringe based on personal preference.

**Cap Construction:**  
Lace front + monofilament with soft net

Weight: 4.7oz (134g)  
Fringe: 3.9" (10cm)  
Crown: 13.4" (34cm)  
Nape: 11.8" (30cm)

**Colors Shown:**  
Melted Caramel (left)  
Chocolate Twist (below)

**Available Colors:**

**Brunettes:**  
Chocolate Frost  
Coffee Latte  
Dark Chocolate  
Ginger Brown  
Toasted Brown  
Chocolate Twist  
Maple Sugar  
Medium Brown

**Hybrant Brunettes:**  
Iced Mocha-R  
Marble Brown-R

**Blonds:**  
Ice Blond  
Spring Honey-T

**Hybrant Blonds:**  
Honey Wheat-R  
Creamy Toffee-R  
Mochaccino-R  
Rose Ggold-R  
Seashell Blond-R  
Champagne-R  
Sugar Cane-R

**Reds:**  
Auburn Sugar

**Hybrant Reds:**  
Copper Glaze-R

**Soft Root:**  
Cashmere Brown-SR

**Grays:**  
Silver Stone™

**Melted Blends:**  
Melted Caramel  
Melted Marshmallow





## BAY 2585

Daily-wear short pixie provides versatile styling options. Lace front creates an option to have fringe down or up.

**Cap Construction:**  
Lace front + monofilament with soft net

Weight: 2.1oz (60g)  
Fringe: 4.7-5.9" (12-15cm)  
Crown: 3.5" (9cm)  
Nape: 2.8" (7cm)

**Colors Shown:**  
Silver Stone™ (left)  
Chocolate Twist (bottom left)  
Melted Caramel (bottom right)

**Available Colors:**  
**Brunettes:**

**Brunettes:**  
Chocolate Frost  
Coffee Latte  
Dark Chocolate  
Ginger Brown  
Medium Brown  
Toasted Brown  
Chocolate Twist

**Hybrant Brunettes:**  
Iced Mocha-R  
Marble Brown-R

**Blonds:**  
Spring Honey-T

**Hybrant Blonds:**  
Champagne-R  
Creamy Toffee-R  
Honey Wheat-R  
Mochaccino-R  
Rose Ggold-R  
Sugar Cane-R

**Reds:**  
Auburn Sugar

**Hybrant Reds:**  
Copper Glaze-R

**Grays:**  
Champagne Silver  
Silver Stone™  
Simply White

**Melted Blends:**  
Melted Caramel  
Melted Marshmallow



## BRANDI 2503

Extra long layers cut to frame the face and neck.

**Cap Construction:**  
Double Monofilament  
Fringe: 9.25" (23.5 cm)  
Crown: 14.5" (37 cm)  
Nape: 13.0" (33 cm)  
Weight: 5.6 oz (159 g)

**Color Shown:**  
Creamy Toffee-R

**Available Colors:**

**Brunettes:**  
Espresso  
Cappuccino  
Dark Chocolate  
Ginger Brown  
Marble Brown

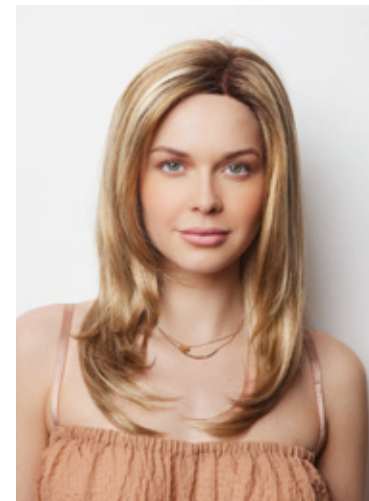
Medium Brown  
Toasted Brown

**LR Brunettes:**  
Marble Brown-LR

**Blonds:**  
Spring Honey  
Gold Blond  
Creamy Blond

**Hybrant Blonds:**  
Mochaccino-R  
Creamy Toffee-R

**Reds:**  
Chestnut





## BRAYLEN

2581

A beautiful mid length style with a beach wave/curl pattern. Braylen has a fuller fringe and a side part, both playful and fun, this medium density style is gorgeous.

**Cap Construction:**

Lace front + double monofilament  
 Fringe: 4.3" (11cm)  
 Crown: 7.9" (20cm)  
 Nape: 4.7" (12cm)  
 Weight: 3.7oz (105g)

**Colors Shown:**

Cashmere Brown-SR (top)  
 Ice Blond (bottom left)  
 Ginger Brown (bottom right)

**Available Colors:**

**Brunettes:**

Chocolate Frost  
 Coffee Latte  
 Dark Chocolate  
 Ginger Brown  
 Maple Sugar  
 Medium Brown

**Hybrant Brunettes:**

Iced Mocha-R  
 Marble Brown-R

**LR Brunettes:**

Kandy Brown-LR

**Blonds:**

Spring Honey-T  
 Ice Blond

**Hybrant Blonds:**

Champagne-R  
 Creamy Toffee-R  
 Mochaccino-R  
 Nutmeg-R  
 Rose Gold-R  
 Sugar Cane-R

**Reds:**

Auburn Sugar

**Melted:**

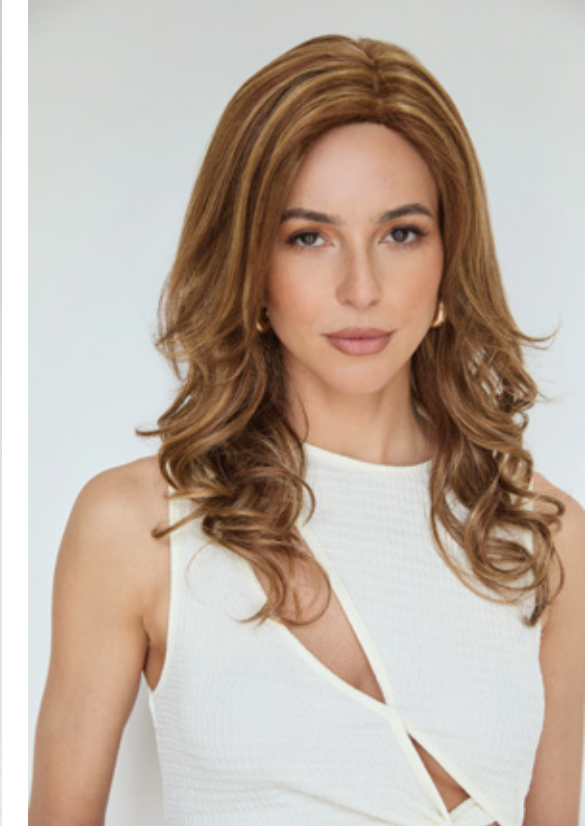
Melted Marshmallow

**Grays:**

Silver Stone™

**Soft Root:**

Cashmere Brown-SR



## BRITTANY

2538

Soft, long, and curvaceous layers command attention and define the essence of this glamorous look.

**Cap Construction:**

Double Monofilament  
 Fringe: 5.0" (12.5 cm)  
 Crown: 11.75" (30 cm)  
 Nape: 15.0" (38 cm)  
 Weight: 5.0 oz (142 g)

**Color Shown:**

Copper Glaze

**Available Colors:**

**Brunettes:**

Espresso  
 Cappuccino  
 Dark Chocolate  
 Coffee Latte  
 Ginger Brown  
 Marble Brown  
 Medium Brown  
 Toasted Brown  
 Maple Sugar

**Blonds:**

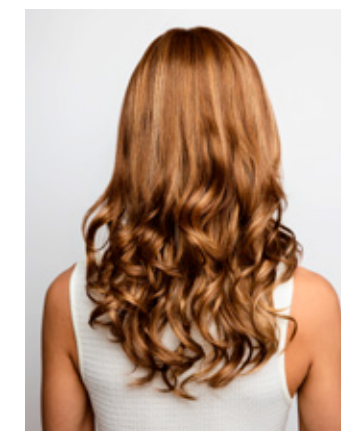
Spring Honey  
 Gold Blond  
 Creamy Toffee  
 Creamy Blond

**Reds:**

Chestnut  
 Copper Glaze

**Hybrant Reds:**

Auburn Sugar-R





## CASEY

### 2572

This soft wavy short style can contour many face shapes.

**Cap Construction:**  
Double Monofilament  
Fringe: 4.7 - 7.0" (12 - 18 cm)  
Crown: 4.7 - 5.1" (12 - 13 cm)  
Nape: 2.6" (7 cm)  
Weight: 2.8 oz (78 g)

**Colors Shown:**  
Mochaccino-R

**Available Colors:**  
**Brunettes:**  
Coffee Latte  
Deep Smoky Brown  
Marble Brown  
Toasted Brown  
Maple Sugar

**Hybrant Brunettes:**  
Honey Brown-R

**Blonds:**  
Creamy Blond

**Hybrant Blonds:**  
Creamy Toffee-R  
Mochaccino-R  
Rose Gold-R

**Grays:**  
Silver Stone™



## CODI

### 2543

An angled bob with side swept fringe creates a simply beautiful look.

**Cap Construction:**  
Double Monofilament  
Fringe: 5.75" (14.5 cm)  
Crown: 7.5" (19 cm)  
Nape: 1.75" (4.5 cm)  
Weight: 3.0 oz (85 g)

**Color Shown:**  
Iced Mocha-R

**Available Colors:**  
**Brunettes:**  
Espresso  
Cappuccino  
Dark Chocolate  
Coffee Latte  
Almond Rocka  
Ginger Brown  
Marble Brown  
Iced Mocha  
Chocolate Frost  
Toasted Brown  
Maple Sugar

**Hybrant Brunettes:**  
Iced Mocha-R  
Maple Sugar-R

**Blonds:**  
Harvest Gold  
Mochaccino  
Honey Wheat  
Strawberry Swirl  
Vanilla Lush  
Spring Honey  
Sugar Cane  
Creamy Toffee  
Creamy Blond

**Hybrant Blonds:**  
Mochaccino-R  
Nutmeg-R  
Creamy Toffee-R

**LR Blonds:**  
Macadamia LR

**Reds:**  
Burgundy  
Ginger Highlight  
Auburn Sugar  
Razberry Ice  
Chestnut  
Irish Spice  
Apricot Frost

**Hybrant Reds:**  
Auburn Sugar-R

**LR Reds:**  
Crimson LR

**Grays:**  
Silver Stone™



# CONNIE

2535

Chic & Sassy - this incredibly low-maintenance style is ultra-feminine and flirty!

**Cap Construction:**  
Double Monofilament  
Fringe: 3.5" (9 cm)  
Crown: 4.5" (11.5 cm)  
Nape: 2.0" (5 cm)  
Weight: 2.0 oz (57 g)

**Color Shown:**  
Silver Mink

**Available Colors:**  
**Brunettes:**  
Expresso  
Dark Chocolate  
Ginger Brown  
Marble Brown  
Medium Brown  
Toasted Brown  
Light Chocolate

**Blonds:**  
Harvest Gold  
Frosti Blond  
Strawberry Swirl  
Spring Honey  
Creamy Blond

**Reds:**  
Ginger Highlight

**Grays:**  
Sandy Silver™  
Silver Stone™  
Silver Mink  
60



# EMY

2576

Daily wear angle bob that's full of style. Volume can be added at crown area to fit a variety of face shapes.

**Cap Construction:**  
Lace front + double monofilament  
Fringe: 7.9" (20cm)  
Crown: 5.9" (15cm)  
Nape: 2.4" (6cm)  
Weight: 2.9-3.1oz (83-88g)

**Color Shown:**  
Champagne-R

**Available Colors:**  
**Brunettes:**  
Dark Chocolate  
Chocolate Frost  
Ginger Brown  
Medium Brown

**Hybrant Brunettes:**  
Iced Mocha-R  
Marble Brown-R

**LR Brunettes:**  
Kandy Brown-LR

**Hybrant Blonds:**  
Champagne-R  
Creamy Toffee-R  
Nutmeg-R  
Rose Gold-R  
Mochaccino-R  
Sugar Cane-R

**Reds:**  
Auburn Sugar

**Grays:**  
Silver Stone™



## ERIKA 2532

A sleek, smooth bob; achieved using razor cuts for a sharper, more distinctive edge.

**Cap Construction:**  
Double Monofilament  
Fringe: 4.0" (10 cm)  
Crown: 9.5" (24 cm)  
Nape: 4.0" (10 cm)  
Weight: 3.5 oz (99 g)

**Color Shown:**  
Strawberry Swirl

**Available Colors:**

**Brunettes:**

Espresso  
Cappuccino  
Dark Chocolate  
Coffee Latte  
Ginger Brown  
Marble Brown  
Medium Brown  
Iced Mocha  
Toasted Brown  
Maple Sugar  
Light Chocolate

**Blonds:**

Harvest Gold  
Mochaccino  
Honey Wheat  
Strawberry Swirl  
Vanilla Lush  
Spring Honey  
Gold Blond  
Creamy Toffee  
Creamy Blond

**Reds:**

Auburn Sugar  
Irish Spice  
Copper Glaze

**Grays:**

Silver Stone™



## ERIN 2513

Transformational bob with beveled fullness throughout nape and sides.

**Cap Construction:**  
Double Monofilament  
Fringe: 3.5" (9 cm)  
Crown: 8.5" (21.5 cm)  
Nape: 2.0" (5 cm)  
Weight: 3.1 oz (88 g)

**Color Shown:**  
Auburn Sugar

**Available Colors:**

**Brunettes:**

Cappuccino  
Dark Chocolate  
Coffee Latte  
Ginger Brown  
Marble Brown  
Medium Brown  
Toasted Brown  
Maple Sugar  
Light Chocolate

**Blonds:**

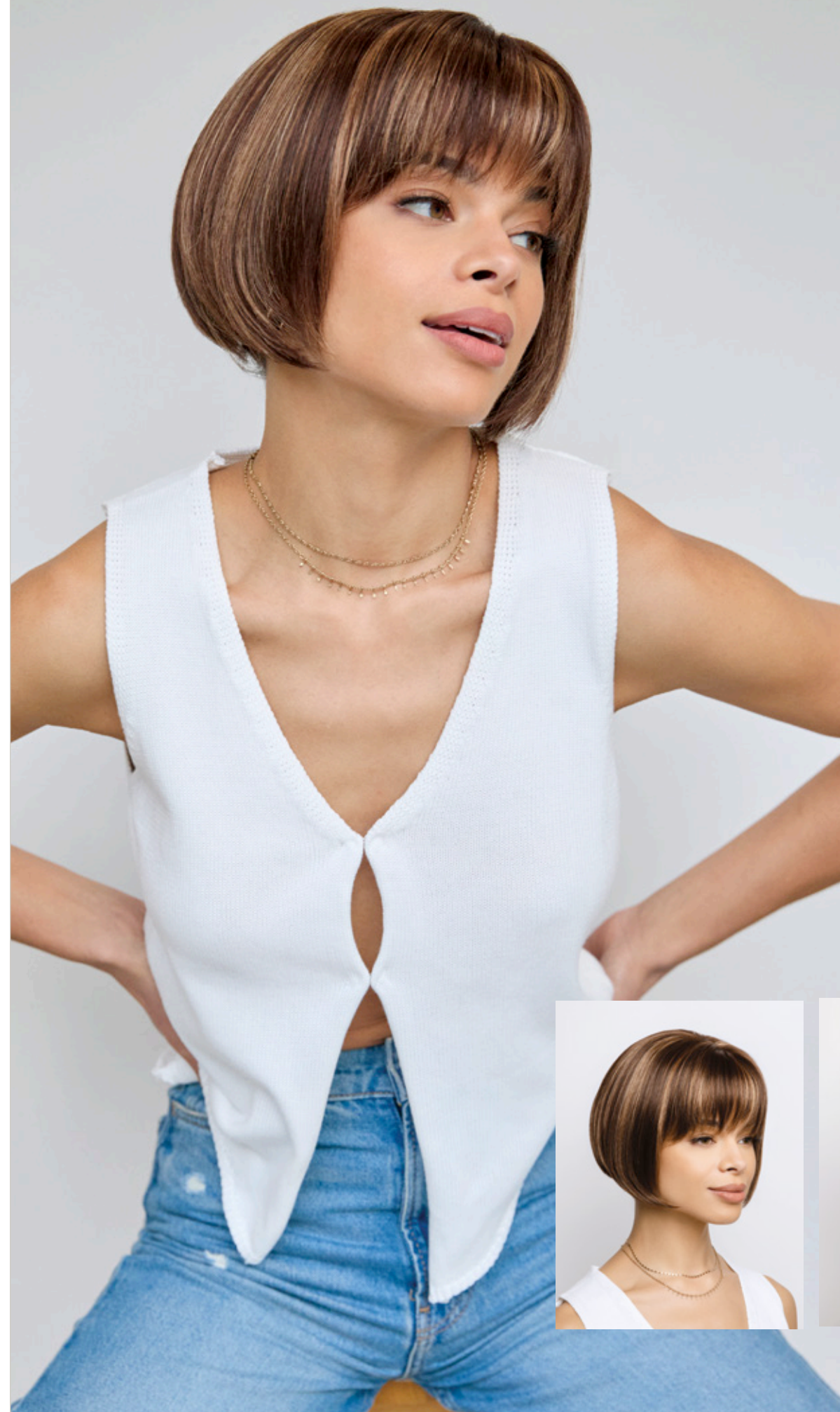
Harvest Gold  
Mochaccino  
Frosti Blond  
Strawberry Swirl  
Spring Honey  
Gold Blond  
Creamy Toffee  
Creamy Blond

**Reds:**

Auburn Sugar  
Chestnut

**Grays:**

Silver Stone™



## LEVY 2582

A mid-length layered style with a fuller fringe and a bouncy salon-inspired wavy texture that rests on the shoulders.

### Cap Construction:

Double monofilament  
Fringe: 5.1" (13cm)  
Crown: 8.3" (21cm)  
Nape: 7.9" (20cm)  
Weight: 3.9oz (111g)

### Colors Shown (left to right):

Iced Mocha-R (top)  
Seashell Blond-R (bottom left)  
Kandy Brown-LR (bottom right)

### Available Colors:

#### Brunettes:

Chocolate Frost  
Coffee Latte  
Dark Chocolate  
Ginger Brown  
Maple Sugar  
Medium Brown

#### Hybrant Brunettes:

Iced Mocha-R  
Marble Brown-R

### LR Brunettes:

Kandy Brown-LR

### Blonds:

Spring Honey-T

### Hybrant Blonds:

Champagne-R  
Creamy Toffee-R  
Mochaccino-R  
Nutmeg-R  
Rose Gold-R  
Sugar Cane-R  
Seashell Blond-R

### Reds:

Auburn Sugar

### Melted:

Melted Marshmallow

### Grays:

Silver Stone™  
Simply White

### Soft Root:

Cashmere Brown-SR



## SYBIL 2583

A sophisticated long layered bob, this lovely new style has shape enhancing layers and a long side fringe that highlights the cheek bones.

### Cap Construction:

Extended lace front + double monofilament + hand-tied  
Fringe: 7.5" (19cm)  
Crown: 8.3" (21cm)  
Nape: 4.9" (12.5cm)  
Weight: 2.7-2.9oz (76-81g)

### Colors Shown:

Marble Brown (main)  
Silver Stone™ (bottom left)  
Cashmere Brown-SR (bottom right)

### Available Colors:

#### Brunettes:

Chocolate Frost  
Coffee Latte  
Dark Chocolate  
Ginger Brown  
Maple Sugar  
Medium Brown  
Marble Brown

#### Hybrant Brunettes:

Iced Mocha-R

### LR Brunettes:

Kandy Brown-LR

### Blonds:

Spring Honey-T  
Creamy Blond  
Creamy Toffee

### Hybrant Blonds:

Champagne-R  
Mochaccino-R  
Rose Gold-R  
Sugar Cane-R

### Reds:

Auburn Sugar

### Melted:

Melted Marshmallow

### Grays:

Silver Stone™

### Soft Root:

Cashmere Brown-SR







## TATE 2580

Tate has soft layers that create body and shape with a soft fringe that accentuate the eyes.

**Cap Construction:**  
Lace front + double monofilament + hand-tied

Fringe: 5.3" (13.5cm)  
Crown: 6.3" (16cm)  
Nape: 3.1" (8cm)  
Weight: 2.6-3.0oz (78-84g)

**Colors Shown:**  
Spring Honey-T (top)  
Silver Stone-R bottom right)  
Auburn Sugar (bottom left)

**Available Colors:**

**Brunettes:**  
Chocolate Frost  
Coffee Latte  
Dark Chocolate  
Ginger Brown  
Maple Sugar  
Medium Brown

**Hybrant Brunettes:**  
Iced Mocha-R  
Marble Brown-R

**LR Brunettes:**  
Kandy Brown-LR

**Blonds:**  
Spring Honey-T

**Hybrant Blonds:**  
Champagne-R  
Creamy Toffee-R  
Mochaccino-R  
Nutmeg-R  
Rose Gold-R  
Sugar Cane-R

**Reds:**  
Auburn Sugar

**Melted:**  
Melted Marshmallow

**Grays:**  
Silver Stone™  
Simply White

**Hybrant Grays:**  
Silver Stone-R

**Soft Root:**  
Cashmere Brown-SR



## SAMANTHA 2514

Shoulder length, pageboy cut with chiseled ends and side-swept textured fringe.

**Cap Construction:**  
Double Monofilament  
Fringe: 7.0" (17.5 cm)  
Crown: 10.0" (25 cm)  
Nape: 7.0" (17.5 cm)  
Weight: 4.2 oz (119 g)

**Color Shown:**  
Creamy Blond

**Available Colors:**

**Brunettes:**  
Espresso  
Cappucino  
Dark Chocolate  
Coffee Latte  
Ginger Brown  
Marble Brown  
Medium Brown  
Iced Mocha

Toasted Brown  
Maple Sugar

**Blonds:**  
Mochaccino  
Spring Honey  
Gold Blond  
Creamy Toffee  
Creamy Blond

**Reds:**  
Auburn Sugar





## STEVIE

### 2516

Long flowing layers evoke a sensuous essence.

**Cap Construction:**  
Double Monofilament  
Fringe: 4.0" (10 cm)  
Crown: 17.0" (43 cm)  
Nape: 18.0" (45.5 cm)  
Weight: 5.2 oz (147 g)

**Color Shown:**  
Cappucino

**Available Colors:**  
**Brunettes:**  
Espresso  
Cappucino  
Dark Chocolate  
Coffee Latte  
Ginger Brown  
Marble Brown  
Medium Brown

Chocolate Frost  
Toasted Brown

**Blonds:**  
Mochaccino  
Honey Wheat  
Strawberry Swirl  
Vanilla Lush  
Spring Honey  
Gold Blond  
Sugar Cane  
Creamy Toffee  
Creamy Blond

**Reds:**  
Burgundy Rosa  
Auburn Sugar



# TATUM

2548

Fashion-forward straight look with center part and blunt fringe.

**Cap Construction:**

Double Monofilament  
Fringe: 3.5" (9 cm)  
Crown: 13.0" (33 cm)  
Nape: 6.5" (16.5 cm)  
Weight: 3.7 oz (104 g)

**Color Shown:**

Sugar Cane

**Available Colors:**

**Brunettes:**  
Espresso  
Cappucino  
Dark Chocolate  
Coffee Latte  
Ginger Brown  
Marble Brown  
Iced Mocha  
Chocolate Frost  
Toasted Brown  
Maple Sugar

**Blonds:**

Harvest Gold  
Mochaccino  
Strawberry Swirl  
Spring Honey  
Sugar Cane  
Creamy Toffee  
Creamy Blond

**Reds:**

Auburn Sugar  
Irish Spice  
Apricot Frost



# TOVA

2540

This highly flattering cropped pixie gives you texture and style.

**Cap Construction:**

Double Monofilament  
Fringe: 4.0" (10 cm)  
Crown: 3.0" (7.5 cm)  
Nape: 2.25" (5.5 cm)  
Weight: 2.0 oz (57 g)

**Color Shown:**

Marble Brown

**Available Colors:**

**Brunettes:**  
Dark Chocolate  
Coffee Latte  
Ginger Brown  
Marble Brown  
Toasted Brown  
Maple Sugar

**Blonds:**

Harvest Gold  
Mochaccino  
Strawberry Swirl  
Spring Honey  
Creamy Toffee

**Reds:**

Copper Glaze

**Grays:**

Silver Stone™



## AMORE™ REMY HUMAN HAIR

Our remy human hair styles that are made with the highest quality human hair fiber, sophisticated and flattering hair colors, and well-designed hand-tied cap construction.

\*May contain trace amounts of other hair fibers.



## BRIELLE

8711

This soft, feminine, face-framing layer style of 100% remy hair creates an absolutely stunning look. Lace front, monofilament top, silicone strips and softnet back provide maximum quality and comfort.

### Cap Construction:

Lace front + monofilament + hand-tied + extended nape + hook adjuster + silicone strips + PU @ ear tabs

Weight: 5.0-5.3oz (142-150g)

Fringe: 7" - 8" (17.8-20.3cm)

Crown: 14" (35.6cm)

Nape: 13" (33cm)

### Colors Shown:

Chocolate Parfait Root (left)

Starlight Blonde (bottom middle)

Hazelnut Cream Root (right insets)

### Available Colors:

Chocolate Parfait Root

Hazelnut Cream Root

Brown Spice

Dark Chocolate

Moonlight Blonde Root

Starlight Blonde





## THEA 8710

The lace front creates a refined natural appearance. This is a timeless remy human hair style. It's easy to change hair direction of this monofilament top wig, which allows a personalized finish.

**Cap Construction:**  
Lace front + monofilament + hand-tied/wefts @ nape + velcro adjuster+ extended nape + PU @ ear tabs

Weight: 4.9-5.2oz (138-146g)  
Fringe: 9" (22.9cm)  
Crown: 12" (30.5cm)  
Nape: 12" (30.5cm)

**Colors Shown (left to right):**  
Moonlight Blonde Root (left insets, main)  
Hazelnut Cream Root (right insets)

**Available Colors:**  
Chocolate Parfait Root  
Hazelnut Cream Root  
Brown Spice  
Dark Chocolate  
Moonlight Blonde Root  
Starlight Blonde

# HALO COLLECTION

Comfy, light and stylish Halos were designed to be worn under a hat, scarf or wrap. A detachable fringe gives you a choice to change up your look to complement any outfit. A great alternative to a full wig.



## HALO BOB 736

Chin-length layered bob with side swept detachable fringe

Overall: 10.0" (24.4 cm)  
Weight: 2.9 oz (82 g)

Detachable bangs  
Hat not included

**Color Shown:**  
Creamy Blond

**Available Colors:**  
**Brunettes:**  
Cappucino  
Dark Chocolate  
Coffee Latte  
Ginger Brown  
Marble Brown  
Toasted Brown  
Maple Sugar

**Blonds:**  
Mochaccino  
Spring Honey  
Creamy Toffee  
Creamy Blond

**Reds:**  
Coconut Spice

Circumference: 53.5 cm



## ROP HALO 733

Straight, shoulder length bob covers the face and neck line with natural movement.

Overall: 14.0" (35.5 cm)  
Weight: 2.9 oz (82 g)

Hat not included

**Color Shown:**  
Mochaccino

**Available Colors:**  
**Brunettes:**  
Cappucino  
Dark Chocolate  
Ginger Brown  
Marble Brown  
Toasted Brown  
Maple Sugar  
Mochaccino

**Blonds:**  
Mochaccino  
Spring Honey  
Creamy Toffee

Circumference: 53.5 cm





Circumference: 53.5 cm



## LONG HALO

### 737

Our popular long style is now available in Halo! Use it as a regular Halo or as an alternative way to change your look for a day.

Overall: 21.5" (55cm)  
Weight: 3.7oz (104g)

Detachable bangs  
Hat not included

**Color Shown:**  
Honey Brown

**Available Colors:**  
**Brunettes:**  
Cappucino  
Dark Chocolate  
Ginger Brown

Maple Sugar  
Marble Brown  
Toasted Brown

**Hybrant Brunettes:**  
Honey Brown  
Marble Brown-R

**Blonds:**  
Creamy Blond  
Creamy Toffee  
Mochaccino  
Spring Honey



Circumference: 53.5 cm



## WAVY BOB HALO

738

This soft wave bob compliments your face and neck line with a stylish look.

Overall: 11" (28 cm)  
Weight: 2.5 oz (72 g)

Detachable bangs  
Scarf not included

**Color Shown:**  
Ginger Brown

**Available Colors:**  
**Brunettes:**  
Cappucino  
Dark Chocolate  
Ginger Brown  
Maple Sugar  
Marble Brown  
Toasted Brown

**Hybrant Brunettes:**  
Honey Brown

**Blonds:**  
Creamy Blond  
Creamy Toffee  
Mochaccino  
Spring Honey

## REMY HUMAN HAIR TOPPERS

Introducing our newest additions of remy human hair toppers. These pieces are made with the highest quality human hair. With their unique bases, you can find exactly what you're looking for to achieve your desired look.

### DIAMOND TOPPER 8706

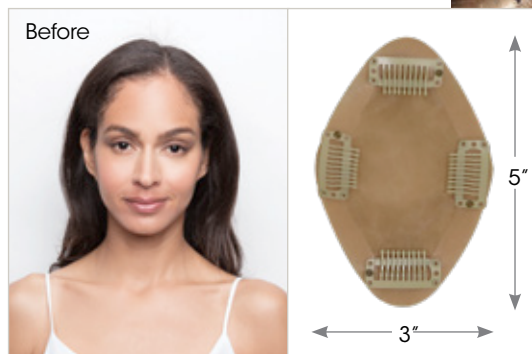
A quality human hair enhancer with a finely shaped base constructed to fit perfectly secure while adding density.

Front length: 5.0" (12.7 cm)  
Side length: 12" (30.5 cm)  
Weight: 11 - 13 oz (32-36 g)

**Color Shown:**  
Dark Chocolate

**Available Colors:**  
**Brunettes:**  
Brown Spice  
Cappucino  
Dark Chocolate  
Honey Brown  
Toffee Brown

**Blonds:**  
Moonlight Blond-LR  
Starlight Blonde



### REMY HH TOPPER 14" 8708

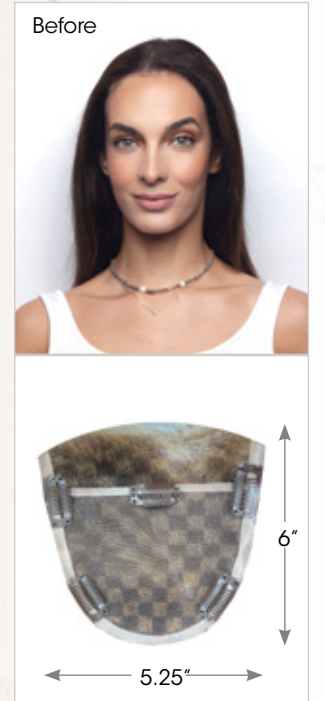
This Remy human hair topper is the perfect addition to your hair. It is made of 100% Remy human hair, giving you the highest quality and natural look.

**Cap construction:**  
Lace front + monofilament  
Hair length: 7"-14" (17.8-35.6cm)  
Weight: 2.4oz (68g)

**Color Shown:**  
Dark Chocolate

**Available Colors:**  
**Brunettes:**  
Brown Spice  
Cappucino  
Chocolate Parfait Root  
Dark Chocolate  
Expresso  
Honey Brown  
Toffee Brown

**Blonds:**  
Hazelnut Cream Root  
Golden Wheat  
Moonlight Blonde Root  
Starlight Blonde







## REMY HH TOPPER 10" 8709

Crafted with the highest quality Remy human hair, this topper offers natural-looking coverage and can be styled with heat tools.

**Cap construction:**  
Lace front + monofilament  
Hair length: 4.5"-10" (11.4-25.4cm)  
Weight: 1.8oz (51g)

**Color Shown:**  
Hazelnut Cream Root

**Available Colors:**  
**Brunettes:**  
Brown Spice  
Cappucino  
Chocolate Parfait Root  
Dark Chocolate  
Expresso  
Honey Brown  
Toffee Brown

**Blonds:**  
Hazelnut Cream Root  
Golden Wheat  
Moonlight Blonde Root  
Starlight Blonde



## MINI TOPPER 8707

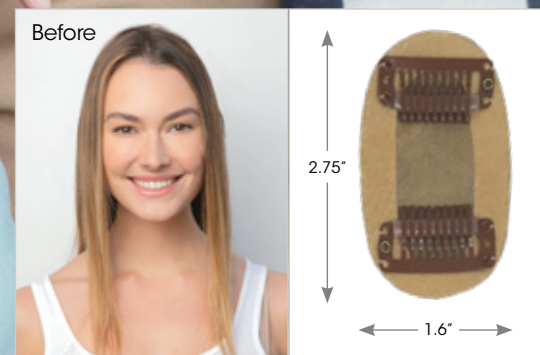
A uniquely crafted topper designed to fit anywhere on your head.

Front Length: 4.5" (11.4 cm)  
Side Length: 6.0" (15.2 cm)  
Weight: 0.4 - 0.5 oz (11-13 g)

**Color Shown:**  
Honey Brown

**Available Colors:**  
**Brunettes:**  
Brown Spice  
Cappucino  
Dark Chocolate  
Expresso  
Honey Brown

**Blonds:**  
Moonlight Blonde Root  
Starlight Blonde  
Toffee Brown





## FLEX TP

912

This topper is a simple way to add density and coverage! Our TP features a Monofilament base including our soft wire perimeter technology for the perfect fit.

Fringe: 12.99 - 14.17" (33 - 36 cm)  
Top: 16.14" (41cm)  
Weight: 1.19 oz (34 g)

**Colors Shown:**  
Ginger Brown

**Available Colors:**  
**Brunettes:**  
Espresso  
Cappuccino  
Dark Chocolate  
Ginger Brown  
Toasted Brown

Medium Brown  
Marble Brown

**Hybrant Brunettes:**  
Honey Brown-R

**Blonds:**  
Mochaccino  
Creamy Blond  
Creamy Toffee  
Spring Honey

**Grays:**  
Silverstone™



## HAIR ENHANCEMENTS

Boost your confidence and look your best. Our quality hair enhancements are designed to create instant transformation that will make you shine.

Light, breathable base constructions matched with touchable hair in a variety of beautifully rich colors provide the ultimate versatility and comfort.



## PIXIE TP MONO

760

NEW \*NATURAL  
MOVEMENT FIBER

Beautifully soft, yet reliable texture. This short-layered topper is super lightweight. High quality monofilament base with 4 sturdy clips provides maximum comfort and security.

**Cap Construction:**  
Single monofilament,  
4 hair clips, PU front line  
Weight: 0.8oz (23.5g)  
Length: 4.3-5.1" (11-13cm)

**Colors Shown:**  
NM Silver Stone™ (left main, left insets)  
NM Coffee Latte (bottom right inset)

**Available Colors:**  
**Brunettes\***  
NM Coffee Latte  
NM Dark Chocolate  
NM Espresso  
NM Ginger Brown  
NM Marble Brown  
NM Medium Brown

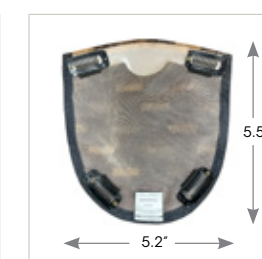
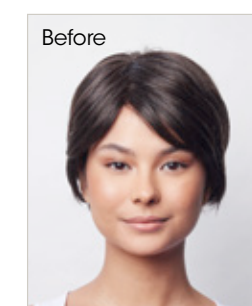
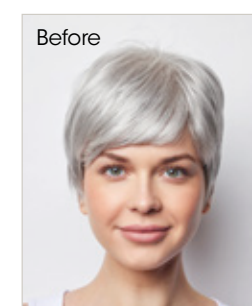
**Blonds\***  
NM Creamy Blond  
NM Creamy Toffee  
NM Harvest Gold  
NM Mochaccino  
NM Spring Honey

**Hybrant Blonds\***  
NM Champagne-R

**Reds\***  
NM Auburn Sugar

**Grays\***  
NM Sandy Silver™  
NM Silver Stone  
NM 60

**Soft Root\***  
NM Cashmere Brown-SR





## LUXE TP 911

This topper increases volume and is a gorgeous enhancement to your everyday look. Our TP features a Monofilament base + lace front including soft wire perimeter technology for a perfect fit.



Fringe: 9.44" (24 cm)  
Top: 16.53" (42 cm)  
Weight: 2.22 oz (63 g)

**Color Shown:**  
Spring Honey-R

**Available Colors:**  
**Brunettes:**  
Espresso  
Cappuccino  
Dark Chocolate  
Ginger Brown  
Medium Brown

**Hybrant Brunettes:**  
Honey Brown-R

Marble Brown-R

**Blonds:**  
Gold Blond  
Creamy Blond

**Hybrant Blonds:**  
Mochaccino-R  
Spring Honey-R  
Creamy Toffee-R  
Sugar Cane-R

**Grays:**  
Silverstone™

## LONG TP MONO 752

This topper can be worn as a highlighter or filler, and covers the top of the head from fringe to crown.

Hair Length: 18.0"  
(45.5 cm)  
Weight: 2.5 oz (71 g)

**Color Shown:**  
Marble Brown

**Available Colors:**  
**Brunettes:**  
Espresso  
Cappuccino  
Dark Chocolate  
Ginger Brown  
Marble Brown  
Medium Brown  
Light Chocolate  
Kahlua Blast

**LR Brunettes:**  
Marble Brown-LR

**Blonds:**  
Harvest Gold  
Vanilla Lush  
Spring Honey  
Gold Blond

**Hybrant Blonds:**  
Mochaccino-R  
Nutmeg-R/F  
Creamy Toffee-R  
Spring Honey-R

**Grays:**  
60  
Sandy Silver  
Sliver Mink  
Silver Stone™





## FRINGE FLAIR

759

Update your hairstyle with our sweeping asymmetrical fringe without cutting your hair.

Fringe: 4.5" (11.5 cm)  
Crown: 8.0" (20.5 cm)  
Weight: 0.4 oz (10 g)

**Color Shown:**  
Dark Chocolate

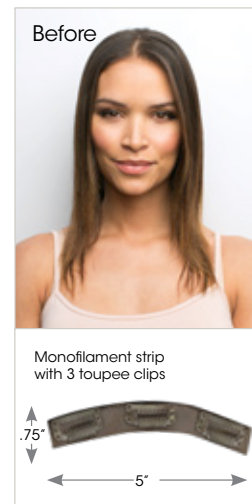
**Available Colors:**

**Brunettes:**

Espresso  
Cappucino  
Dark Chocolate  
Ginger Brown  
Marble Brown  
Medium Brown  
Toasted Brown  
Light Chocolate

**Blonds:**

Harvest Gold  
Spring Honey  
Gold Blond



## MEDIUM TP MONO

751

This topper can be worn as a highlighter or filler, and covers the top of the head from fringe to crown.

Hair Length: 8.0" (20.5 cm)  
Weight: 1.6 oz (45 g)

**Color Shown:**  
Marble Brown

**Available Colors:**

**Brunettes:**

Dark Chocolate  
Ginger Brown  
Marble Brown  
Medium Brown  
Light Chocolate

**Hybrant Brunettes:**

Marble Brown-R

**Blonds:**

Harvest Gold  
Vanilla Lush  
Spring Honey  
Gold Blond

**Hybrant Blonds:**

Creamy Toffee-R  
Mochaccino-R

**Grays:**

60  
Sandy Silver  
Silver Mink  
Silver Stone™



# AMORE™ CHILDREN'S COLLECTION

Our children's wigs are light weight, comfortable, wefted and with an invisible hairline for ultimate comfort.

## MILEY & LOGAN



Light and breathable net top

Lace front, with full mono top covered by soft material

Elastic lace allows cap to stretch for more flexibility



## ELSIE, ADDISON & KENSLEY



Light and breathable net top

Lace front with lace part cap

Elastic lace allows cap to stretch for more flexibility



## ADDISON 4208

Unisex style with tapered nape and natural body.

**Cap Construction:**  
Lace Front + Lace Part  
Fringe: 2.36" (6 cm)  
Crown: 4.72" (12 cm)  
Nape: 1.96" (5 cm)  
Weight: 1.69 oz (48 g)

**Colors Shown:**  
Sugar Cane (main)

Creamy Toffee (inset)

**Available Colors:**

**Brunettes:**  
Cappucino  
Medium Brown  
Light Chocolate  
Golden Brown

**Blonds:**  
Mochaccino  
Creamy Toffee  
Spring Honey

Sugar Cane  
Creamy Blond

**Reds:**  
Dark Rust

**Pastels:**  
Bubblegum-R  
Seaglass-R



## ELSIE 4209

Playful bob with a light wispy bang

**Cap Construction:**  
Lace front/part  
Fringe: 3.3" (8.5 cm)  
Crown: 10.2" (26 cm)  
Nape: 3.1" (8 cm)  
Weight: 2.4 - 2.6 oz (70 - 76 g)

**Colors Shown:**  
Seaglass-R (main)  
Mochaccino (inset)

**Available Colors:**  
**Brunettes:**  
Cappucino  
Medium Brown  
Light Chocolate

Golden Brown

**Blonds:**  
Mochaccino  
Creamy Toffee  
Spring Honey  
Sugar Cane  
Creamy Blond

**Reds:**  
Dark Rust

**Pastels:**  
Bubblegum-R  
Lavender Blush-R  
Seaglass-R



## KENSLEY 4207

A-line bob with side swept fringe for versatility.

**Cap Construction:**  
Lace Front + Lace Part  
Fringe: 4.72" (12 cm)  
Crown: 7.48" (19 cm)  
Nape: 1.96" (5 cm)  
Weight: 2.18 oz (62 g)

**Colors Shown:**  
Lavender Blush-R

**Available Colors:**  
**Brunettes:**  
Cappucino  
Medium Brown  
Light Chocolate  
Golden Brown

**Blonds:**  
Mochaccino  
Creamy Toffee  
Spring Honey  
Sugar Cane  
Creamy Blond

**Reds:**  
Dark Rust

**Pastels:**  
Bubblegum-R  
Lavender Blush-R  
Seaglass-R





## LOGAN

4205

Unisex style with tapered nape and natural body.

Extended lace covered by soft net material

**Cap Construction:**  
Lace front + Monofilament  
Fringe: 5.0" (12.5 cm)  
Crown: 5.0" (12.5 cm)  
Nape: 2.0" (5 cm)  
Weight: 2.2 oz (62 g)

**Color Shown:**  
Medium Brown

**Available Colors:**  
**Brunettes:**  
Cappucino  
Medium Brown  
Golden Brown

**Blonds:**  
Spring Honey  
Gold Blond  
Creamy Blond



## MILEY

4206

Soft side swept fringe and sweet shoulder length locks.

Extended lace covered by soft net material

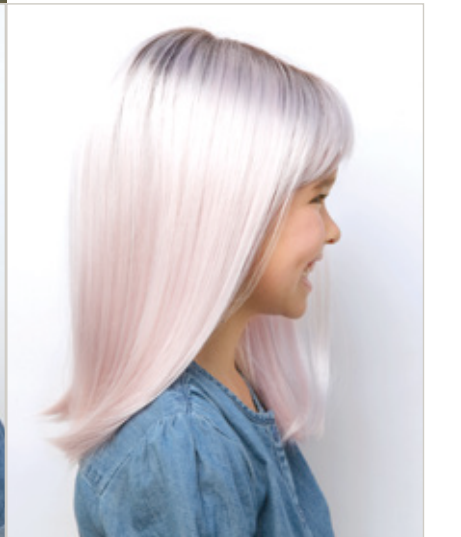
**Cap Construction:**  
Lace front + Monofilament  
Fringe: 4.5" (11.5 cm)  
Crown: 14.5" (37 cm)  
Nape: 8.25" (21 cm)  
Weight: 3.9 oz (110 g)

**Color Shown:**  
Bubblegum-R

**Available Colors:**  
**Brunettes:**  
Cappucino  
Medium Brown  
Golden Brown

**Blonds:**  
Spring Honey  
Gold Blond  
Creamy Blond

**Pastels:**  
Lavender Blush-R  
Seaglass-R  
Bubblegum-R



ACCESSORIES (CONTINUED)



8123  
21" MANNEQUIN



8119  
17" MANNEQUIN



9580  
WIG CAP  
Available Colors:  
Beige, Black, Brown



9581  
WIG LINER  
OPEN MESH  
Available Colors:  
Beige, Black, Brown



9593 2-SIDED  
VELVET GRIP  
Available Colors:  
Beige, Brown



9592  
VELVET GRIP  
with short lace  
Available Colors:  
Brown, Beige



8128  
18" WHITE  
MANNEQUIN



8129  
18" GRAY  
MANNEQUIN  
with logo



8130  
18" BLACK  
MANNEQUIN  
with logo



8131  
18" WHITE  
MANNEQUIN  
with logo



9587  
ROP WIG LIFT COMB



9585  
SILVER COMB CLIP  
Sold in 12 pcs



9560  
STYROFOAM HEAD  
12pc package



9561  
RENE OF PARIS FLAT IRON



9591  
ROP FOLDING BRUSH



965  
WIRE BRUSH

9582  
WIG STAND  
PACKAGE  
3pc package  
contains colors:  
Black, Blue & Gray

Sold separately:  
9583  
WIG STAND  
Black, Blue, Gray



Convenient "snap together" stand for wig storage or service.



9511  
SWATCHES

The color swatches let you see your perfect hair match.



9514  
AMORE™ HUMAN HAIR\* SWATCHES

RENÉ OF PARIS™  
MAINTENANCE TOOLS

**Rene of Paris Prepare Shampoo**

This luxurious shampoo is formulated with the ultimate in moisture replenishing cleansers. Rene of Paris Prepare Shampoo helps maintain the smoothness, strength and polish of your wig/hairpiece.

The gentle combination of plant and vegetable extracts, along with natural essential oils and vitamins, provides a gentle but thorough cleansing of your wig/hairpiece. The results will revolutionize how you feel.

**Rene of Paris Light Conditioner**

Rene of Paris Conditioner for synthetic wigs revitalizes dull hair leaving it softer, shinier and easy to manage.

**Rene of Paris Revive Liquid Enhancement**

The finest advanced liquid developed for synthetic fiber hair. Rene of Paris Revive Liquid Enhancement will revive your wig/hairpiece and give it the brand new feel.

Not only helps eliminate frizz while adding luster, texture and volume, but also protects your wig/hairpiece from the daily stresses.

**Rene of Paris Protect Holding Spray**

The final stop in maintaining and styling your wig/hairpiece. This holding spray adds shine while gently, yet firmly, holding your desired style.



ROP Prepare Shampoo  
9950 | 8 oz.  
9954 | 2 oz.

ROP Light Conditioner  
9953 | 8 oz.  
9955 | 2 oz.

ROP Protect Holding Spray  
9952 | 8 oz.  
9956 | 2 oz.

ROP Revive Liquid Enhancement  
9951 | 8 oz.

We are delighted that you have chosen to become one of our valued customers. We appreciate your business as well as any inquiries regarding the following:

**APPLICABILITY:**

1. The following terms and conditions ("Terms") are the only terms which govern the sale of the goods ("Goods") by Aderans Hair Goods, Inc. ("AHG") to its customers (each referred to hereafter as "Buyer," or "You"). Notwithstanding anything herein to the contrary, if a written contract signed by both parties is in existence covering the sale of the Goods covered hereby, the terms and conditions of said contract shall prevail to the extent they are inconsistent with these Terms.

2. These Terms, together with the applicable invoice and the Statement of Policy defined below (collectively, this "Agreement"), comprise the entire agreement between the parties, and supersede all prior or contemporaneous understandings, agreements, negotiations, representations and warranties, and communications, both written and oral. These Terms prevail over any of Buyer's general terms and conditions of purchase regardless of whether or when Buyer has submitted its purchase order or such terms. Acceptance of Buyer's purchase order or fulfillment of Buyer's order does not constitute acceptance of any of Buyer's terms and conditions and does not serve to modify or amend these Terms.

**ACCEPTANCE OF PURCHASE ORDER.** AHG has the right, in its sole discretion, to accept or reject any purchase order issued by You. AHG may accept any purchase order by confirming the order (whether by written confirmation, invoice or otherwise) or by delivering the Goods, whichever occurs first. No purchase order is binding on AHG unless accepted by AHG.

**PRICES.** You shall purchase the Goods from AHG at the prices set forth in AHG's price list in effect at the time that AHG accepts Your purchase order ("Prices"). Prices are exclusive of, and You are solely responsible for, and shall pay, any and all taxes, with respect to, or measured by, the manufacture, sale, shipment, use or Price of the Goods; provided, however, that You shall not be responsible for any taxes imposed on, or with respect to, AHG's income, revenues, gross receipts, personnel or real or personal property or other assets.

**PAYMENT TERMS:** AHG accepts payment by Visa, MasterCard, AMEX, Discover, money order, wire transfer and COD. Upon approval, credit terms may be available.

**CREDIT PURCHASES:** If You wish to apply for an AHG 30-day open account (NET-30), contact Your AHG sales representative and request a credit application.

**SHIPPING/HANDLING:** You will pay for all shipping charges and insurance costs. AHG offers shipping via UPS next day air, 2-3 day air, and ground. There is a handling charge of \$1.00 for all orders. For each purchase order accepted by AHG, AHG may, in its sole discretion, without liability or penalty, make partial shipments of Goods to You. Each shipment will constitute a separate sale and You will pay for the units shipped whether such shipment is in whole or partial fulfillment of a purchase order.

**TRANSFER OF TITLE & RISK OF LOSS:** Title passes to You upon delivery of the Goods to the address You specified in the purchase order. Risk of loss or damage to the Goods passes

to You upon AHG's tender of such units to the carrier at AHG's location in Chatsworth, CA.

**STATEMENT OF POLICY:** You must comply with the Statement of Policy and Guidelines for Using Aderans' Trademarks and Copyrights (the "Statement of Policy") which was provided to You and which may be modified or updated by AHG from time to time in its sole discretion.

**RETURN POLICY:** Returns will not be accepted unless pre-authorized by (AHG). Requests must be made within 30 days from receipt of Goods. Upon approval and receipt of the authorization for return label, Goods meeting the following conditions may be returned for an exchange or direct credit to Your account (freight prepaid by Buyer). NO cash refunds! If an item is to be exchanged, new shipping and handling charges will be added.

1. A copy of Your invoice must accompany all returns. The authorization for return label must be placed on the outside of the box (complete with the authorization number) and Your return address. If not, the box will be refused.

2. Returned Goods must be in MINT CONDITION. Mint condition is defined by AHG as: no missing tags or labels, the hair net is not removed, item(s) are not combed/fluffed or tried on by a customer. All returns must be in original shipping box. There is a restocking fee of \$10.00 for EACH piece returned.

3. AHG has carefully designed its product packaging to protect the product integrity. AHG is not responsible for damage to or problems with any product where the product and/or shipment packaging has been changed per Your request. No returns will be accepted under these conditions.

4. Shipping and handling fees are non-refundable.

5. Any DISCONTINUED items are not returnable.

6. AHG is not responsible for lost return packages.

It is recommended that You keep proper Proof-of-Delivery. Goods not meeting the above stipulations will be refused. AHG will not accept returns more than 30 days after receipt of Goods. If there is a factory defect or an incorrectly shipped item due to our error, a full exchange or credit will be applied directly to Your account. Note: If an item is returned for a "defective" credit and upon examination found not to be defective, credit will only be given for the item's original price (providing it still meets the above standards), and a \$10.00 restocking charge will be applied. Any additional product not authorized for return will be sent back.

**NOTE:** Colors shown in this catalog may not reflect actual color of product. RENÉ OF PARIS is a trademark or registered trademark of Aderans Hair Goods, Inc. and/or Aderans Co., Ltd. in the United States and other countries.

CHRISTINE HEADWEAR and the Christine Headwear logo are trademarks and/or registered trademarks of The Headwear Company in the United States and other countries.





DISTRIBUTED BY

**Aderans**  
HAIR GOODS

9135 Independence Ave.  
Chatsworth, CA 91311 USA  
Toll Free: 800.353.7363  
Fax: 818.885.0134

[www.reneofparis.com](http://www.reneofparis.com)

FOLLOW US ON:

