



NORIKOTM

2024/2025 COLLECTION



“Effortlessly Chic, Unapologetically Powerful”

Introducing the 2024 Noriko Collection, featuring three chic new styles—Beau, Wynn, and Briar—and four stunning colors: Frosted Mushroom-R, Sandy Salt, Sparkling Mocha-R, and Spiced Brown. Crafted with our innovative VeluSoft: Lace Cap for unmatched comfort and a seamless, natural look, this collection redefines elegance and wearability.

Color and style shown from left to right: Wynn in Sparkling Mocha-R, Briar in Spiced Brown, Beau in Sandy Salt



NEW!

BEAU 1727
PAGE 8



NEW!

WYNN 1728
PAGE 12



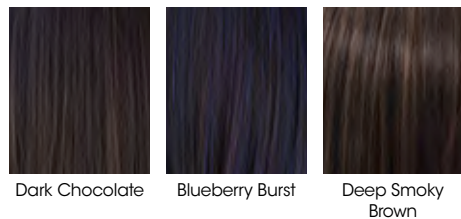
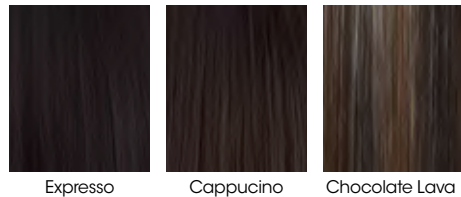
NEW!

BRIAR 1729
PAGE 10

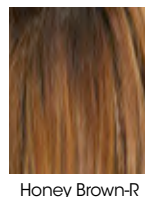
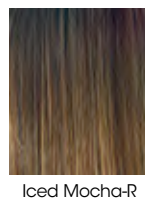
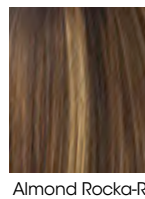
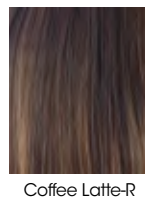
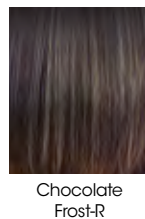
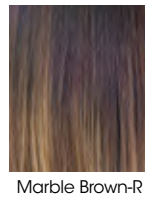
- 6-7 AVAILABLE COLORS
- 8-13 NEW STYLES
- 14-43 WIG COLLECTION
- 44-45 ACCESSORIES

LACE FRONT + LACE PART							MONOFILAMENT	
	14 EMERY 1714	14 HARLEE 1718	15 KADE 1723	16 MERRILL 1726	17 ZANE 1717	17 ZION 1712		18 JOLIE 1662
MACHINE-MADE							LARGE CAP	
	18 KENZIE 1684	19 RYAN 1653	19 SHILO 1654	20 ANGELICA PM 1696	21 ANGELICA LARGE CAP 1702	21 REESE LARGE CAP 1703		22 SKY LARGE CAP 1699
MACHINE-MADE							MACHINE-MADE	
	23 ALVA 1715	23 ANGELICA 1625	24 BRETT 1720	25 BILLIE 1701	25 CARRIE 1674	26 CLAIRE 1647		26 CORY 1633
MACHINE-MADE							MACHINE-MADE	
	27 DOLCE 1686	27 DREW 1631	28 EVA 1672	29 HARLOW 1721	29 IVY 1679	30 JACKSON 1669		30 KATE 1668
MACHINE-MADE							MACHINE-MADE	
	31 LEXY 1642	32 MARIAH 1613	32 MASON 1632	33 MAY 1673	33 MEADOW 1719	34 MEGAN 1607		35 MILLIE 1655
MACHINE-MADE							MACHINE-MADE	
	35 NORI 1682	36 NOUR 1724	36 PAM 1606	37 REESE 1660	37 ROBIN 1639	38 RONI 1641		38 SALLY 1616
MACHINE-MADE							HAIR ENHANCEMENT	
	39 SANDIE 1648	39 SEVILLE 1685	40 SKY 1649	40 STORM 1722	41 ZEAL 1725	42 MALIBU 1716		43 MILAN 1658

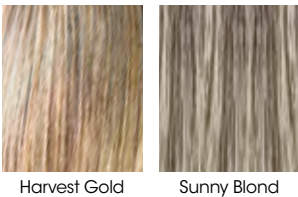
BRUNETTES



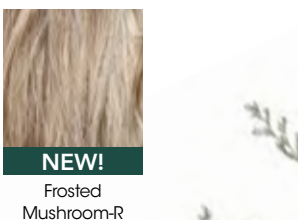
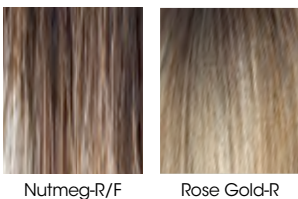
HYBRANT BRUNETTES



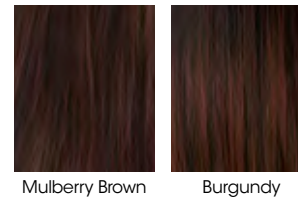
BLONDS



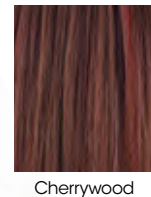
HYBRANT BLONDS



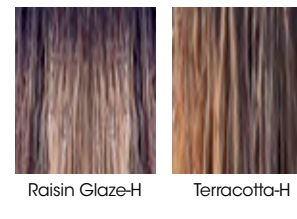
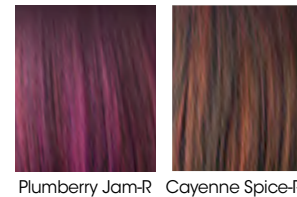
REDS



HYBRANT UNDERLIGHTS



HYBRANT REDS



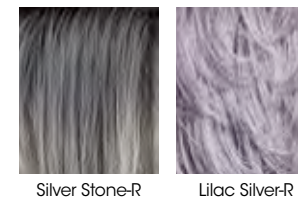
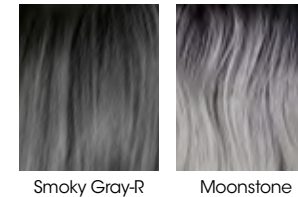
HYBRANT PASTELS



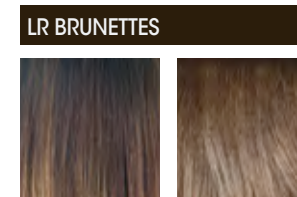
GRAYS



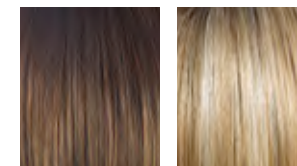
HYBRANT GRAYS



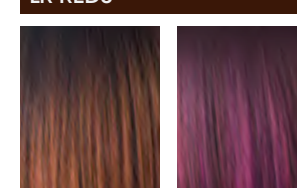
LR COLORS (LONG ROOTED)



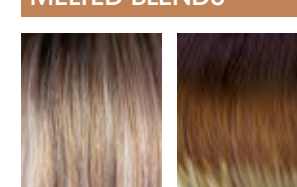
LR BLONDS



LR REDS



MELTED BLENDS



AVAILABLE COLORS

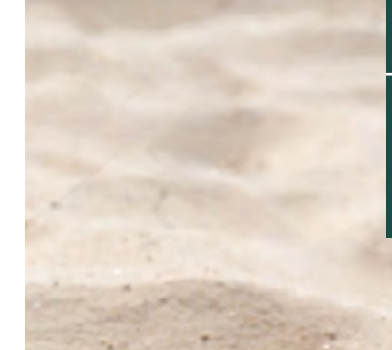
MELTED BLENDS. Our dazzling gradient tones. Modern, natural salon-like finish. Available in 4 contemporary colors.

LONG ROOTED COLORS. Offer a dramatic ombré style root with a gradual lightening toward the ends.

SPECIAL ORDERS: If you don't see a favorite style in this catalog or if you want a style designed in a different color, just contact your AHG sales consultant and ask about placing a "special order." We will do our very best to accommodate your requests! **1.800.353.7363**



Introducing our newest innovation in hair technology – **NATURAL MOVEMENT FIBER (NM)**
This revolutionary fiber features a blend of heat friendly fiber and synthetic fiber to give you the ultimate styling experience.



BEAU 1727

This straight ready-to-wear wig is a sleek, polished, stacked pixie bob. Great for those who prefer an easy, sophisticated style.

Color Shown:
 Sparkling Mocha-R (main) **NEW!**
 Sandy Salt (top inset) **NEW!**
 Spiced Brown (bottom insets) **NEW!**

Cap: Lace Front + Partial Monofilament
 Fringe: 8.9" (22.5 cm)
 Crown: 6.9" (17.5 cm)
 Nape: 3.0" (7.5 cm)
 Weight: 3.0 oz (86 g)

AVAILABLE COLORS:

BRUNETTES
 Dark Chocolate
 Ginger Brown
 Medium Brown

HYBRANT BRUNETTES

Sparkling Mocha-R **NEW!**
 Chocolate Frost-R
 Coffee Latte-R
 Maple Sugar-R
 Marble Brown-R

BLONDS

Creamy Blond
 Spring Honey
 Platinum Pearl

HYBRANT BLONDS

Frosted Mushroom-R **NEW!**
 Milky Opal-R
 Champagne-R
 Creamy Toffee-R
 Honey Wheat-R
 Sugar Cane-R
 Mochaccino-R
 Nutmeg-F
 Rose Gold-R

HYBRANT REDS

Spiced Brown **NEW!**
 Almond Spice-R
 Copper Glaze-R
 Irish Spice-R
 Raspberry Ice-R

GRAYS

Sandy Silver™
 Silver Stone™
 Sandy Salt **NEW!**
 60

HYBRANT GRAYS

Lilac Silver-R

MELTED BLENDS

Melted Marshmallow
 Melted Cinnamon





BRIAR 1729

The effortless side swept fringe adds movement and flatters all face type. Its lace front will give you a natural look with the partial monofilament base.

Color Shown:

Frosted Mushroom-R (main) **NEW!**
 Sparkling Mocha-R, Frosted Mushroom-R (top inset) **NEW!**
 Melted Cinnamon (bottom, left inset)
 Sparkling Mocha-R (bottom, right inset) **NEW!**

Cap: Lace Front + Partial
 Monofilament
 Fringe: 5.9" (15 cm)
 Crown: 10.6" (27 cm)
 Nape: 3.9" (10 cm)
 Weight: 3.0 - 3.17 oz (85-90 g)

AVAILABLE COLORS:

BRUNETTES
 Dark Chocolate
 Ginger Brown
 Medium Brown

HYBRANT BRUNETTES

Sparkling Mocha-R **NEW!**
 Chocolate Frost-R
 Coffee Latte-R
 Maple Sugar-R
 Marble Brown-R

BLONDS
 Creamy Blond
 Platinum Pearl
 Spring Honey

HYBRANT BLONDS

Milky Opal-R
 Champagne-R
 Creamy Toffee-R
 Honey Wheat-R
 Mochaccino-R
 Nutmeg-F
 Rose Gold-R
 Sugar Cane-R
 Frosted Mushroom-R **NEW!**

REDS
 Spiced Brown **NEW!**

HYBRANT REDS
 Almond Spice-R
 Copper Glaze-R
 Irish Spice-R
 Raspberry Ice-R

GRAYS
 Sandy Salt **NEW!**
 Sandy Silver™
 Silver Stone™
 60

HYBRANT GRAYS
 Lilac Silver-R

MELTED BLENDS
 Melted Cinnamon
 Melted Marshmallow





WYNN 1728

This straight ready-to-wear wig is a chin length bob. This smooth textured layers with feminine bangs create an impeccable standard style.

Color Shown:

- Lilac Silver-R (top left inset)
- Sparkling Mocha-R (left) **NEW!**
- Spiced Brown (right) **NEW!**

- Cap: Lace Front + Partial Monofilament
- Fringe: 3.9" (10 cm)
- Crown: 6.9" 8.3" (21 cm)
- Nape: 3.0" (7.5 cm)
- Weight: 3.17 oz (90 g)

AVAILABLE COLORS:

BRUNETTES

- Dark Chocolate
- Ginger Brown
- Medium Brown

BLENDS

- Creamy Blond
- Platinum Pearl
- Spring Honey

- HYBRANT BRUNETTES**
- Sparkling Mocha-R **NEW!**
- Chocolate Frost-R
- Coffee Latte-R
- Maple Sugar-R
- Marble Brown-R

HYBRANT BLONDS

- Frosted Mushroom-R **NEW!**
- Milky Opal-R
- Champagne-R
- Creamy Toffee-R
- Honey Wheat-R
- Mochaccino-R
- Nutmeg-F
- Rose Gold-R
- Sugar Cane-R

REDS

- Spiced Brown **NEW!**

HYBRANT REDS

- Irish Spice-R
- Razberry Ice-R
- Copper Glaze-R
- Almond Spice-R

GRAYS

- Sandy Salt **NEW!**
- Sandy Silver™
- Silver Stone™
- 60

HYBRANT GRAYS

- Lilac Silver-R

MELTED BLENDS

- Melted Cinnamon
- Melted Marshmallow



EMERY 1714

This chin-length, layered bob creates a modern yet classical look. The soft body and natural lift flatters any face shape.

Color Shown:
Kandy Brown-LR

Cap: Lace front + Lace part
Fringe: 7.1" (18cm)
Crown: 6.3" (16cm)
Nape: 2.4" (6cm)
Weight: 2.9oz (81g)

AVAILABLE COLORS:
BRUNETTES:
Dark Chocolate
Medium Brown
Deep Smoky Brown

HYBRANT BRUNETTES:
Iced Mocha-R

BLONDS:
Peach Gold

HYBRANT BLONDS:
Spring Honey-R
Sugar Cane-R
Creamy Toffee-R

REDS:
Red Brown

HYBRANT REDS:
Razberry Ice-R

LR BRUNETTES:
Marble Brown-LR
Kandy Brown-LR

GRAYS:
Silver Stone™
Simply White

HYBRANT GRAYS:
Moonstone



HARLEE 1718

The soft-bodied texture of this long layered style is sure to provide a boost of daily confidence.

Color Shown:
Melted Marshmallow

Cap: Lace front + Lace part
Weight: 4.4oz (125g)
Fringe: 11" (28cm)
Crown: 8.3" (21cm)
Nape: 8.7" (22cm)

AVAILABLE COLORS:
BRUNETTES:
Espresso
Cappuccino
Coffee Latte
Ginger Brown
Medium Brown

HYBRANT BRUNETTES:
Marble Brown-R
Chocolate Frost-R
Honey Brown-R
Iced Mocha-R

LR BRUNETTES:
Kandy Brown-LR
Milk Tea-LR

BLONDS:
Creamy Blond
Spring Honey-T

HYBRANT BLONDS:
Champagne-R
Creamy Toffee-R
Mochaccino-R
Sugar Cane-R
Rose Gold-R
Seashell Blond-R
Desert Sand-R

REDS:
Chestnut

MELTED:
Melted Coconut
Melted Marshmallow

HYBRANT GRAYS:
Moonstone



KADE 1723

The hair is expertly layered, adding movement and texture to the overall style. These layers create a sense of depth and dimension, allowing the hair to cascade beautifully down your shoulders.

Color Shown:
Melted Cinnamon

Cap: Extended lace front + Partial lace top,
Extended nape
Weight: 3.5oz (99g)
Fringe: 4.7-6.7" (12-17cm)
Crown: 8.3" (21cm)
Nape: 6.7" (17cm)

AVAILABLE COLORS:
BRUNETTES:
Brown Sable
Dark Chocolate

HYBRANT BRUNETTES:
Chocolate Frost-R
Coffee Latte-R
Iced Mocha-R
Marble Brown-R

BLONDS:
Creamy Blond
Ice Blond
Platinum Pearl

HYBRANT BLONDS:
Champagne-R
Creamy Toffee-R
Milky Opal-R
Rose Gold-R
Sugar Cane-R

HYBRANT REDS:
Copper Glaze-R

GRAYS:
Icy Caviar
Champagne Silver
Silver Stone
MELTED BLENDS:
Melted Cinnamon
Melted Marshmallow





MERRILL 1726

Indulge in the luxurious feel of Merrill's "New Movement" fiber and experience the confidence that comes with a flawless, salon-worthy hairstyle.



NATURAL
MOVEMENT
FIBER

Color Shown:
NM Cashmere Brown-SR

Cap: Extended lace front + Partial
lace top, Extended nape
Weight: 3.52oz (100g)
Fringe: 10.6" (27cm)
Crown: 12.2" (31cm)
Nape: 5.3" (13.5cm)

AVAILABLE COLORS:
NM BRUNETTES:
NM Auburn Sugar
NM Dark Chocolate
NM Coffee Latte
NM Marble Brown
NM Medium Brown
NM Espresso
NM Ginger Brown

NM HYBRANT BRUNETTES:
NM Cashmere Brown-SR

NM BLONDS:
NM Creamy Blond
NM Creamy Toffee
NM Harvest Gold
NM Mochaccino
NM Spring Honey

NM HYBRANT BLONDS:
NM Champagne-R

NM GRAYS:
NM Sandy Silver
NM Silver Stone
NM 60
NM Icy Caviar



ZANE 1717

Well-defined layers that fit any face shape. Tapered side-swept fringe, in a flattering shoulder-length style.

Color Shown:
Kandy Brown-LR

Creamy Blond
Spring Honey-T

Cap: Lace front+ Lace part
Weight: 4.0oz (113g)
Fringe: 6.9" (17.5cm)
Crown: 8.6" (22.5cm)
Nape: 4.9" (12.5cm)

HYBRANT BLONDS:
Champagne-R
Creamy Toffee-R
Mochaccino-R
Sugar Cane-R
Rose Gold-R
Seashell Blond-R
Desert Sand-R

AVAILABLE COLORS:
BRUNETTES:
Cappucino
Medium Brown
Deep Smoky Brown
Dark Chocolate

REDS:
Chestnut

HYBRANT BRUNETTES:
Marble Brown-R
Coffee Latte
Chocolate Frost-R
Iced Mocha-R

MELTED:
Melted Marshmallow

GRAYS:
Silver Stone™
Simply White

LR BRUNETTES:
Kandy Brown-LR
Milk Tea-LR

HYBRANT GRAYS:
Silver Stone-R

BLONDS:

ZION 1712

Get a stylish modern look with this sleek bob with shaggy ends.

Color Shown:
Honey Brown-R

HYBRANT BLONDS:
Champagne- R
Mochaccino-R

Cap: Lace front + Lace part
Fringe: 8.26" (21cm)
Crown: 9.05" (23cm)
Nape: 3.93" (10cm)
Weight: 3.8oz (108g)

REDS:
Mulberry Brown

HYBRANT REDS:
Razberry Ice-R

AVAILABLE COLORS:
BRUNETTES:
Deep Smoky Brown
Ginger Brown

MELTED:
Melted Marshmallow

GRAYS:
Platinum Pearl

HYBRANT BRUNETTES:
Marble Brown-R
Coffee Latte
Honey Brown-R

HYBRANT GRAYS:
Smoky Gray-R





JOLIE 1662

Add texture and volume with this perfectly layered, modern bob.

Color Shown:
Coffee Latte-R

Cap: Monofilament Top
Fringe: 5.5" (14cm)
Crown: 5.5" (14cm)
Nape: 3.9" (10cm)
Weight: 3.49oz (99g)

AVAILABLE COLORS:
BRUNETTES:

Chocolate Swirl
Ginger Brown
Marble Brown
Toasted Brown

HYBRANT BRUNETTES:
Coffee Latte-R
Chocolate Frost-R
Maple Sugar-R

BLONDS:
Spring Honey
Creamy Blond

HYBRANT BLONDS:
Mocha-H
Mochaccino-R
Nutmeg-F
Creamy Toffee-R
Champagne-R

HYBRANT REDS:
Auburn Sugar-R
Razberry Ice-R

GRAYS:
Sandy Silver™
Silver Stone™



KENZIE 1684

Stylish cut featuring long, textured layers on the back and sides and sweeping bangs.

Color Shown:
Chocolate Swirl

Cap: Monofilament Top
Fringe: 5.1 - 7.1" (13-18cm)
Crown: 10.6" (27cm)
Nape: 8.7" (22cm)
Weight: 4.8oz (136g)

AVAILABLE COLORS:
BRUNETTES:
Dark Chocolate
Chocolate Swirl
Ginger Brown
Marble Brown
Toasted Brown

HYBRANT BRUNETTES:
Coffee Latte-R
Maple Sugar-R

BLONDS:
Spring Honey
Creamy Blond

HYBRANT BLONDS:
Mochaccino-R
Nutmeg-R
Sugar Cane-R
Creamy Toffee-R

HYBRANT REDS:
Auburn Sugar-R
Copper Glaze-R



RYAN 1653

Be bold with this eye-catching feathered, layered cut.

Color Shown:
Spring Honey

Cap: Monofilament Top
Fringe: 3.9" (10cm)
Crown: 5.1 (13cm)
Nape: 3.5" (9cm)
Weight: 2.6oz (74g)

AVAILABLE COLORS:
BRUNETTES:
Chocolate Swirl
Ginger Brown
Marble Brown
Toasted Brown

HYBRANT BRUNETTES:
Iced Mocha-R
Maple Sugar-R

HYBRANT BLONDS:
Mochaccino-R
Nutmeg-F
Creamy Toffee-R

REDS:
Chestnut

HYBRANT REDS:
Auburn Sugar-R



SHILO 1654

Long, soft layers create great movement in this flirtatious style.

Color Shown:
Almond Spice-R

Cap: Monofilament Top
Fringe: 8.1" (20.5cm)
Crown: 15" (38cm)
Nape: 14.8" (37.5cm)
Weight: 5.7oz (160g)

AVAILABLE COLORS:
BRUNETTES:
Espresso
Cappuccino
Dark Chocolate
Chocolate Swirl
Marble Brown
Medium Brown

BLONDS:
Spring Honey
Creamy Blond

HYBRANT BLONDS:
Mocha-H
Nutmeg-F
Sandlewood-H
Champagne-R

REDS:
Chestnut

HYBRANT REDS:
Almond Spice-R

ANGELICA PM 1696

One of our NORIKO best sellers now available in a partial monofilament cap.

Long, textured layers fall to mid-back in this full, "flowy" design.

Color Shown: Chocolate Swirl

Cap: Partial Monofilament Top
Fringe: 8.5" (21.5cm)
Crown: 16.1" (41cm)
Nape: 16.1" (41cm)
Weight: 6.7oz (192g)

AVAILABLE COLORS:

BRUNETTES:

- Cappucino
- Dark Chocolate
- Ginger Brown
- Kahlua Blast
- Medium Brown
- Marble Brown
- Chocolate Swirl

HYBRANT BLONDS:

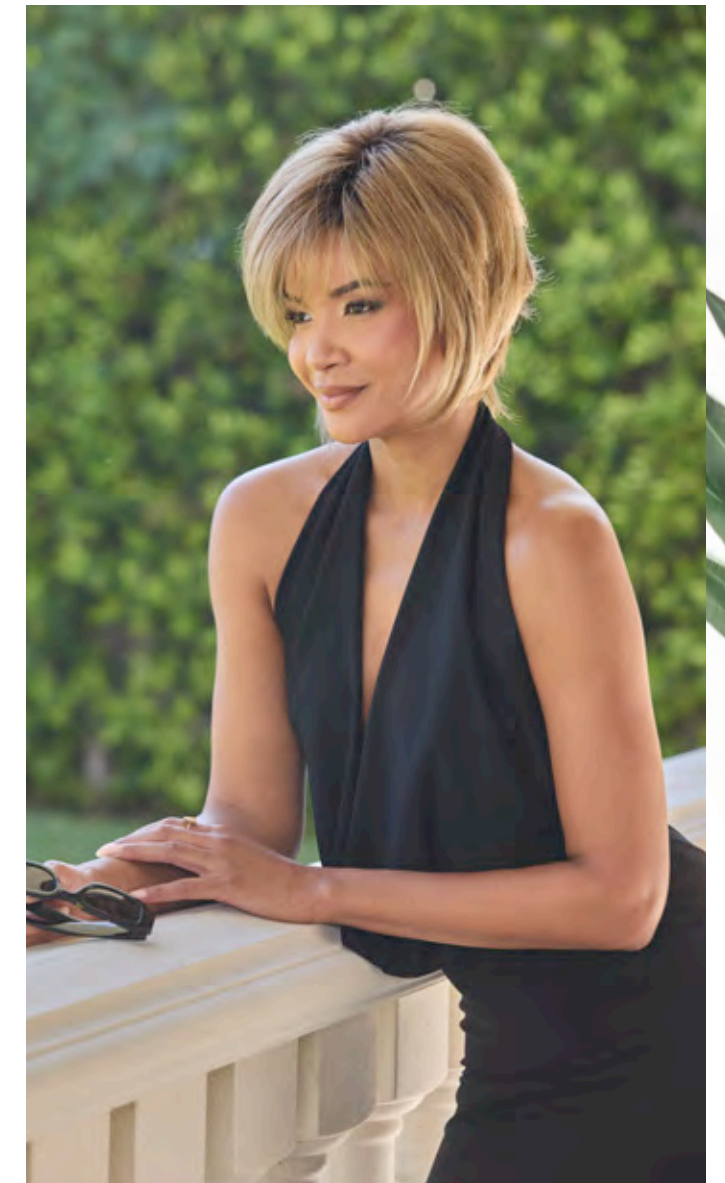
- Mochaccino-R
- Honey Wheat-R
- Creamy Toffee-R
- Spring Honey-R
- Champagne-R

LR BLONDS:

- Marble Brown-LR
- Macadamia-LR

LR REDS:

- Plumberry Jam-LR



ANGELICA LARGE CAP 1702

Top selling style available in a larger cap size - Approximately 1.5" larger than the original size!

Color Shown: Toasted Brown

Cap: Large Machine-Made
Fringe: 7.3" (18.5cm)
Crown: 16.1" (41cm)
Nape: 16.1" (41cm)
Weight: 6.9oz (195.6g)

AVAILABLE COLORS:

BRUNETTES:

- Cappucino
- Dark Chocolate
- Chocolate Swirl
- Ginger Brown
- Toasted Brown
- Medium Brown

BLONDS:

- Platinum Pearl

HYBRANT BLONDS:

- Nutmeg-F
- Creamy Toffee-R
- Spring Honey-R
- Champagne-R

HYBRANT UNDERLIGHTS:

- Cherrywood

LR BRUNETTES:

- Marble Brown-LR

LR BLONDS:

- Macadamia-LR

LR REDS:

- Plumberry Jam-LR

REESE LARGE CAP 1703

Top selling style available in a larger cap size - Approximately 1.5" larger than the original size!

Color Shown: Spring Honey-R

Cap: Large Machine-Made
Fringe: 4.9" (12.5cm)
Crown: 5.7" (14.5cm)
Nape: 4.1" (10.5cm)
Weight: 3.0oz (85.05g)

AVAILABLE COLORS:

BRUNETTES:

- Chocolate Swirl
- Ginger Brown

HYBRANT BRUNETTES:

- Marble Brown-R
- Coffee Latte-R
- Chocolate Frost-R
- Iced Mocha-R
- Maple Sugar-R

HYBRANT BLONDS:

- Mochaccino-R
- Nutmeg-F
- Creamy Toffee-R
- Spring Honey-R
- Champagne-R

HYBRANT UNDERLIGHTS:

- Cherrywood

REDS:

- Chestnut



SKY LARGE CAP 1699

Top selling style now available in a larger cap size – approximately 1.5” larger than the original size!

Color Shown:
Raisin Glaze-H

Cap: Large Machine-Made
Fringe: 5.3” (13.5cm)
Crown: 5.3” (13.5cm)
Nape: 3.9” (10cm)
Weight: 2.8oz (75g)

AVAILABLE COLORS:
BRUNETTES:
Cappucino
Dark Chocolate
Chocolate Swirl
Ginger Brown
Kahlua Blast
Marble Brown

HYBRANT BRUNETTES:
Coffee Latte-R
Iced Mocha-R

BLONDS:
Spring Honey
Creamy Blond

HYBRANT BLONDS:
Mochaccino-R
Nutmeg-F
Sugar Cane-R
Creamy Toffee-R
Champagne-R

REDS:
Chestnut

HYBRANT REDS:
Raisin Glaze-H
Almond Spice-R

GRAYS:
Sandy Silver™
Silver Stone™

ANGELICA 1625

Long, textured layers fall to mid-back in this full “flowy” design.

Color Shown:
Iced Mocha-R

Cap: Machine-Made
Fringe: 7.9” (20cm)
Crown: 16” (40.5cm)
Nape: 15.7” (40cm)
Overall: 26” (66cm)
Weight: 6.67oz (189g)

AVAILABLE COLORS:
BRUNETTES:
Espresso
Cappucino
Dark Chocolate
Chocolate Swirl
Ginger Brown
Marble Brown
Toasted Brown
Medium Brown
Golden Brown

HYBRANT BRUNETTES:
Almond Rocka-R
Iced Mocha-R
Maple Sugar-R

BLONDS:
Vanilla Lush
Spring Honey
Creamy Blond

HYBRANT BLONDS:
Butter Pecan-R
Mocha-H
Mochaccino-R
Honey Wheat-R
Nutmeg-F
Sugar Cane-R
Creamy Toffee-R
Sandalwood-H
Champagne-R

REDS:
Chestnut

HYBRANT REDS:
Raisin Glaze-H
Almond Spice-R
Auburn Sugar-R
Razberry Ice-R
Copper Glaze-R

LR BLONDS:
Banana Split-LR
Macadamia-LR

LR REDS:
Crimson-LR

HYBRANT PASTELS:
Illumina-R
Bubblegum-R



ALVA 1715

Trendsetting, collar-length bob with a tapered fringe. The layers and length combine to create natural movement and a versatile look.

Color Shown: Moonstone

Cap: Feather Light Machine-Made
Fringe: 3.9” (10cm)
Crown: 9.4” (24cm)
Nape: 3.9” (10cm)
Weight: 3.7 - 3.9oz (105-110g)

AVAILABLE COLORS:
BRUNETTES:
Espresso
Cappucino
Dark Chocolate
Medium Brown
Deep Smoky Brown
Ginger Brown

HYBRANT BRUNETTES:
Coffee Latte
Chocolate Frost-R
Marble Brown-R
Iced Mocha-R
Honey Brown-R

BLONDS:
Creamy Blond
Peach Gold

HYBRANT BLONDS:
Mochaccino-R
Champagne-R
Spring Honey-R
Sugar Cane-R
Creamy Toffee-R

REDS:
Red Brown
Chestnut

LR BRUNETTES:
Kandy Brown-LR

MELTED:
Melted Marshmallow

GRAYS:
Silver Stone™
Simply White

HYBRANT GRAYS:
Moonstone





BRETT 1720

A simply superb, layered pixie. This modern, stylish short is a daily must-have.

Color Shown:
Desert Sand-R

Cap: Feather Light Machine-Made
Fringe: 4.3" (11cm)
Crown: 3.9" (10cm)
Nape: 2.8" (7cm)
Weight: 2.4-2.5oz (68-72g)

BRUNETTES
Brown Sable
Cappucino
Coffee Latte
Dark Chocolate

HYBRANT BRUNETTES
Chocolate Frost-R
Iced Mocha-R
Marble Brown-R

BLONDS
Creamy Blond
Frosti Blond
Harvest Gold
Spring Honey-T
Sugar Cane

HYBRANT BLONDS
Champagne-R
Creamy Toffee-R
Desert Sand-R
Mochaccino-R

Nutmeg-F
Rose Gold-R
Seashell Blond-R

HYBRANT REDS
Razberry Ice-R

MELTED BLENDS
Melted Marshmallow

GRAYS
Champagne Silver
Sandy Silver™
Silver Stone™
Simply White

HYBRANT GRAYS
Silver Stone-R



BILLIE 1701

Short, spiky, and flattering style for a decidedly edgy look.

Color Shown: Marble Brown-R
Cap: Feather Light Machine-Made
Fringe: 3.5" (9cm)
Crown: 3.5" (9cm)
Nape: 1.4" (3.5cm)
Weight: 2.3oz (65.2g)

AVAILABLE COLORS:
BRUNETTES:
Cappucino
Ginger Brown

HYBRANT BRUNETTES:
Marble Brown-R
Coffee Latte-R
Chocolate Frost-R

BLONDS:
Creamy Blond

HYBRANT BLONDS:
Mochaccino-R
Nutmeg-F
Creamy Toffee-R
Champagne-R

HYBRANT UNDERLIGHTS:
Cherrywood

HYBRANT REDS:
Razberry Ice-R

LR REDS:
Plumerry Jam-R

HYBRANT PASTELS:
Illumina-R
Bubblegum-R

GRAYS:
Silver Stone™



CARRIE 1674

This tousled, curly style falls just below the shoulder and has a soft, face-framing fringe.

Color Shown:
Almond Rocka-R

Cap: Machine-Made
Fringe: 7" (18cm)
Crown: 10.4" (26.5cm)
Nape: 7.5" (19cm)
Weight: 5.2oz (147g)

AVAILABLE COLORS:
BRUNETTES:
Espresso
Dark Chocolate
Cappucino
Ginger Brown
Marble Brown
Toasted Brown

REDS:
Garnet Glaze

HYBRANT BRUNETTES:
Coffee Latte-R
Almond Rocka-R
Maple Sugar-R

BLONDS:
Spring Honey
Creamy Blond

HYBRANT BLONDS:
Butter Pecan-R
Mochaccino-R
Honey Wheat-R
Nutmeg-R
Sugar Cane-R
Creamy Toffee-R
Champagne-R

HYBRANT REDS:
Almond Spice-R
Auburn Sugar-R
Irish Spice-R
Copper Glaze-R



CLAIRE 1647

Short, layered cut flips at the collar and has soft, textured edges.

Color Shown:
Maple Sugar-R

Cap: Machine-Made
Fringe: 5.5" (14cm)
Crown: 8.3" (21cm)
Nape: 5.9" (15cm)
Weight: 3.2oz (92g)

AVAILABLE COLORS:
BRUNETTES:
Cappucino
Dark Chocolate
Chocolate Swirl
Ginger Brown
Marble Brown
Toasted Brown
Medium Brown

HYBRANT BRUNETTES:
Almond Rocka-R
Iced Mocha-R
Maple Sugar-R

BLONDS:
Harvest Gold
Strawberry Swirl
Vanilla Lush
Caramel Cream
Spring Honey
Creamy Blond

HYBRANT BLONDS:
Mocha-H
Mochaccino-R
Honey Wheat-R
Nutmeg-F
Sugar Cane-R
Creamy Toffee-R
Sandalwood-H
Champagne-R

REDS:
Chestnut

HYBRANT REDS:
Raisin Glaze-H
Terracotta-H
Almond Spice-R
Razberry Ice-R
Copper Glaze-R



CORY 1633

This classic bob frames the face with a soft, textured fringe.

Color Shown:
Sandy Silver™

Cap: Machine-Made
Fringe: 3.1" (8cm)
Crown: 8.5" (21.5cm)
Nape: 1.8" (4.5cm)
Weight: 3.1oz (89g)

AVAILABLE COLORS:
BRUNETTES:
Espresso
Cappucino
Dark Chocolate
Ginger Brown
Marble Brown
Toasted Brown
Medium Brown
Light Chocolate
Pecan Brown

BLONDS:
Harvest Gold
Frosti Blond
Strawberry Swirl
Vanilla Lush
Caramel Cream
Spring Honey
Gold Blond
Creamy Blond

REDS:
Chestnut

GRAYS:
Sandy Silver™
Silver Stone™



DOLCE 1686

Voluminous wavy layers softly graduate to the chin creating a chic, flirty bob.

Color Shown:
Sugar Cane-R

Cap: Machine-Made
Fringe: 6.1" (15.5cm)
Crown: 7.48" (19cm)
Nape: 2.8" (7cm)
Weight: 2.9oz (83g)

AVAILABLE COLORS:
BRUNETTES:
Dark Chocolate
Ginger Brown
Marble Brown

HYBRANT BRUNETTES:
Chocolate Frost-R
Coffee Latte-R
Almond Rocka-R
Maple Sugar-R

BLONDS:
Creamy Blond

HYBRANT BLONDS:
Mochaccino-R
Sugar Cane-R
Creamy Toffee-R
Nutmeg-R
Champagne-R

HYBRANT REDS:
Razberry Ice-R

LR REDS:
Crimson-LR

GRAYS:
Silver Stone™



DREW 1631

Make a bold statement with this "edgy" look created using an overall point-cut layering technique.

Color Shown:
Nutmeg-F

Cap: Machine-Made
Fringe: 2.8" (7cm)
Crown: 3.4" (8.5cm)
Nape: 2.4" (6cm)
Weight: 2.3oz (66g)

AVAILABLE COLORS:
BRUNETTES:
Dark Chocolate
Ginger Brown
Marble Brown

HYBRANT BRUNETTES:
Chocolate Frost-R
Iced Mocha-R
Maple Sugar-R

BLONDS:
Harvest Gold
Frosti Blond
Strawberry Swirl
Spring Honey
Creamy Blond

HYBRANT BLONDS:
Mocha-H
Mochaccino-R
Nutmeg-F
Creamy Toffee-R
Champagne-R

REDS:
Burgundy Rosa

HYBRANT REDS:
Copper Glaze-R

GRAYS:
Sandy Silver™
Silver Stone™

EVA 1672

This tightly tapered, inverted bob has soft, top layers that fall into a side-swept fringe.

Color Shown:
Midnite Pearl

Cap: Machine-Made
Fringe: 5.1" (13cm)
Crown: 4.5" (11.5cm)
Nape: 2" (5cm)
Weight: 2.15oz (61g)

AVAILABLE COLORS:
BRUNETTES:
Dark Chocolate
Ginger Brown
Marble Brown

HYBRANT BRUNETTES:
Coffee Latte-R
Iced Mocha-R

BLONDS:
Spring Honey
Creamy Blond

HYBRANT BLONDS:
Mochaccino-R
Honey Wheat-R
Nutmeg-R
Sugar Cane-R
Creamy Toffee-R

HYBRANT REDS:
Almond Spice-R
Irish Spice-R

GRAYS:
Midnite Pearl
Sandy Silver™
Silver Stone™



HARLOW 1721

Medium long, polished layered style. Versatility of layers create volume and body with a flirtatious finish.

Color Shown:
Brown Sable

Cap: Feather Light Machine-Made
Fringe: 7.5" (19cm)
Crown: 11" (28cm)
Nape: 9.4" (24cm)
Weight: 4.7- 5.0oz (132-141g)

BRUNETTES
Brown Sable
Dark Chocolate
Coffee Latte

HYBRANT BRUNETTES
Chocolate Frost-R
Iced Mocha-R
Marble Brown-R

BLONDS
Creamy Blond
Spring Honey-T

HYBRANT BLONDS
Champagne-R
Mochaccino-R
Seashell Blond-R
Nutmeg-F
Sugar Cane-R
Creamy Toffee-R
Desert Sand-R

REDS
Chestnut

HYBRANT REDS
Raspberry Ice-R
Auburn Sugar-R

MELTED BLENDS
Melted Marshmallow

GRAYS
Silver Stone™

HYBRANT GRAYS
Silver Stone-R



Color Shown:
Mochaccino-R

Cap: Machine-Made
Fringe: 3.7" (9.5cm)
Crown: 4.7" (12cm)
Nape: 2" (5cm)
Weight: 2.29oz (65g)

AVAILABLE COLORS:
BRUNETTES:
Marble Brown

HYBRANT BRUNETTES:
Coffee Latte-R
Chocolate Frost-R
Almond Rocka-R
Iced Mocha-R

BLONDS:
Spring Honey
Creamy Blond
Platinum Pearl

HYBRANT BLONDS:
Mochaccino-R
Nutmeg-R
Sugar Cane-R
Creamy Toffee-R
Champagne-R

REDS:
Chestnut

GRAYS:
Sandy Silver™
Silver Stone™

IVY 1679

Edgy, page-boy style is cut with a round, heavy fringe.



JACKSON 1669

This sleek, shoulder length style features flattering, face-framing layers.

Color Shown:
Sugar Cane-R

Cap: Machine-Made
Fringe: 6.9" (17.5cm)
Crown: 9.1" (23cm)
Nape: 8.3" (21cm)
Weight: 4.27oz (121g)

AVAILABLE COLORS:
BRUNETTES:

Espresso
Cappucino
Dark Chocolate
Chocolate Swirl
Java Frost
Ginger Brown
Marble Brown
Toasted Brown

HYBRANT BRUNETTES:

Chocolate Frost-R
Almond Rocka-R
Iced Mocha-R
Maple Sugar-R

BLONDS:

Strawberry Swirl
Spring Honey
Creamy Blond

HYBRANT BLONDS:

Butter Pecan-R
Mochaccino-R
Honey Wheat-R
Nutmeg-R
Sugar Cane-R
Creamy Toffee-R
Champagne-R

REDS:

Chestnut

HYBRANT REDS:

Auburn Sugar-R
Razberry Ice-R
Irish Spice-R
Copper Glaze-R

GRAYS:

Silver Stone™



KATE 1668

Geometric, fringed bob is complemented by razor-finished tiers and arched ends.

Color Shown:
Razberry Ice-R

Cap: Machine-Made
Fringe: 5.9" (15cm)
Crown: 4.7" (12cm)
Nape: 3.5" (9cm)
Weight: 2.54oz (72g)

AVAILABLE COLORS:
BRUNETTES:

Dark Chocolate
Chocolate Swirl
Java Frost
Marble Brown

HYBRANT BRUNETTES:

Chocolate Frost-R
Iced Mocha-R
Maple Sugar-R

BLONDS:

Creamy Blond

HYBRANT BLONDS:

Butter Pecan-R
Mochaccino-R
Nutmeg-R
Creamy Toffee-R
Champagne-R

HYBRANT REDS:

Almond Spice-R
Razberry Ice-R
Irish Spice-R

GRAYS:

Sandy Silver™



LEXY 1642

Carefree layered cut with whimsical, flipped ends.

Color Shown:
Mocha-H

Cap: Machine-Made
Fringe: 3.9" (10cm)
Crown: 4.3" (11cm)
Nape: 4.7" (12cm)
Weight: 2.86oz (81g)

AVAILABLE COLORS:

BRUNETTES:
Dark Chocolate
Ginger Brown
Marble Brown
Toasted Brown

BLONDS:

Harvest Gold
Strawberry Swirl
Spring Honey
Creamy Blond

HYBRANT BLONDS:

Mocha-H
Nutmeg-F
Sandalwood-H
Champagne-R

REDS:

Chestnut

HYBRANT REDS:

Raisin Glaze-H
Terracotta-H



MARIAH 1613

Soft, tousled curls frame this chin-length bob.

Color Shown:
Creamy Blond

Cap: Machine-Made
Fringe: 4.1" (10.5cm)
Crown: 4.9" (12.5cm)
Nape: 4.3" (11cm)
Weight: 3.21oz (91g)

AVAILABLE COLORS:
BRUNETTES:
Cappuccino
Dark Chocolate
Ginger Brown
Marble Brown
Medium Brown
Light Chocolate

BLONDS:
Harvest Gold
Vanilla Lush
Spring Honey
Gold Blond
Creamy Blond

REDS:
Chestnut
Dark Rust



MASON 1632

Mixed layers with beveled ends gives this style attitude and a sophisticated "kick".

Color Shown:
Sandalwood-H

Cap: Machine-Made
Fringe: 2.4" (6cm)
Crown: 3" (7.5cm)
Nape: 1.6" (4cm)
Weight: 2.61oz (74g)

AVAILABLE COLORS:
BRUNETTES:
Chocolate Swirl
Ginger Brown
Marble Brown
Medium Brown

HYBRANT BRUNETTES:
Iced Mocha-R
Maple Sugar-R

BLONDS:
Harvest Gold
Frosti Blond
Strawberry Swirl
Vanilla Lush
Caramel Cream
Spring Honey
Creamy Blond

HYBRANT BLONDS:
Mochaccino-R
Nutmeg-F
Creamy Toffee-R
Sandalwood-H
Champagne-R

REDS:
Burgundy Rosa
Chestnut

HYBRANT REDS:
Almond Spice-R
Raspberry Ice-R
Copper Glaze-R

GRAYS:
Silver Stone™

MAY 1673

Elegantly relaxed bob has a wispy perimeter and feathery-swept sides.

Color Shown:
Mochaccino-R

Cap: Machine-Made
Fringe: 7" (18cm)
Crown: 9" (23cm)
Nape: 3.9" (10cm)
Weight: 3.63oz (103g)

AVAILABLE COLORS:
BRUNETTES:
Dark Chocolate
Java Frost
Marble Brown

HYBRANT BRUNETTES:
Coffee Latte-R
Chocolate Frost-R
Almond Rocka-R
Iced Mocha-R
Maple Sugar-R

HYBRANT BLONDS:
Mochaccino-R
Nutmeg-R
Sugar Cane-R
Creamy Toffee-R
Champagne-R

BLONDS:
Spring Honey
Creamy Blond

REDS:
Garnet Glaze

HYBRANT REDS:
Cayenne Spice-R
Raspberry Ice-R
Garnet Glaze

MEADOW 1719

This short layered bob has a well-balanced fringe, which gives it natural movement.

Color Shown:
Rose Gold-R

Cap: Light Machine-Made
Weight: 2.6oz (78g)
Fringe: 3.9" (10cm)
Crown: 5.9" (15cm)
Nape: 2.4" (6cm)

AVAILABLE COLORS:
BRUNETTES:
Cappuccino
Coffee Latte
Ginger Brown
Medium Brown

HYBRANT BRUNETTES:
Marble Brown-R
Chocolate Frost-R
Honey Brown-R
Iced Mocha-R

LR BRUNETTES:
Kandy Brown-LR

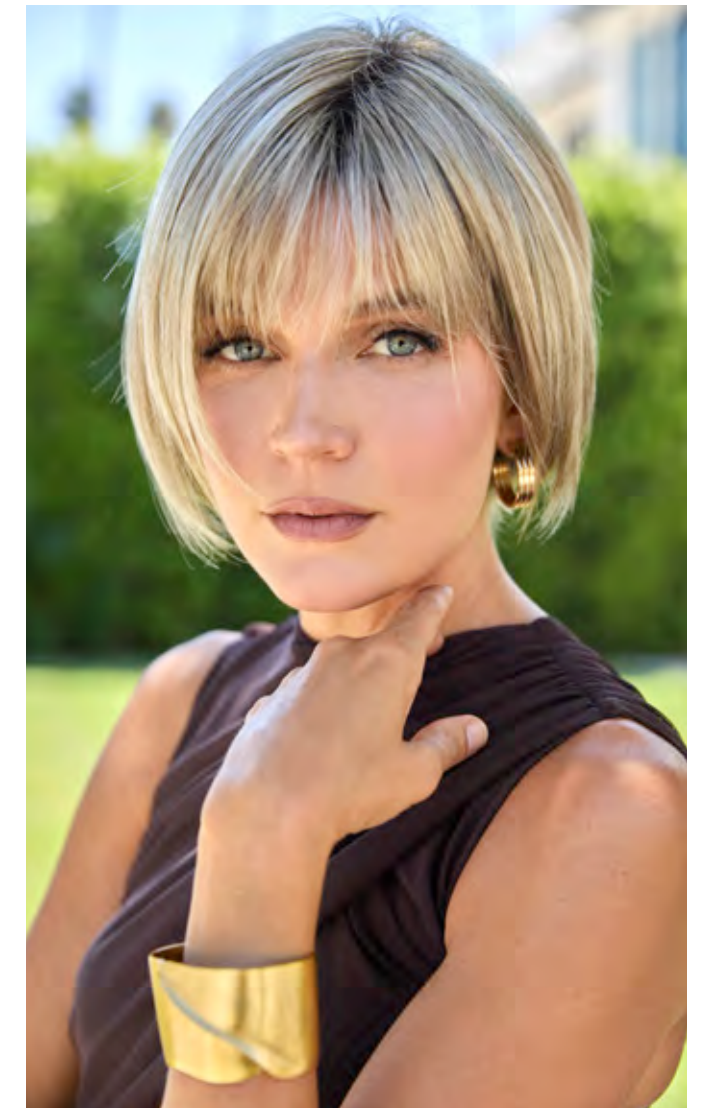
BLONDS:
Creamy Blond

HYBRANT BLONDS:
Champagne-R
Creamy Toffee-R
Mochaccino-R
Spring Honey-R
Sugar Cane-R
Rose Gold-R
Seashell Blond-R
Desert Sand-R

REDS:
Chestnut

GRAYS:
Silver Stone™
Simply White

HYBRANT GRAYS:
Moonstone
Silver Stone-R



MEGAN 1607

This semi-wedge bob tapers in the back.

Color Shown:
Toasted Brown

Cap: Machine-Made
Fringe: 4.5" (11.5cm)
Crown: 4.9" (12.5cm)
Nape: 2.2" (5.5cm)
Weight: 2.68oz (76g)

AVAILABLE COLORS:
BRUNETTES:
Dark Chocolate
Ginger Brown
Marble Brown
Toasted Brown
Medium Brown

BLONDS:
Harvest Gold
Sunny Blond
Frosti Blond
Strawberry Swirl
Vanilla Lush
Caramel Cream
Spring Honey
Creamy Blond

REDS:
Chestnut

GRAYS:
Sandy Silver™
Silver Stone™



MILLIE 1655

A classic style with a modern twist. The exaggerated, wispy neckline and point-specific layers are designed to highlight the cheekbones and open up the face.

Color Shown:
Midnite Pearl

Cap: Machine-Made
Fringe: 3.7" (9.5cm)
Crown: 4.7" (12cm)
Nape: 4.7" (12cm)
Weight: 2.5oz (71g)

AVAILABLE COLORS:
BRUNETTES:
Cappucino
Chocolate Swirl
Ginger Brown
Marble Brown
Toasted Brown

HYBRANT BRUNETTES:
Iced Mocha-R
Maple Sugar-R

HYBRANT BLONDS:
Mochaccino-R
Nutmeg-F
Creamy Toffee-R
Champagne-R

REDS:
Chestnut

HYBRANT REDS:
Almond Spice-R
Auburn Sugar-R
Razberry Ice-R

GRAYS:
Midnite Pearl
Silver Stone™



NORI 1682

A short and shaggy style with razored, textured fringe and nape.

Color Shown:
Sugar Cane-R

Cap: Machine-Made
Fringe: 3.5" (9cm)
Crown: 4.7" (12cm)
Nape: 3.1" (8cm)
Weight: 2.6oz (73g)

AVAILABLE COLORS:
BRUNETTES:
Chocolate Swirl
Ginger Brown
Marble Brown

HYBRANT BRUNETTES:
Coffee Latte-R
Chocolate Frost-R
Almond Rocka-R
Iced Mocha-R
Maple Sugar-R

BLONDS:
Spring Honey

HYBRANT BLONDS:
Mochaccino-R
Nutmeg-R
Sugar Cane-R
Creamy Toffee-R
Champagne-R

REDS:
Chestnut

HYBRANT REDS:
Razberry Ice-R
Copper Glaze-R

GRAYS:
Silver Stone™

NOUR 1724

Discover the perfect fusion of boldness and elegance with this chic pixy wig. Crafted with meticulous attention to detail, the feathered bangs frame your face gracefully, adding a touch of softness to your features.

Color Shown:
Chocolate Swirl

Cap: Feather Light Machine-Made,
Extended Nape
Weight: 2.1oz (60g)
Fringe: 4.3" (11cm)
Crown: 4.3" (11cm)
Nape: 2.4" (6cm)

AVAILABLE COLORS:
BRUNETTES:
Brown Sable
Chocolate Swirl
Coffee Latte
Dark Chocolate
Ice Mocha
Marble Brown

BLONDS:
Creamy Blond
Creamy Toffee
Frosti Blond
Harvest Gold
Sugar Cane

HYBRANT BLONDS:
Nutmeg-F
Rose Gold-R

GRAYS:
60
Icy Caviar
Sandy Silver
Silver Mink
Silver Stone

HYBRANT GRAYS:
Lilac Silver-R



REESE 1660

This sassy bob has tousled layers and an edgy fringe.

Color Shown:
Creamy Toast

Cap: Machine-Made
Fringe: 5" (12.5cm)
Crown: 5.9" (15cm)
Nape: 3.9" (10cm)
Weight: 2.89oz (82g)

AVAILABLE COLORS:
BRUNETTES:
Espresso
Cappuccino
Dark Chocolate
Chocolate Swirl
Ginger Brown
Marble Brown
Toasted Brown

HYBRANT BRUNETTES:
Chocolate Frost-R
Iced Mocha-R
Maple Sugar-R

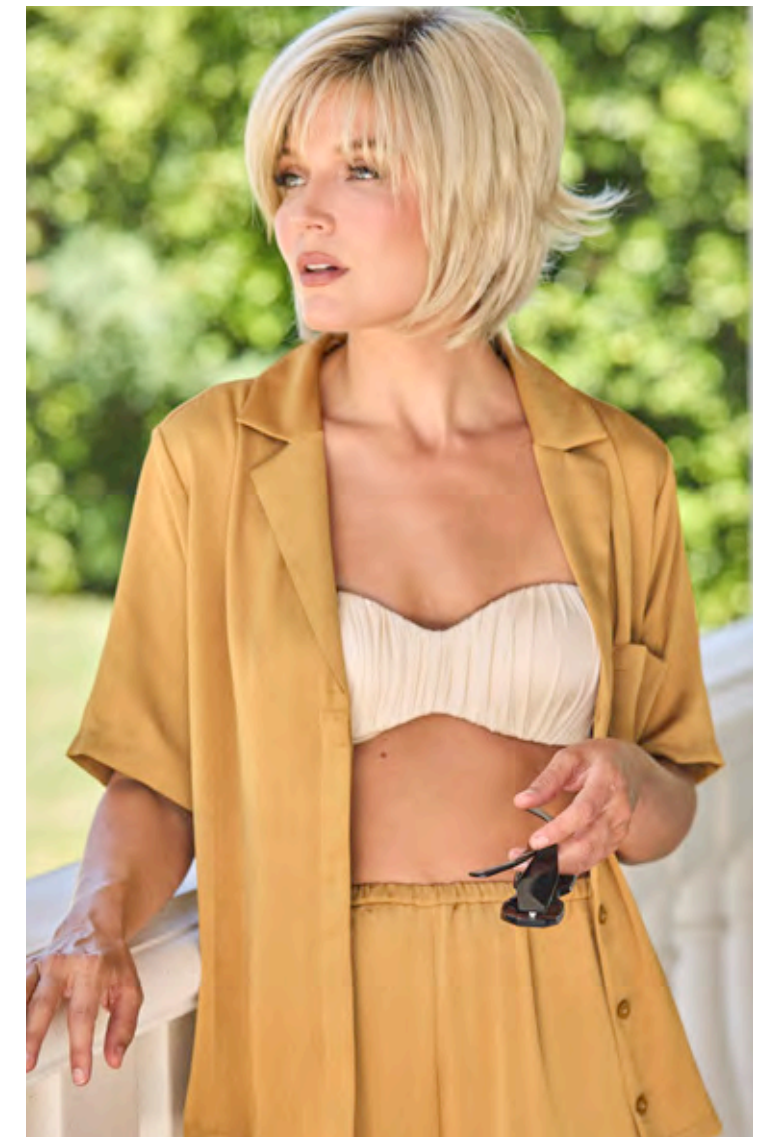
BLONDS:
Harvest Gold
Strawberry Swirl
Vanilla Lush
Spring Honey
Creamy Blond

HYBRANT BLONDS:
Butter Pecan-R
Mocha-H
Mochaccino-R
Nutmeg-F
Creamy Toast
Creamy Toffee-R
Sandalwood-H
Champagne-R

REDS:
Red Pepper
Ginger Highlight
Chestnut

HYBRANT REDS:
Raisin Glaze-H
Almond Spice-R
Auburn Sugar-R
Razberry Ice-R
Irish Spice-R
Copper Glaze-R

GRAYS:
Sandy Silver™
Silver Stone™



PAM 1606

A basic short cut with feathered layers.

Color Shown:
Marble Brown

Cap: Machine-Made
Fringe: 2.4" (6cm)
Crown: 3.1" (8cm)
Nape: 1.6" (4cm)
Weight: 2.1oz (59g)

AVAILABLE COLORS:
BRUNETTES:
Dark Chocolate
Ginger Brown
Marble Brown
Medium Brown
Golden Brown
Light Chocolate

BLONDS:
Harvest Gold
Frosti Blond
Strawberry Swirl
Spring Honey
Gold Blond
Creamy Blond

REDS:
Chestnut

GRAYS:
Silver Stone™
38
51
56



ROBIN 1639

Stunning! The graduated, interior layers create a soft silhouette with maximum movement.

Color Shown:
Burgundy Rosa

Cap: Machine-Made
Fringe: 4.3" (11cm)
Crown: 17.5" (44.5cm)
Nape: 17.3" (44cm)
Overall: 25" (63.5cm)
Weight: 5.11oz (145g)

AVAILABLE COLORS:
BRUNETTES:
Espresso
Cappuccino
Dark Chocolate
Chocolate Swirl
Ginger Brown
Marble Brown
Toasted Brown
Light Chocolate
Pecan Brown

BLONDS:
Harvest Gold
Vanilla Lush
Caramel Cream
Spring Honey
Creamy Blond

HYBRANT BLONDS:
Nutmeg-F
Sandalwood-H
Champagne-R

REDS:
Burgundy Rosa
Chestnut

HYBRANT REDS:
Almond Spice-R



RONI 1641

Maximized volume! This bold, multi-layered style is full of texture and hugs the nape with tapered edges.

Color Shown: Harvest Gold

Cap: Machine-Made
Fringe: 4.5" (11.5cm)
Crown: 4.3" (11cm)
Nape: 2" (5cm)
Weight: 2.36oz (67g)

AVAILABLE COLORS:
BRUNETTES:
Marble Brown
Ginger Brown

BLONDS:
Harvest Gold
Frosti Blond
Strawberry Swirl
Vanilla Lush
Caramel Cream
Spring Honey

REDS:
Burgundy Rosa
Paprika-R
Chestnut



SALLY 1616

Short layers and a soft fringe frame the face while a tapered back hugs the nape.

Color Shown:
Frosti Blond

Cap: Machine-Made
Fringe: 3.9" (10cm)
Crown: 4.9" (12.5cm)
Nape: 2.4" (6cm)
Weight: 2.7oz (77g)

AVAILABLE COLORS:
BRUNETTES:
Cappuccino
Dark Chocolate
Ginger Brown
Marble Brown
Toasted Brown
Medium Brown
Light Chocolate

BLONDS:
Frosti Blond
Strawberry Swirl
Vanilla Lush
Spring Honey
Gold Blond
Creamy Blond

REDS:
Chestnut

GRAYS:
Silver Stone™

SANDIE 1648

This textured bob has a tousled finish.

Color Shown:
Iced Mocha-R

Cap: Machine-Made
Fringe: 5.1" (13cm)
Crown: 6.3" (16cm)
Nape: 3.5" (9cm)
Weight: 2.75oz (78g)

AVAILABLE COLORS:
BRUNETTES:
Dark Chocolate
Ginger Brown
Marble Brown
Toasted Brown
Pecan Brown

HYBRANT BRUNETTES:
Iced Mocha-R
Maple Sugar-R

BLONDS:
Harvest Gold
Strawberry Swirl
Spring Honey
Creamy Blond

HYBRANT BLONDS:
Mochaccino-R
Nutmeg-F
Creamy Toffee-R
Sandalwood-H
Champagne-R

REDS:
Ginger Highlight
Chestnut

HYBRANT REDS:
Auburn Sugar-R

GRAYS:
Midnite Pearl
Silver Stone™



Color Shown:
Banana Split-LR

Cap: Machine-Made
Fringe: 5.1" (13cm)
Crown: 10.6" (27cm)
Nape: 9.8" (25cm)
Weight: 5.43oz (154g)

AVAILABLE COLORS:
BRUNETTES:
Dark Chocolate
Chocolate Swirl
Ginger Brown
Marble Brown

HYBRANT BRUNETTES:
Coffee Latte-R
Almond Rocka-R
Iced Mocha-R
Maple Sugar-R

BLONDS:
Spring Honey
Creamy Blond

HYBRANT BLONDS:
Butter Pecan-R
Mochaccino-R
Nutmeg-R
Creamy Toffee-R

LR BLONDS:
Banana Split-LR
Macadamia-LR

HYBRANT REDS:
Irish Spice-R
Copper Glaze-R

LR REDS:
Crimson-LR



SEVILLE 1685

Classic, medium-length style features a subtle a-line perimeter and square layers.



SKY 1649

A wispy voluminous bob with soft, feathery layers.

Color Shown:
Almond Rocka-R

Cap: Machine-Made
Fringe: 5.5" (14cm)
Crown: 5.1" (13cm)
Nape: 3.5" (9cm)
Weight: 2.79oz (79g)

AVAILABLE COLORS:
BRUNETTES:
Espresso
Cappuccino
Dark Chocolate
Chocolate Swirl
Ginger Brown
Marble Brown
Toasted Brown
Medium Brown
Pecan Brown

HYBRANT BRUNETTES:
Coffee Latte-R
Almond Rocka-R
Iced Mocha-R
Maple Sugar-R

BLONDS:
Harvest Gold
Frosti Blond
Strawberry Swirl
Vanilla Lush
Caramel Cream
Spring Honey
Gold Blond
Creamy Blond

HYBRANT BLONDS:
Butter Pecan-R
Mocha-H
Mochaccino-R
Honey Wheat-R
Nutmeg-F
Sugar Cane-R
Creamy Toffee-R
Sandalwood-H
Champagne-R

REDS:
Burgundy Rosa
Red Pepper
Ginger Highlight
Bronzed Brown
Chestnut
Dark Rust

HYBRANT REDS:
Raisin Glaze-H
Terracotta-H
Almond Spice-R
Auburn Sugar-R
Razberry Ice-R
Copper Glaze-R

GRAYS:
Midnite Pearl
Sandy Silver™
Silver Stone™



STORM 1722

Side-swept fringe, layered cut. Easily arrange styling and add more fullness for a fun new look.

Colors Shown:
Seashell Blond-R

Cap: Feather Light Machine-Made
Fringe: 3.9" (10cm)
Crown: 5.1" (13cm)
Nape: 5.9" (15cm)
Weight: 2.9-3.1oz (82-88g)

AVAILABLE COLORS:
BRUNETTES
Brown Sable
Coffee Latte
Dark Chocolate
Ginger Brown

HYBRANT BRUNETTES
Chocolate Frost-R
Iced Mocha-R
Marble Brown-R

BLONDS
Creamy Blond
Frosti Blond
Spring Honey-T
Sugar Cane

HYBRANT BLONDS
Creamy Toffee-R
Mochaccino-R
Nutmeg-F
Rose Gold-R
Desert Sand-R
Champagne-R
Seashell Blond-R

REDS
Chestnut

HYBRANT REDS
Auburn Sugar-R

MELTED BLENDS
Melted Marshmallow

GRAY
Champagne Silver
Sandy Silver™
Silver Stone™

HYBRANT GRAY
Silver Stone-R



ZEAL 1725

Elevate your style game with this medium-length bob that strikes the perfect balance between classic elegance and contemporary flair.

Color Shown: Coffee Latte-R

Cap: Feather Light Machine-Made,
Extended Nape
Weight: 2.8oz (80g)
Fringe: 4.3" (11cm)
Crown: 5.9" (15cm)
Nape: 2.4" (6cm)

AVAILABLE COLORS:
BRUNETTES
Brown Sable
Dark Chocolate

HYBRANT BRUNETTES
Chocolate Frost-R
Coffee Latte-R
Iced Mocha-R
Marble Brown-R

HYBRANT BLONDS
Champagne-R
Milky Opal-R
Mochaccino-R
Rose Gold-R
Sugar Cane-R
Creamy Toffee-R

HYBRANT REDS
Copper Glaze-R

GRAYS
Icy Caviar
Sandy Silver

HYBRANT GRAYS
Lilac Silver-R
Silver Stone-R

HYBRANT PASTELS
Bubblegum-R

MELTED BLENDS
Melted Cinnamon
Melted Marshmallow

MALIBU 1716

Stunning, long-layered hair enhancement with side swept fringe. Naturally tapered ends are sure to blend in well.

Color Shown:
Coffee Latte

Cap: Monofilament Cap
Fringe: 5.9" (15cm)
Crown: 9.4" (24cm)
Weight: 3.2 - 3.4oz (90-95g)

AVAILABLE COLORS:

BRUNETTES:

Espresso
Cappuccino
Dark Chocolate
Ginger Brown

HYBRANT BRUNETTES:

Marble Brown-R

BLONDS:

Creamy Blond
Spring Honey

HYBRANT BLONDS:

Coffee Latte
Champagne-R
Creamy Toffee-R
Mochaccino-R
Nutmeg-F
Sugar Cane-R

REDS:

Chestnut

LR BRUNETTES:

Kandy Brown-LR

MELTED:

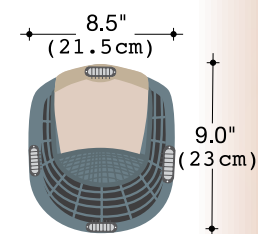
Melted Marshmallow

GRAYS:

Silver Stone™
Simply White

HYBRANT GRAYS:

Moonstone



MILAN 1658

An innovative hair enhancement that adds length and smooth face framing layers.

Color Shown:
Creamy Toffee

Base: Monofilament Top
Fringe: 8.5" (21.5cm)
Crown: 14" (35.5cm)
Nape: 13.5" (34.3cm)
Weight: 4oz (115g)

AVAILABLE COLORS:

BRUNETTES:
Espresso
Cappuccino
Dark Chocolate
Chocolate Swirl
Ginger Brown
Marble Brown
Toasted Brown

BLONDS:

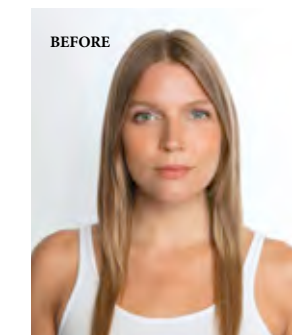
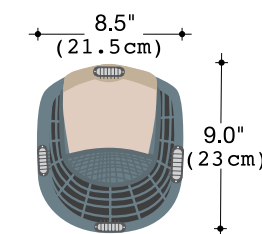
Spring Honey
Creamy Blond
Creamy Toffee

HYBRANT BLONDS:

Nutmeg-F
Creamy Toast
Champagne-R

REDS:
Chestnut

HYBRANT REDS:
Almond Spice-R



DISPLAY
MANNEQUINS8123
21" MANNEQUIN8119
17" MANNEQUIN8128
18" WHITE
MANNEQUIN
NO LOGO8129
18" GRAY
MANNEQUIN
WITH LOGO8130
18" BLACK
MANNEQUIN
WITH LOGO8131
18" WHITE
MANNEQUIN
WITH LOGO

9582
WIG STAND
PACKAGE
(3pc package
contains colors:
Black, Blue & Gray)

Sold separately:
9583
BLACK
BLUE
GRAY



Convenient "snap together" stand for wig storage or service.

9511
SWATCHES

The color swatches
let you see your
perfect hair match.

NORIKO™

9580
WIG CAP

Available Colors:
Beige, Black, and Brown

9581 WIG LINER
OPEN MESH

Available Colors:
Beige, Black, and Brown

9593 2-SIDED
VELVET GRIP
Available Colors:
Beige, Brown9592
VELVET GRIP
with SHORT LACE
Available Colors:
Brown, Beige8113 MANNEQUIN
HOOK9586
BULK BEIGE
WIG CAP
(Sold in 12 pcs)9584
ROP WIG STAND9585
SILVER COMB CLIP
(Sold in 12 pcs)9587
ROP WIG LIFT COMB965
WIRE BRUSH9591
ROP FOLDING BRUSH9561
FLAT IRONRENÉ OF PARIS
MAINTENANCE TOOLS

RENE OF PARIS PREPARE SHAMPOO

This luxurious shampoo is formulated with the ultimate in moisture replenishing cleansers. The René of Paris™ Prepare Shampoo helps maintain the smoothness, strength and polish of your hair.

The gentle combination of plant and vegetable extracts, along with natural essential oils and vitamins, provides a gentle but thorough cleansing of your hair. The results will revolutionize how you feel in your hair.

RENE OF PARIS REVIVE LIQUID
ENHANCEMENT

The finest advanced liquid developed for synthetic fiber hair. The René of Paris™ Revive Liquid Enhancement will revive your hair and give it the brand new feel.

Not only helps eliminate frizz while adding luster, texture and volume, but also protects your hair from the daily stresses.

RENE OF PARIS PROTECT HOLDING SPRAY

The final stop in maintaining and styling your hair. This holding spray adds shine while gently, yet firmly, holding your desired style.

ROP
SHAMPOO
9950 | 8 oz.
9954 | 2 oz.ROP LIGHT
CONDITIONER
9953 | 8 oz.
9955 | 2 oz.ROP REVIVE
LIQUID
ENHANCEMENT
9951 | 8 oz.ROP PROTECT
HOLDING SPRAY
9952 | 8 oz.
9956 | 2 oz.

We are delighted that you have chosen to become one of our valued customers. We appreciate your business as well as any inquiries regarding the following:

APPLICABILITY:

1. The following terms and conditions ("Terms") are the only terms which govern the sale of the goods ("Goods") by Aderans Hair Goods, Inc. ("AHG") to its customers (each referred to hereafter as "Buyer," or "You"). Notwithstanding anything herein to the contrary, if a written contract signed by both parties is in existence covering the sale of the Goods covered hereby, the terms and conditions of said contract shall prevail to the extent they are inconsistent with these Terms.

2. These Terms, together with the applicable invoice and the Statement of Policy defined below (collectively, this "Agreement"), comprise the entire agreement between the parties, and supersede all prior or contemporaneous understandings, agreements, negotiations, representations and warranties, and communications, both written and oral. These Terms prevail over any of Buyer's general terms and conditions of purchase regardless whether or when Buyer has submitted its purchase order or such terms. Acceptance of Buyer's purchase order or fulfillment of Buyer's order does not constitute acceptance of any of Buyer's terms and conditions and does not serve to modify or amend these Terms.

ACCEPTANCE OF PURCHASE ORDER. AHG has the right, in its sole discretion, to accept or reject any purchase order issued by You. AHG may accept any purchase order by confirming the order (whether by written confirmation, invoice or otherwise) or by delivering the Goods, whichever occurs first. No purchase order is binding on AHG unless accepted by AHG.

PRICES. You shall purchase the Goods from AHG at the prices set forth in AHG's price list in effect at the time that AHG accepts Your purchase order ("Prices"). Prices are exclusive of, and You are solely responsible for, and shall pay, any and all taxes, with respect to, or measured by, the manufacture, sale, shipment, use or Price of the Goods; provided, however, that You shall not be responsible for any taxes imposed on, or with respect to, AHG's income, revenues, gross receipts, personnel or real or personal property or other assets.

PAYMENT TERMS: AHG accepts payment by Visa, MasterCard, AMEX, Discover, money order, wire transfer and COD. Upon approval, credit terms may be available.

CREDIT PURCHASES: If You wish to apply for an AHG 30-day open account (NET -30), contact Your AHG sales representative and request a credit application.

SHIPPING/HANDLING: You will pay for all shipping charges and insurance costs. AHG offers shipping via UPS next day air, 2-3 day air, and ground. There is a handling charge of \$1.00 for all orders. For each purchase order accepted by AHG, AHG may, in its sole discretion, without liability or penalty, make partial shipments of Goods to You. Each shipment will constitute a separate sale and You will pay for the units shipped whether such shipment is in whole or partial fulfillment of a purchase order.

TRANSFER OF TITLE & RISK OF LOSS: Title passes to You upon delivery of the Goods to the

address You specified in the purchase order. Risk of loss or damage to the Goods passes to You upon AHG's tender of such units to the carrier at AHG's location in Chatsworth, CA.

STATEMENT OF POLICY: You must comply with the Statement of Policy and Guidelines for Using Aderans' Trademarks and Copyrights (the "Statement of Policy") which was provided to You and which may be modified or updated by AHG from time to time in its sole discretion.

RETURN POLICY: Returns will not be accepted unless pre-authorized by (AHG). Requests must be made within 30 days from receipt of goods. Upon approval and receipt of the authorization for return label, Goods meeting the following conditions may be returned for an exchange or direct credit to Your account (freight prepaid by Buyer). NO cash refunds! If an item is to be exchanged, new shipping and handling charges will be added.

1. A copy of Your invoice must accompany all returns. The authorization for return label must be placed on the outside of the box (complete with the authorization number) and Your return address. If not, the box will be refused.

2. Returned Goods must be in MINT CONDITION. Mint condition is defined by AHG as: no missing tags or labels, the hair net is not removed, item(s) are not combed/fluffed or tried on by a customer. All returns must be in original shipping box. There is a restocking fee of \$10.00 for EACH piece returned.

3. AHG has carefully designed its product packaging to protect the product integrity. AHG is not responsible for damage to or problems with any product where the product and/or shipment packaging has been changed per Your request. No returns will be accepted under these conditions.

4. Shipping and handling fees are non-refundable.

5. Any DISCONTINUED items are not returnable.

6. AHG is not responsible for lost return packages.

It is recommended that You keep proper Proof-of-Delivery. Goods not meeting the above stipulations will be refused. AHG will not accept returns more than 30 days after receipt of Goods. If there is a factory defect or an incorrectly shipped item due to our error, a full exchange or credit will be applied directly to Your account. Note: If an item is returned for a "defective" credit and upon examination found not to be defective, credit will only be given for the item's original price (providing it still meets the above standards), and a \$10.00 restocking charge will be applied. Any additional product not authorized for return will be sent back.

NOTE: Colors shown in this catalog may not reflect actual color of product.

RENÉ OF PARIS, NORIKO, and NORIKO COLLECTION are trademarks or registered trademarks of Aderans Hair Goods, Inc. and/or Aderans Co., Ltd. in the United States and other countries.



Distributed by

RENÉ of PARIS

A division of Aderans Hair Goods, Inc.

www.reneofparis.com | 9135 Independence Ave. | Chatsworth, CA 91311 USA

Toll Free: 800.353.7363 | Fax: 424.239.1451

Front Cover Style Shown: Wynn in Frosted Mushroom-R

FOLLOW US ON:

